



**EDWARD EICHE**  
**ARCHITECT**  
 10011 TUPPENCE TRACE  
 LOUISVILLE KENTUCKY 40223  
 (502) 797-1441

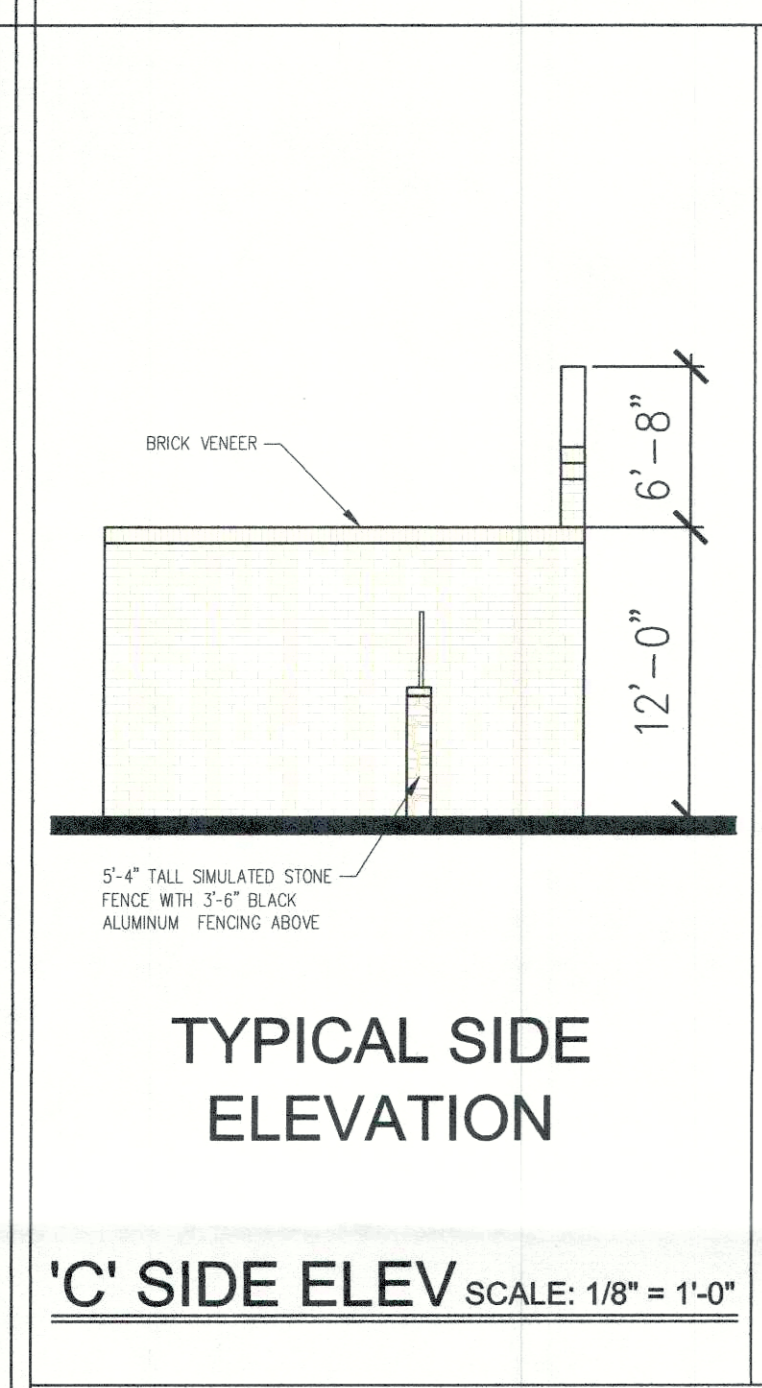
**THIRD STREET ROAD VENTURES, LLC**  
 OWNER-DEVELOPER  
 P.O. BOX 5895  
 LOUISVILLE, KENTUCKY 40255

**THIRD STREET ROAD MINI-STORAGE**  
 NEW SELF STORAGE COMPLEX PROJECT  
 8701-8713 SOUTH THIRD STREET  
 LOUISVILLE, KENTUCKY 40272



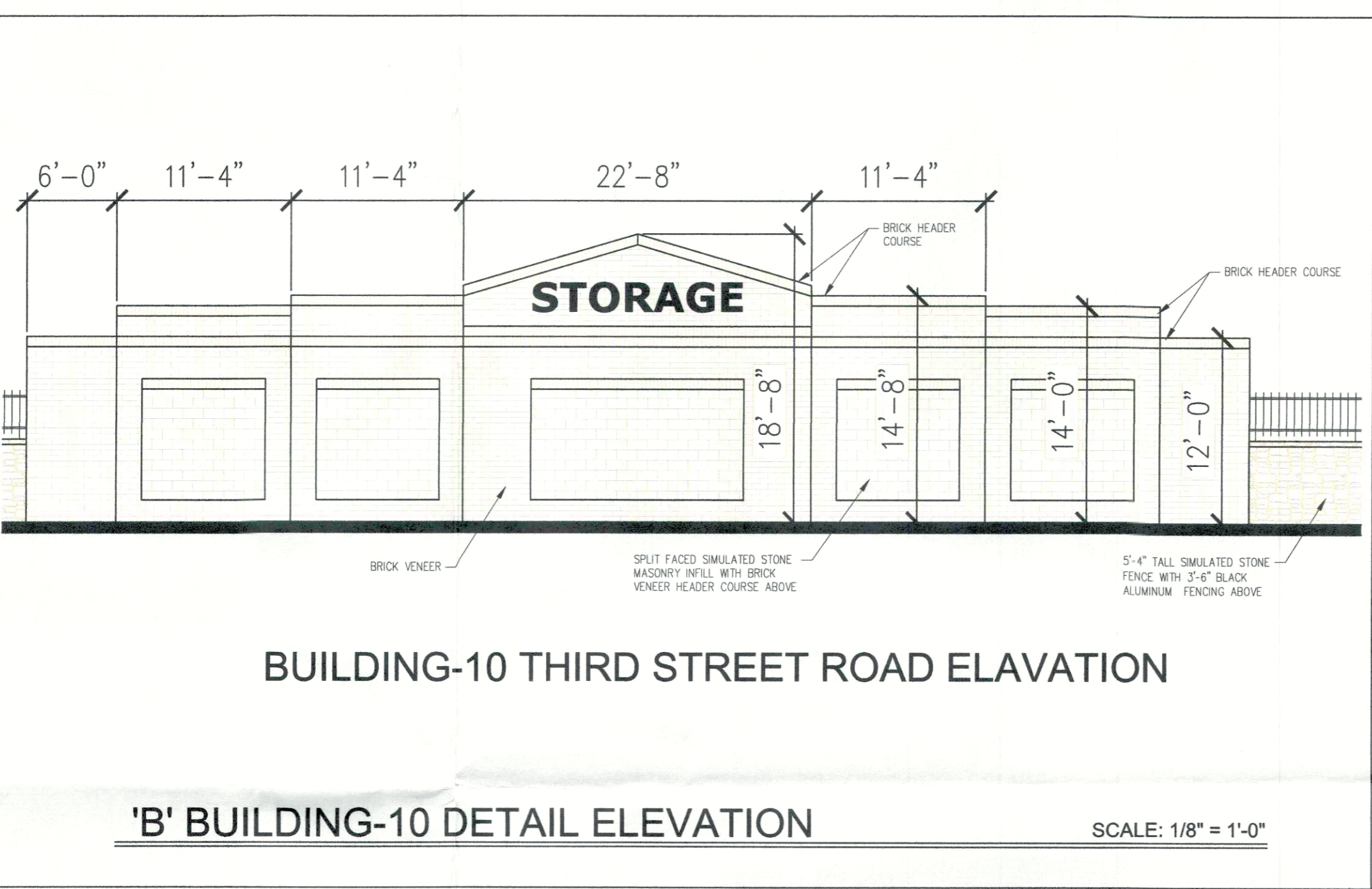
**D - BUILDING-10 THIRD STREET ROAD COLOR ELEVATION**

SCALE: 1/4" = 1'-0"



**TYPICAL SIDE ELEVATION**

**'C' SIDE ELEV SCALE: 1/8" = 1'-0"**



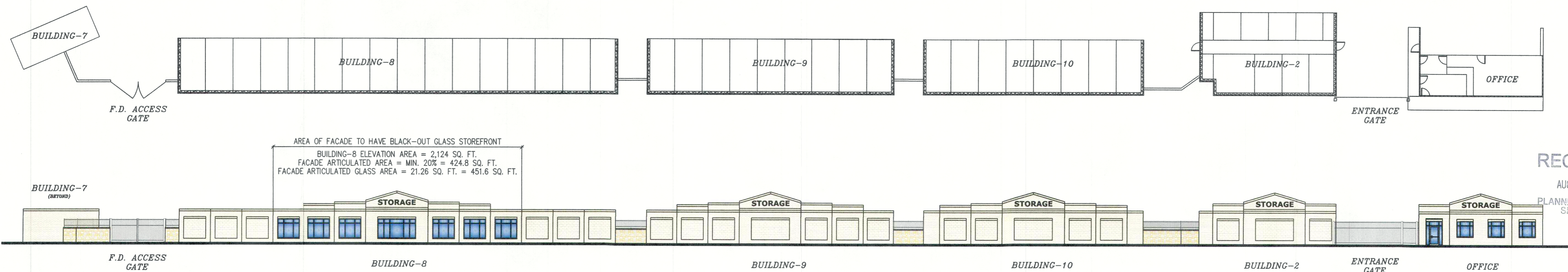
**BUILDING-10 THIRD STREET ROAD ELAVATION**

**'B' BUILDING-10 DETAIL ELEVATION SCALE: 1/8" = 1'-0"**



**BUILDING-2 & OFFICE THIRD STREET ROAD ELAVATION**

**C - BUILDING-02 & OFFICE DETAIL ELEVATION SCALE: 1/8" = 1'-0"**



**A - THIRD STREET ROAD OVERALL PLAN & ELEVATIONS**

SCALE: 1" = 20'-0"

AREA OF FACADE TO HAVE BLACK-OUT GLASS STOREFRONT  
 BUILDING-8 ELEVATION AREA = 2,124 SQ. FT.  
 FACADE ARTICULATED AREA = MIN. 20% = 424.8 SQ. FT.  
 FACADE ARTICULATED GLASS AREA = 21.26 SQ. FT. = 451.6 SQ. FT.

**RECEIVED**  
 AUG 02 2021  
 PLANNING & DESIGN SERVICES

DRAWN BY	EKE
REVIEW BY	EKE
DATE	REV 7/23/21
SHEET INDEX	PRELIMINARY
THIRD ST. ROAD	EXTERIOR
ELEVATIONS	REVISIONS

**A2.01**  
 SHEET NUMBER

21-CUP-0123