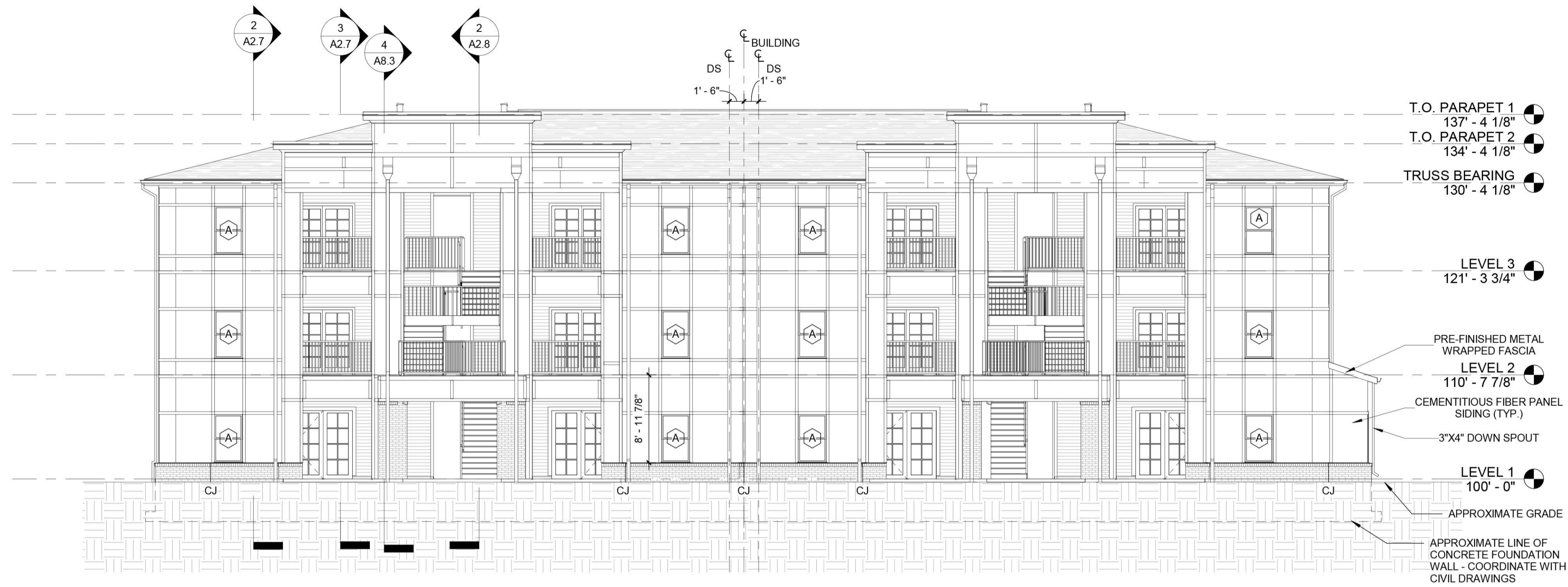
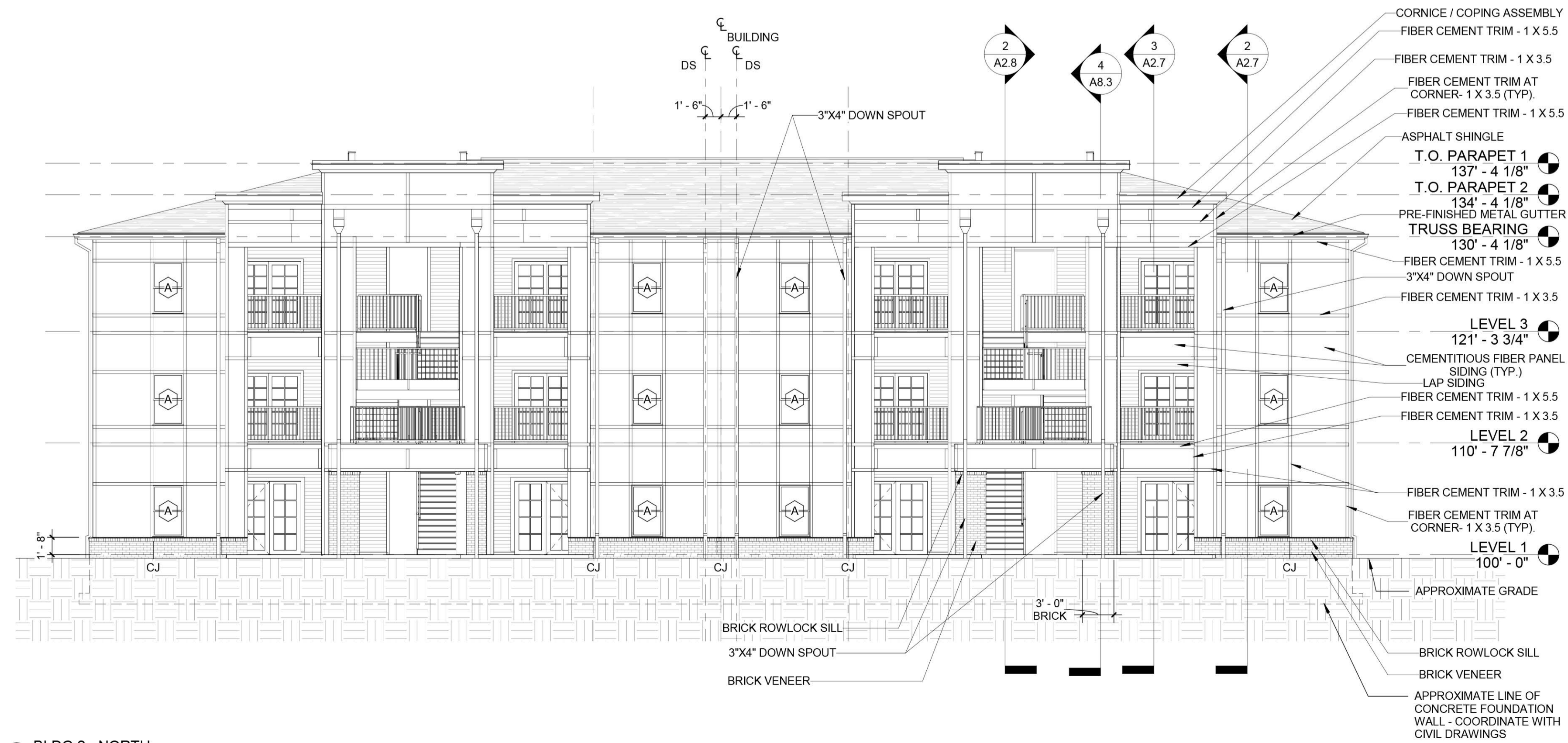


**GENERAL ELEVATION NOTES:**

1. COORDINATE FINAL FINISH FLOOR ELEVATIONS OF EACH BUILDING, OR PORTION THEREOF, WITH THE FFE AND WALKOUT INDICATIONS IN THE OWNER'S CIVIL DRAWINGS.
2. BOTTOM OF FOUNDATIONS ARE RELATIVE TO FINAL FINISH FLOOR ELEVATIONS AND FINAL GRADE ELEVATIONS FOR EACH BUILDING. COORDINATE WITH THE FFE AND WALKOUT INDICATIONS IN THE OWNER'S CIVIL DRAWINGS.
3. ALL LEVELS ABOVE LEVEL 1, INCLUDING BUT NOT LIMITED TO: LEVEL 2, LEVEL 3, AND TRUSS BEARING, SHALL REMAIN RELATIVE TO LEVEL 1 OF EACH BUILDING (FFE IN CIVIL DRAWINGS).
4. COORDINATE FINAL LOCATION OF RISER ROOM WITH OWNER / CIVIL ENGINEERS.
5. FINISH GRADE SHALL SLOPE AWAY FROM BUILDING AND BE BELOW THE FINISH FLOOR ELEVATION - UNLESS NOTED OTHERWISE. REFER TO SECTIONS DETAILS FOR MINIMUM DIMENSION. COORDINATE WITH CIVIL DRAWINGS FOR FINISH GRADE AT BUILDING FACE.
6. EXTERIOR SIDING SYSTEM AND TRIM SHALL BE FIBER CEMENT BOARD SYSTEM - UNLESS NOTED OTHERWISE. REFER TO ELEVATIONS FOR SPECIFIC APPLICATIONS AND EXTENTS.
7. 1 X 3.5 FIBER CEMENT SYSTEM TRIM ALIGNED WITH HEAD, SILL, AND JAMBS OF WINDOW OPENINGS AND CONTINUOUS TOP ALIGNED WITH FLOOR LEVEL - U.N.O.



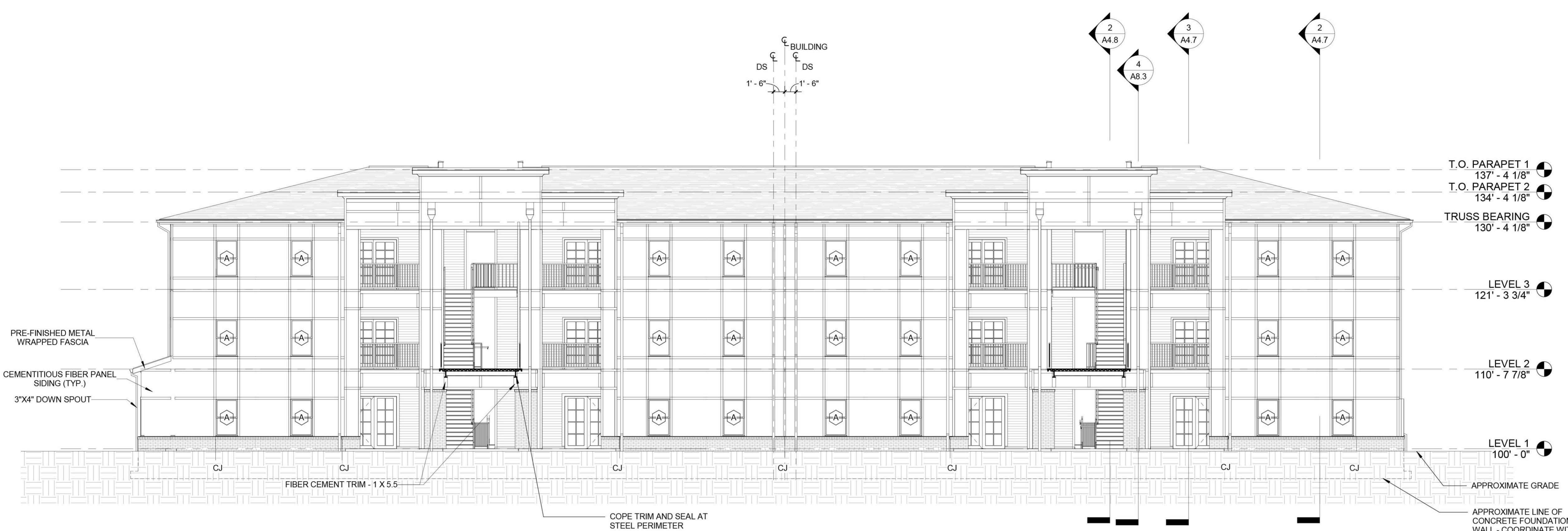
② BLDG 2 - SOUTH  
1/8" = 1'-0"



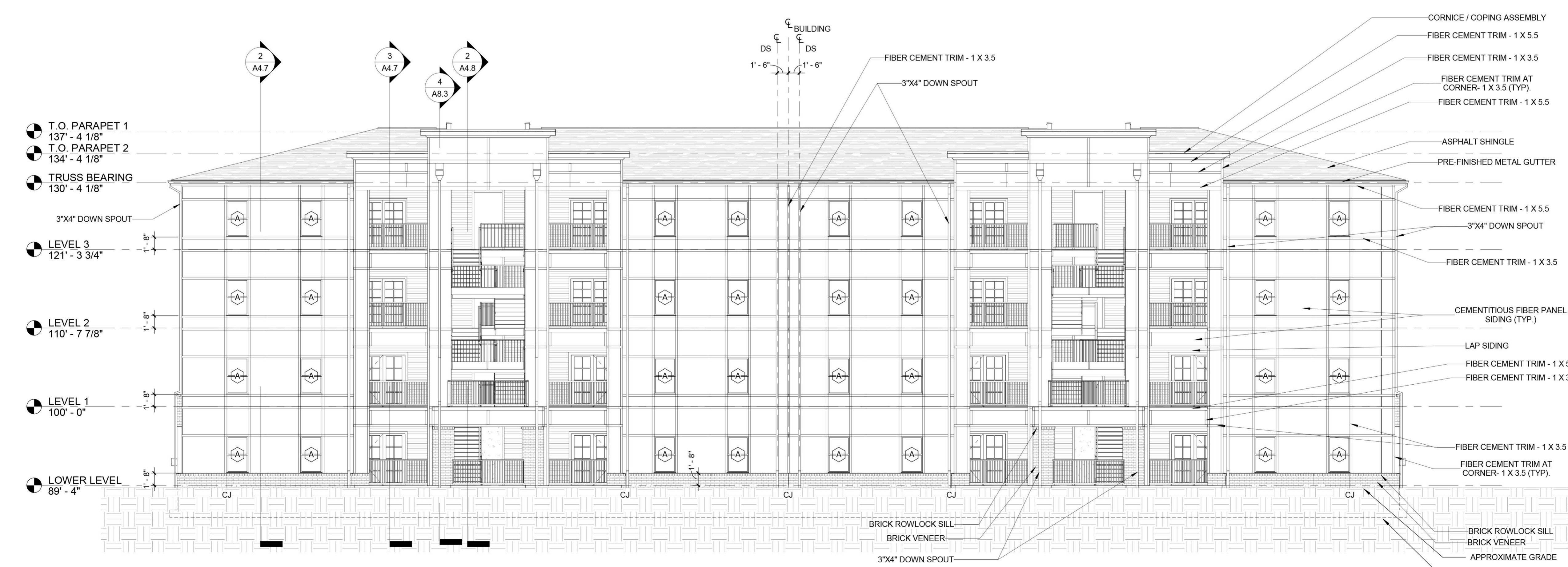
① BLDG 2 - NORTH  
1/8" = 1'-0"

**GENERAL ELEVATION NOTES:**

1. COORDINATE FINAL FINISH FLOOR ELEVATIONS OF EACH BUILDING, OR PORTION THEREOF, WITH THE FFE AND WALKOUT INDICATIONS IN THE OWNER'S CIVIL DRAWINGS.
2. BOTTOM OF FOUNDATIONS ARE RELATIVE TO FINAL FINISH FLOOR ELEVATIONS AND FINAL GRADE ELEVATIONS FOR EACH BUILDING. COORDINATE WITH THE FFE AND WALKOUT INDICATIONS IN THE OWNER'S CIVIL DRAWINGS.
3. ALL LEVELS ABOVE LEVEL 1, INCLUDING BUT NOT LIMITED TO: LEVEL 2, LEVEL 3, AND TRUSS BEARING, SHALL REMAIN RELATIVE TO LEVEL 1 OF EACH BUILDING (FFE IN CIVIL DRAWINGS).
4. COORDINATE FINAL LOCATION OF RISER ROOM WITH OWNER / CIVIL ENGINEERS.
5. FINISH GRADE SHALL SLOPE AWAY FROM BUILDING AND BE BELOW THE FINISH FLOOR ELEVATION - UNLESS NOTED OTHERWISE. REFER TO SECTIONS DETAILS FOR MINIMUM DIMENSION. COORDINATE WITH CIVIL DRAWINGS FOR FINISH GRADE AT BUILDING FACE.
6. EXTERIOR SIDING SYSTEM AND TRIM SHALL BE FIBER CEMENT BOARD SYSTEM - UNLESS NOTED OTHERWISE. REFER TO ELEVATIONS FOR SPECIFIC APPLICATIONS AND EXTENTS.
7. 1 X 3.5 FIBER CEMENT SYSTEM TRIM ALIGNED WITH HEAD, SILL, AND JAMBS OF WINDOW OPENINGS AND CONTINUOUS TOP ALIGNED WITH FLOOR LEVEL - U.N.O.



② BLDG 4 - SOUTH  
1/8" = 1'-0"



① BLDG 4 - NORTH  
1/8" = 1'-0"