





PROJECT LOCATION

SITE PLAN // EXISTING

SITE PLAN // DEMO

SITE PLAN // PROPOSED

MASSING DIAGRAMS

PERSPECTIVES

3

4

5

6

7

8



DISCLAIMER

This presentation may contain forward-looking statements including, but not limited to, statements as to future operating results and plans that involve risks and uncertainties. The use of words such as "expects", "anticipates", "believes", "estimates", the negative of these terms and similar expressions identify forward-looking statements. Such forward-looking statements involve known and unknown risks, uncertainties and other factors which may cause the actual results, performance or achievements of CityVisions Associates, LLC, and all of it's subsidiaries or the specific project is described herein to differ materially from any future results, performance or achievements expressed or implied by those projected in the forward-looking statements for any reason.

This presentation does not constitute a prospectus or offer document of any sort and is not intended to constitute an offer of securities or a solicitation for investments in securities in any jurisdiction. No person is bound to enter into any contract or binding legal commitment, and no form of payment is to be accepted based on this presentation. Any agreement relating to the sale and purchase of securities issued by CityVisions or its affiliate is to be governed solely by any purchase documents as CityVisions or its affiliate may require and no other document (including this presentation).

This presentation and the information included herein is intended only for the use of the addressee(s) and contains information that is PRIVILEGED and CONFIDENTIAL. If you are not the intended recipient, you are hereby notified that any dissemination of this presentation is strictly prohibited. If you receive this presentation in error, please delete all copies and notify the sender immediately.

No regulatory authority has examined or approved of any of the information set out in this presentation. No such action has been or will be taken under the laws, regulatory requirements or rules of any jurisdiction. The publication, distribution or dissemination of this presentation does not imply that any such applicable laws, regulatory requirements or rules have been complied with. There are material risks and uncertainties associated with CityVisions, its business and operations and the project described herein. CityVisions and its affiliates do not make or purport to make, and hereby disclaim, any representation, warranty or undertaking in any form whatsoever to any entity or person, including any representation, warranty or undertaking as to the accuracy and completeness of any of the information set out in this presentation.

All trademarks, brand names and trade names are the sole and exclusive property of CityVisions Associates. All references to acreage, square footage and other measurements contained in this presentation are approximations.

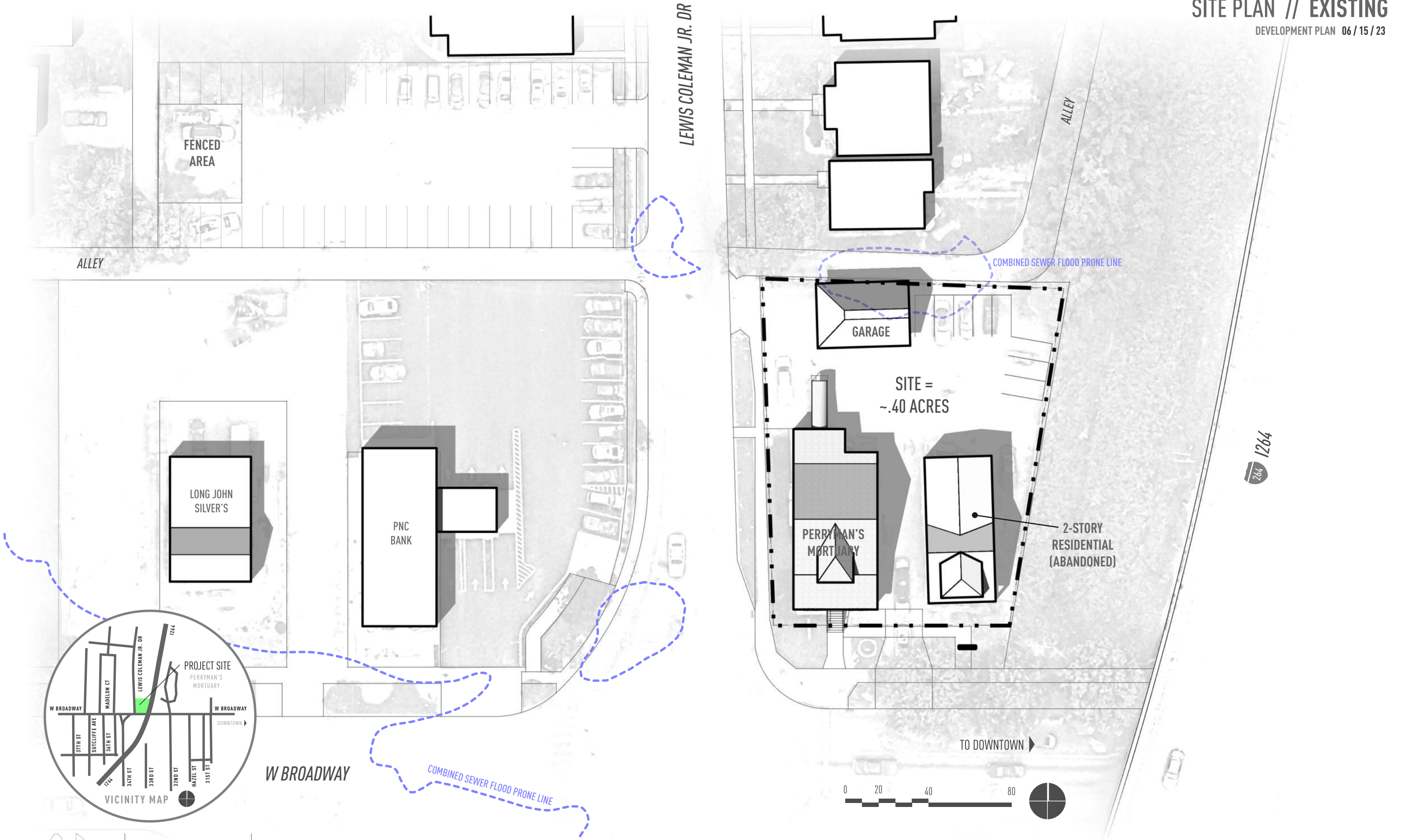
VICINITY MAP





SITE PLAN // EXISTING

DEVELOPMENT PLAN 06 / 15 / 23





SITE PLAN // DEMO

DEVELOPMENT PLAN 06 / 15 / 23





SITE PLAN // PROPOSED

DEVELOPMENT PLAN 06 / 15 / 23

PARKING

NEW SURFACE PARKING LOT,  
SIDEWALKS AND CURBS

TOTAL = 15 SPACES

1-STORY ENTRY CONNECTOR

PROMINENT ENTRY THAT WILL  
CONNECT BETWEEN EXISTING  
BUILDING AND NEW CHAPEL

PATIO ENTRY COURT  
TOTAL = 900 SF

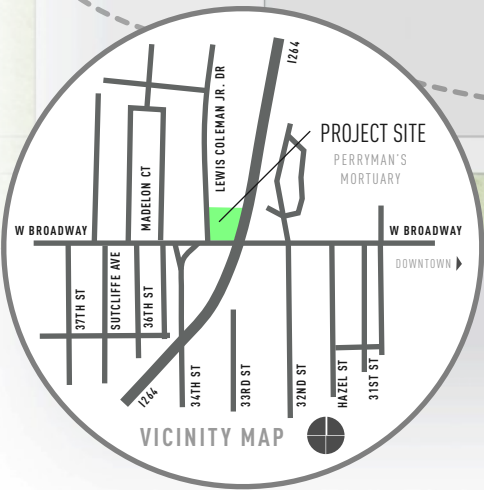
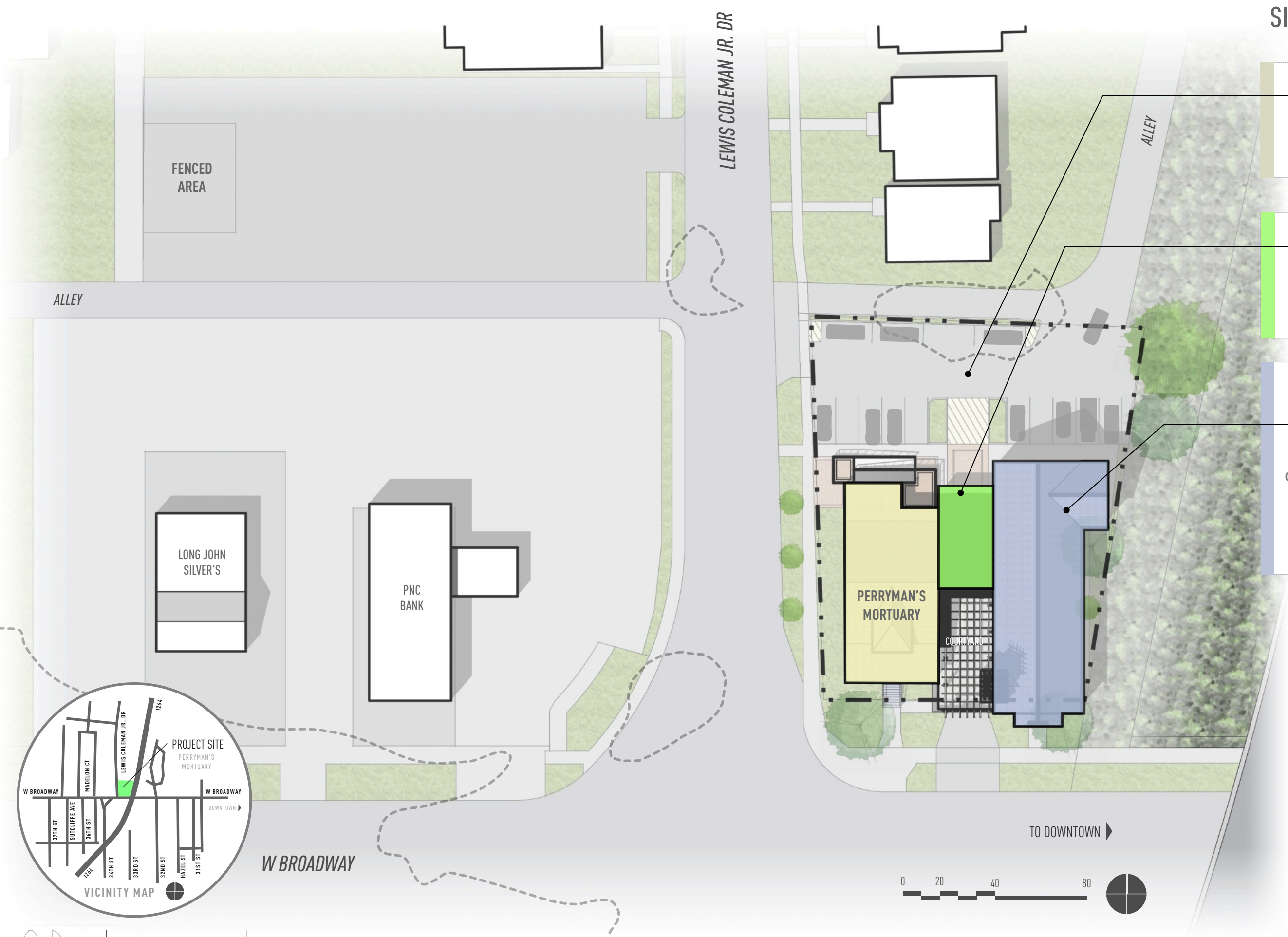
2-STORY MULTI-USE  
SANCTUARY

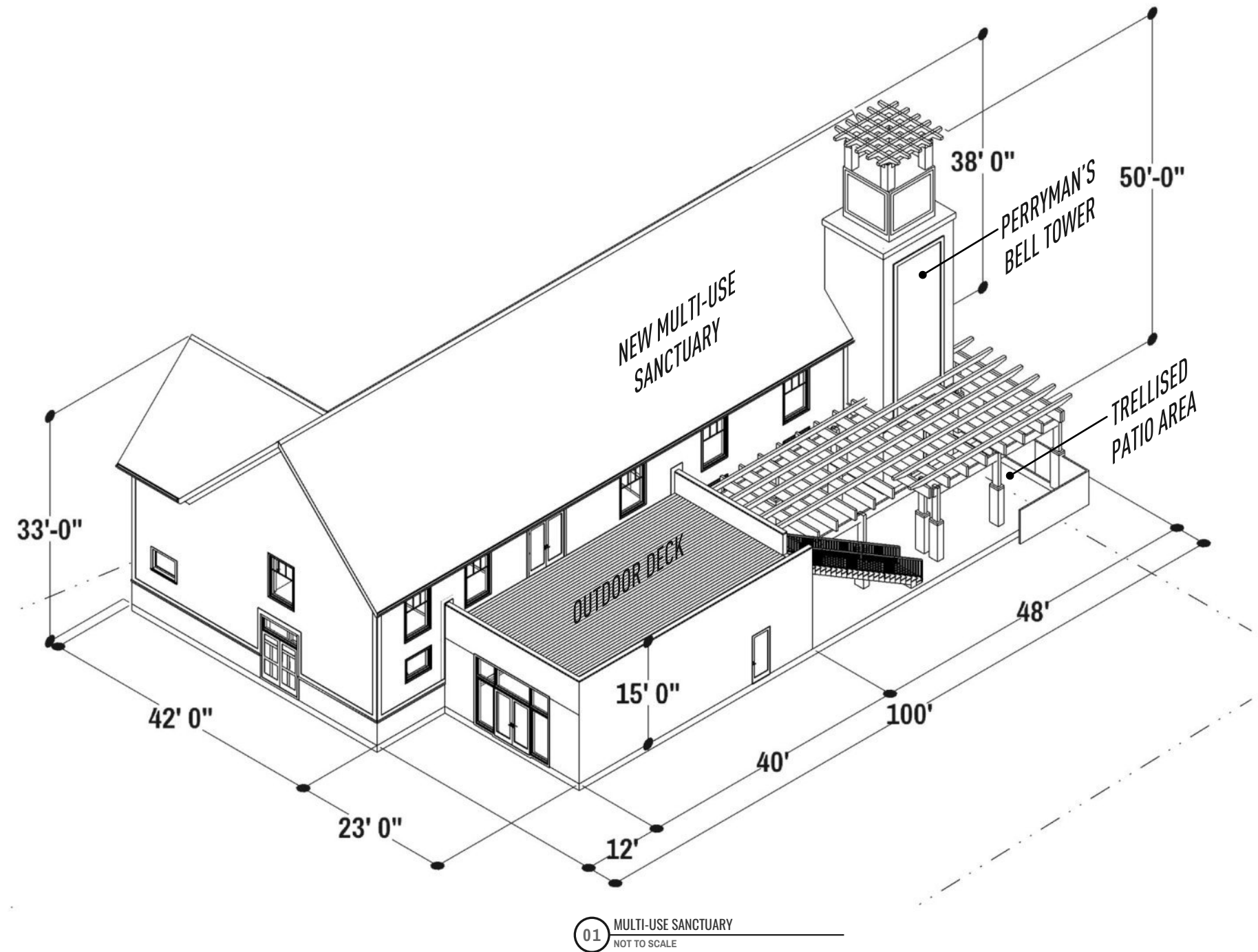
NEW BUILDING FOR SERVICES  
& EVENTS

CLERESTORY WINDOWS ON EAST SIDE  
TO BLOCK VIEW OF EXPRESSWAY

TOWER ELEMENT AS ICON OF  
PERRYMAN'S AND NEIGHBORHOOD

TOTAL = 4,000 SF







EXISTING



COMPLETED



VIEW FROM BROADWAY



EXISTING



COMPLETED



BIRDSEYE VIEW ALONG COLEMAN DR,



EXISTING



COMPLETED



BIRDSEYE VIEW AT MAIN ENTRANCE