

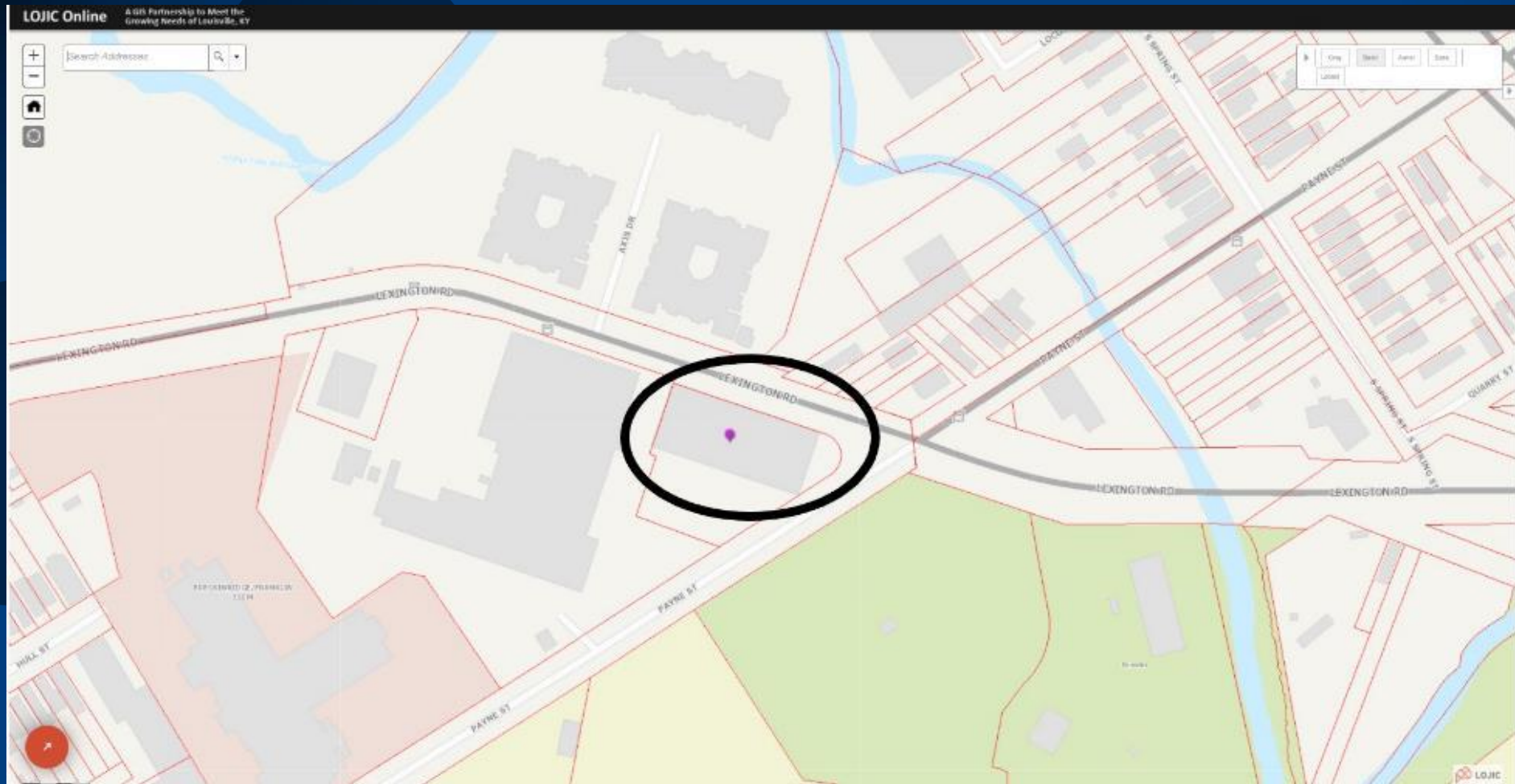
Case No. 20-LANDMARK-0003

Nelson Distillery Warehouse
100 Distillery Commons

Landmarks Commission
Develop Louisville
December 17, 2020



Location



Located in Council District 4 – Barbara Sexton-Smith

Nelson Distillery Warehouse (South Elevation)



Nelson Distillery Warehouse (East Elevation)



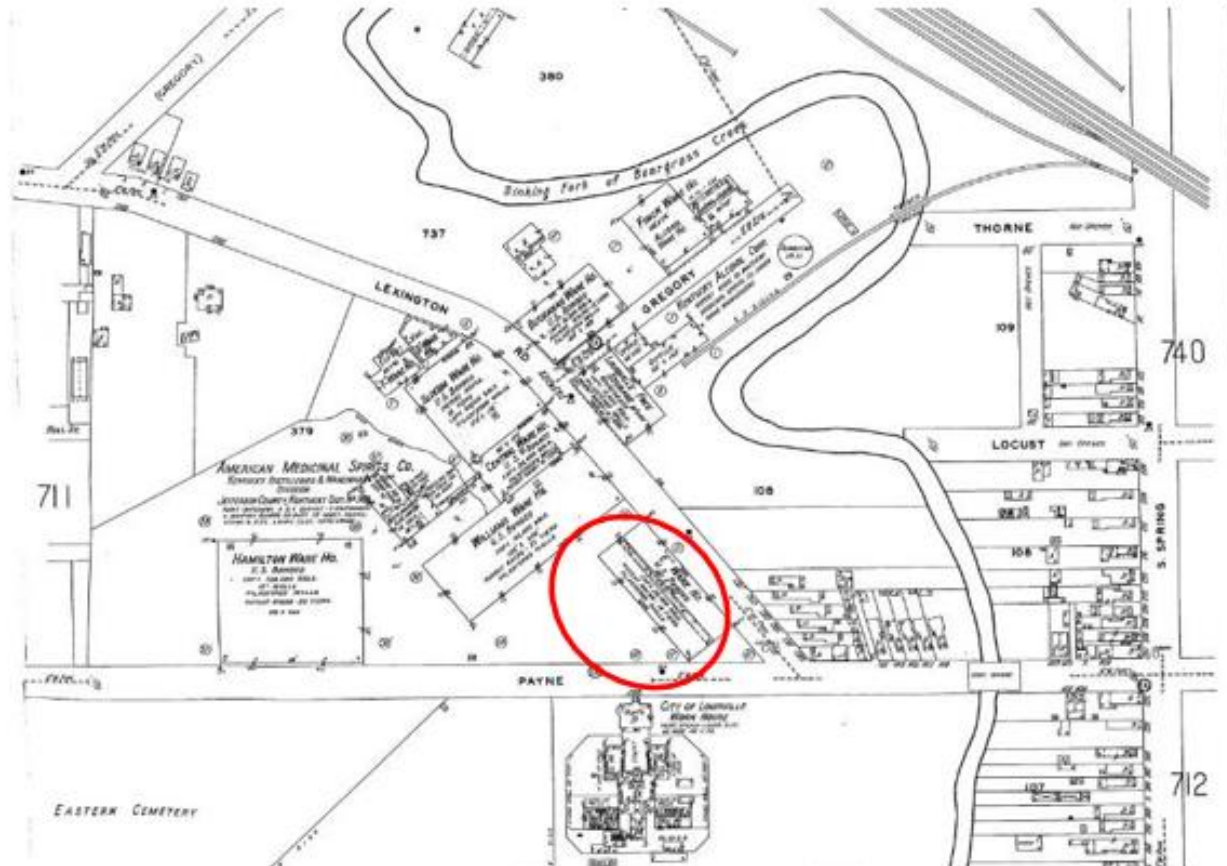
Nelson Distillery Warehouse (North Elevation)



Nelson Distillery Warehouse (West Elevation)



Nelson Distillery Warehouse



1928 Sanborn Fire Insurance Map with the Nelson Distillery Complex shown at the intersection Payne Street and Lexington Road (subject area within red circle).

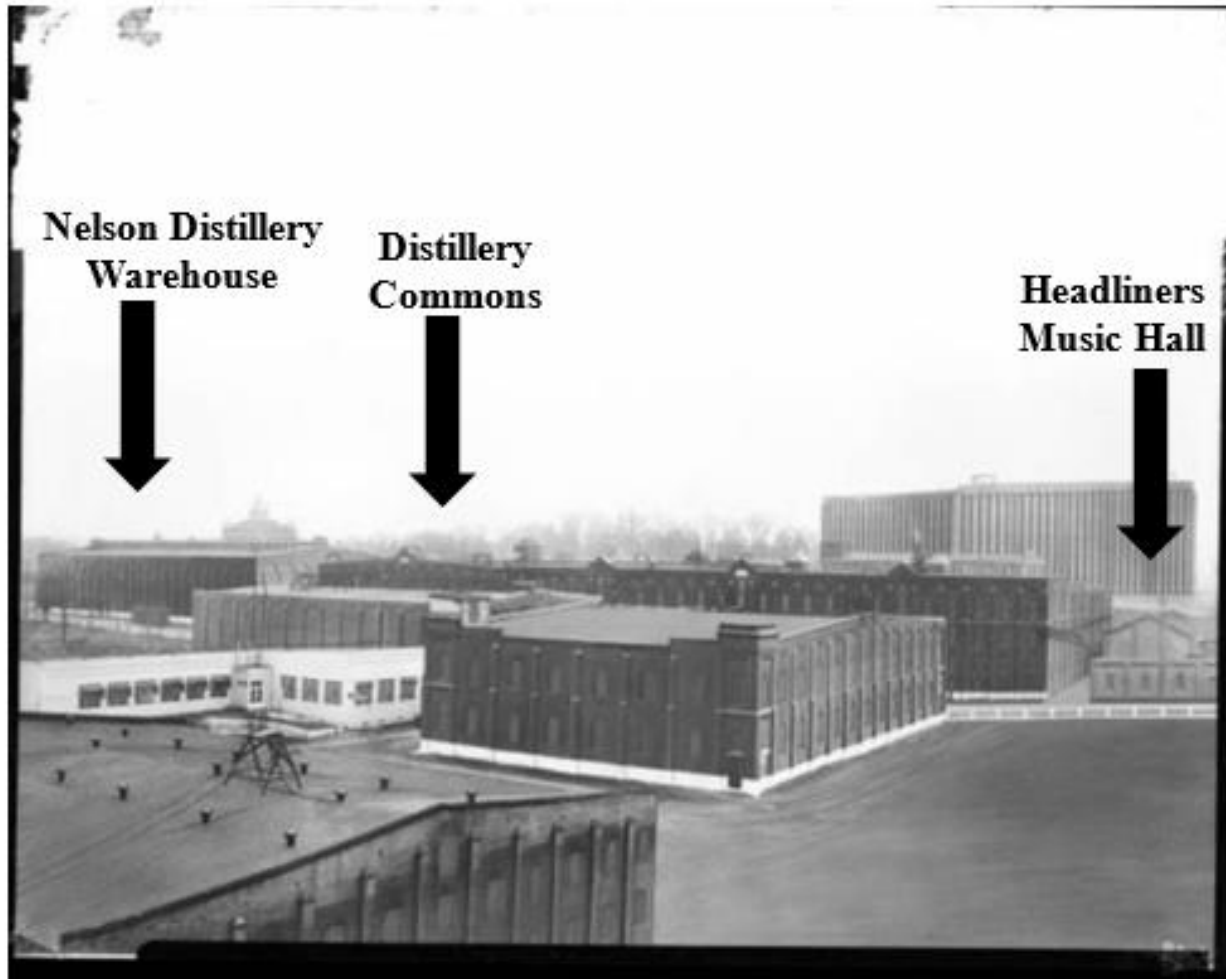
Integrity

Per 32.260 (O), “An Individual Landmark shall possess sufficient integrity to meet criterion (a) and one or more of the other criteria (b) through (e).”

- Location
- Design
- Setting
- Materials
- Workmanship
- Feeling
- Association



Nelson Distillery Warehouse



Historic Photo showing the locations of the Nelson Distillery Warehouse and other extant buildings.

Nelson Distillery Warehouse



Google Photo showing the locations of the Nelson Distillery Warehouse and other extant buildings.



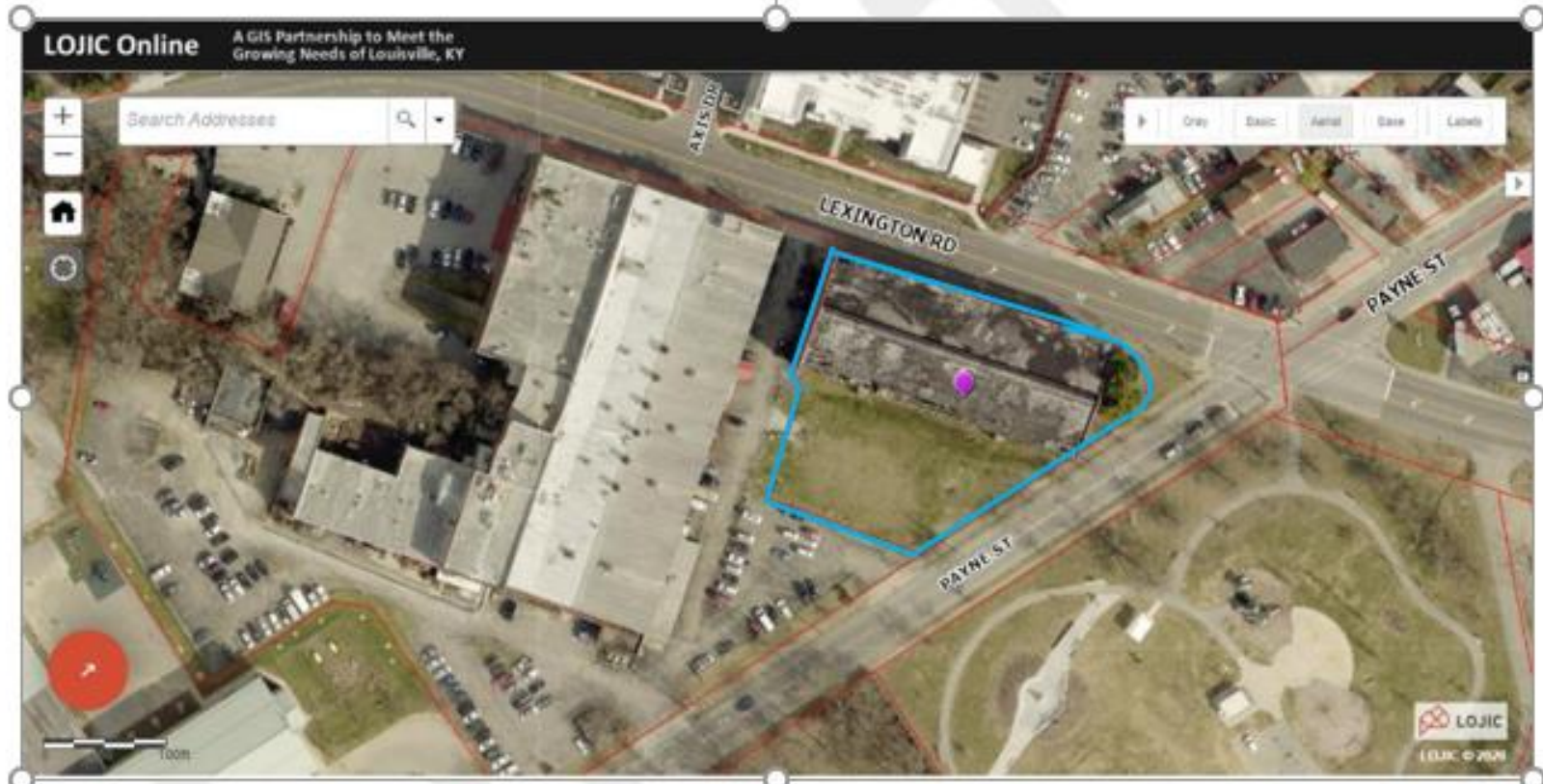
Staff Photograph 2020

Nelson Distillery Warehouse



Proposed Boundary

(blue boundary line)



LOJIC aerial showing location of the designation boundary for the Nelson Distillery Warehouse (blue line).