



LEGEND

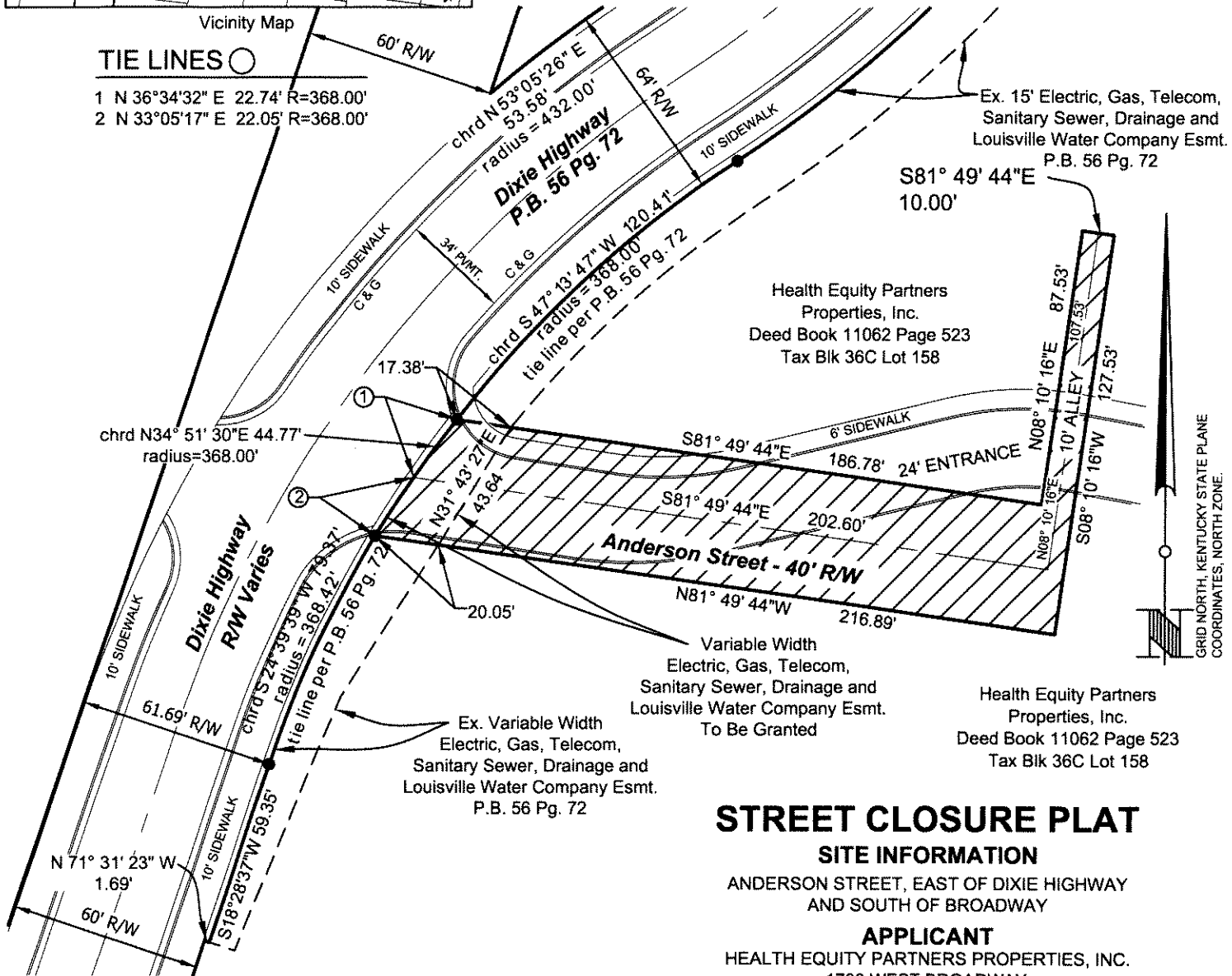
-  STREET TO BE CLOSED
9169 SQUARE FEET
-  IRON PIN W/CAP 2328 OR
MAG NAIL W/WASHER 2328

NOTES

1. THIS STREET CLOSURE AREA IS TO BE CONSOLIDATED WITH THE PROPERTY OF HEALTH EQUITY PARTNERS PROPERTIES, INC. SHOWN HEREON.
2. ALL DEVELOPMENT SHALL BE IN ACCORDANCE WITH CASE 17DEVPLAN1150.

TIE LINES

- 1 N 36°34'32" E 22.74' R=368.00'
- 2 N 33°05'17" E 22.05' R=368.00'



GRID NORTH, KENTUCKY STATE PLANE COORDINATES, NORTH ZONE.

STREET CLOSURE PLAT
SITE INFORMATION

ANDERSON STREET, EAST OF DIXIE HIGHWAY
AND SOUTH OF BROADWAY

APPLICANT

HEALTH EQUITY PARTNERS PROPERTIES, INC.
1700 WEST BROADWAY
LOUISVILLE, KY 40203

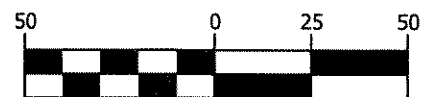
ZONING: EZ1 FORM DISTRICT: TRADITIONAL WORKPLACE
PROPOSED USE: PARKING

BTM ENGINEERING, INC.

Consulting Engineers Landscape Architects Planners
3001 Taylor Springs Drive
Louisville, Kentucky 40220
(502) 459-8402
Fax (502) 459-8427




Date: 3/5/2020 Project No 200063 Scale: 1"= 50' Sheet 1 of 1



LAND SURVEYOR'S CERTIFICATE

I hereby certify that this Street Closure Plat and survey were made under my supervision, and that the angular and linear measurements as witnessed by monuments shown hereon are true and correct to the best of my knowledge and belief. This survey does not represent a boundary survey and is not intended for land transfer.

STATE of KENTUCKY
J. CRAIG MOUNT
2227
LICENSED PROFESSIONAL LAND SURVEYOR


J. CRAIG MOUNT, PLS 2227
MAY 19, 2020
DATE: