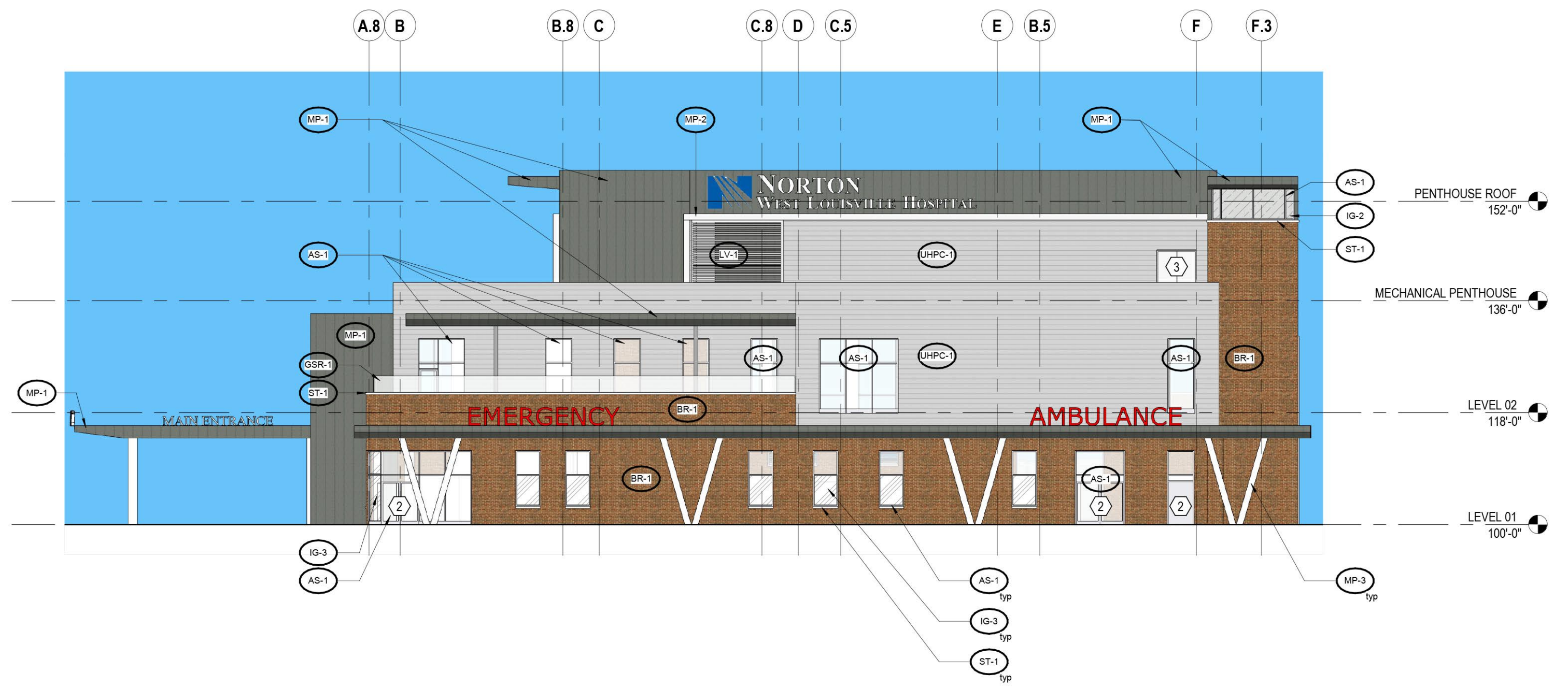
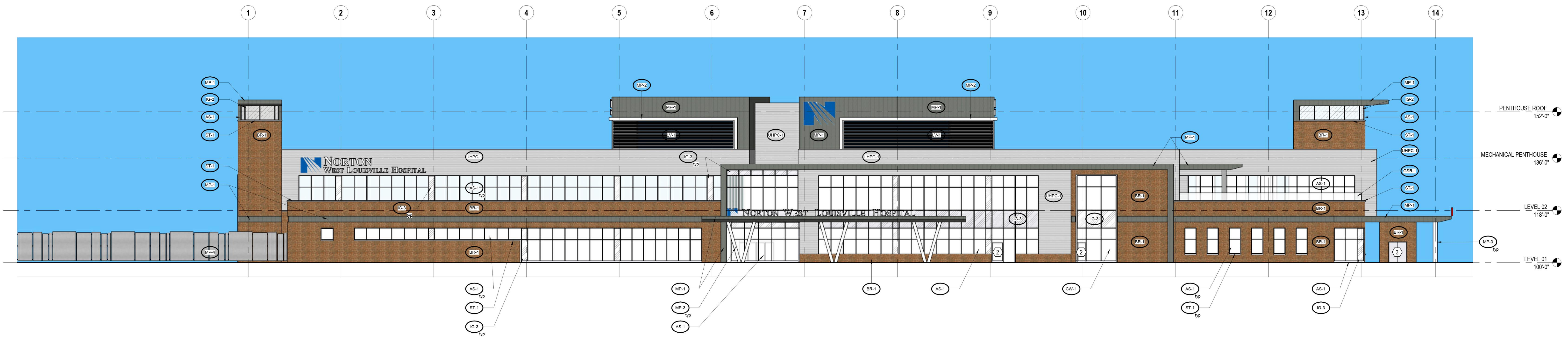


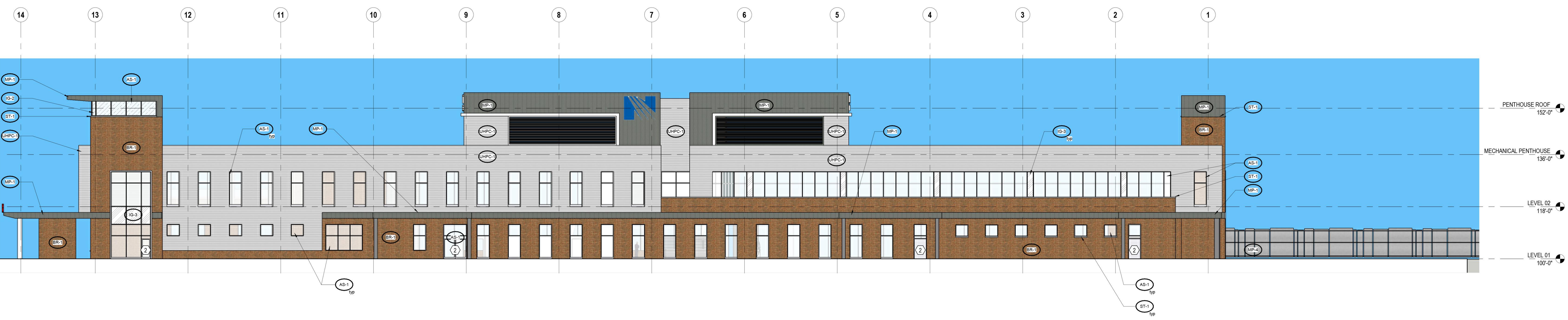
**4 ELEVATION SOUTH**  
1/16" = 1'-0" REF: 1 / A101



**3 ELEVATION NORTH**  
1/16" = 1'-0" REF: 1 / A101



**2 ELEVATION EAST**  
1/16" = 1'-0" REF: 1 / A101



**1 ELEVATION WEST**  
1/16" = 1'-0" REF: 1 / A101

**GENERAL NOTES - EXTERIOR ELEVATIONS**

A. REFER TO SHEET A300 FOR EXTERIOR ILLUMINATED SIGNAGE LOCATIONS.

**CODED NOTE LEGEND**

1. FIRE RATED SYSTEM
2. ENTRY SYSTEM
3. PAINTED METAL DOOR AND FRAME

**EXTERIOR GLAZING TYPES**

- EXTERIOR INSULATED GLAZING (CLEAR)
- EXTERIOR INSULATED GLAZING (TRANSLUCENT)
- EXTERIOR INSULATED GLAZING (SPANDREL - LIGHT GRAY)

**MATERIAL LEGEND**

- METAL PANEL - DARK GRAY
- METAL PANEL - LIGHT GRAY
- "Y" SHAPED COLUMN
- METAL PANEL - SCREEN WALL - 10'-0" (VARIES) HIGH
- BRICK
- ULTRA HIGH PERFORMANCE CONCRETE
- CAST STONE SILL
- ALUMINUM CURTAIN WALL SYSTEM
- ALUMINUM STOREFRONT SYSTEM
- LOUVERS
- GLASS SAFETY RAIL SYSTEM

#	DATE	CHANGE DESCRIPTION

**Norton West Louisville Hospital**  
850 S. 26TH STREET  
LOUISVILLE, KY 40211  
FOR  
**Norton Healthcare, Inc.**

**MOODY-NOLAN**  
300 SPRUCE STREET  
SUITE 300  
COLUMBUS, OHIO 43215  
PHONE: (614) 461-4664  
FAX: (614) 280-8881

**EXTERIOR ELEVATIONS - COLOR**

PROGRESS DRAWING NOT FOR CONSTRUCTION	11/04/2022
	DRAWN BY: -- CHECKED BY: --
	22163.01
<b>A302</b>	
SCHEMATIC DESIGN	