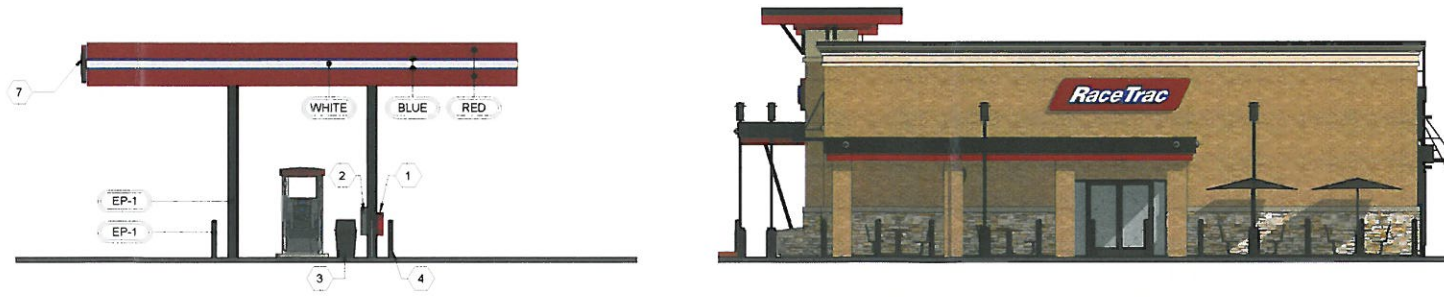


2 CANOPY FRONT ELEVATION
1/8" = 1'-0"



1 CANOPY ELEVATION
1/8" = 1'-0"

- GENERAL NOTES**
- AREA WITHIN 18'-0" OF DISPENSER BOTH HORIZONTALLY AND VERTICAL SHALL BE CLASS I, DIVISION 2
 - EXTINGUISHERS SHALL BE PROVIDED AND SO LOCATED THAT NO PUMP DISPENSER OR FILL-PIPE OPENING SHALL BE A GREATER DISTANCE THAN 50'-0" FROM SUCH DISPENSER
 - NO SMOKING SIGNS SHALL BE POSTED IN ACCORDANCE WITH LOCAL JURISDICTION REQUIREMENT
 - PVC PIPE SHALL NOT BE USED ON TOP OF CANOPY, ONLY 3/4" EMT WITH WATER TIGHT CONNECTIONS SHALL BE PERMITTED
 - REFER TO ELECTRICAL SCHEDULES FOR CANOPY CIRCUITS
 - REFER TO SITE ELECTRICAL PLAN FOR SECURITY CAMERA LOCATIONS AND MOUNTING
 - REFER TO FINISH SCHEDULES FOR MATERIAL SPECIFICATIONS
 - REFER TO SITE PLAN FOR NUMBER OF CANOPY SIGNS TO BE PLACED
 - REFER TO MANUFACTURERS SHOP DRAWINGS FOR ALL STRUCTURAL DETAILS
 - REFER TO SITE SPECIFIC PLAN FOR CANOPY LIGHTING LAYOUT
 - REFER TO SITE SPECIFIC PLAN FOR CONCRETE ISLAND LAYOUT
 - REFER TO CANOPY MANUFACTURER'S DRAWINGS FOR FOUNDATION INFORMATION AND COLUMN SURROUND.

- SHEET KEYNOTES**
- M2M RED MARK II CABINET WITH RED COVER, ON BACK SIDE OF COLUMN COVER. PROVIDE ONE 80-B RATED EXTINGUISHER
 - TOWEL DISPENSER "DCI MARKETING" ITEM NUMBER SBWC BLACK
 - TRASH CAN. REFER TO SITE PLANS
 - BUMPER POST. REFER TO CIVIL SITE DETAIL SHEETS
 - WOODFORD Y-34 FREEZERLESS IOWA YARD HYDRANT
 - STEEL CANOPY COLUMN, PAINTED EP-1
 - RACETRAC LOGO, REFER TO SIGN PLAN

FUEL CANOPY FINISH SCHEDULE

ID	MANUF.	MATERIAL	COMMENTS
FASCIA			
BLUE		2" BLUE STRIPE	
RED		REFER TO SPECIFICATION CHART ON SHEET C100	
WHITE		8" WHITE STRIPE	
PAINT			
EP-1	SHERWIN WILLIAMS	EXTERIOR PAINT TO SW #7020 "BLACK FOX"	

STANDARD CANOPY FASCIA COLOR SPECIFICATION CHART

COLOR CALLOUT	CANOPY MANUFACTURER	STANDARD COLOR SPECIFICATION
"TAN"	LANE CANOPIES	ETT TAN FASCIA
	McGEE CANOPIES	ETT TAN FASCIA
	MADISON CANOPIES	PUEBLO TAN FASCIA
"RED"	LANE CANOPIES	TRD RED FASCIA
	McGEE CANOPIES	TRD RED FASCIA - PROGRAM RED
	MADISON CANOPIES	PROGRAM RED FASCIA

RECEIVED
MAR 30 2020
PLANNING & DESIGN SERVICES

RaceTrac
COPYRIGHT NOTICE
THESE PLANS ARE SUBJECT TO FEDERAL COPYRIGHT LAWS. ANY USE OF SAME WITHOUT THE EXPRESSED WRITTEN PERMISSION OF RACETRAC PETROLEUM, INC. IS PROHIBITED. 2016 RACETRAC PETROLEUM INC.

DESIGN PROFESSIONALS

Hill Foley Rossi & Associates
ARCHITECTURE
ENGINEERING

3680 Pleasant Hill Road
Suite 200
Duluth, Georgia 30096
p 770.622.9858
f 770.622.9535
www.hillfoleyrossi.com

ISSUE/REVISION RECORD

DATE	DESCRIPTION
03/26/2020	PRELIMINARY SUBMITTAL

RaceTrac
RACETRAC PETROLEUM, INC.
200 GALLERIA PARKWAY SOUTHEAST
SUITE 900
ATLANTA, GEORGIA 30339
(770) 451-7600

PROJECT NAME
FLOWERVALE

KENTUCKY
DIXIE HWY @
FLOWERVALE LN.
LOUISVILLE, KY 40272

RACETRAC STORE NUMBER
#1448

PROTOTYPE SERIES 5.SK 2.0
2020 RH MO 0113

PLAN MODIFICATION NOTICE
SPB NO. 0113 DATE 02/18/20

STANDARD PLAN BULLETINS (SPB) MODIFY THE PROTOTYPE SERIES SET NOTED ABOVE. THE LISTED SPB REPRESENTS THE LATEST MODIFICATION INCORPORATED TO THIS PROTOTYPE SERIES SET AT ORIGINAL RELEASE. THE ISSUE/REVISION RECORD COLUMN ABOVE LISTS ANY REVISIONS OR SPB INCORPORATED IN THIS SET AFTER THE ORIGINAL RELEASE. CONTACT RACETRAC ENGINEERING AND CONSTRUCTION FOR ANY SUBSEQUENT BULLETINS NOT INCORPORATED HEREIN.

PROFESSIONAL SEAL

03.26.2020

PROJECT NUMBER
20.703.00

SHEET TITLE
FUEL CANOPY ELEVATIONS

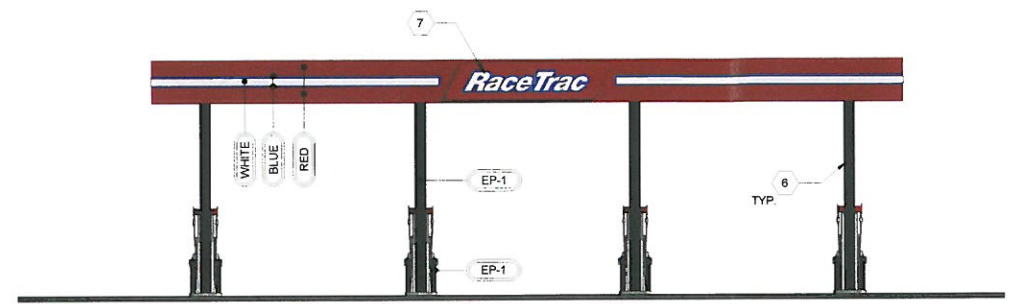
SHEET NUMBER
C100
PRELIMINARY SUBMITTAL

20 - ZONE - 0034

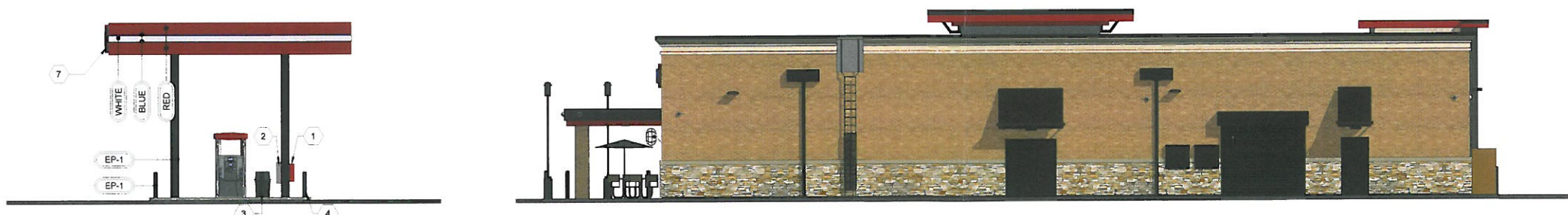


ISSUE/REVISION RECORD

DATE	DESCRIPTION
03/26/2020	PRELIMINARY SUBMITTAL



2 EDO CANOPY FRONT ELEVATION
 1/8" = 1'-0"



1 EDO CANOPY ELEVATION
 1/8" = 1'-0"

GENERAL NOTES

- AREA WITHIN 18'-0" OF DISPENSER BOTH HORIZONTALLY AND VERTICAL SHALL BE CLASS 1, DIVISION 2
- EXTINGUISHERS SHALL BE PROVIDED AND SO LOCATED THAT NO PUMP DISPENSER OR FILL-PIPE OPENING SHALL BE A GREATER DISTANCE THAN 50'-0" FROM SUCH DISPENSER.
- NO SMOKING SIGNS SHALL BE POSTED IN ACCORDANCE WITH LOCAL JURISDICTION REQUIREMENT.
- PVC PIPE SHALL NOT BE USED ON TOP OF CANOPY. ONLY 3/4" EMT WITH WATER TIGHT CONNECTIONS SHALL BE PERMITTED.
- REFER TO ELECTRICAL SCHEDULES FOR CANOPY CIRCUITS.
- REFER TO SITE ELECTRICAL PLAN FOR SECURITY CAMERA LOCATIONS AND MOUNTING.
- REFER TO FINISH SCHEDULES FOR MATERIAL SPECIFICATIONS.
- REFER TO SITE PLAN FOR NUMBER OF CANOPY SIGNS TO BE PLACED.
- REFER TO MANUFACTURERS SHOP DRAWINGS FOR ALL STRUCTURAL DETAILS.
- REFER TO SITE SPECIFIC PLAN FOR CANOPY LIGHTING.
- REFER TO SITE SPECIFIC PLAN FOR CONCRETE ISLAND LAYOUT.
- REFER TO CANOPY MANUFACTURER'S DRAWINGS FOR FOUNDATION INFORMATION AND COLUMN SURROUND.

SHEET KEYNOTES

- 1/2" M RED MARK II CABINET WITH RED COVER, ON BACK SIDE OF COLUMN COVER. PROVIDE ONE 60-B RATED EXTINGUISHER
- TOWEL DISPENSER "DCI MARKETING" ITEM NUMBER SBWC-BLACK
- TRASH CAN. REFER TO SITE PLANS
- BUMPER POST. REFER TO CIVIL SITE DETAIL SHEETS.
- WOODFORD Y-34 FREEZERLESS IOWA YARD HYDRANT
- STEEL CANOPY COLUMN, PAINTED EP-1
- RACETRAC LOGO, REFER TO SIGN PLAN

FUEL CANOPY FINISH SCHEDULE

ID	MANUF.	MATERIAL	COMMENTS
FASCIA			
BLUE			2" BLUE STRIPE
RED			REFER TO SPECIFICATION CHART ON SHEET C100
WHITE PAINT			8" WHITE STRIPE
EP-1	SHERWIN WILLIAMS	EXTERIOR PAINT TO SW 47000 "BLACK FOX"	

STANDARD CANOPY FASCIA COLOR SPECIFICATION CHART

COLOR CALLOUT	CANOPY MANUFACTURER	STANDARD COLOR SPECIFICATION
"TAN"	LANE CANOPIES	ETT TAN FASCIA
	McGEE CANOPIES	ETT TAN FASCIA
	MADISON CANOPIES	PUEBLO TAN FASCIA
"RED"	LANE CANOPIES	TRD RED FASCIA
	McGEE CANOPIES	TRD RED FASCIA - PROGRAM RED
	MADISON CANOPIES	PROGRAM RED FASCIA



RACETRAC PETROLEUM, INC.
 200 GALLERIA PARKWAY SOUTHEAST
 SUITE 600
 ATLANTA, GEORGIA 30339
 (770) 431-7600

PROJECT NAME
FLOWERVALE

KENTUCKY
 DIXIE HWY @
 FLOWERVALE LN.
 LOUISVILLE, KY 40272

RACETRAC STORE NUMBER
#1448

PROTOTYPE SERIES 6.5K 2.0
 2020 RH MO 0113

PLAN MODIFICATION NOTICE
 SPB NO. 0113 DATE 02/18/20

STANDARD PLAN BULLETINS (SPB) MODIFY THE PROTOTYPE SERIES SET NOTED ABOVE. THE LISTED SPB REPRESENTS THE LATEST MODIFICATION INCORPORATED TO THIS PROTOTYPE SERIES SET AT ORIGINAL RELEASE. THE ISSUE/REVISION RECORD COLUMN ABOVE LISTS ANY REVISIONS OR SPB INCORPORATED IN THIS SET AFTER THE ORIGINAL RELEASE. CONTACT RACETRAC ENGINEERING AND CONSTRUCTION FOR ANY SUBSEQUENT BULLETINS NOT INCORPORATED HEREIN.

PROFESSIONAL SEAL



PROJECT NUMBER
 20.703.00

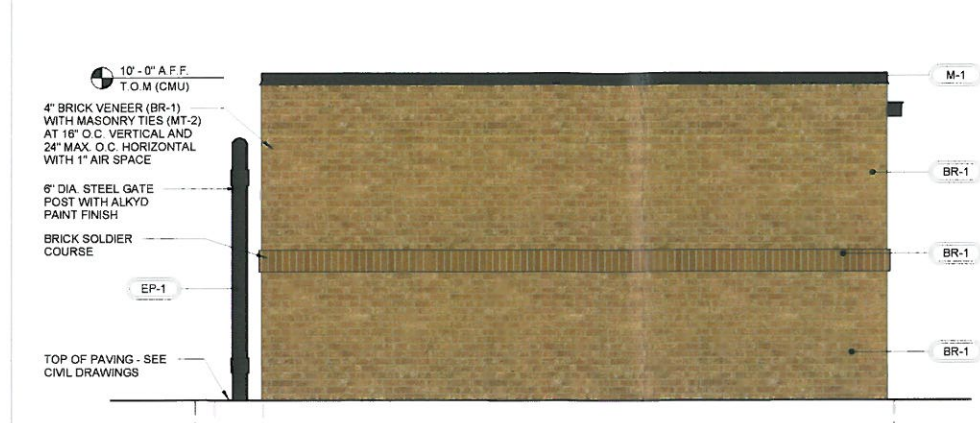
SHEET TITLE
FUEL CANOPY ELEVATIONS

SHEET NUMBER
C200

PRELIMINARY SUBMITTAL

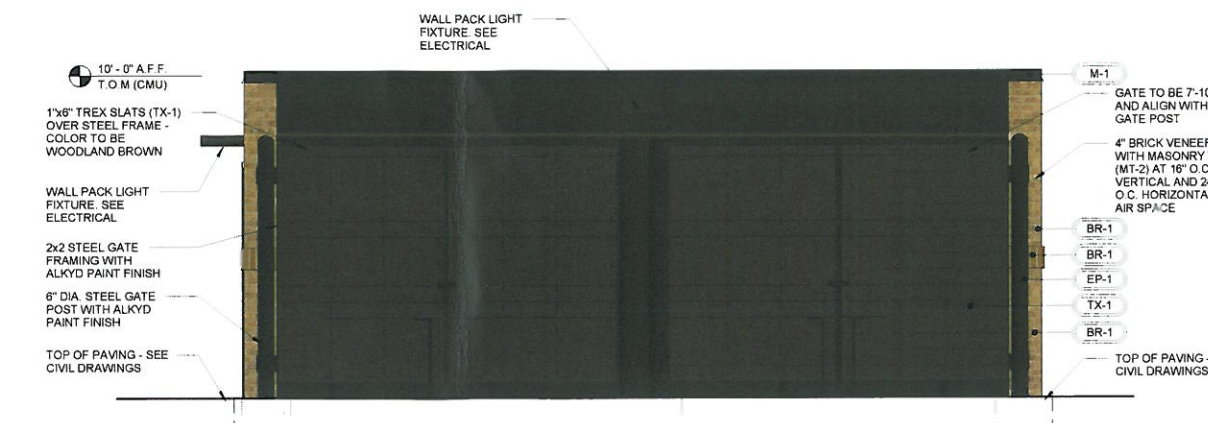
RECEIVED
 MAR 30 2020
 PLANNING &
 DESIGN SERVICES

DUMPSTER FINISH SCHEDULE			
ID	MANUF.	MATERIAL	COMMENTS
BRICK	BORAL	LAREDO BRICK	MORTAR COLOR "LIGHT BUFF"
METAL		PREFINISHED 4" 2-PIECE COMPRESSION METAL COVER	METAL TO MATCH STOREFRONT COLOR DARK BRONZE
PAINT	SHERWIN WILLIAMS	EXTERIOR PAINT TO SW #7020 "BLACK FOX"	
TREX	SELECT COMPOSITE	1/2" THICKNESS	WOODLAND BROWN



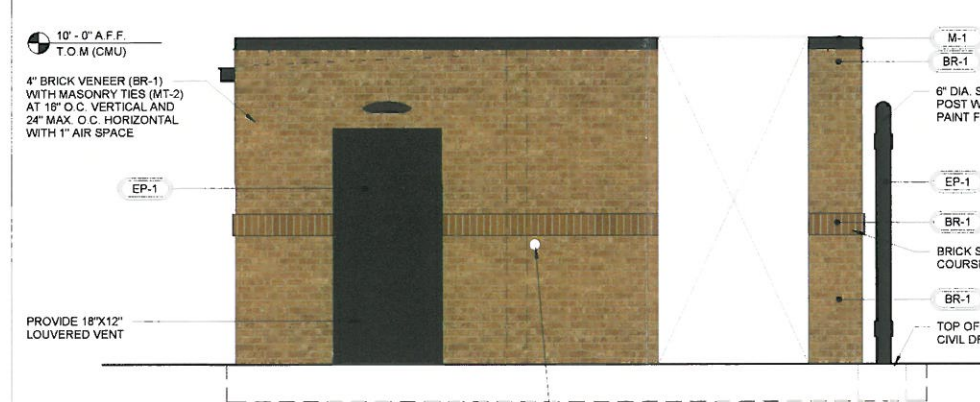
RIGHT ELEVATION (NON-ENTRY)			
MATERIAL	SQ. FOOT.	% OF ELEVATION	TOTAL SF
STONE	0	0%	198
BRICK	190	96%	
EIFS	0	0%	
GLAZING	0	0%	
METAL	8	4%	
WOOD	0	0%	

4 DUMPSTER ENCLOSURE RIGHT ELEVATION
3/8" = 1'-0"



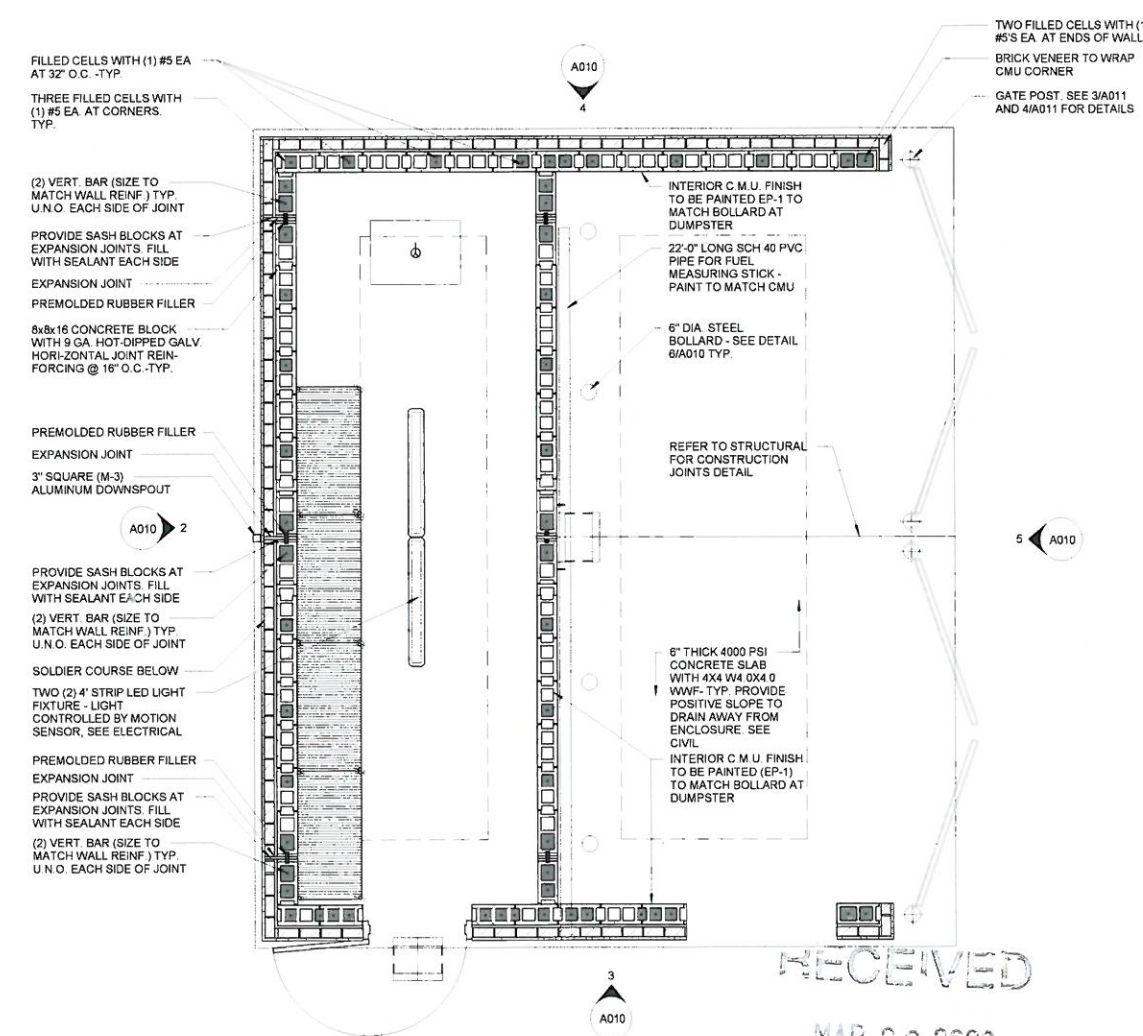
FRONT ELEVATION			
MATERIAL	SQ. FOOT.	% OF ELEVATION	TOTAL SF
STONE	0	0%	252
BRICK	20	8%	
EIFS	0	0%	
GLAZING	0	0%	
METAL	78	31%	
WOOD	154	61%	

5 DUMPSTER ENCLOSURE FRONT ELEVATION
3/8" = 1'-0"

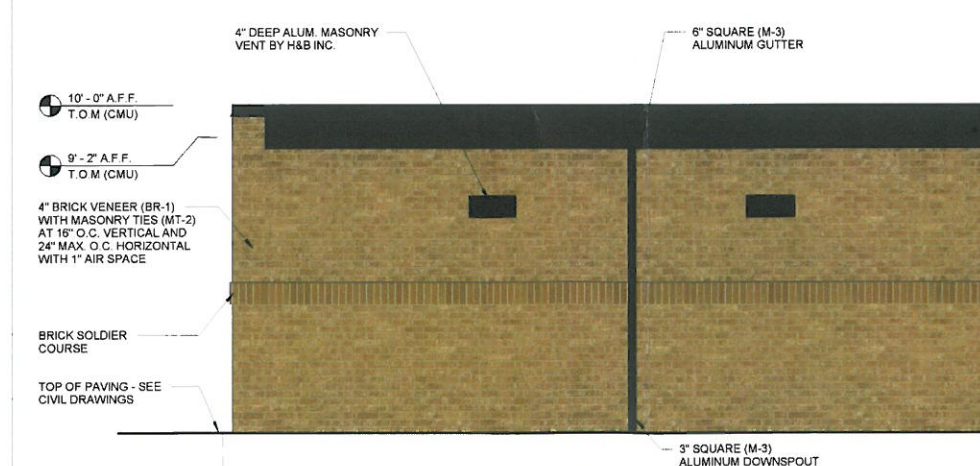


LEFT ELEVATION (ENTRY)			
MATERIAL	SQ. FOOT.	% OF ELEVATION	TOTAL SF
STONE	0	0%	150
BRICK	120	80%	
EIFS	0	0%	
GLAZING	0	0%	
METAL	30	20%	
WOOD	0	0%	

3 DUMPSTER ENCLOSURE LEFT ELEVATION
3/8" = 1'-0"



1 DUMPSTER ENCLOSURE PLAN
3/8" = 1'-0"



REAR ELEVATION			
MATERIAL	SQ. FOOT.	% OF ELEVATION	TOTAL SF
STONE	0	0%	252
BRICK	218	86%	
EIFS	0	0%	
GLAZING	0	0%	
METAL	34	14%	
WOOD	0	0%	

2 DUMPSTER ENCLOSURE REAR ELEVATION
3/8" = 1'-0"



RECEIVED
MAR 30 2020
PLANNING & DESIGN SERVICES

20 - ZONE 1 - 0034

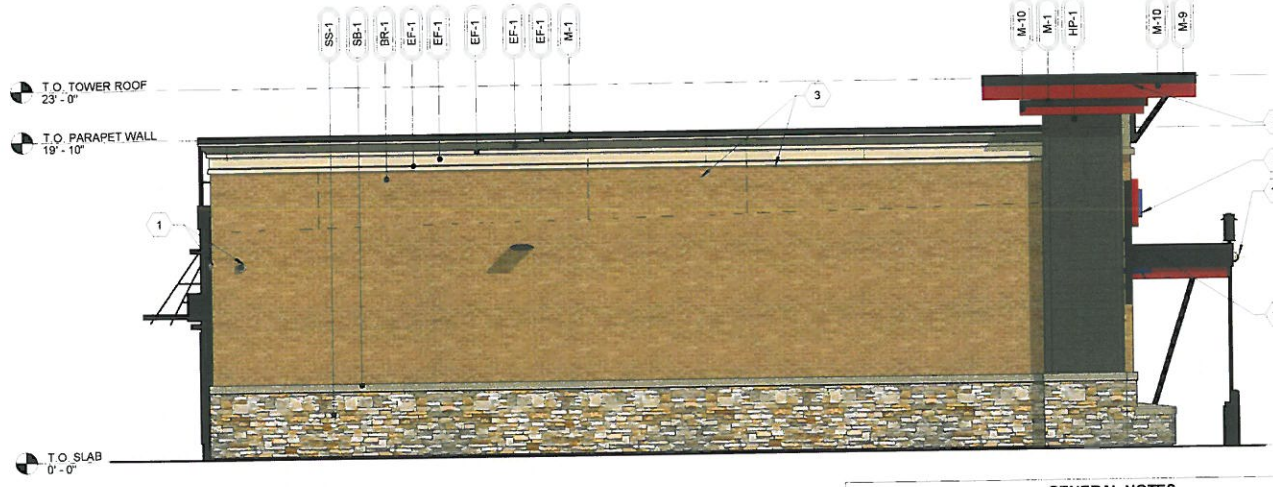
ISSUE/REVISION RECORD

DATE	DESCRIPTION
03.26.2020	PRELIMINARY SUBMITTAL



RIGHT ELEVATION (ENTRY)
 1,200 TOTAL SF

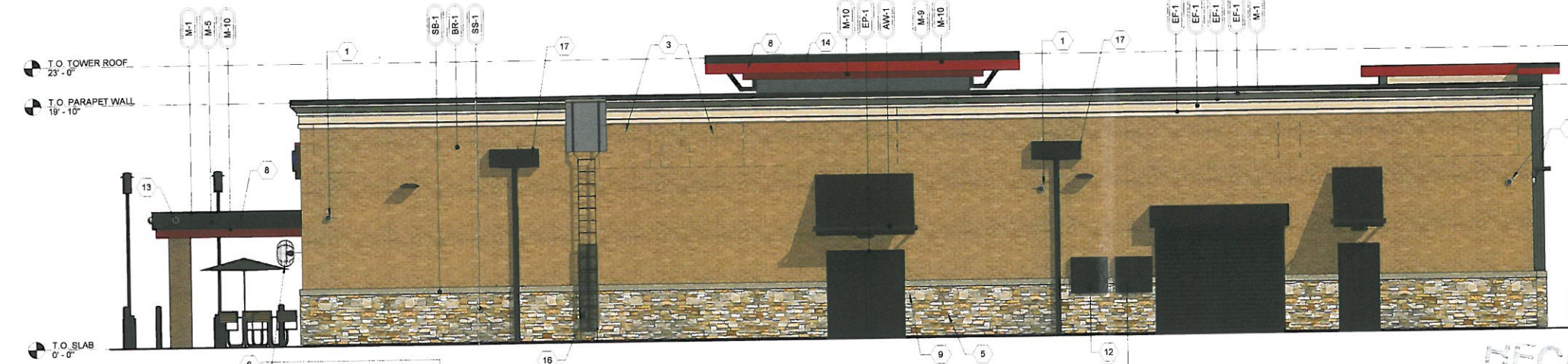
MATERIAL	SQ. FOOT.	% OF ELEVATION
STONE	198	16%
BRICK	697	58%
EIFS	112	9%
GLAZING	62	5%
METAL	131	11%
WOOD	0	0%



LEFT ELEVATION (NON-ENTRY)
 1,203 TOTAL SF

MATERIAL	SQ. FOOT.	% OF ELEVATION
STONE	272	23%
BRICK	693	57%
EIFS	99	8%
GLAZING	0	0%
METAL	64	5%
WOOD	75	7%

3 LEFT ELEVATION
 3/16" = 1'-0"



REAR ELEVATION
 2,111 TOTAL SF

MATERIAL	SQ. FOOT.	% OF ELEVATION
STONE	374	17%
BRICK	1,204	57%
EIFS	182	9%
GLAZING	0	0%
METAL	336	16%
WOOD	15	1%

2 REAR ELEVATION
 3/16" = 1'-0"



FRONT ELEVATION
 2,163 TOTAL SF

MATERIAL	SQ. FOOT.	% OF ELEVATION
STONE	421	19%
BRICK	849	40%
EIFS	181	8%
GLAZING	331	15%
METAL	170	8%
WOOD	211	10%

1 FRONT ELEVATION
 3/16" = 1'-0"

- GENERAL NOTES**
- CONTRACTOR SHALL VERIFY ALL EXTERIOR MATERIAL COLOR AND FINISHES WITH THE ARCHITECT. ANY DISCREPANCIES NOTED SHALL BE BROUGHT TO THE ATTENTION OF THE ARCHITECT FOR CLARIFICATION.
 - PROVIDE EXPANSION JOINTS (EJ) AT ALL LOCATIONS WHERE EIFS ABUTS A DISSIMILAR MATERIAL OR WHERE OTHERWISE REQUIRED BY MANUFACTURER.
 - PROVIDE EXPANSION JOINTS (EJ) AS LOCATED ON EXTERIOR ELEVATION. SPECIFICATION FOR JOINT SEALANT SHALL BE "PRECAST WHITE" SL-2 BY TREMCO.
 - MAXIMUM SPACING OF EXPANSION JOINTS SHALL BE 15'-0" O.C. OR PER MANUFACTURER RECOMMENDATION.
 - REFER TO LIGHTING PLANS FOR LIGHTING FIXTURE LOCATION AND SCHEDULE.
 - REFER TO STRUCTURAL DRAWINGS FOR JOIST AND BEAM BEARING AND FOUNDATIONS.
 - REFER TO REFLECTED CEILING PLANS FOR COMPLETE DIMENSIONS OF ACM JOINT LOCATIONS.

- ELEVATION KEYNOTES**
- WALL MOUNTED SECURITY CAMERA
 - NOT USED
 - MECHANICAL EQUIPMENT BEYOND
 - REFER TO DETAILS ON SHEET A431 FOR CAST STONE SHAPE
 - HOSE BIB, REFER TO PLUMBING DRAWINGS
 - PATIO FAN, REFER TO SPECIFICATIONS
 - ILLUMINATED SIGN PANEL BY OWNER MOUNTED ON RACEWAY
 - ACM PANEL REVEAL LINE, REFER TO REFLECTED CEILING PLAN FOR DIMENSIONS
 - INTERCOM AND SPEAKER
 - EMERGENCY FUEL SHUT OFF SWITCH, MOUNT TOP OF SIGN AT 48" A.F.F.
 - LOCATION OF ELECTRICAL SERVICE GFI AND METER
 - GENERATOR TAP BOX - SEE ELECTRICAL FOR LOCATION
 - SECURITY CAMERA MOUNTED TO FASCIA
 - OVERFLOW SPILL SCUPPER
 - PACKAGE PASSER, REFER TO EQUIPMENT PLAN
 - PROVIDE METAL GUARD GATE AT LADDER TO 8'-0" A.F.F. WITH LOCKING HASP
 - 4'-0" WIDE X 1'-7" HIGH SCUPPER, REFER TO DETAILS 9 & 10 ON SHEET A201

EXTERIOR MATERIAL SCHEDULE

AWNING	ALUMINUM AWNING	SELECTED BY RACETRAC
AW-1	ALUMINUM AWNING	SELECTED BY RACETRAC
BRICK	LAREDO BRICK	MORTAR COLOR "LIGHT BUFF"
BR-1	LAREDO BRICK	MORTAR COLOR "LIGHT BUFF"
CST STONE	MATCH BORAL TUSCAN LINTEL CHAMPAGNE	COLOR #102 NATURAL STONE, MORTAR COLOR "LIGHT BUFF", SEAL WITH (SL-5) SEALANT.
CS-1	MATCH BORAL TUSCAN LINTEL CHAMPAGNE	COLOR #102 NATURAL STONE, MORTAR COLOR "LIGHT BUFF", SEAL WITH (SL-5) SEALANT.
CEMENT BOARD	ARTISAN V-GROOVE SIDING	PAINT SHERWIN WILLIAMS SEALKIN #7675, BLIND FASTEN AND STAGGER PLANKS PER MANUFACTURER'S RECOMMENDATION
HP-1	JAMES HARDIE	ARTISAN V-GROOVE SIDING
EIFS	STO	STO THERM CI
EF-1	STO	STO THERM CI
GLAZING	GL-1	1" NON-IMPACT RATED INSULATED GLAZING
GL-2	GL-1	1" NON-IMPACT RATED ACID ETCHED INSULATED GLAZING
METAL	M-1	PREFINISHED 4" 2-PIECE COMPRESSION METAL COVER
M-2	M-1	COLOR DARK BRONZE
M-3	M-1	PREFINISHED 4" 2-PIECE COMPRESSION METAL COVER
M-4	M-1	COLOR DARK BRONZE
M-5	M-1	PREFINISHED DARK BRONZE ANODIZED ALUMINUM AA-M2C22A44
M-6	M-1	REYNOLBOND PE
M-7	M-1	REYNOLBOND PE
M-8	M-1	REYNOLBOND PE
M-10	M-1	REYNOLBOND PE
PAINT	EP-1	SHERWIN WILLIAMS #7020 "BLACK FOX"
ROOFING	DURO	DIUROLAST
STACKED STONE	SS-1	BORAL
STONE BAND	SB-1	BORAL
TREX	TX-1	SELECT COMPOSITE
WINDOW FILM	WF-1	WINDOW FILM, 3M PRESTIGE
WF-2	WINDOW FILM, OPAQUE	

ELEVATION	SIGNAGE	DIMENSIONS	AREA
FRONT	RT PARALLELOGRAM BANNER	13'-5/8" X 3'-0"	40 SF
		7'-8" X 5'-6"	42 SF

RECEIVED
 MAR 30 2020
 PLANNING & DESIGN SERVICES

20 - ZONE - 0034