



Tree Preservation Inventory

Project Name: HELCK AVENUE REZONING

Address: 1230 & 1230 R HELCK AVENUE

DEPARTMENT OF CODES & REGULATIONS
DIVISION OF PLANNING & DESIGN SERVICES
444 S 5TH STREET, LOUISVILLE KY 40202

LSCAPE Case #: N/A | REZONING CASE # 21-ZONE-0033

----- : NOT BEING PRESERVED / USED TOWARD TCCA CREDIT

Tree #	DBH*	Species (Example: Acer rubrum)	Condition (Excellent, Good, Fair, or Poor)
1	32"	SYCAMORE	EXCELLENT
2	33"	PIN OAK	GOOD
3	16"	SWEETGUM	GOOD
4	4"	RED MAPLE	GOOD
5	10"	SUGAR MAPLE	GOOD
6	26"	SWEETGUM	GOOD
7	2"	RED MAPLE	EXCELLENT
8	6"	RED MAPLE	GOOD
9	3"	HORNBEAM	GOOD
10	6"	HACKBERRY	GOOD
11	28"	PIN OAK	GOOD
12	12"	ELM	GOOD
13	10"	HACKBERRY	GOOD
14	6"	HACKBERRY	GOOD
15	12"	BEECH	GOOD
16	2"	HICKORY	GOOD
17	22"	HICKORY	GOOD
18	3"	BOX ELDER MAPLE	GOOD
19	13"	SILVER MAPLE	EXCELLENT
20	2"	BOX ELDER MAPLE	GOOD
21	7"	SILVER MAPLE	GOOD
22	6"	SILVER MAPLE	GOOD
23	2"	RED MAPLE	GOOD
24	6"	RED MAPLE	GOOD
25	5"	BEECH	GOOD
26	32"	SYCAMORE	GOOD

*Diameter Breast Height (DBH) : The diameter of the trunk of the tree measured at a point 4.5 feet above the ground line.

Prepared By: NATHAN WRIGHT, PLA

Title: LANDSCAPE ARCHITECT

Date: 9/14/2021

RECEIVED
SEP 20 2021
PLANNING &
DESIGN SERVICES

21 - ZONE - 0033



Tree Preservation Inventory

DEPARTMENT OF CODES & REGULATIONS
DIVISION OF PLANNING & DESIGN SERVICES
444 S 5TH STREET, LOUISVILLE KY 40202

Project Name: HELCK AVENUE REZONING

Address: 1230 & 1230 R HELCK AVENUE

LSCAPE Case #: N/A | REZONING CASE # 21-ZONE-0033

Tree #	DBH*	Species (Example: Acer rubrum)	Condition (Excellent, Good, Fair, or Poor)
27	20"	SILVER MAPLE	GOOD
28	18"	SWEETGUM	GOOD
29	18"	BLACK WALNUT	EXCELLENT
30	2"	SWAMP WHITE OAK	EXCELLENT
31	24"	SILVER MAPLE	GOOD
32	14"	RED OAK	GOOD
33	10"	BLACK WALNUT	GOOD
34	24"	SYCAMORE	GOOD
35	6"	BLACK WALNUT	EXCELLENT

RECEIVED
SEP 20 2021
PLANNING &
DESIGN SERVICES

*Diameter Breast Height (DBH) : The diameter of the trunk of the tree measured at a point 4.5 feet above the ground line.

Prepared By: NATHAN WRIGHT, PLA

Title: LANDSCAPE ARCHITECT

Date: 9/14/2021

21 - ZONE - 0033



North-East View

Sheet Index

New Residential Apartment Buildings For
Helck Ave. Apts.
 1230 & 1225 Helck Ave.
 Louisville KY 40213

RECEIVED
 SEP 20 2021
 PLANNING &
 DESIGN SERVICES

- A1.1 Cover Sheet
- A1.2 1st & 2nd Floors Overall
- A1.3 3rd Floor & Roof Plan Overall
- A2.1 1st Floor Dimensions
- A2.2 2nd Floor Dimensions
- A2.3 3rd Floor Dimensions
- A3.1 1st Floor Ceiling Plan
- A3.2 3rd Floor Ceiling Plan
- A4.1 Front & Rear Elevations
- A4.2 End Elevations & Sections
- A4.3 Building Sections
- A6.1 Unit Wall Sections
- A6.2 Patio Wall Sections
- A6.3 Breezeway Wall Sections
- A6.4 Mechanical Rooftop Details
- S1.1 1st Floor Foundation
- S1.2 2nd Floor Framing Plan
- S1.3 Roof Framing Plan



South-East View

New Residential Apartment Buildings For
Helck Ave. Apts.
 1230 & 1225 Helck Ave.
 Louisville KY 40213

ECdesign
 ARCHITECTS
 1000 W. MARKET ST. #200
 LOUISVILLE, KY 40203

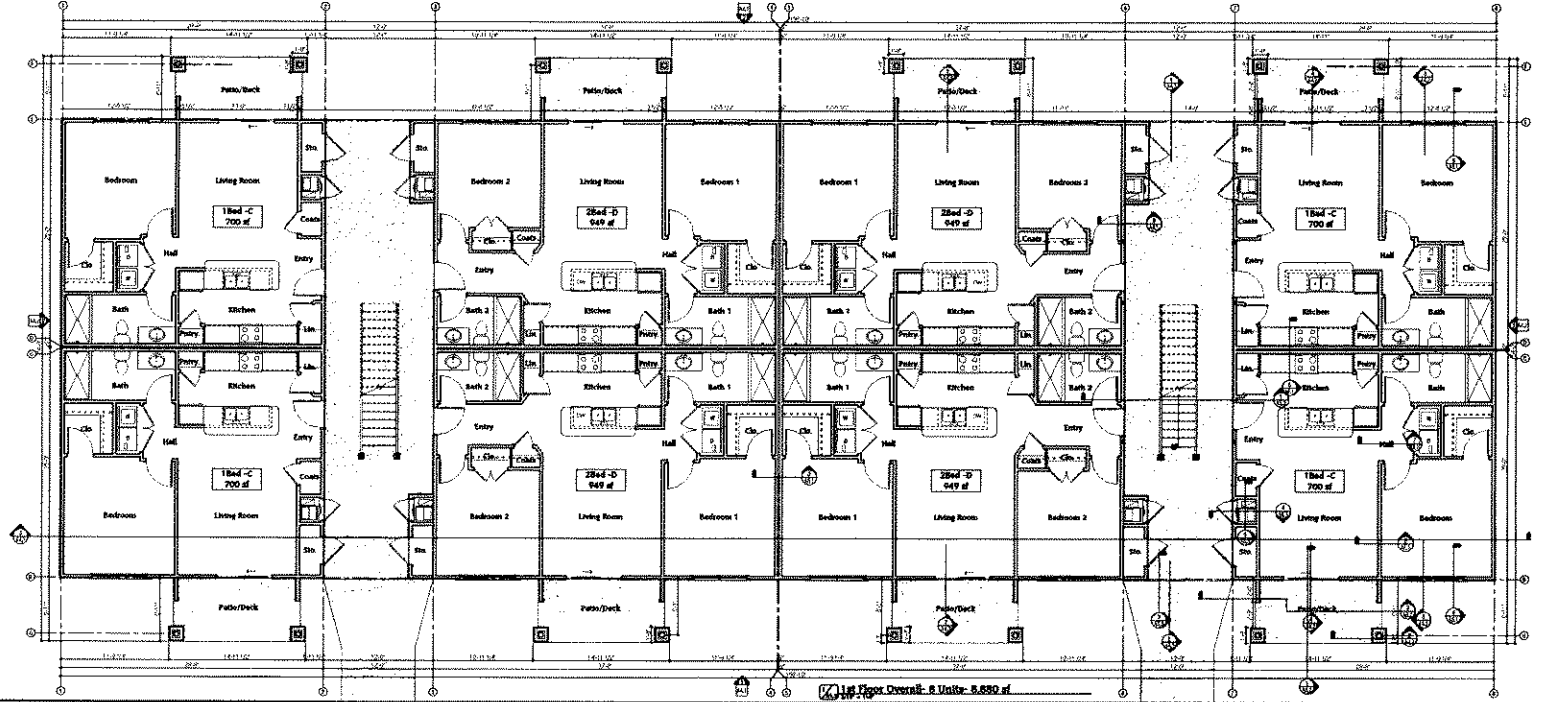
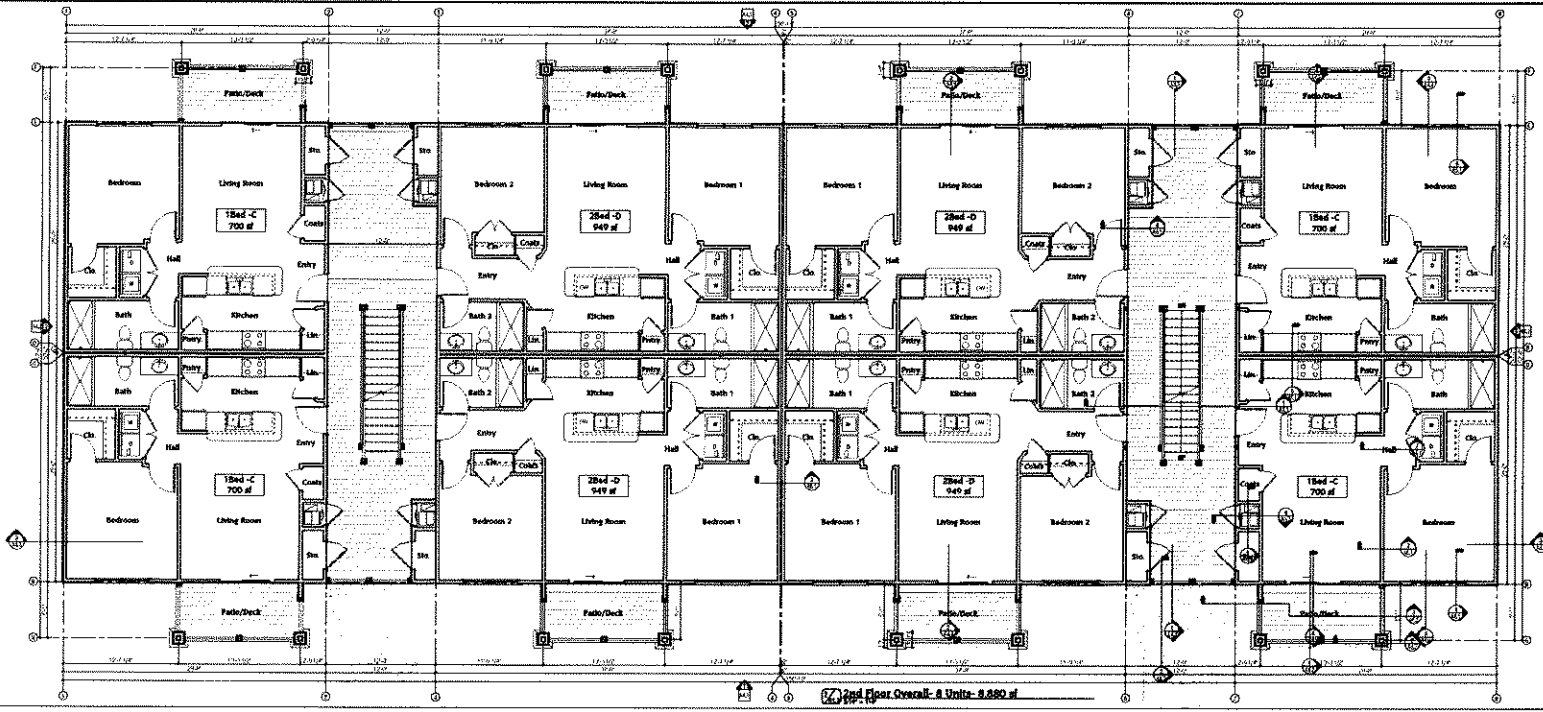
Cover Sheet
 9/21/2021
 1230 & 1225 Helck Ave.
 Louisville, KY 40213
 © 2021 EC Design

21 - ZONE - 0033

RECEIVED

SEP 20 2011

PLANNING & DESIGN SERVICES



21 - ZONE - 0033

New Residential Apartment Buildings For
Helck Ave. Apts.
 1230 & 1235 Helck Ave.
 Louisville KY 40213



1st & 2nd Floor
 9/1/2011
 2011
 0300 sq Design

RECEIVED

SEP 20 2021

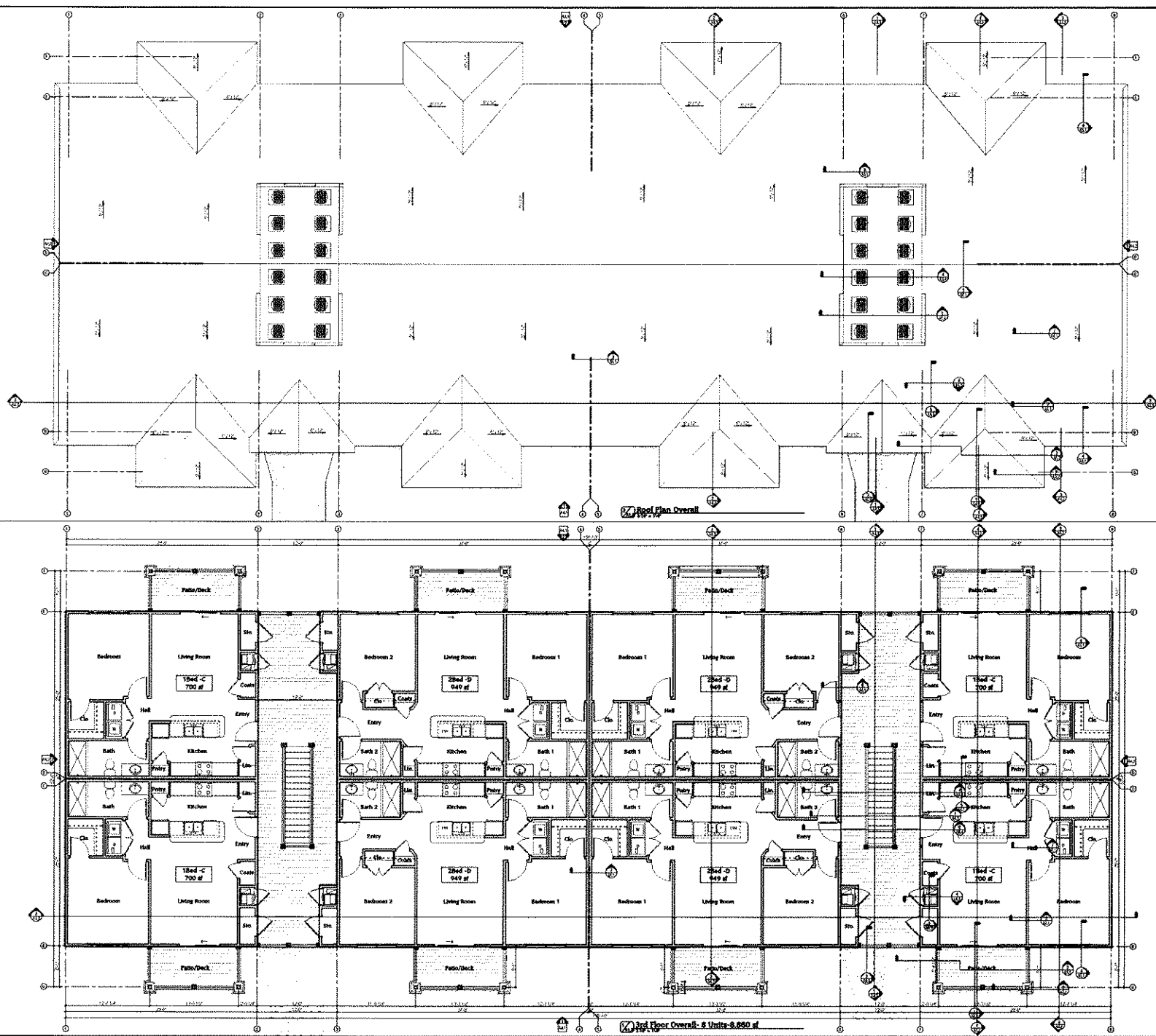
PLANNING &
DESIGN SERVICES

New Residential Apartment Buildings For
Helck Ave. Apts.
1230 & 1235 Helck Ave.
Louisville KY 40213



3rd Floor & Roof
Plan Overall
2/1/2021
201
201
© 2020 ac Design

A1.3



3rd Floor Overall

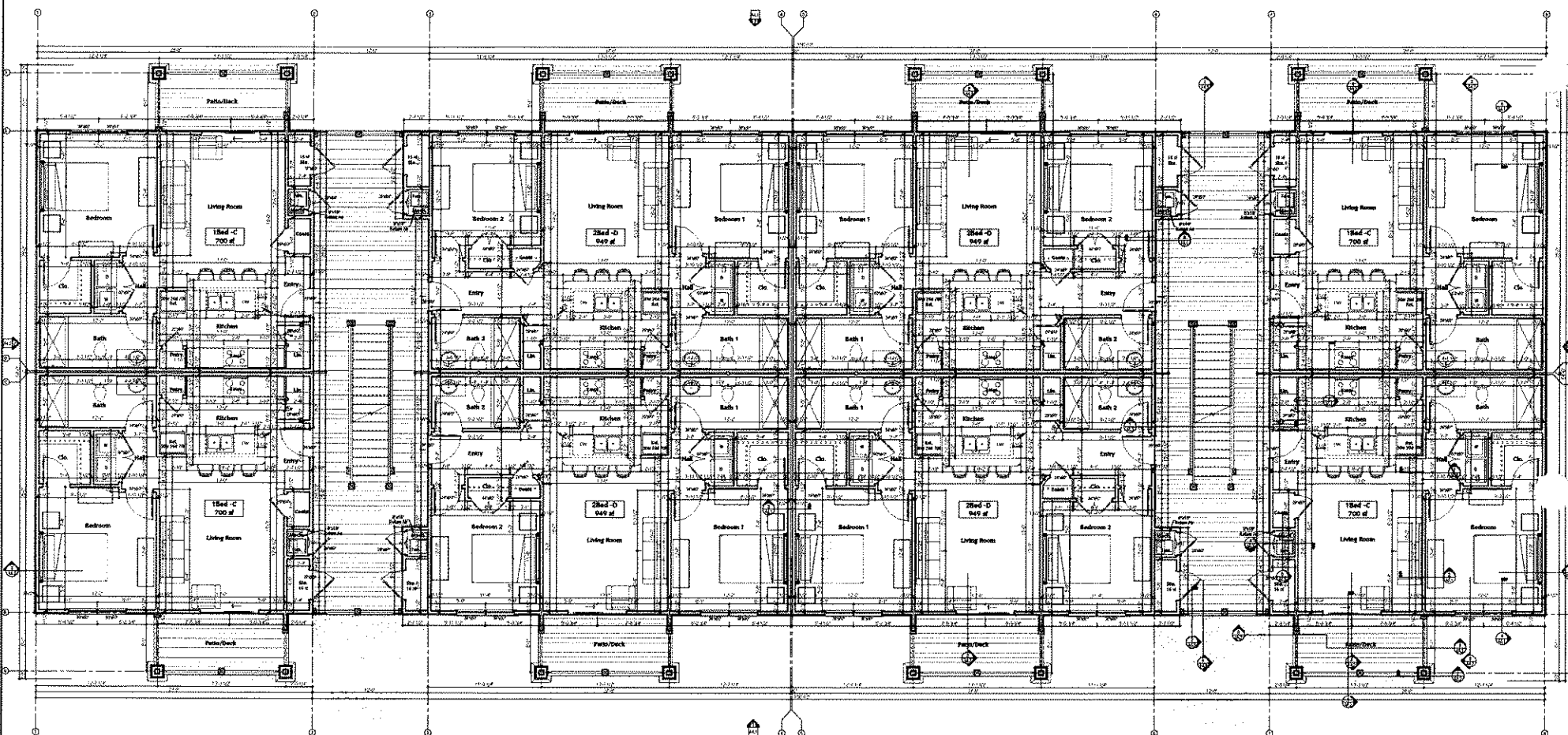
3rd Floor Overall - 8 Units-5,850 sf

21 - ZONE - 0033

RECEIVED

SEP 20 2021

PLANNING &
DESIGN SERVICES



1/2" = 1'-0" Floor Dimensions

27 - ZONE 10133

New Residential Apartment Buildings For
Heck Ave. Apts.
1230 & 1225 Heck Ave.
Louisville KY 40213

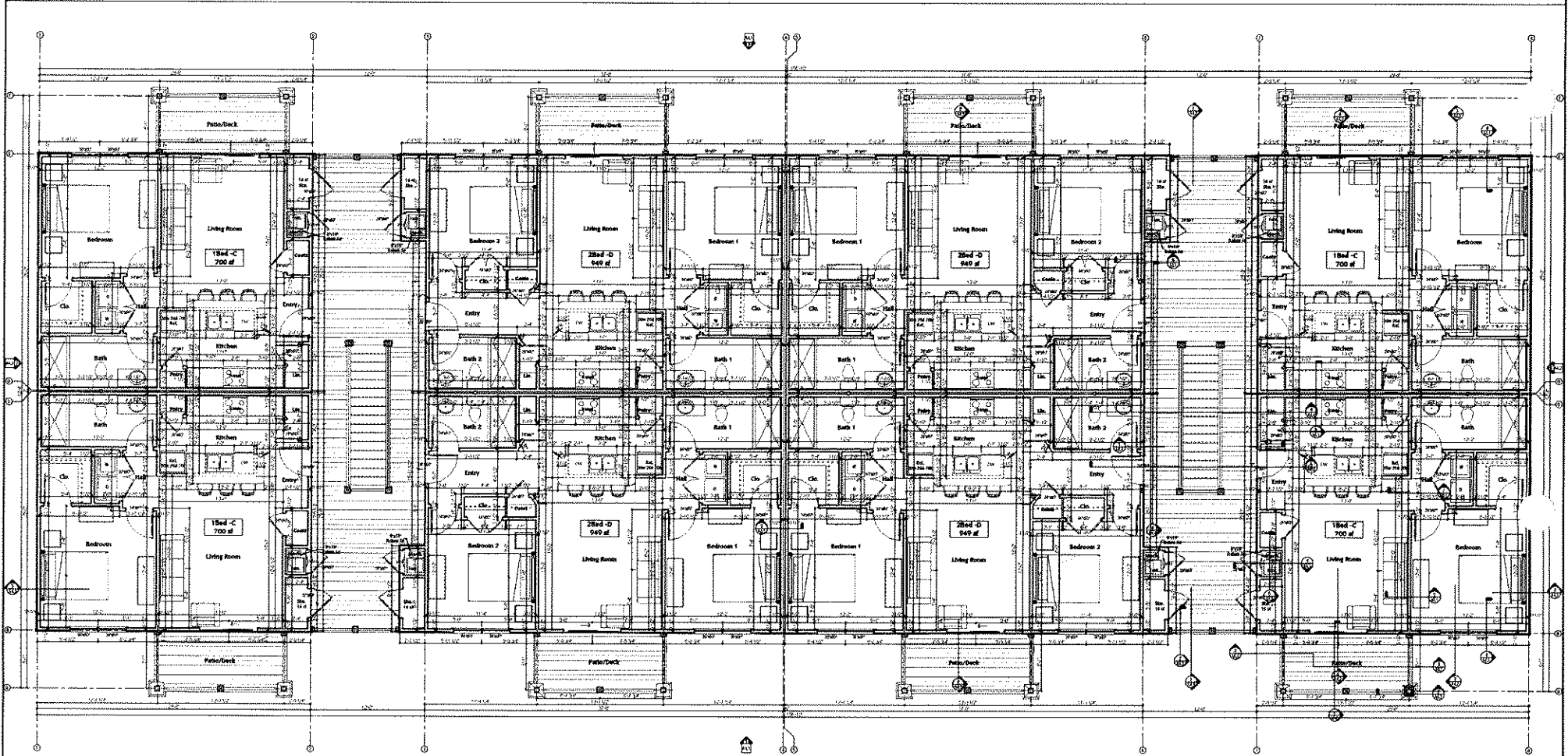
ECdesign
ARCHITECTURE
8805 902-743-8300
Louisville, KY 40249

2nd Floor
09/17/2021
A2.2

RECEIVED

SEP 20 2021

PLANNING &
DESIGN SERVICES



3rd Floor Dimensions

21 - 70'0"

New Residential Apartment Buildings For
Helck Ave. Apts.
1230 & 1225 Helck Ave.
Louisville KY 40213

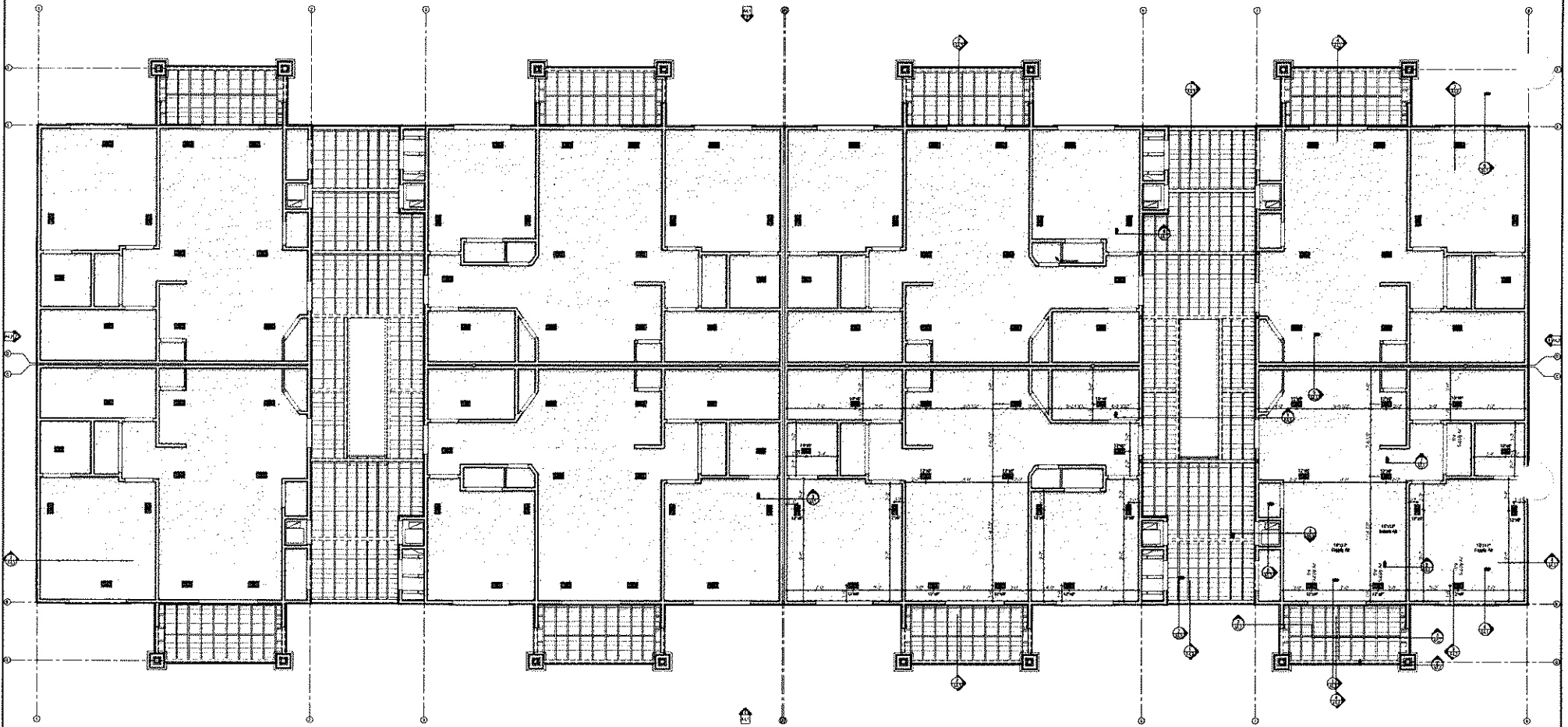
ECdesign
ARCHITECTURAL
202-263-8900
8505 Hornsberger Ct
Louisville, KY 40242

Plot Area
Date
Scale
Sheet
A2.3

RECEIVED

SEP 20 2021

PLANNING &
DESIGN SERVICES



1st Floor Reflected Ceiling Plan

21 - ZONE - 0033

New Residential Apartment Buildings For
Helck Ave. Apts.
1230 & 1225 Helck Ave.
Louisville KY 40213



1st Floor Ceiling
DATE: 09/20/21
SCALE: 1/8" = 1'-0"
SHEET: 0033
A3.1



North Elevation



South Elevation

RECEIVED

21 - ZONE : -0033

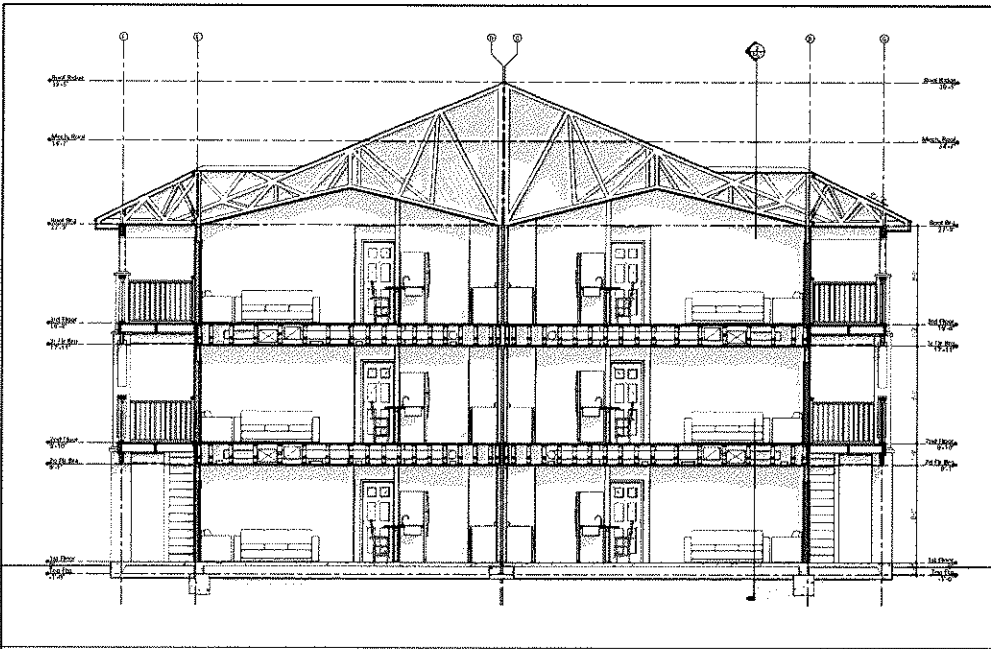
SEP 20 2021

PLANNING &
DESIGN SERVICES

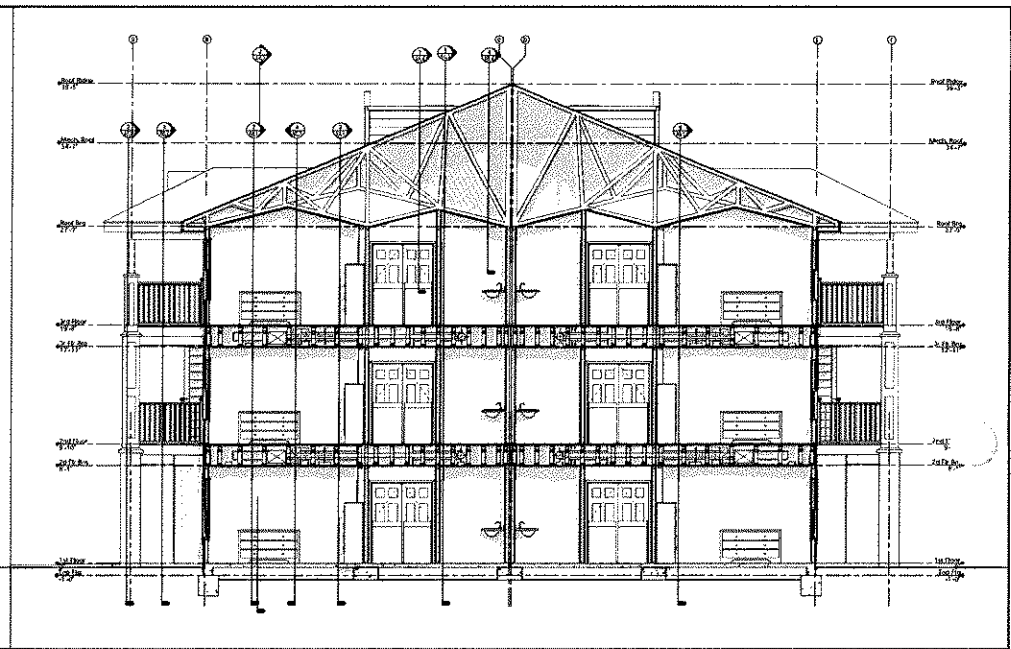
New Residential Apartment Buildings For
Helck Ave. Apts.
1230 & 1225 Helck Ave.
Louisville KY 40213

ECdesign
ARCHITECTURE
8401 Mariposa Dr.
Louisville, KY 40248

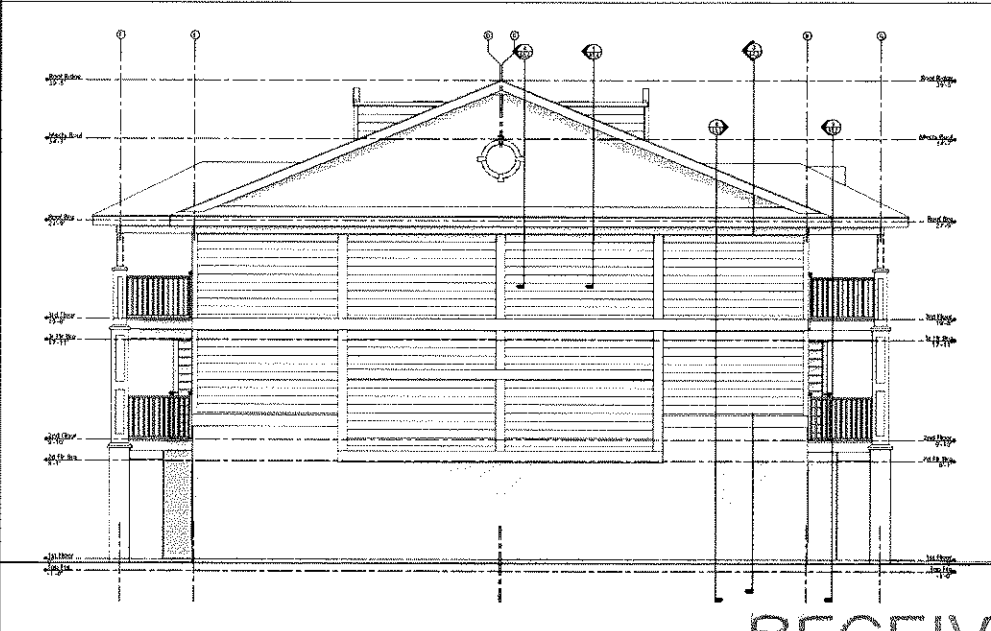
Sheet & Date:
01/20/21
DATE: 09/20/21
SCALE: 1/8" = 1'-0"
A4.1



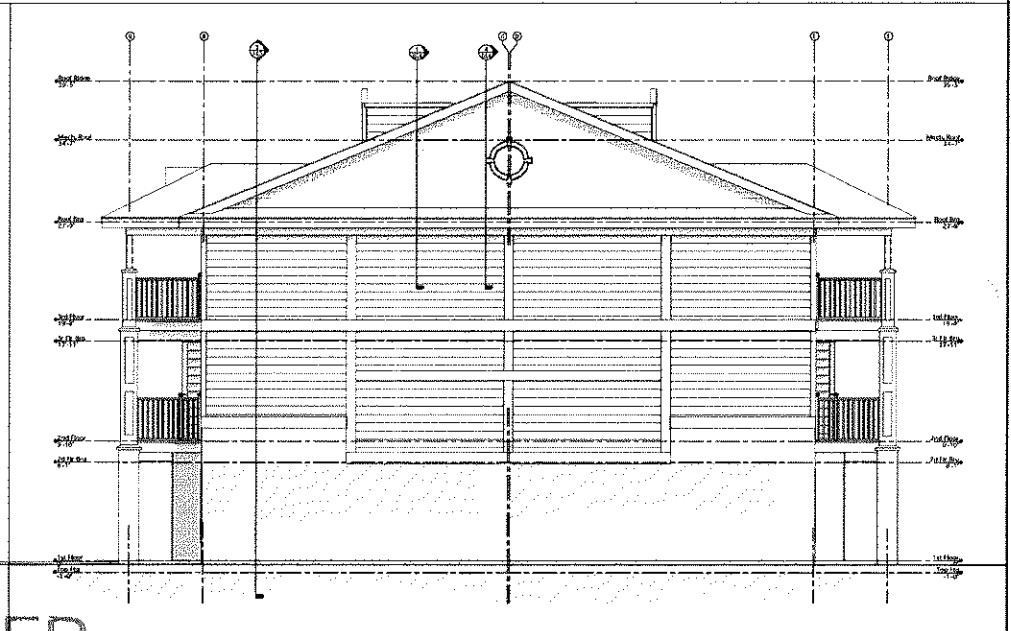
Front to Back Section at 1-Bed Living Rooms



Front to Back Section at 1-Bed Bedrooms



West Elevation



East Elevation

RECEIVED

21 - ZONE - 0033

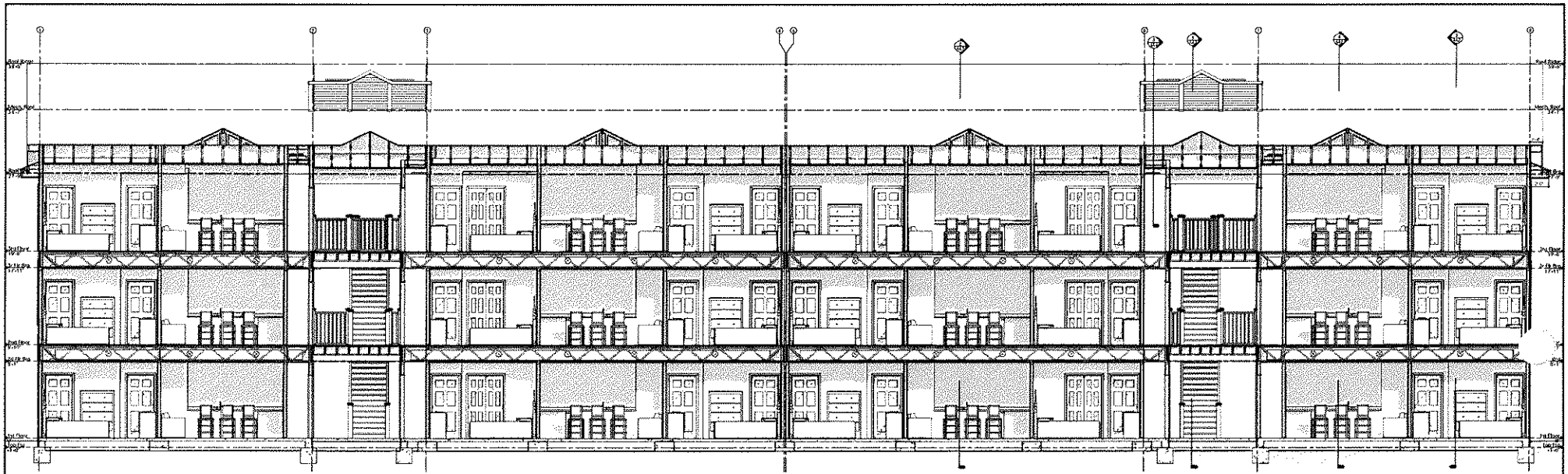
SEP 20 2021

PLANNING &
DESIGN SERVICES

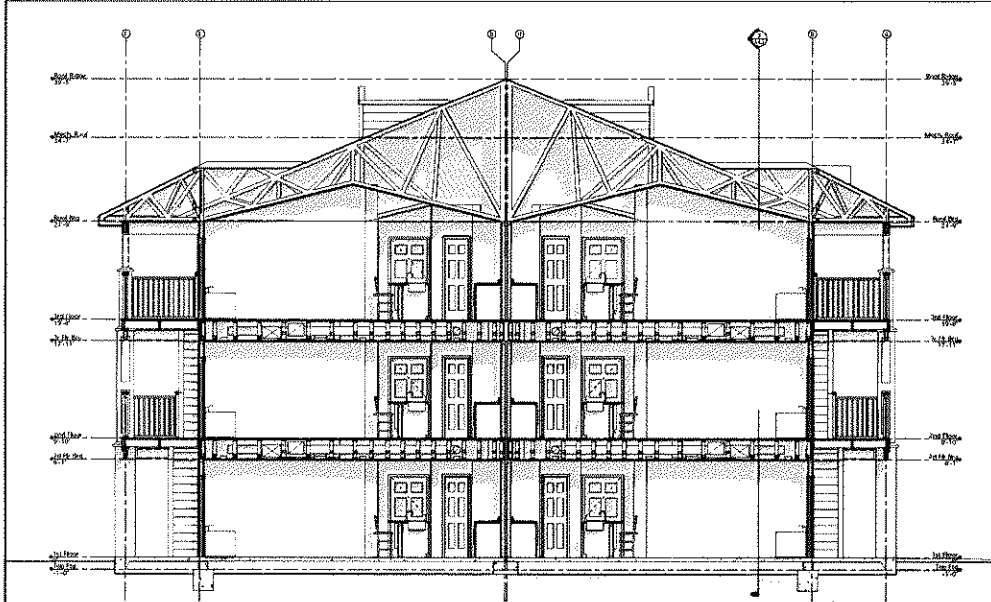
New Residential Apartment Buildings For
Heick Ave. Apts.
1230 & 1225 Heick Ave.
Louisville KY 40213

ECdesign
ARCHITECTS
8801 Newland Ave.
Louisville, KY 40242

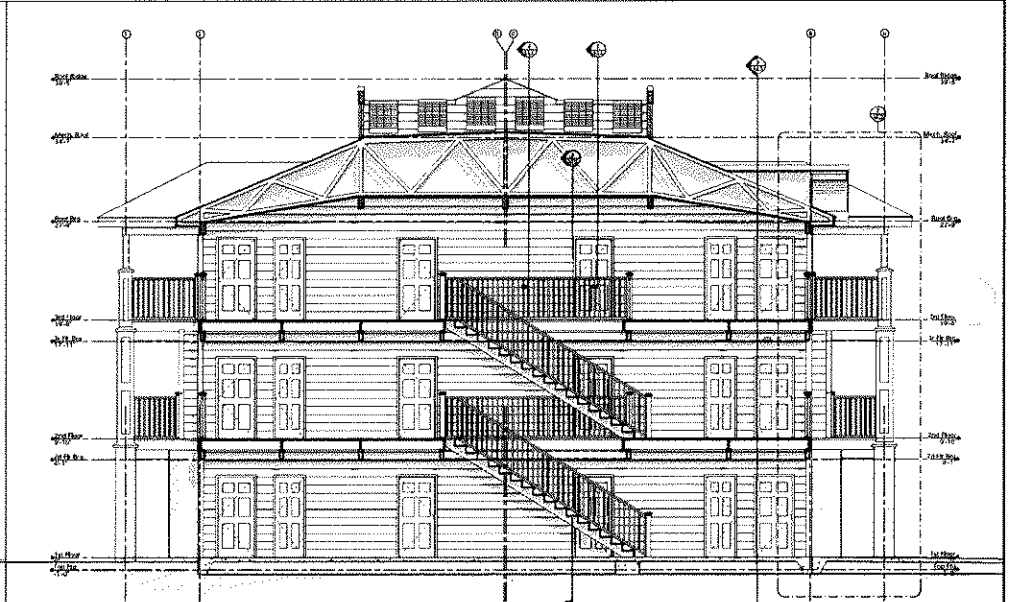
End Elevations &
Sections
01/20/21
1/4"
1/8"
1/2" = 1'-0"
1/4" = 3'-0"
1/8" = 6'-0"
A4.2



Side to Side Building Section



Building Section at 2-Redem Unit



Front to Back Section at Breezeway 2

RECEIVED

SEP 20 2021

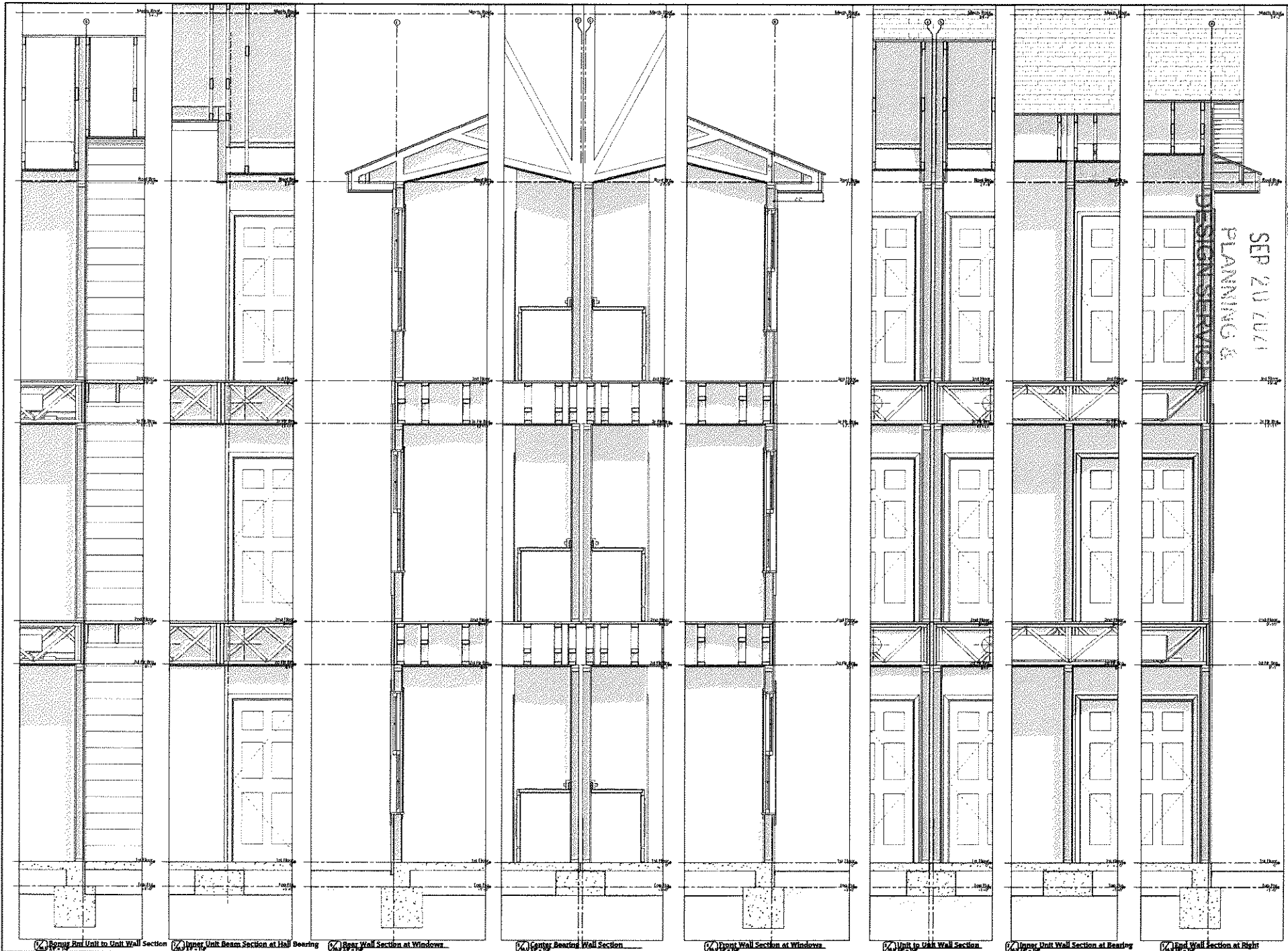
PLANNING &
DESIGN SERVICES

New Residential Apartment Buildings For
Helck Ave. Apts.
1230 & 1225 Helck Ave.
Louisville KY 40213

ECdesign
ARCHITECTURE
8805 Hermitage Dr
Louisville, KY 40242

Building Sections
SHEETS
DATE
SCALE
DRAWN BY
CHECKED BY
A4.3

21 - ZONE - 0033



RECEIVED
 SEP 20 2011
 PLANNING &
 DESIGN SERVICES

New Residential Apartment Buildings For
 Heick Ave. Apts.
 230 & 1225 Heick Ave.
 Louisville KY 40213

ECdesign
 ARCHITECTS
 1000 W. MARKET ST. SUITE 200
 LOUISVILLE, KY 40203
 (502) 582-1111

Unit Wall Sections
 9/17/2011
 2011
 ECN
 © 2009 as Design
 A6.1

21 - ZONE - 0033

RECEIVED

SEP 20 2011

PLANNING &
DESIGN SERVICES

New Residential Apartment Buildings For
Leick Ave. Apts.
1230 & 1235 Huick Ave.
Louisville KY 40215

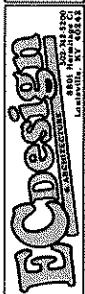
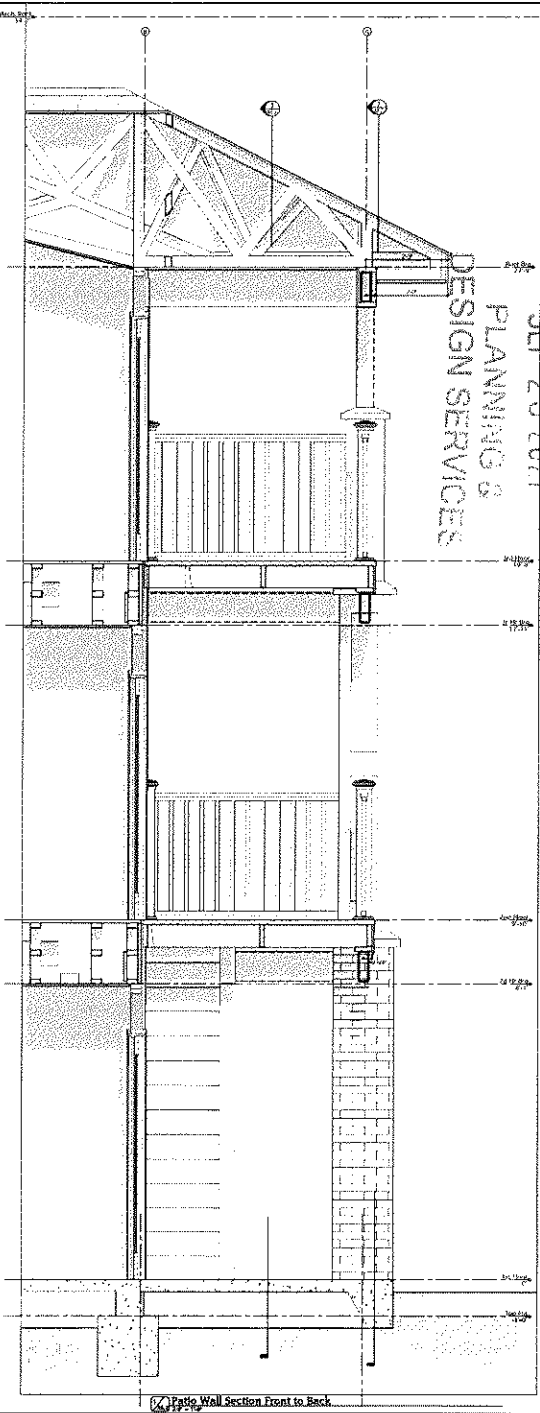
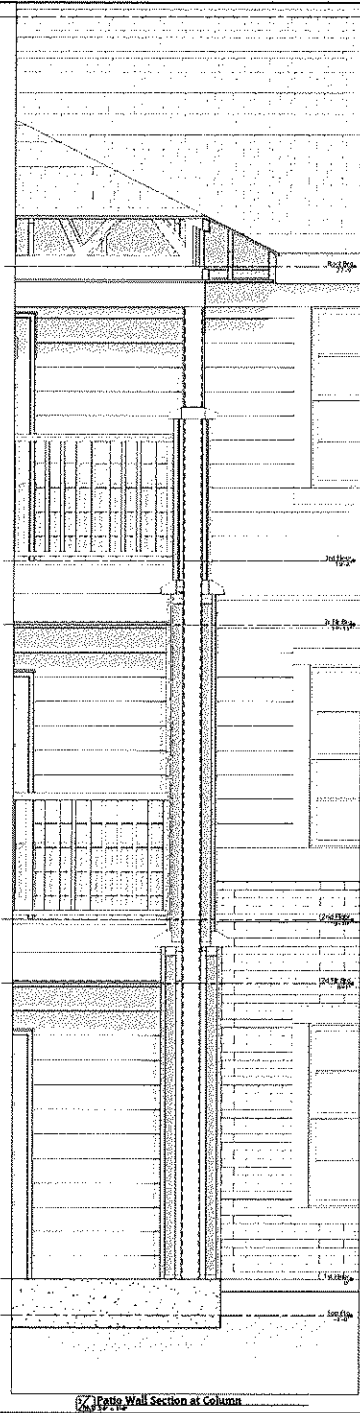


Plate Wall Section
217221
2015
EJC
© 2015 ec design

A6.2



Patio Wall Section Front to Back



Patio Wall Section at Column



Patio Wall Section Side to Side

21 - ZONE

33

RECEIVED

SEP 20 2011

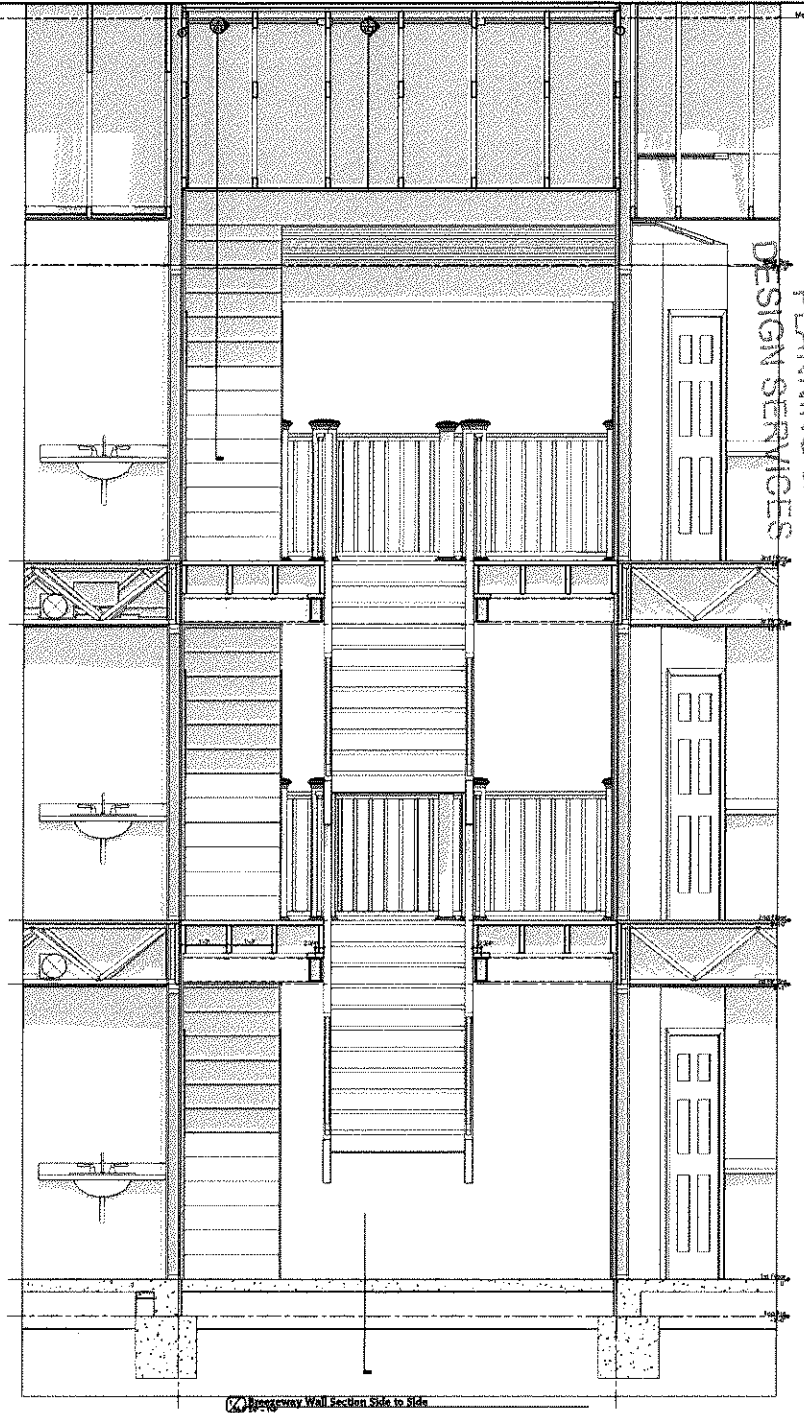
PLANNING &
DESIGN SERVICES

New Residential Apartment Buildings For
Heck Ave. Apts.
230 & 1225 Heck Ave.
Louisville KY 40213

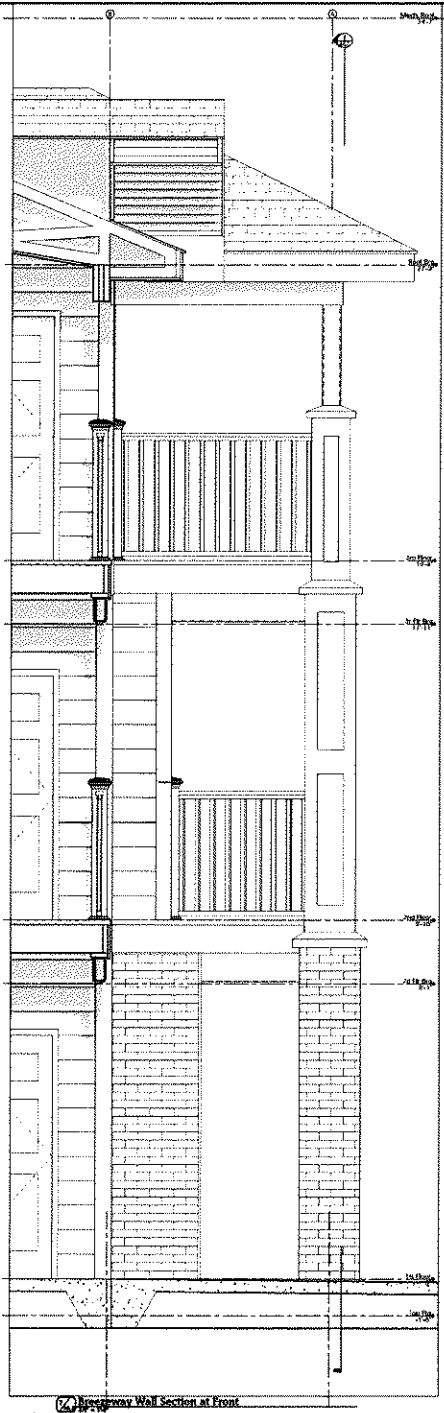
ECdesign
ARCHITECTS
1000 MARKET ST. #200
LOUISVILLE, KY 40202

Discipline: Arch
Section:
2/11/2011
2011
E.C.
© 2011 ec design

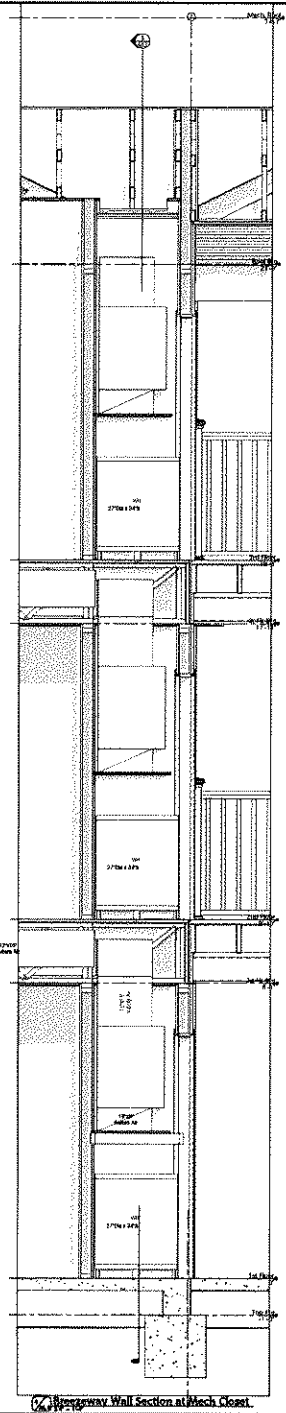
A6.3



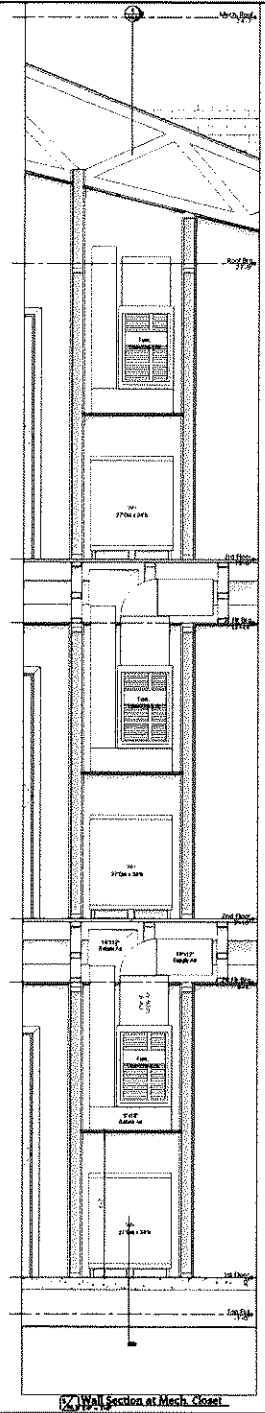
Wallsrvay Wall Section Side to Side



Wallsrvay Wall Section at Front

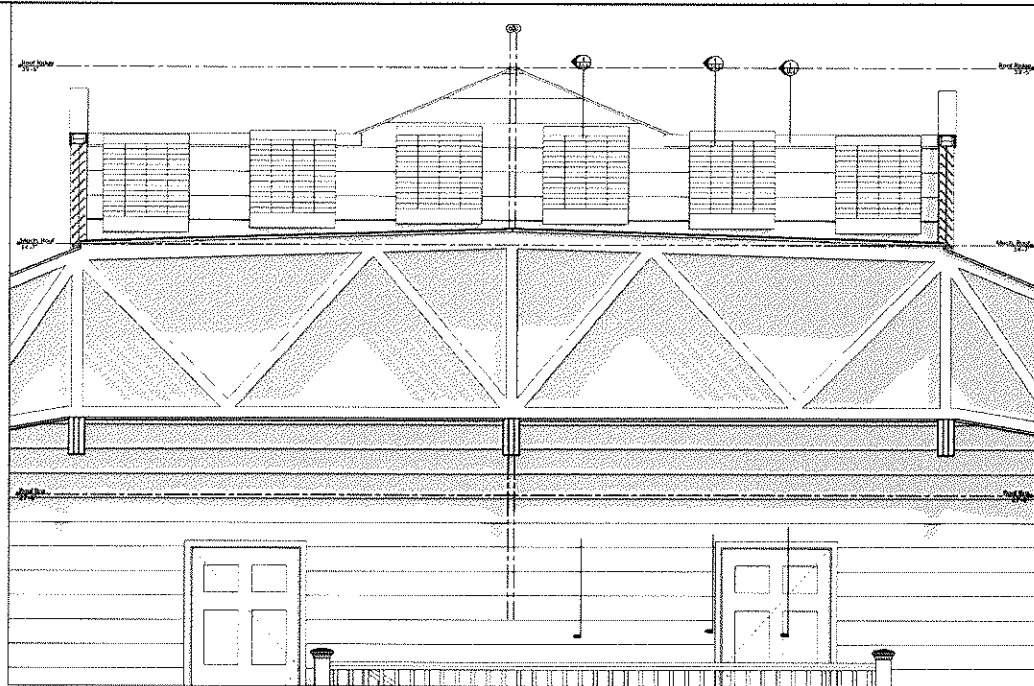


Wallsrvay Wall Section at Mech. Closet

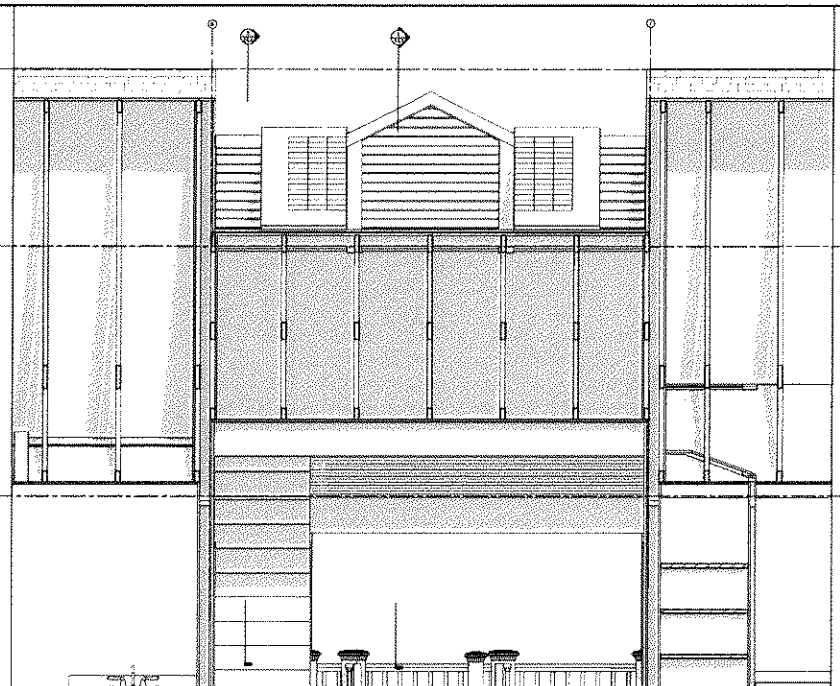


Wall Section at Mech. Closet

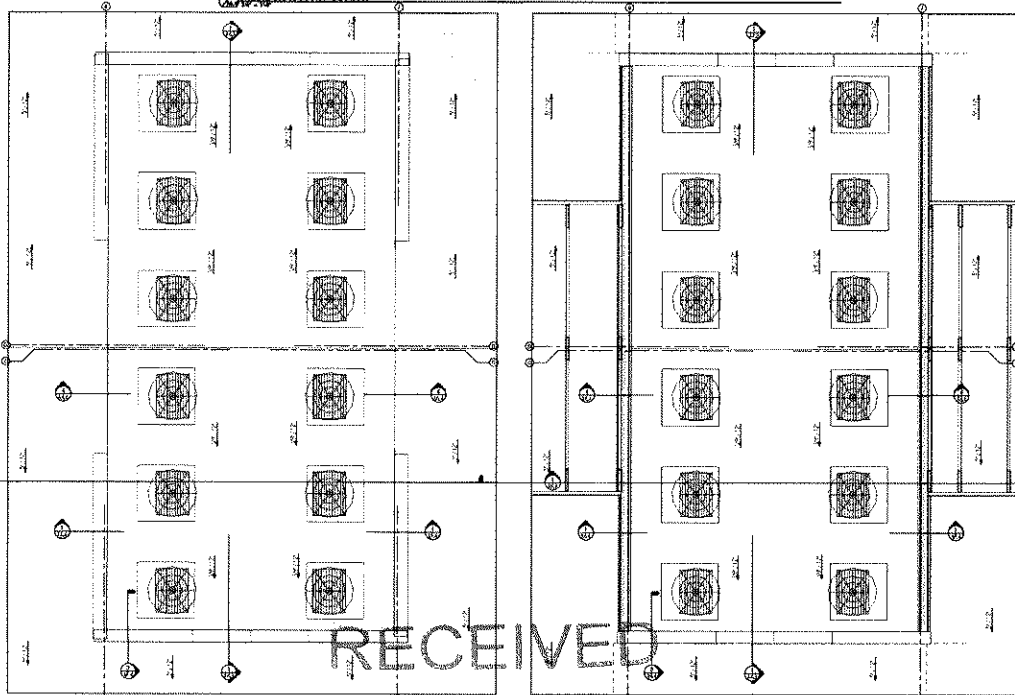
21 - ZONE - 0033



Mech. Roof Front Section

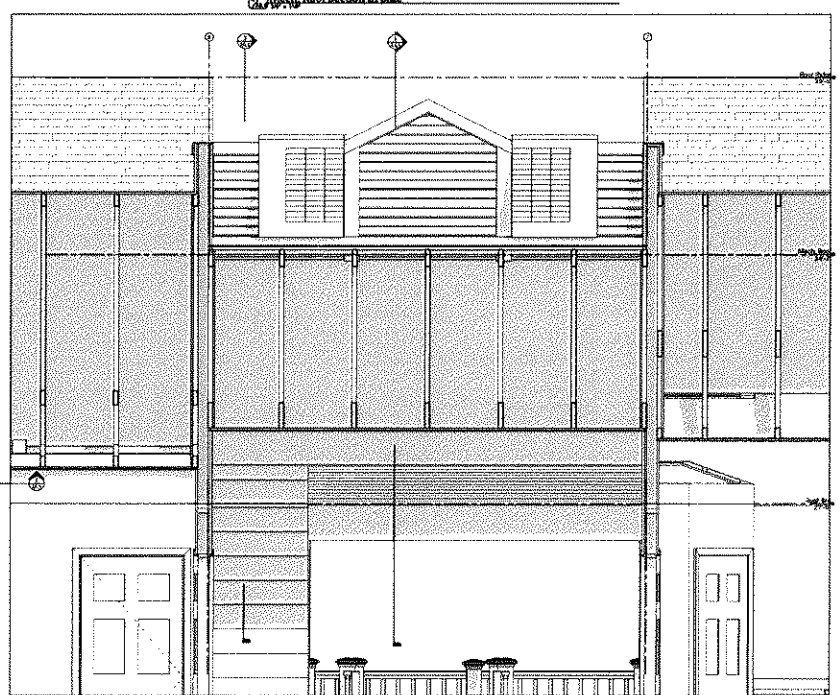


Mech. Roof Section at Side



Mech. Roofplan Mid Cap Plan

Mech. Roofplan Louver Plan



Mech. Roofplan Side to Side Section

RECEIVED

SEP 20 2011

PLANNING &
DESIGN SERVICES

New Residential Apartment Buildings For
Chick Ave. Apts.
1230 & 1225 Chick Ave.
Louisville KY 40213

ECdesign
MECHANICAL ENGINEERING
ARCHITECTURE
INTERIOR DESIGN
LANDSCAPE ARCHITECTURE
KANSAS CITY, MO

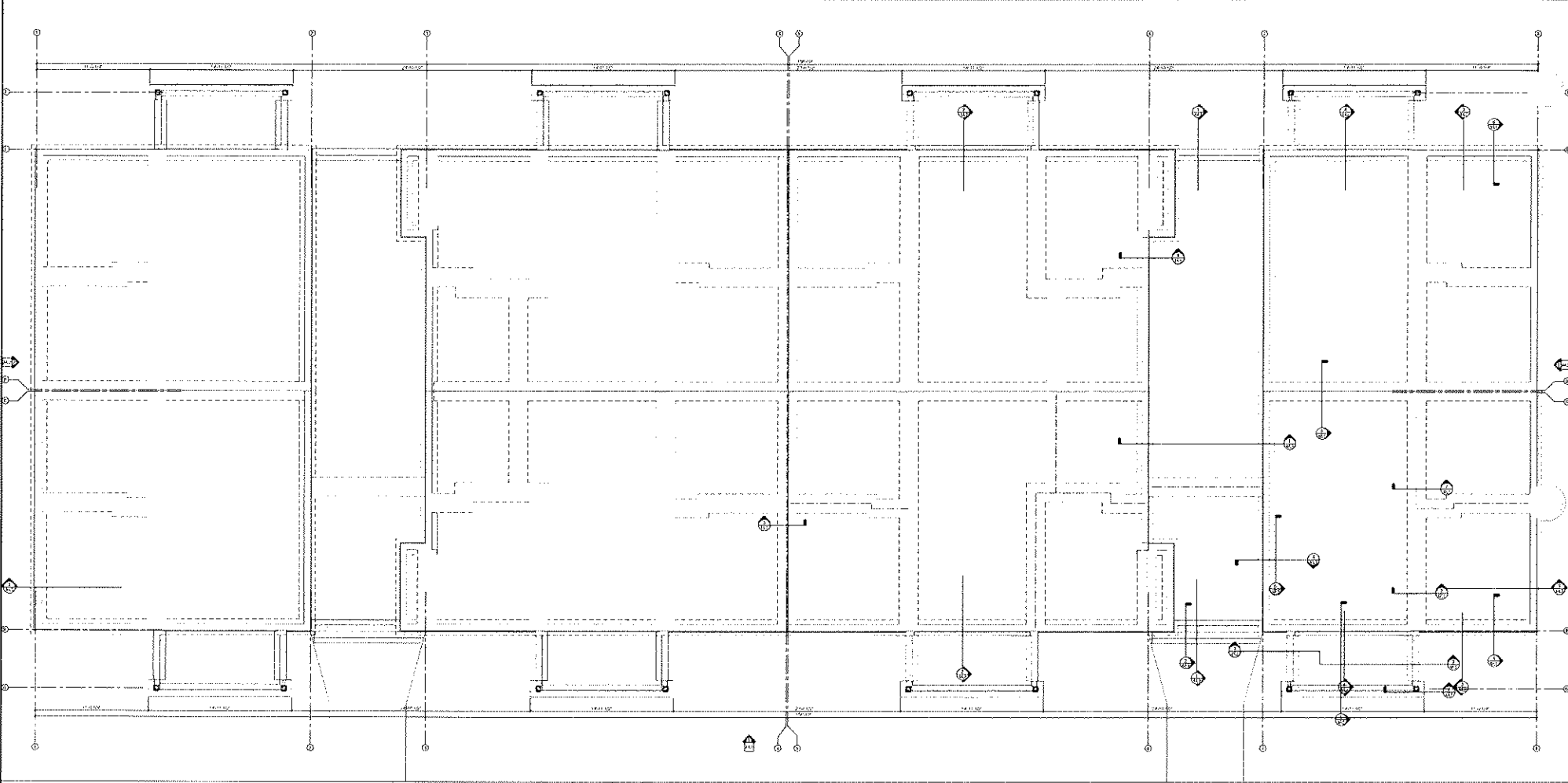
Mechanical Roofplan
Date: 9/11/2011
Time: 10:00 AM
User: JLD
Plot: 100%
Scale: 1/8" = 1'-0"

A6.4

RECEIVED

SEP 20 2021

PLANNING &
DESIGN SERVICES



1st Floor Foundation Plan

21 - ZONE - 0033

New Residential Apartment Buildings For
Heck Ave. Apts.
1230 & 1225 Heck Ave.
Louisville KY 40213

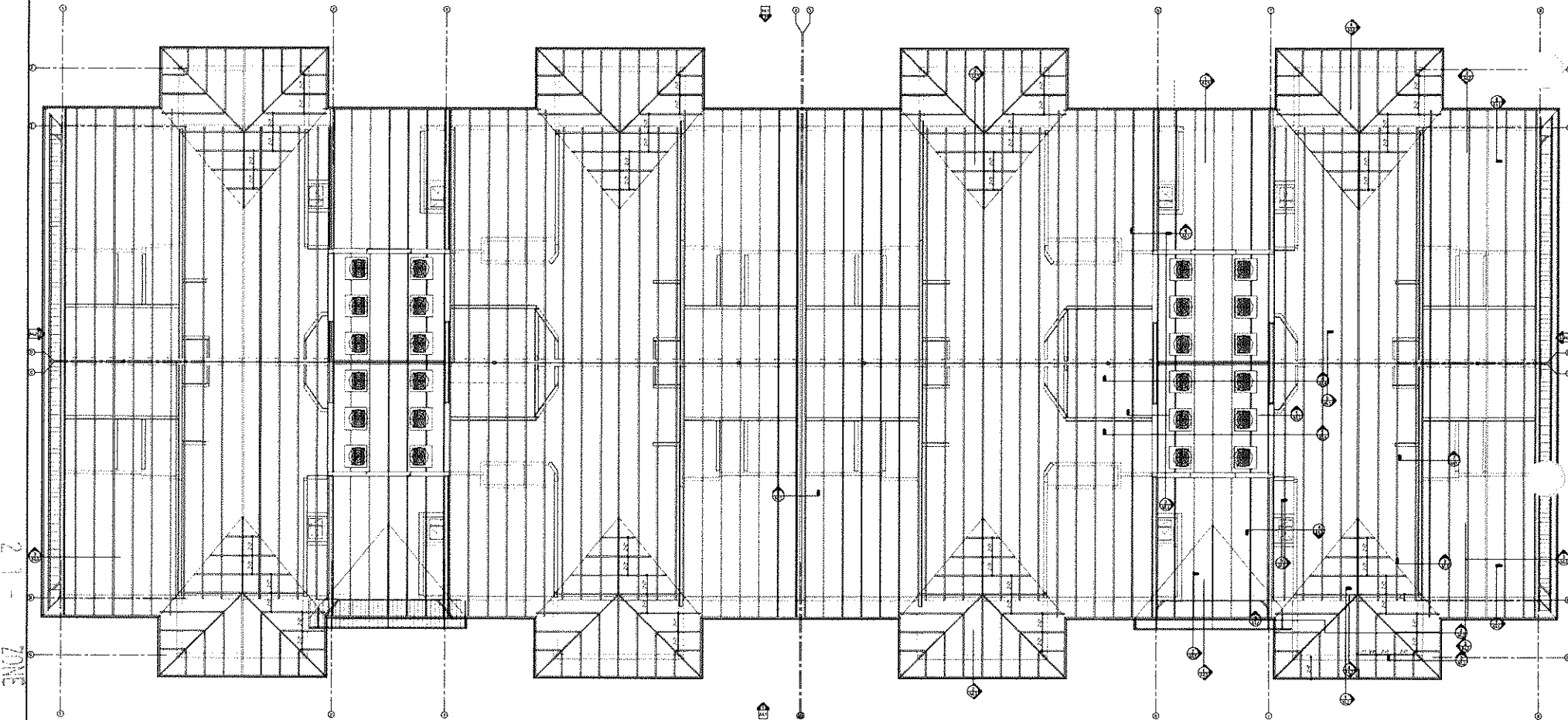
ECdesign
ARCHITECTURE
202 West 82nd
8303 Harrogate Ct
Louisville, KY 40248

1st Floor	Foundation
DATE	09/20/21
BY	EC
SCALE	1/8" = 1'-0"
NO.	S1.1

RECEIVED

SEP 20 2021

PLANNING &
DESIGN SERVICES



21 -
ZONE

-0033

Roof Framing Plan

New Residential Apartment Buildings For
Helck Ave. Apts.
1230 & 1225 Helck Ave.
Louisville KY 40213



Rev	0	21/7/2021	21/7/2021
Rev	1		
Rev	2		
Rev	3		
Rev	4		
Rev	5		
Rev	6		
Rev	7		
Rev	8		
Rev	9		
Rev	10		
Rev	11		
Rev	12		
Rev	13		
Rev	14		
Rev	15		
Rev	16		
Rev	17		
Rev	18		
Rev	19		
Rev	20		
Rev	21		
Rev	22		
Rev	23		
Rev	24		
Rev	25		
Rev	26		
Rev	27		
Rev	28		
Rev	29		
Rev	30		
Rev	31		
Rev	32		
Rev	33		
Rev	34		
Rev	35		
Rev	36		
Rev	37		
Rev	38		
Rev	39		
Rev	40		
Rev	41		
Rev	42		
Rev	43		
Rev	44		
Rev	45		
Rev	46		
Rev	47		
Rev	48		
Rev	49		
Rev	50		
Rev	51		
Rev	52		
Rev	53		
Rev	54		
Rev	55		
Rev	56		
Rev	57		
Rev	58		
Rev	59		
Rev	60		
Rev	61		
Rev	62		
Rev	63		
Rev	64		
Rev	65		
Rev	66		
Rev	67		
Rev	68		
Rev	69		
Rev	70		
Rev	71		
Rev	72		
Rev	73		
Rev	74		
Rev	75		
Rev	76		
Rev	77		
Rev	78		
Rev	79		
Rev	80		
Rev	81		
Rev	82		
Rev	83		
Rev	84		
Rev	85		
Rev	86		
Rev	87		
Rev	88		
Rev	89		
Rev	90		
Rev	91		
Rev	92		
Rev	93		
Rev	94		
Rev	95		
Rev	96		
Rev	97		
Rev	98		
Rev	99		
Rev	100		

S1.3

RECEIVED

SEP 20 2021

PLANNING &
DESIGN SERVICES

View From Northeast



View From Southwest



21 - ZONE - 0033



21 - ZONE

00003

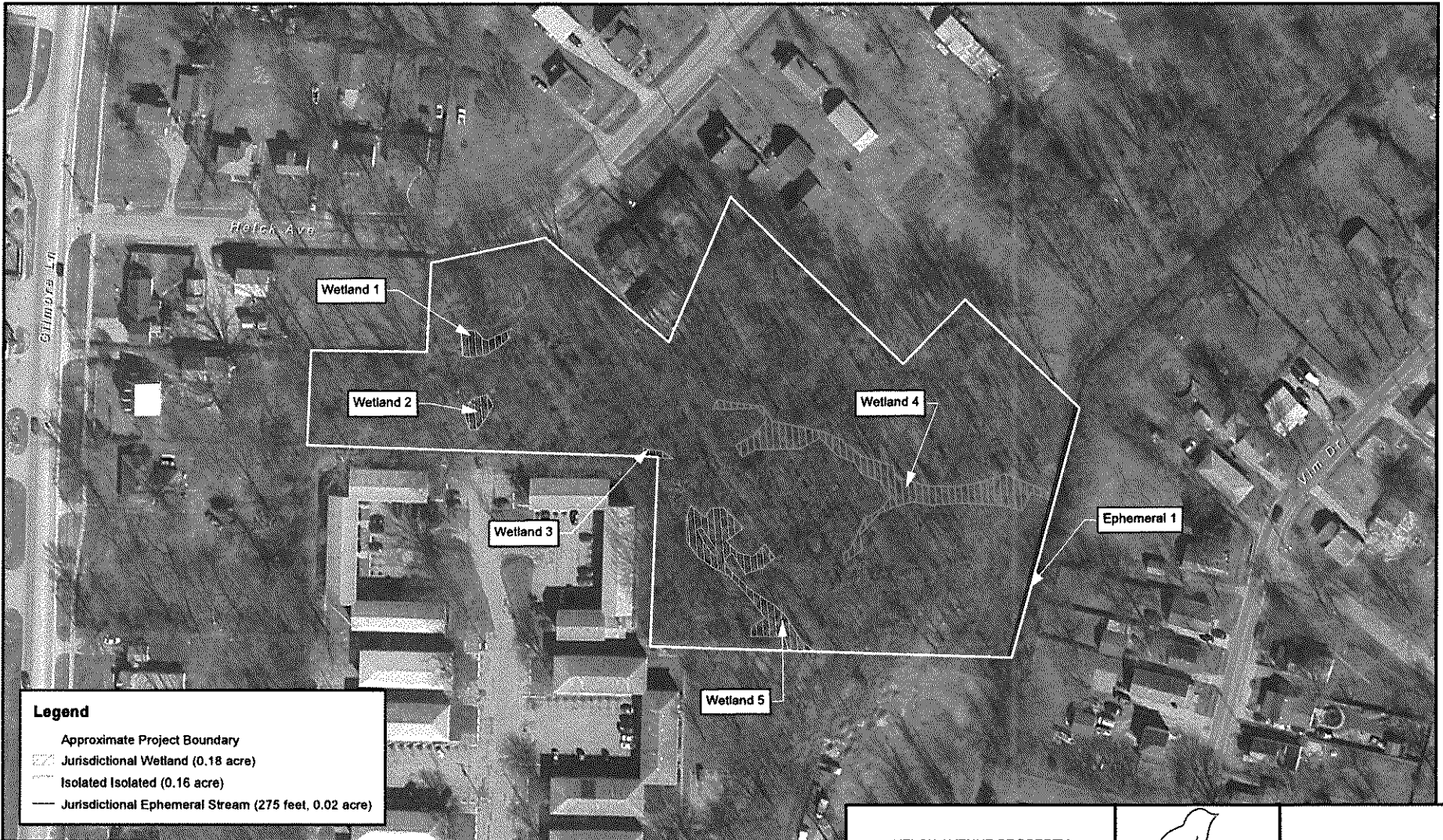


MINDEL SCOTT

RECEIVED HELCK AVENUE #2467
Louisville, Kentucky

SEP 20 2021
PLANNING &
DESIGN SERVICES

Source: Esri and the GIS User Community (2019).



Legend

- Approximate Project Boundary
- Jurisdictional Wetland (0.18 acre)
- Isolated Isolated (0.16 acre)
- Jurisdictional Ephemeral Stream (275 feet, 0.02 acre)



NOTE: JURISDICTIONAL WATER/WETLAND BOUNDARIES WERE DELINEATED AND SURVEYED BY REDWING WETLAND SCIENTISTS ON JANUARY 17, 2020. THESE BOUNDARIES HAVE NOT BEEN VERIFIED BY THE U.S. ARMY CORPS OF ENGINEERS. USE OF THIS MAP IS FOR PRELIMINARY PLANNING PURPOSES ONLY.



HELCK AVENUE PROPERTY
JEFFERSON COUNTY, KENTUCKY



WATER/WETLAND
LOCATION MAP

REVISED DATE: 01-24-20 | DRAWN BY: ZTT/BJD

FIGURE X
SHEET of

RECEIVED

SEP 20 2021

PLANNING &
DESIGN SERVICES

P:\2020 Projects\20-001 - Helck Avenue Property\Figures\Water Wetland Map.mxd, 01-24-2020, jby
 21 - ZONE
 - 0033

Rear Elevation



ECdesign
ARCHITECTURE & INTERIOR DESIGN
1200 W. MARKET ST. SUITE 200
LOUISVILLE, KY 40203
TEL: 502-261-1111

New Residential Apartment Buildings For
Helck Ave. Apts.
1230 & 1225 Helck Ave.
Louisville KY 40213

Front Elevation

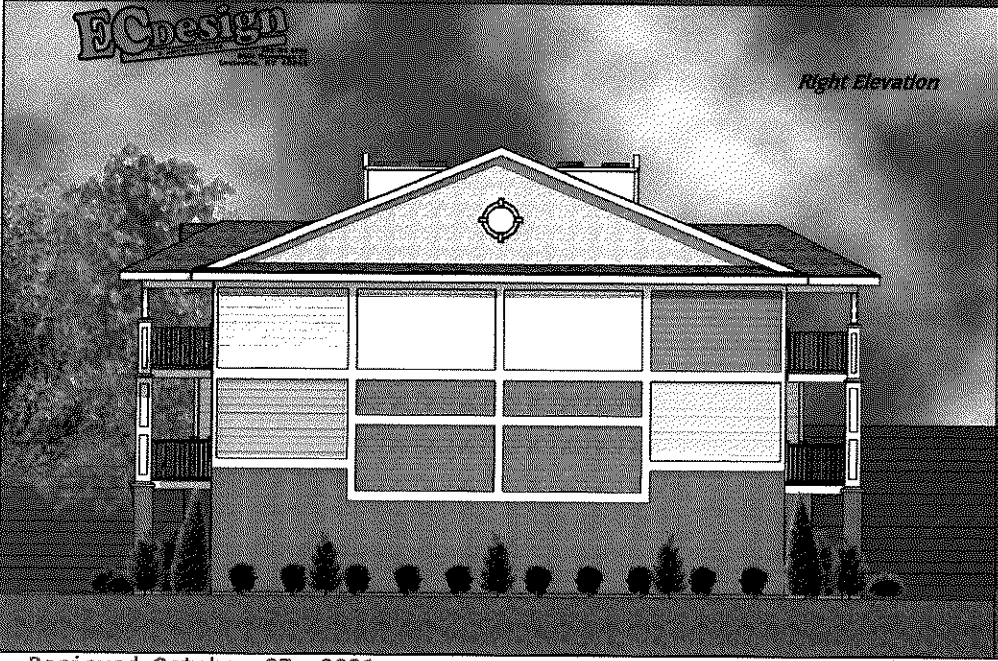




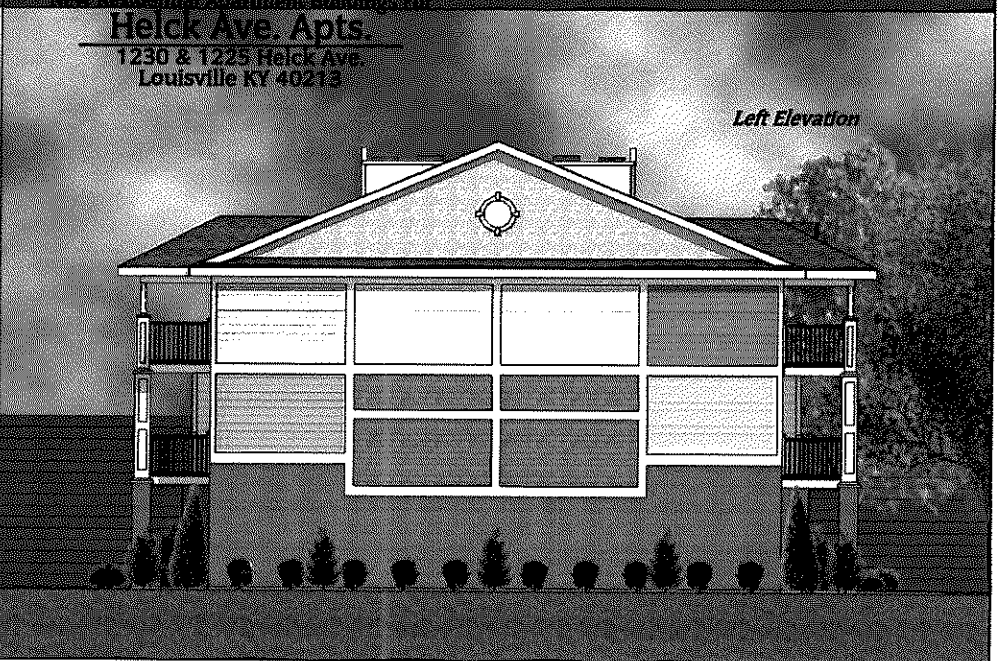
Right End View



Left End View



Right Elevation



Left Elevation

ECdesign
ARCHITECTURAL DESIGN
COMMERCIAL DESIGN

New Residential Apartment Buildings for

Helck Ave. Apts.
1230 & 1225 Helck Ave.
Louisville KY 40213



View of Rear Right



New Residential Apartment Buildings For
Helck Ave. Apts.
1230 & 1225 Helck Ave.
Louisville KY 40213



View of Front Left

