

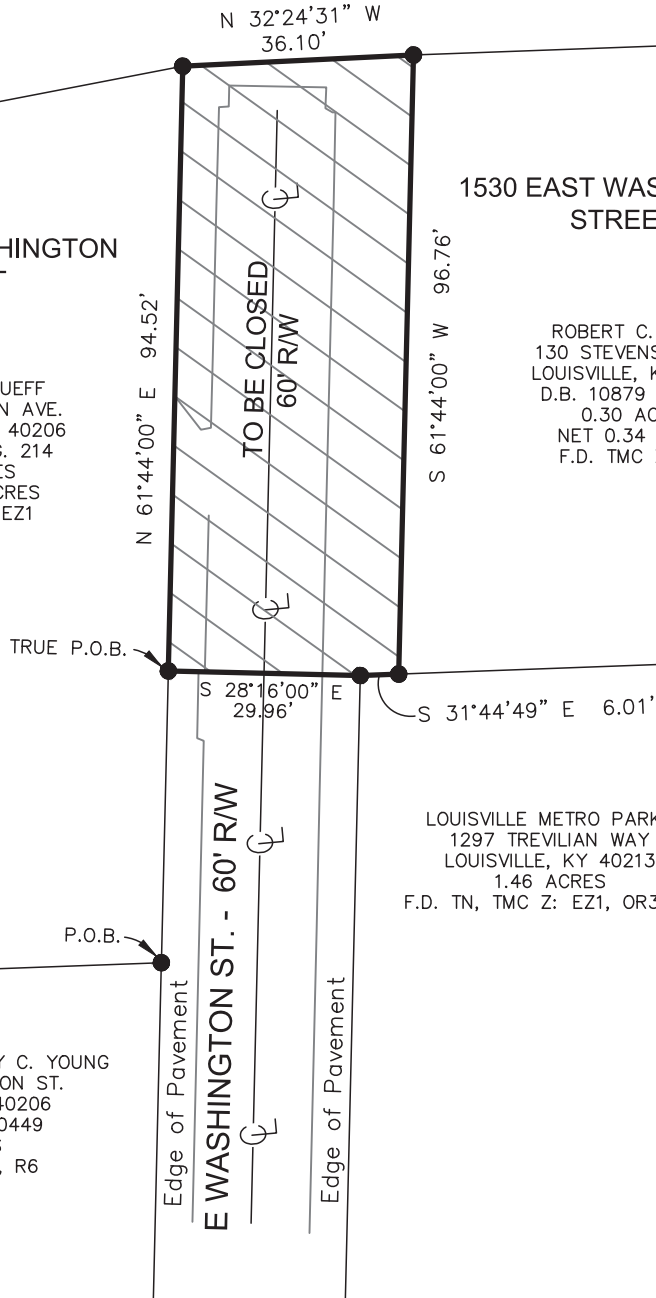
**INTERSTATE 64 - FULLY CONTROLLED ACCESS**

1534 EAST WASHINGTON STREET

ROBERT C. RUEFF  
130 STEVENSON AVE.  
LOUISVILLE, KY 40206  
D.B. 12116 PG. 214  
0.41 ACRES  
NET 0.45 ACRES  
F.D. TN Z: EZ1

1530 EAST WASHINGTON STREET

ROBERT C. RUEFF  
130 STEVENSON AVE.  
LOUISVILLE, KY 40206  
D.B. 10879 PG. 530  
0.30 ACRES  
NET 0.34 ACRES  
F.D. TMC Z: EZ1



LOUISVILLE METRO PARKS  
1297 TREVILIAN WAY  
LOUISVILLE, KY 40213  
1.46 ACRES  
F.D. TN, TMC Z: EZ1, OR3, C1

DOUGLAS R. AND JUDY C. YOUNG  
1523 E WASHINGTON ST.  
LOUISVILLE, KY 40206  
D.B. 6802 PG. 0449  
0.32 ACRES  
F.D. TN Z: EZ1, R6

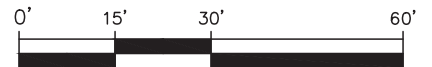
**NOTE:**

UTILITY EASEMENTS WILL BE GRANTED PRIOR TO ROAD CLOSURE APPROVAL.

**LAND SURVEYOR'S CERTIFICATE**

I, RICHARD C WILLIAMSON, JR, HEREBY CERTIFY THAT THIS PLAT WAS MADE UNDER MY DIRECT SUPERVISION, AND THAT THE DIRECTIONAL AND LINEAR MEASUREMENTS SHOWN HEREON ARE TRUE AND CORRECT TO THE BEST OF MY KNOWLEDGE.

- INDICATES PROPERTY CORNER (DEED)
- ▨ INDICATES PROPOSED ROAD CLOSURE



RICHARD C. WILLIAMSON JR  
LICENSED PROFESSIONAL LAND SURVEYOR # 4050

DATE

GRAPHIC SCALE



**Milestone**  
  
**design group**  
108 Daventry Lane, Suite 300  
Louisville, KY 40223  
502.327.7073  
www.milestonedesign.org

**PARTIAL ROAD CLOSURE PLAT**

THE PURPOSE OF THIS PLAT TO SHOW THE LOCATION OF PROPOSED STREET CLOSURE

LOCATION: 1530 & 1534 E. WASHINGTON ST.

ROBERT C. RUEFF  
130 STEVENSON AVE.  
LOUISVILLE, KY 40206  
D.B. 10879 PG. 530  
D.B. 12116 PG. 214  
Z: EZ1 FD: TN

JOB # 22014	DRAWN BY S.R.M.	CHECKED BY R.C.W.	DATE 8/19/22	SCALE 1" = 30'
----------------	--------------------	----------------------	-----------------	-------------------