

11905 Dixie Highway

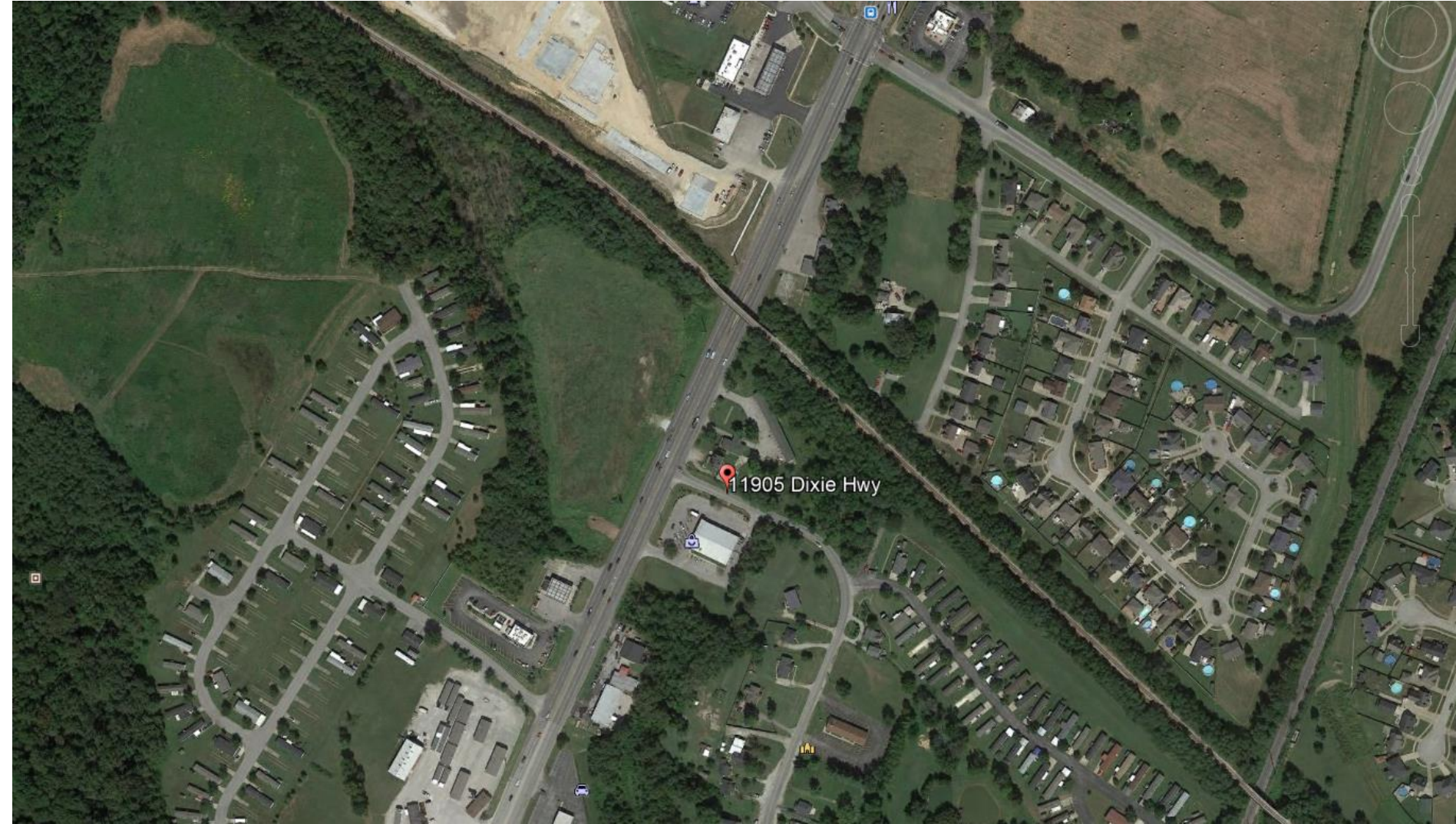
CASE NO. 17ZONE1022

Change in Zoning from R-4 to C-M
Change in Form District from Neighborhood to Suburban Marketplace
Detailed District Development Plan with Waivers

Applicant: 11905 Dixie Highway, LLC



Clifford H. Ashburner
Dinsmore & Shohl LLP





DIXIE HWY

11905 Dixie Hwy

E ORELL RD



© 2017 Google
© 2017 Google

Google Earth



DOLLAR
GENERAL

HARDWORKING
SERVICES

[Blank sign]

Clear

WALMART

Shell









© 2017 Google
© 2017 Google

Google Earth

