

One Bright City
Brightside™



**Metro Council
Sustainability Committee Presentation**

October 6, 2016



Brightside Cleanliness Index



- Final Assessment for 2016 completed September 3, 2016
- Overall City Avg: 2.10 for September
- Improvement of 0.08 from first to last assessment for 2016
- 2016 Overall City Avg: 2.13

District	March	June	September	2016
1	2.93	3.06	2.88	2.96
2	2.58	2.71	2.32	2.53
3	2.85	2.71	2.58	2.71
4	2.43	2.48	3.00	2.64
5	2.46	2.42	2.83	2.57
6	2.38	2.31	2.48	2.39
7	1.70	1.48	1.58	1.59
8	1.65	1.55	1.50	1.57
9	2.10	1.91	1.81	1.94
10	2.65	1.88	2.37	2.30
11	1.50	1.55	1.53	1.52
12	2.33	1.78	1.72	1.94
13	2.13	2.33	2.36	2.27
14	2.43	2.45	2.34	2.41
15	2.98	2.75	2.58	2.77
16	2.03	1.86	2.07	1.98
17	1.86	1.86	1.73	1.82
18	1.75	1.54	1.66	1.65
19	1.65	1.66	1.73	1.68
20	2.00	1.43	1.38	1.60
21	1.90	2.62	2.75	2.42
22	2.18	2.22	2.04	2.15
23	1.70	1.74	1.70	1.71
24	2.38	2.38	1.58	2.11
25	2.05	2.08	2.09	2.07
26	2.15	2.26	2.07	2.16

March Avg	June Avg	September Avg	2016 City Avg
2.18	2.11	2.10	2.13

Scale: 1.00 = No Visible Litter; 4.00 = Most Littered			
1.00 - 1.99	2.00 - 2.99	3.00 - 3.99	4.00



Brightside Cleanliness Index

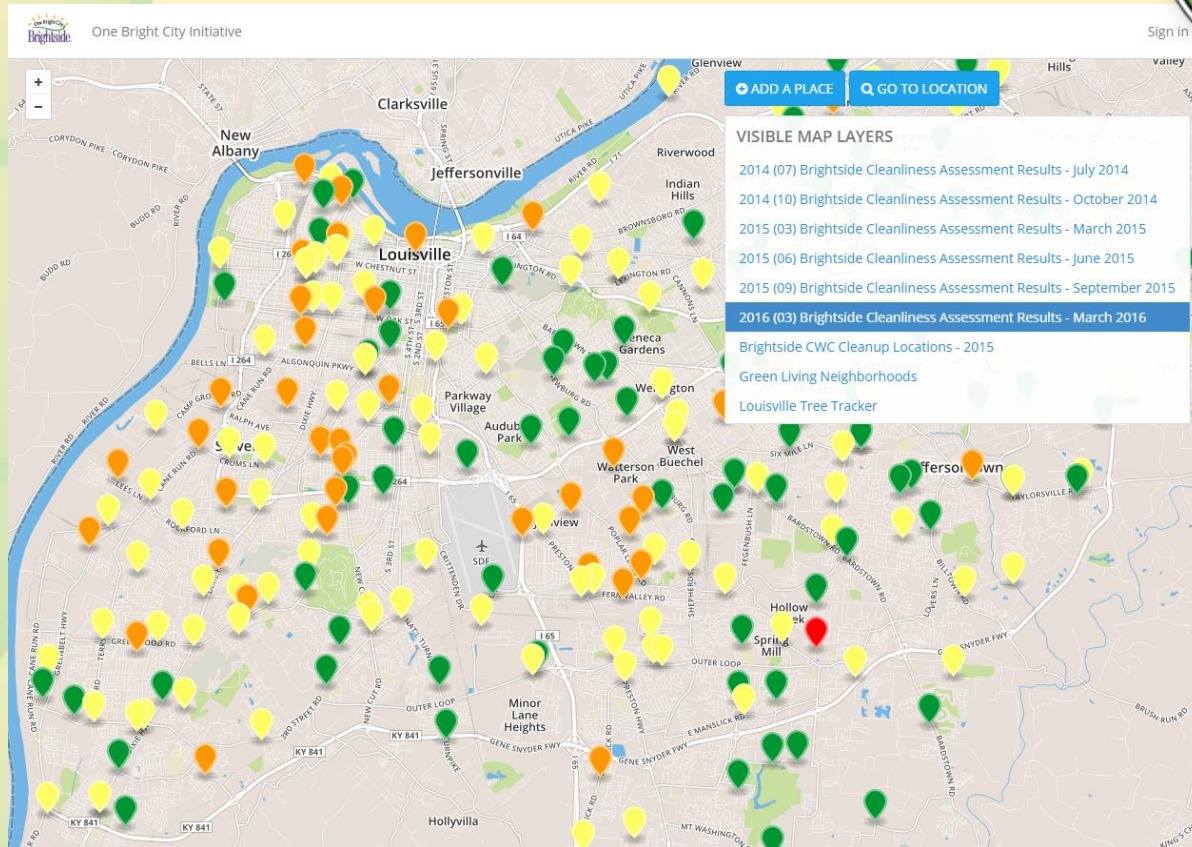


2014 City Avg	2015 City Avg	2016 City Avg
2.00	2.08	2.13

- **Up 0.13 over 3 years** (Score shows more litter present in assessed areas)
- Potential Causes of Increased score:
 - Better training of Assessment teams on assessment goals, definitions, and assessment tools
 - More awareness in general of litter presence among assessors



Brightside Cleanliness Index



The Interactive Map can be found at www.Brightsideinc.org/Clean



Brightside & Passport Health Plan Community-Wide Cleanup



Saturday, October 22th
Suggested Times 8:00a – Noon



Registration is still available!
www.brightsideinc.org/clean



Brightside Community-Wide Planting Day



Saturday,
November 5th



Brightside Community-Wide Planting Day Library Partnership



Brightside & Waste Management of Kentucky's Premium Compost Sale

**Saturday, Oct. 8th & Saturday, Oct. 15th
8:00am to 12:00pm each day**



Waste Management of KY Recycling and Disposal Facility

located at 2673 Outer Loop

\$2.50 per bag or \$40.00 per Bobcat scoop

A discount coupon is available on the Brightside webpage



Brightside Fall Plant Sale



**Tower View
Farms & Nursery**



- ❁ **Plant Kingdom** ❁
4101 Westport Road 40207
20% of all trees sales
October 26 through November 9
- ❁ **St. Matthews Feed & Seed** ❁
225 Chenoweth Lane 40207
10% of all sales
October 29/30 and November 5/6
- ❁ **Tower View Farms & Nursery** ❁
12523 Taykorsville Road 40299
20% of all tree sales
October 29/30 and November 5/6
- ❁ **Ken Mulch** ❁
2708 Outer Loop 40219
10% of all sales
October 29 and November 5
- ❁ **Frank Otte - Middletown** ❁
12902 Shelbyville Road 40243
20% of all plant and plant material sales
October 29/30 and November 5/6
- ❁ **Frank Otte - Bardstown** ❁
2930 Bardstown Road 40205
10% of all sales
October 29/30 and November 5/6
- ❁ **Idlewild Butterfly Farm** ❁
1100 Logan Street 40204
10% of all sales
October 29 and November 5



Brightside Bash 2016



Thank
You



www.BrightsideInc.org