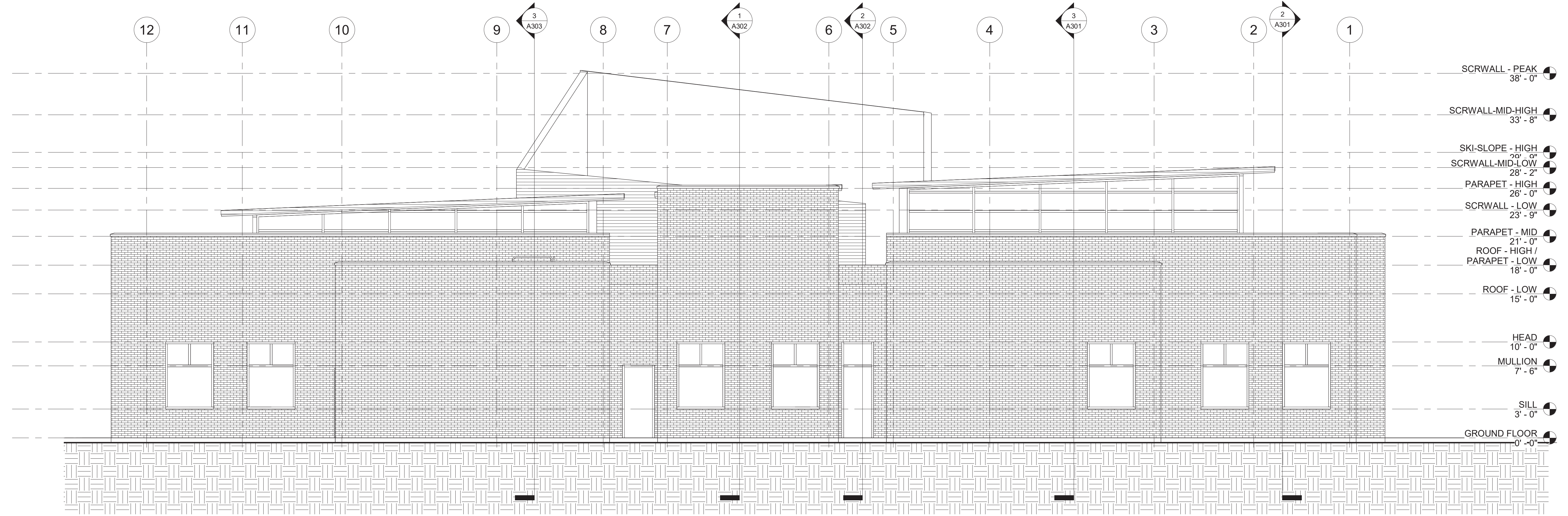


1 ELEVATION - SOUTH
3/16" = 1'-0"



2 ELEVATION - NORTH
3/16" = 1'-0"

DATE: 2020.03.13

Revision Schedule	
No.	Date

DESIGN DEVELOPMENT

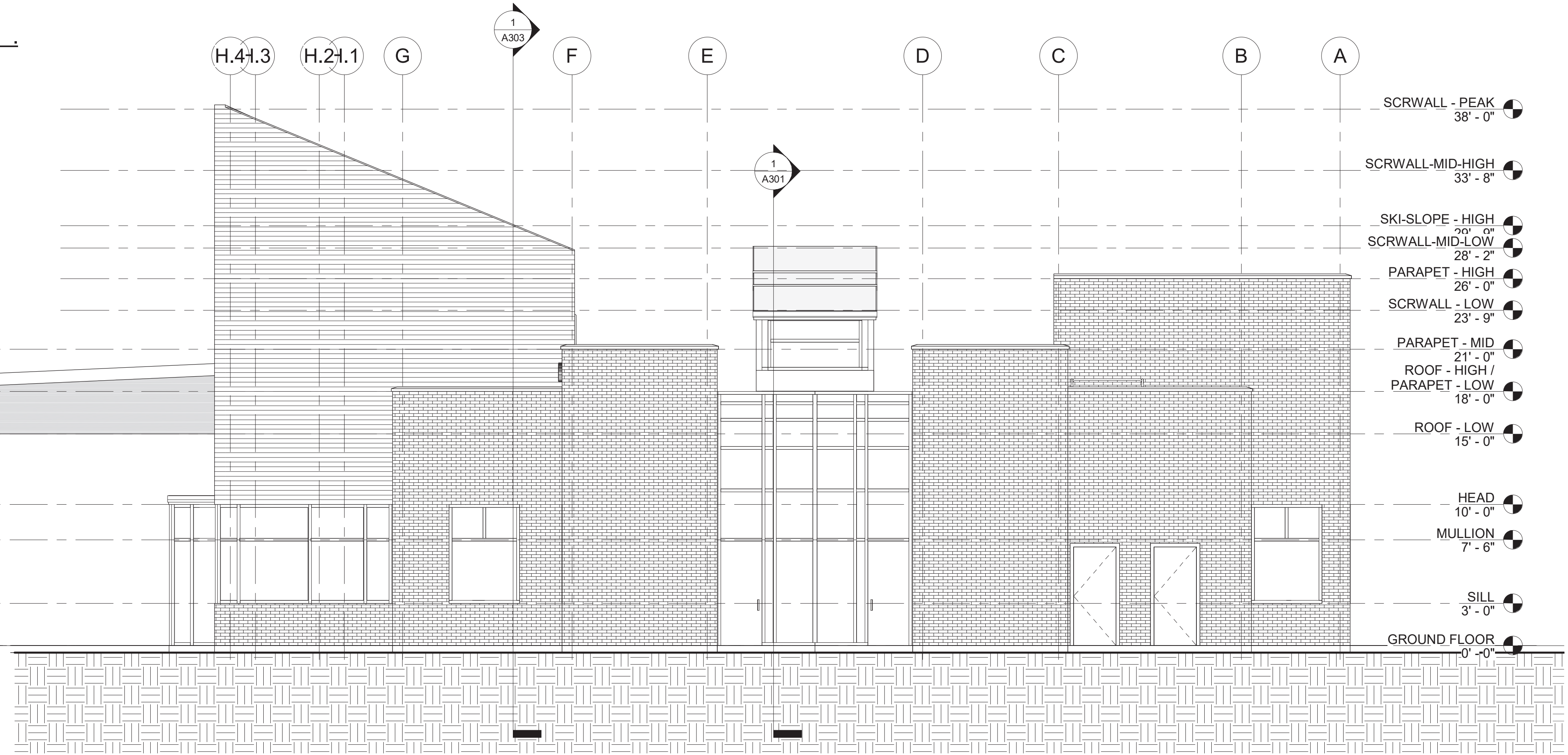
Kentucky Foot & Ankle Specialists - HQ
7397 Jefferson Boulevard, Louisville Kentucky
Architectural Investments
222 South First Street - Suite 206 - Louisville, Kentucky 40202 -1367
tel (502) 562 9220 - fax (502) 585 1571 - www.architecturalinvestments.com



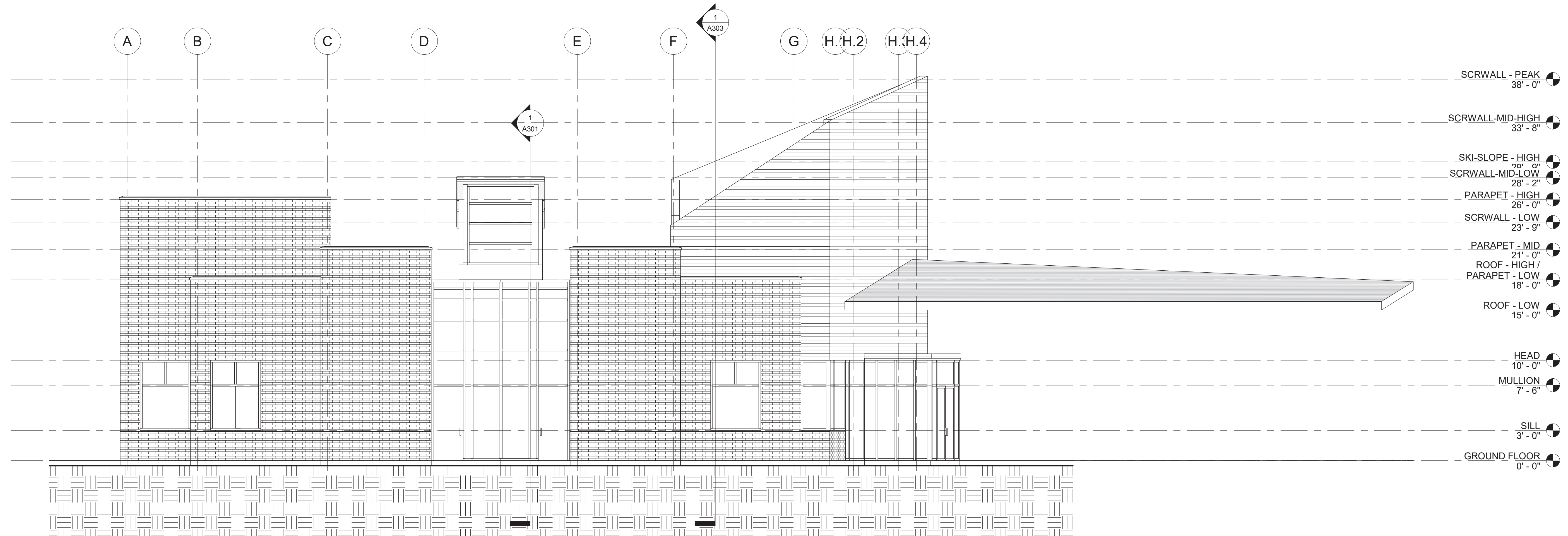
ELEVATIONS
A201
SCALE: 3/16" = 1'-0"

EXTERIOR MATERIALS SELECTIONS

FIELD BRICK:	RED BRICK (FIELD): SIOUX CITY BRICK, GRANITE RED VELOUR; NO SUBSTITUTION.
ACCENT BRICK:	GREY BRICK (ACCENT): WATSONTOWN BRICK CO., CENTRAL PARK SMOOTH (TYPE 8 MODULAR CORED); NO SUBSTITUTION.
MORTAR:	(REFER TO SPECIFICATIONS)
CAST STONE SILL:	(REFER TO SPECIFICATIONS, COLOR SELECTED FROM MANUF. STANDARD OPTIONS)
METAL CAP / COPING:	CLEAR ANNOXIDIZED ALUMINUM
METAL PANEL:	CLEAR ANNOXIDIZED ALUMINUM - PROFILE TO BE DETERMINED
STOREFRONT:	CLEAR ANNOXIDIZED ALUMINUM
GLAZING:	INSULATED (TEMPERED AS REQ.) GREY 15% SOLARBAN TINT
SIGNAGE:	BACKLIT CAST ALUMINUM LETTERS - CHANNEL SET LETTERS ALTERNATE



① ELEVATION - EAST
3/16" = 1'-0"



② ELEVATION - WEST
3/16" = 1'-0"

DATE: 2020.03.13

Revision Schedule	
No.	Date

DESIGN DEVELOPMENT

Kentucky Foot & Ankle Specialists - HQ
7397 Jefferson Boulevard, Louisville Kentucky
Architectural Investments
222 South First Street - Suite 206 - Louisville, Kentucky 40202 -1367
tel (502) 562 9220 - fax (502) 585 1571 - www.architecturalinvestments.com



ELEVATIONS

A202
SCALE: 3/16" = 1'-0"