

74+00

75+00

76+00

77+00

78+00

79+00

80+00

LT. STA 74+00 TO STA. 77+44.44
CONST. 738 S.Y. SODDING

STORM SEWER STRUCTURE DATA LEFT

STRUC. NO.	STRUCTURE TYPE	F.L. OR T/G	INVERT
1036	CBI TYPE A-38-2	511.15	505.56
1039	CBI TYPE A-38-2	509.91	505.15
1041	CBI TYPE A-38-6	509.69	505.02
MH3	MANHOLE TYPE A	510.49	504.89
HW3	36" PIPE CULVERT HDWL	-	504.84
1045	CBI TYPE A-6-2	509.91	505.44

LT. STA. 74+00 TO STA. 77+42.99 CONST.
307 L.F. OF STD. CURB AND GUTTER MOD.

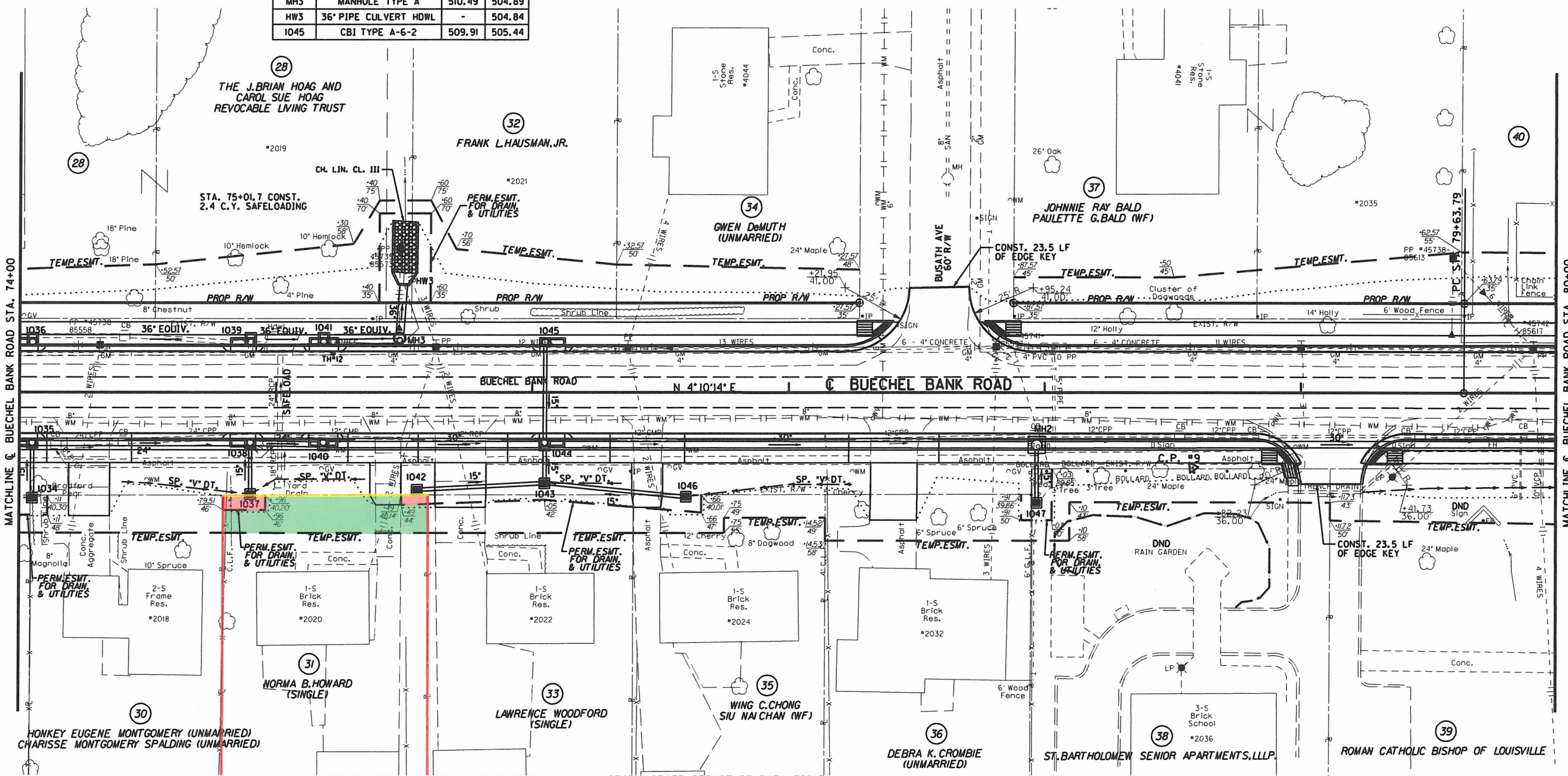
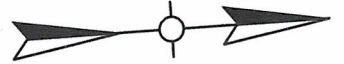
LT. STA. 74+00 TO STA. 77+40.96 CONST.
189 S.Y. 5' CONCRETE SIDEWALK W/ 15 S.F.
DETECTABLE WARNINGS

LT. STA. 77+74.19 TO STA. 80+00 CONST.
230 L.F. OF STD. CURB AND GUTTER MOD.

LT. STA. 77+76.21 TO STA. 80+00 CONST.
124 S.Y. 5' CONCRETE SIDEWALK W/ 15 S.F.
DETECTABLE WARNINGS

LT. STA 77+72.75 TO STA. 80+00
CONST. 410 S.Y. SODDING

LT. STA 79+84.26 TO STA. 80+00
REMOVE AND RESET 33 L.F. FENCE



RT. STA. 74+00 TO STA. 79+00.33 CONST.
304 L.F. OF STD. CURB AND GUTTER MOD.

RT. STA. 74+00 TO STA. 79+00.03 CONST.
191 S.Y. 5' CONCRETE SIDEWALK W/ 13 S.F.
DETECTABLE WARNINGS

RT. STA. 79+23.63 TO STA. 80+00 CONST.
81 L.F. OF STD. CURB AND GUTTER MOD.

RT. STA. 79+26.47 TO STA. 80+00 CONST.
41 S.Y. 5' CONCRETE SIDEWALK W/ 14 S.F.
DETECTABLE WARNINGS

RT. STA 74+00 TO STA. 78+95.26
CONST. 695 S.Y. SODDING

STORM SEWER STRUCTURE DATA RIGHT

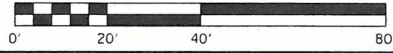
STRUC. NO.	STRUCTURE TYPE	F.L. OR T/G	INVERT
1042	MSD CATCH BASIN TY I	509.75	506.50
1043	MSD CATCH BASIN TY I	509.34	505.62
1044	CBI TYPE A-24-2	509.91	503.74
1046	MSD CATCH BASIN TY I	509.36	506.01
1047	MSD CATCH BASIN TY I	508.36	505.11
MH2	MANHOLE TYPE C	511.11	502.19

RT. STA 79+24.53 TO STA. 80+00
CONST. 136 S.Y. SODDING

ENTRANCES RIGHT

STATION	WIDTH	CEM. CONC. ENT. P.VMT. - 8"	ENTRANCE PAVEMENT
74+27	16'	42 S.Y.	37 S.Y. - CONCRETE
75+42	12'	35 S.Y.	22 S.Y. - CONCRETE
75+72	20'	45 S.Y.	39 S.Y. - CONCRETE
76+45	12'	37 S.Y.	23 S.Y. - ASPHALT
77+41	18'	45 S.Y.	45 S.Y. - ASPHALT

C.P. #9 - IRON PIN TRAVERSE CAP
STA. 78+57.87, 29.34' RT., EL. 510.05



RIGHT OF WAY PLANS

PLAN SHEET
BUECHEL BANK ROAD
STA. 74+00 TO STA. 80+00

FILE NAME: P:\29287\1\SHEETS\9287TR11.DGN

USER: RUTHERFORD DATE PLOTTED: July 22, 2016

E-SHEET NAME: R010DPL

MicroStation v8.11.9.459