

BRENTWOOD COMMONS – CASE #15ZONE1015

ZONING DESCRIPTION

FROM RR TO R5-A

Being a certain tract of land in Jefferson County, Kentucky, located south of Interstate 265 and north of Oakland hills trail, being bound on the east by Floyds Fork Creek and bound on the west by Bardstown Road and being more particularly described as follows:

Beginning at a point in the east right-of-way line of said Bardstown Road, approximately 6200 feet south of its intersection with Thixton Lane, said point being the northwest corner to a tract of land conveyed to 21st Century Parks, Inc. as recorded in Deed Book 9312, Page 60 in the office of the Clerk of Jefferson County, Kentucky;

Thence with the east right-of-way line of said Bardstown Road the following (7) seven calls: Thence N 13°18'11" W, a distance of 512.27 feet to a point; Thence S 75°44'32" W, a distance of 20.00 feet to a point; Thence N 14°15'28" W, a distance of 380.94 feet to a point; Thence N 12°15'29" E, a distance of 125.22 feet to a point; Thence N 38°18'30" W, a distance of 63.56 feet to a point; Thence N 14°15'29" W, a distance of 68.97 feet to a point; Thence N 08°27'29" E, a distance of 75.37 feet to a point, being the southwest corner to a tract of land conveyed to Denis R. & Grace C. Bryan as recorded in Deed Book 6193, Page 412 in the office aforesaid; Thence leaving said Bardstown Road and running with the south line of said Bryan tract, N 41°35'52" E, a distance of 1042.58 feet to a point, said point being in the center of Floyds Fork Creek; Thence with the centerline of said Floyds Fork Creek the following (6) six calls: S 48°58'08" E, a distance of 190.00 feet to a point; Thence S 38°11'45" E, a distance of 198.59 feet to a point; Thence S 30°23'14" E, a distance of 238.88 feet to a point; Thence S 23°33'28" E, a distance of 175.84 feet to a point; Thence S 19°43'25" E, a distance of 185.87 feet to a point; Thence S 04°02'54" E, a distance of 211.40 feet to a point, being the northeast corner to said 21st Century Parks, Inc. tract; Thence with the north line of said 21st Century Parks, Inc. tract the following (3) three calls: S 46°48'17" W, a distance of 444.28 feet to a point; Thence S 21°41'49" W, a distance of 550.79 feet to a point; Thence S 76°41'49" W, a distance of 462.15 feet to the point of beginning.

Having an area of 1,479,827 square feet or 33.972 acres.

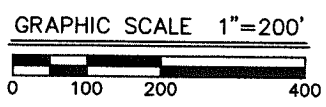
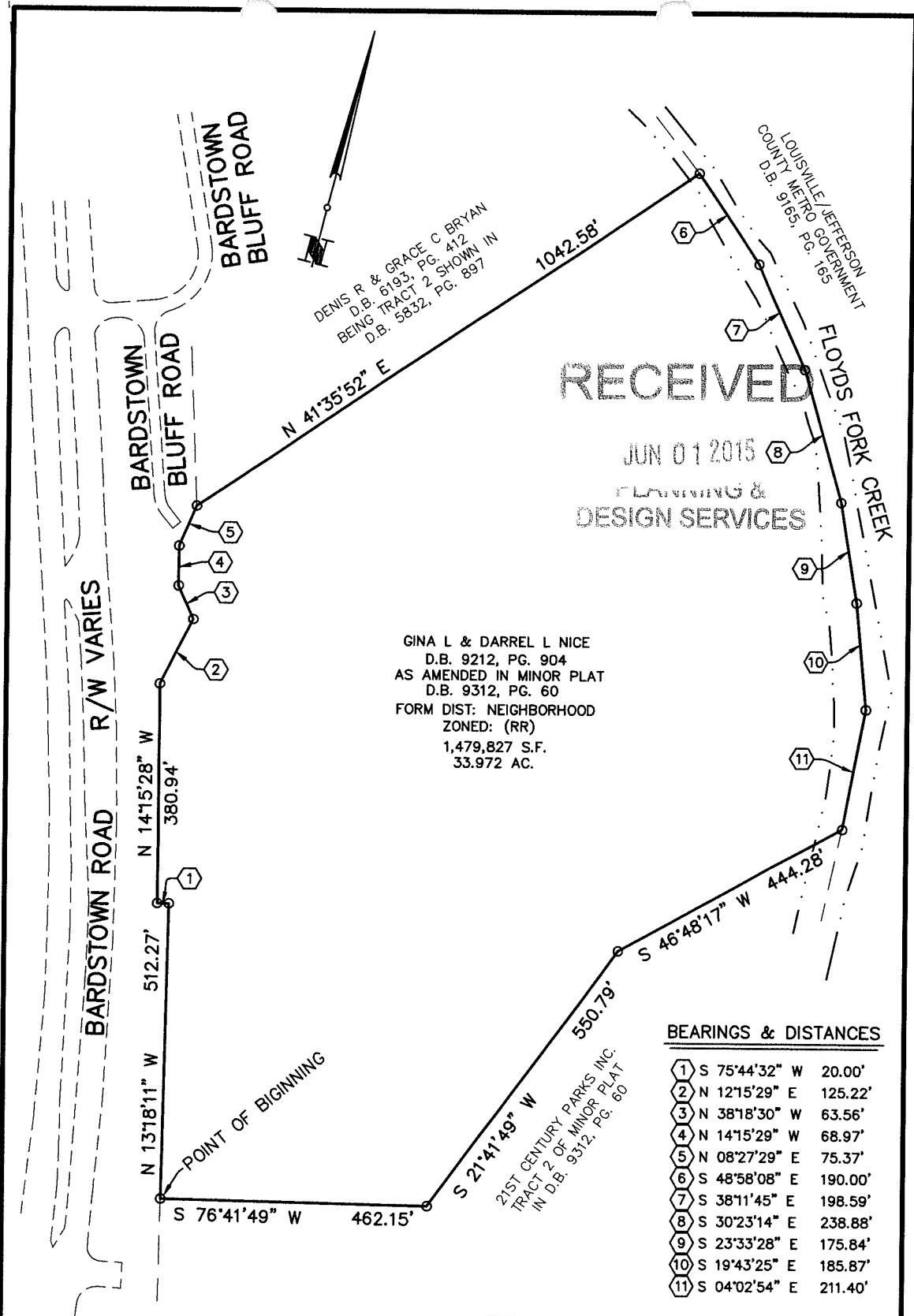
Being a portion of the same property conveyed to Gina L. & Darrel L. Nice by deed dated April 11, 2008 of record in Deed Book 9212, Page 904 and amended by the minor subdivision plat of the same as recorded in Deed Book 9312, Page 60 on file in the office of the County Clerk of Jefferson County, Kentucky.

RECEIVED

JUN 01 2015

PLANNING &
DESIGN SERVICES

15Z01E1015



MINDEL, SCOTT & ASSOCIATES, INC.
 PLANNING • ENGINEERING • SURVEYING
 LANDSCAPE ARCHITECTURE
 5151 Jefferson Boulevard
 Louisville, Kentucky 40291
 (502) 485-1508

BRENTWOOD COMMONS - CASE #15ZONE1015
ZONING EXHIBIT - RR TO R-5A
 OWNER: GINA L. & DARREL L. NICE
 10509 BARDSTOWN BLUFF ROAD
 LOUISVILLE, KENTUCKY 40291
 DEED BOOK 9212, PAGE 904
 AS AMENDED IN
 DEED BOOK 9312, PAGE 60
 TAX BLOCK 0061, LOT 0087
 LOCATION: 10509 BARDSTOWN BLUFF ROAD
 LOUISVILLE, KENTUCKY 40291
 DATE: 05/29/15
 SCALE: 1"=200'

152011015