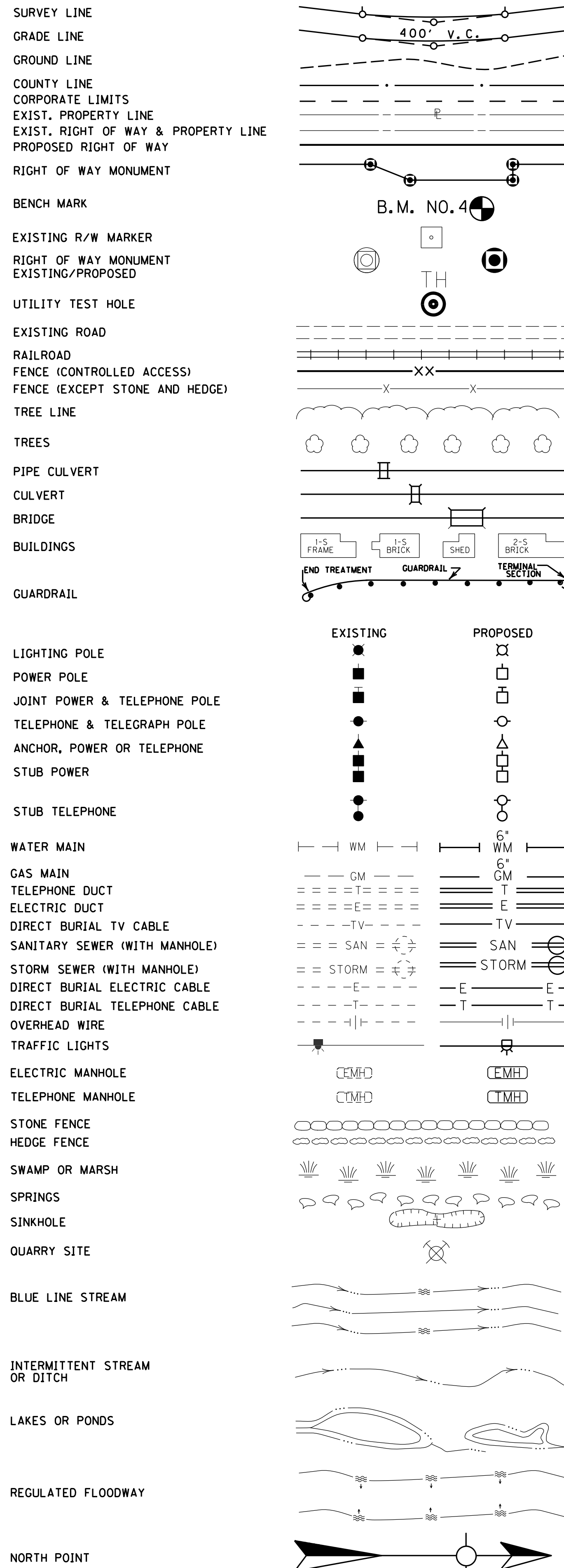
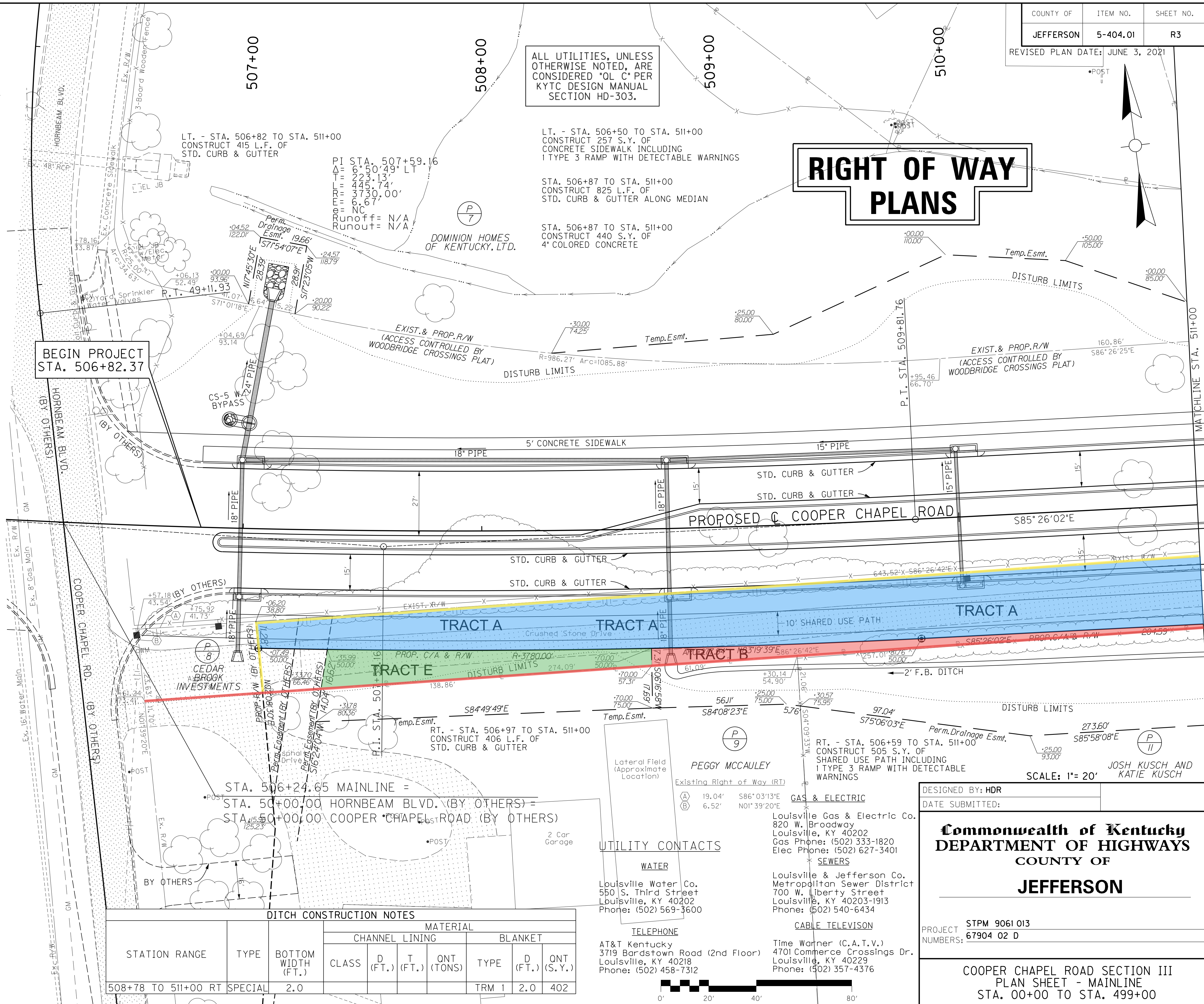


CONVENTIONAL SIGNS



RIGHT OF WAY PLANS



ALL UTILITIES, UNLESS OTHERWISE NOTED, ARE CONSIDERED *QL C* PER KYTC DESIGN MANUAL SECTION HD-303.

BEGIN PROJECT STA. 506+82.37

LT. - STA. 506+50 TO STA. 511+00 CONSTRUCT 257 S.Y. OF CONCRETE SIDEWALK INCLUDING 1 TYPE 3 RAMP WITH DETECTABLE WARNINGS

STA. 506+87 TO STA. 511+00 CONSTRUCT 825 L.F. OF STD. CURB & GUTTER ALONG MEDIAN

STA. 506+87 TO STA. 511+00 CONSTRUCT 440 S.Y. OF 4" COLORED CONCRETE

LT. - STA. 506+82 TO STA. 511+00 CONSTRUCT 415 L.F. OF STD. CURB & GUTTER

PI STA. 507+59.16
 Δ 1 6' 23.13'
 Δ 2 423.74'
 Δ 3 3730.00'
 Δ 4 67'
 Runoff= N/A
 Runout= N/A

DOMINION HOMES OF KENTUCKY, LTD.

EXIST. & PROP. R/W (ACCESS CONTROLLED BY WOODBRIDGE CROSSINGS PLAT)

EXIST. & PROP. R/W (ACCESS CONTROLLED BY WOODBRIDGE CROSSINGS PLAT)

RT. - STA. 506+97 TO STA. 511+00 CONSTRUCT 406 L.F. OF STD. CURB & GUTTER

RT. - STA. 506+59 TO STA. 511+00 CONSTRUCT 505 S.Y. OF SHARED USE PATH INCLUDING 1 TYPE 3 RAMP WITH DETECTABLE WARNINGS

STA. 506+24.65 MAINLINE =
 STA. 50+00.00 HORNBEAM BLVD. (BY OTHERS) =
 STA. 50+00.00 COOPER CHAPEL ROAD (BY OTHERS)

UTILITY CONTACTS

- GAS & ELECTRIC**
 Louisville Gas & Electric Co.
 820 W. Broadway
 Louisville, KY 40202
 Gas Phone: (502) 333-1820
 Elec Phone: (502) 627-3401
- SEWERS**
 Louisville & Jefferson Co. Metropolitan Sewer District
 700 W. Liberty Street
 Louisville, KY 40203-1913
 Phone: (502) 540-6434
- CABLE TELEVISION**
 Time Warner (C.A.T.V.)
 4701 Commerce Crossings Dr.
 Louisville, KY 40229
 Phone: (502) 357-4376
- WATER**
 Louisville Water Co.
 550 S. Third Street
 Louisville, KY 40202
 Phone: (502) 569-3600
- TELEPHONE**
 AT&T Kentucky
 3719 Bardstown Road (2nd Floor)
 Louisville, KY 40218
 Phone: (502) 458-7312

DITCH CONSTRUCTION NOTES

STATION RANGE	TYPE	BOTTOM WIDTH (FT.)	MATERIAL						
			CHANNEL LINING		BLANKET				
			CLASS	D (FT.)	T (FT.)	QNT (TONS)	TYPE	D (FT.)	QNT (S. Y.)
508+78 TO 511+00 RT	SPECIAL	2.0					TRM 1	2.0	402

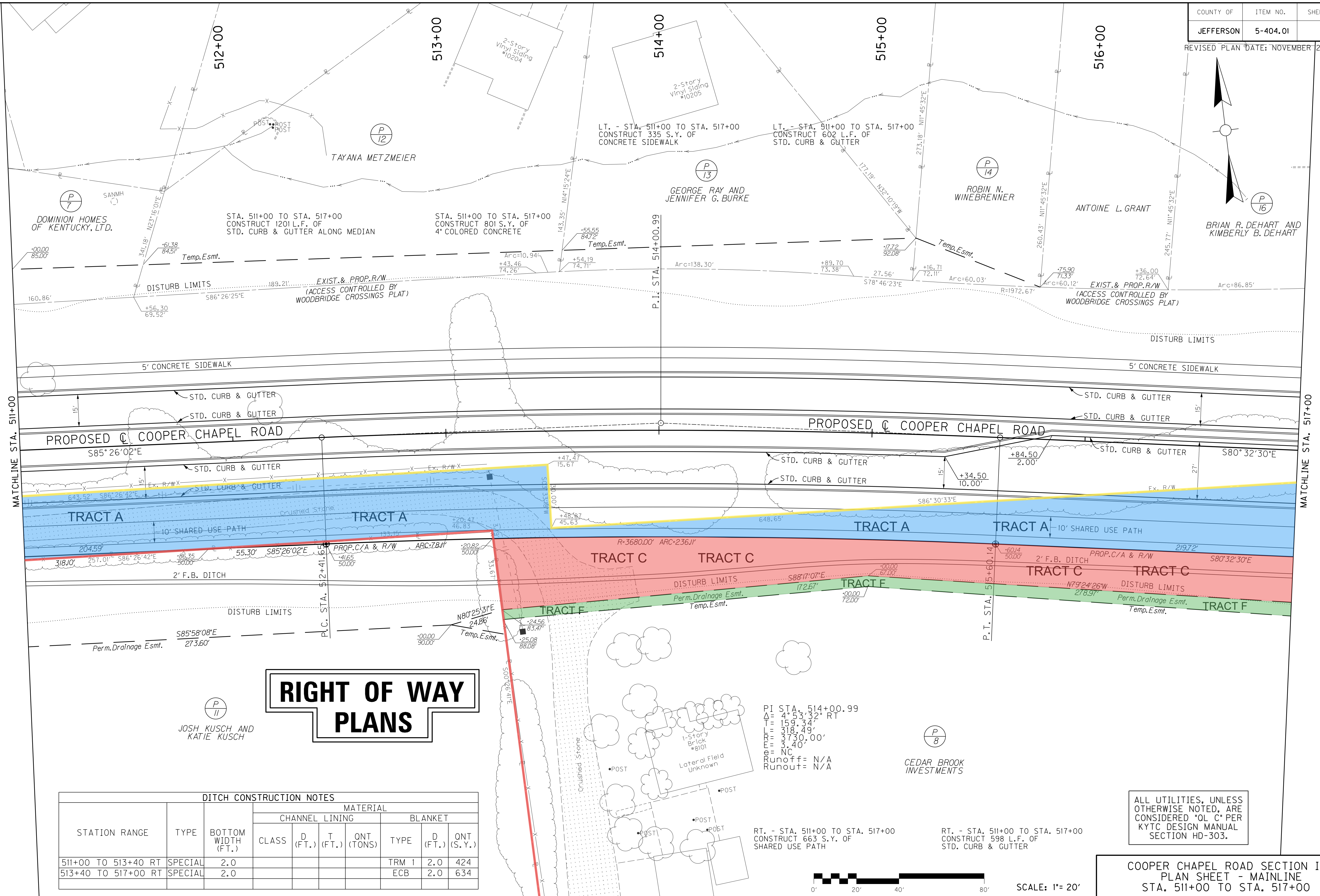
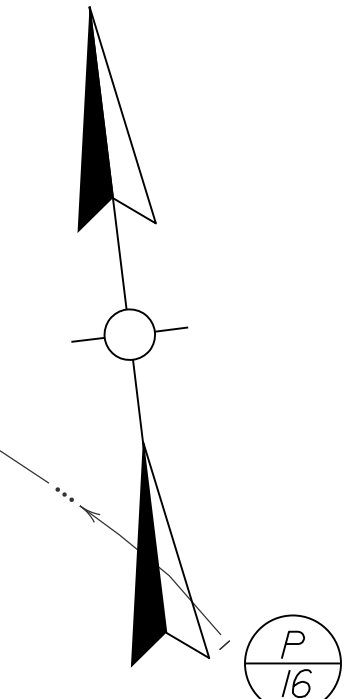
DESIGNED BY: HDR
 DATE SUBMITTED:

Commonwealth of Kentucky
DEPARTMENT OF HIGHWAYS
 COUNTY OF
JEFFERSON

PROJECT STPM 9061 013
 NUMBERS: 67904 02 D

COOPER CHAPEL ROAD SECTION III
 PLAN SHEET - MAINLINE
 STA. 00+00 TO STA. 499+00

FILE NAME: C:\PWORKING\N\PTTT_D0813532\34966-R3.DGN
 USER: JACSMITH
 DATE PLOTTED: October 13, 2020
 E-SHEET NAME: R00300PL
 MicroStation v8.11.9.919



RIGHT OF WAY PLANS

(P 11)
JOSH KUSCH AND
KATIE KUSCH

PI STA. 514+00.99
 $\Delta = 4^{\circ}53'32''$ RT
 $T = 159.34'$
 $L = 318.49'$
 $M = 3730.00'$
 $e = 3.40'$
 $\theta = NC$
 Runoff = N/A
 Runout = N/A

(P 8)
CEDAR BROOK
INVESTMENTS

RT. - STA. 511+00 TO STA. 517+00
 CONSTRUCT 663 S.Y. OF
 SHARED USE PATH

RT. - STA. 511+00 TO STA. 517+00
 CONSTRUCT 598 L.F. OF
 STD. CURB & GUTTER

ALL UTILITIES, UNLESS
 OTHERWISE NOTED,
 ARE
 CONSIDERED "OL C" PER
 KYTC DESIGN MANUAL
 SECTION HD-303.

COOPER CHAPEL ROAD SECTION III
 PLAN SHEET - MAINLINE
 STA. 511+00 TO STA. 517+00



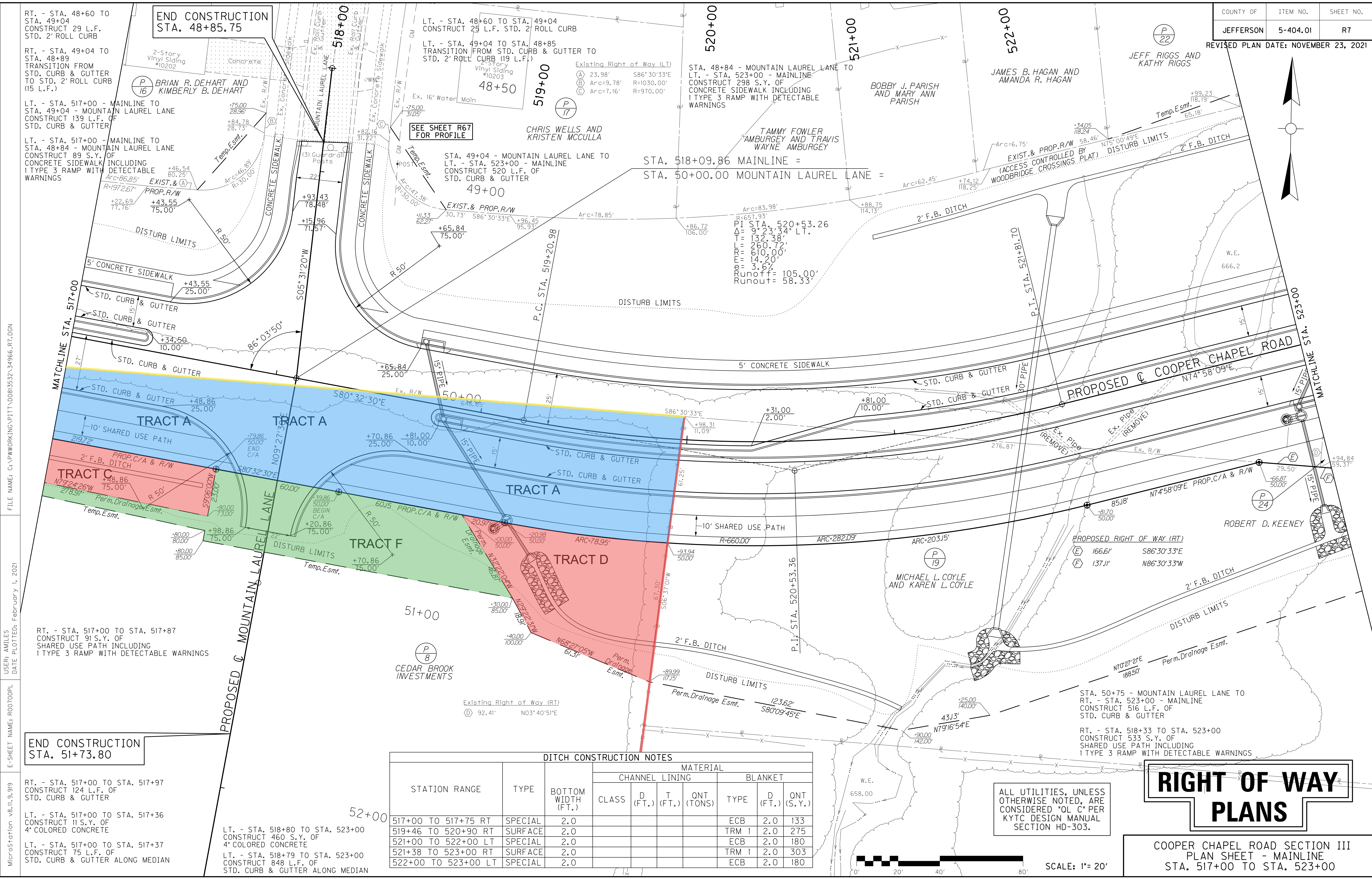
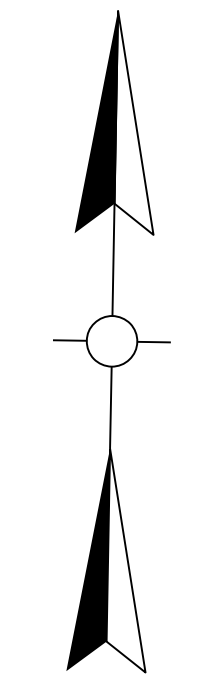
DITCH CONSTRUCTION NOTES									
STATION RANGE	TYPE	BOTTOM WIDTH (FT.)	MATERIAL						
			CHANNEL LINING			BLANKET			
			CLASS	D (FT.)	T (FT.)	QNT (TONS)	TYPE	D (FT.)	QNT (S.Y.)
511+00 TO 513+40	RT	SPECIAL					TRM 1	2.0	424
513+40 TO 517+00	RT	SPECIAL					ECB	2.0	634

FILE NAME: C:\PWORK\ING\PITT_D0813532\34966-R5.DGN

USER: AMILES
DATE PLOTTED: November 19, 2020

E-SHEET NAME: R00500PL

MicroStation v8.11.9.919



RT. - STA. 48+60 TO STA. 49+04
CONSTRUCT 29 L.F. OF
STD. 2" ROLL CURB

RT. - STA. 49+04 TO STA. 48+89
TRANSITION FROM
STD. CURB & GUTTER
TO STD. 2" ROLL CURB
(15 L.F.)

LT. - STA. 517+00 - MAINLINE TO STA. 49+04 - MOUNTAIN LAUREL LANE
CONSTRUCT 139 L.F. OF
STD. CURB & GUTTER

LT. - STA. 517+00 - MAINLINE TO STA. 48+84 - MOUNTAIN LAUREL LANE
CONSTRUCT 89 S.Y. OF
CONCRETE SIDEWALK INCLUDING
1 TYPE 3 RAMP WITH DETECTABLE
WARNINGS

END CONSTRUCTION
STA. 48+85.75

518+00

LT. - STA. 48+60 TO STA. 49+04
CONSTRUCT 25 L.F. STD. 2" ROLL CURB

LT. - STA. 49+04 TO STA. 48+85
TRANSITION FROM STD. CURB & GUTTER TO
STD. 2" ROLL CURB (19 L.F.)

48+50

519+00

Existing Right of Way (LT)

(A) 23.98' S86°30'33"E

(B) Arc=9.78' R=1030.00'

(C) Arc=7.16' R=970.00'

520+00

521+00

522+00

STA. 48+84 - MOUNTAIN LAUREL LANE TO
LT. - STA. 523+00 - MAINLINE
CONSTRUCT 298 S.Y. OF
CONCRETE SIDEWALK INCLUDING
1 TYPE 3 RAMP WITH DETECTABLE
WARNINGS

BOBBY J. PARISH
AND MARY ANN
PARISH

TAMMY FOWLER
AMBURGEY AND TRAVIS
WAYNE AMBURGEY

JAMES B. HAGAN AND
AMANDA R. HAGAN

JEFF RIGGS AND
KATHY RIGGS

Temp. Esmt.
+99.23
118.19'

+34.05
116.24'

N75°00'49"E
58.46'

EXIST. & PROP. R/W
(ACCESS CONTROLLED BY
WOODBRIDGE CROSSINGS PLAT.)

2' F.B. DITCH

2' F.B. DITCH

2' F.B. DITCH

FILE NAME: C:\PWORKING\PI\TT\0813532\34966-R7.DGN

USER: AMILES
DATE PLOTTED: February 1, 2021

E-SHEET NAME: R00700PL

MicroStation v8.11.9.919

END CONSTRUCTION
STA. 51+73.80

RT. - STA. 517+00 TO STA. 517+97
CONSTRUCT 124 L.F. OF
STD. CURB & GUTTER

LT. - STA. 517+00 TO STA. 517+36
CONSTRUCT 11 S.Y. OF
4" COLORED CONCRETE

LT. - STA. 517+00 TO STA. 517+37
CONSTRUCT 75 L.F. OF
STD. CURB & GUTTER ALONG MEDIAN

LT. - STA. 518+80 TO STA. 523+00
CONSTRUCT 460 S.Y. OF
4" COLORED CONCRETE

LT. - STA. 518+79 TO STA. 523+00
CONSTRUCT 848 L.F. OF
STD. CURB & GUTTER ALONG MEDIAN

DITCH CONSTRUCTION NOTES									
STATION RANGE	TYPE	BOTTOM WIDTH (FT.)	MATERIAL						
			CHANNEL LINING		BLANKET				
			CLASS	D (FT.)	T (FT.)	ONT (TONS)	TYPE	D (FT.)	ONT (S.Y.)
517+00 TO 517+75	RT	2.0					ECB	2.0	133
519+46 TO 520+90	RT	2.0					TRM 1	2.0	275
521+00 TO 522+00	LT	2.0					ECB	2.0	180
521+38 TO 523+00	RT	2.0					TRM 1	2.0	303
522+00 TO 523+00	LT	2.0					ECB	2.0	180

ALL UTILITIES, UNLESS OTHERWISE NOTED, ARE CONSIDERED "OL C" PER KYTC DESIGN MANUAL SECTION HD-303.

RIGHT OF WAY PLANS

COOPER CHAPEL ROAD SECTION III
PLAN SHEET - MAINLINE
STA. 517+00 TO STA. 523+00

