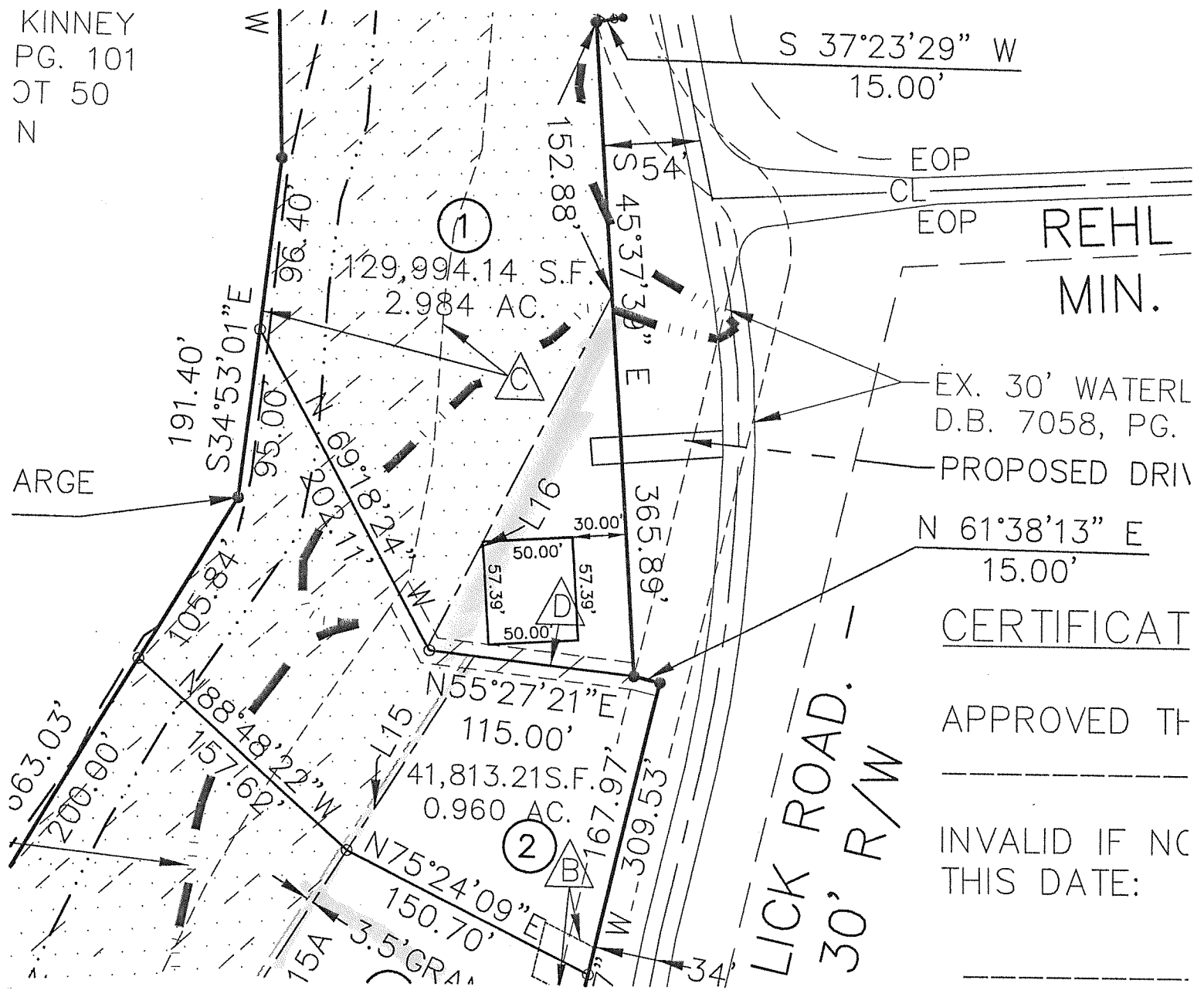


KINNEY  
PG. 101  
JT 50  
N



EOP  
EOP  
REHL  
MIN.  
EX. 30' WATERL  
D.B. 7058, PG.  
PROPOSED DRIV  
N 61°38'13" E  
15.00'  
CERTIFICAT  
APPROVED TH  
INVALID IF NC  
THIS DATE:

RECEIVED

FEB 29 2016  
PLANNING &  
DESIGN SERVICES

15 MINORPLAT 1142