



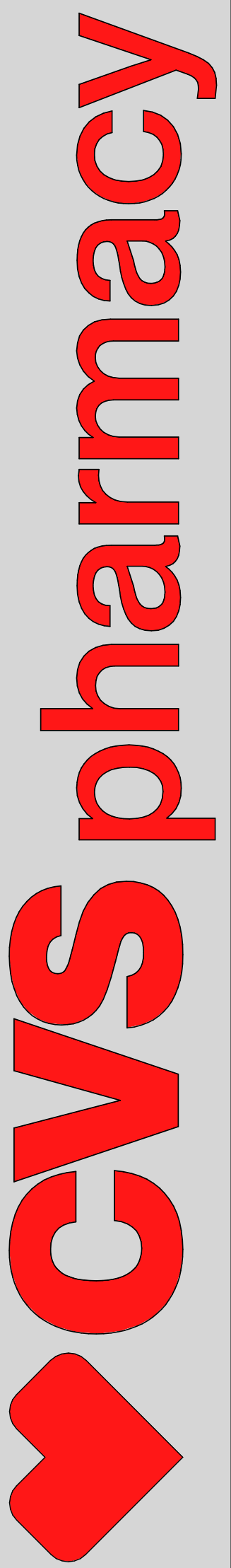
PERSPECTIVE 01 (FRONT ELEVATION)



PERSPECTIVE 02 (DRIVE-THRU)

NORR

CVS 06209, CS#79715 Louisville, KY (9K)(Preston Highway & Outer Loop)





1 FRONT ELEVATION (OUTER LOOP)
3/16" = 1'-0"

NICHIHA - VINTAGE WOOD COLOR: CEDAR
 ECHELON ADAMS GROUND FACE CMU - COLOR: MAPLE
 STO LOTUSAN SYSTEM COLOR: STO WHITE - 9433 80
 ECHELON ADAMS SPLIT FACE CMU - COLOR: 4308 OAK
 NICHIHA - VINTAGE WOOD COLOR: CEDAR



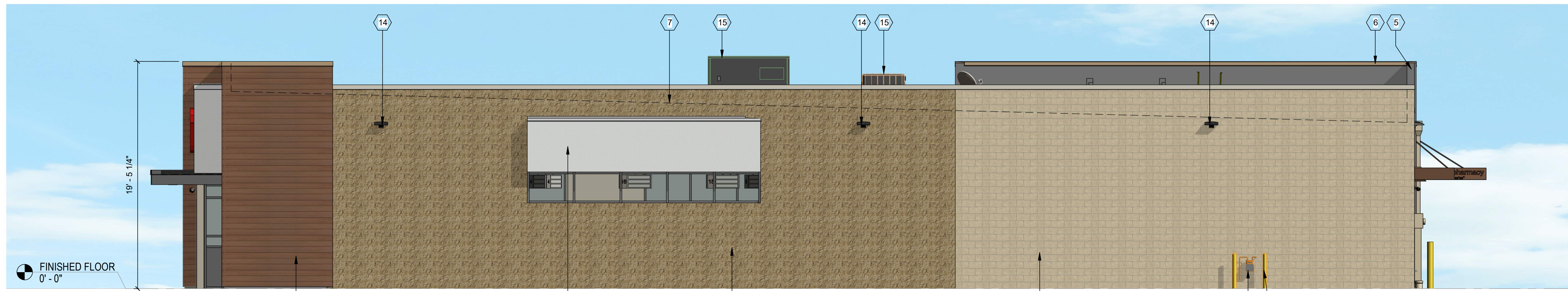
2 LEFT SIDE ELEVATION (PRESTON HIGHWAY)
3/16" = 1'-0"

NICHIHA - VINTAGE WOOD COLOR: CEDAR
 ECHELON ADAMS SPLIT FACE CMU - COLOR: 4308 OAK
 STO LOTUSAN SYSTEM COLOR: STO WHITE - 9433 80
 NICHIHA - VINTAGE WOOD COLOR: CEDAR



3 REAR ELEVATION
3/16" = 1'-0"

ECHELON ADAMS GROUND FACE CMU - COLOR: MAPLE
 ECHELON ADAMS SPLIT FACE CMU - COLOR: 4308 OAK
 NICHIHA - VINTAGE WOOD COLOR: CEDAR



4 RIGHT SIDE ELEVATION
3/16" = 1'-0"

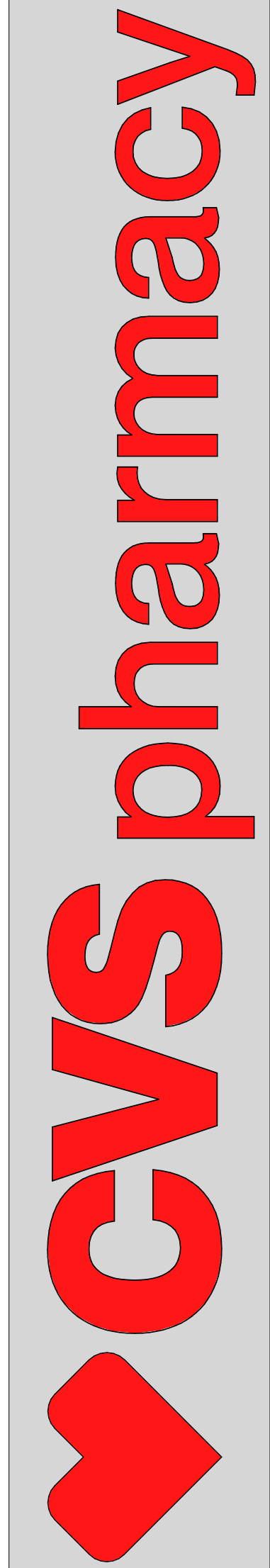
NICHIHA - VINTAGE WOOD COLOR: CEDAR
 STO LOTUSAN SYSTEM COLOR: STO WHITE - 9433 80
 ECHELON ADAMS SPLIT FACE CMU - COLOR: 4308 OAK
 ECHELON ADAMS GROUND FACE CMU - COLOR: MAPLE

EXTERIOR MATERIAL LEGEND



EXTERIOR KEYED NOTES	
#	Notes
1	ILLUMINATED SIGNAGE CENTERED VERTICALLY IN CANOPY
2	ILLUMINATED ANCILLARY SIGN
3	SMOOTH "GREY" CMU BLOCK TO BE USED BEHIND EXTERIOR FINISHES
4	SPACE SMOOTH PANEL JOINTS AS SHOWN IN ELEVATION TO MINIMIZE MATERIAL WASTE. REFER TO WALL SECTIONS FOR VERTICAL PANEL JOINT DETAIL, TYP.
5	RETURN MATERIAL @ ENDS OF PARAPETS, TYP.
6	PARAPET BEYOND
7	ROOF LINE
8	STORE HOURS PLAQUE
9	MIN. 6" HIGH ADDRESS SIGN ON CONTRASTING BACKGROUND (CONFIRM HEIGHT, LOCATION AND QUANTITY WITH LOCAL FIRE MARSHAL)
10	DOWNSPOUT & GUARD, RE: DOWNSPOUT GUARD AND C.O. DETAIL
11	OVERFLOW SCUPPER
12	DOWNSPOUT NOZZLE
13	DRIVE THRU DOWNSPOUT
14	EXTERIOR WALL PACK LIGHT, RE: ELEC
15	LINE OF RTU BEYOND
16	ELECTRIC METERING CABINET, RE: ELEC
17	GAS METER LOCATION, RE: PLUMBING
18	BOLLARD RE: SPECIFICATIONS
19	RAIN HOOD
20	PHARMACY ADVERTISING DISPLAY BOARD, GC TO PURCHASE AND INSTALL, RE: ELEC
21	PAINT J-BOX TO MATCH
22	PROVIDE KNOX BOX WHERE REQUIRED BY JURISDICTION PURCHASED FROM LOCAL FIRE DEPARTMENT. MOUNT PER FIRE DEPARTMENT REQUIREMENTS ON WALL ADJACENT TO ENTRANCE

CVS 06209, CS#79715 Louisville, KY (9K)(Preston Highway & Outer Loop)



NORR