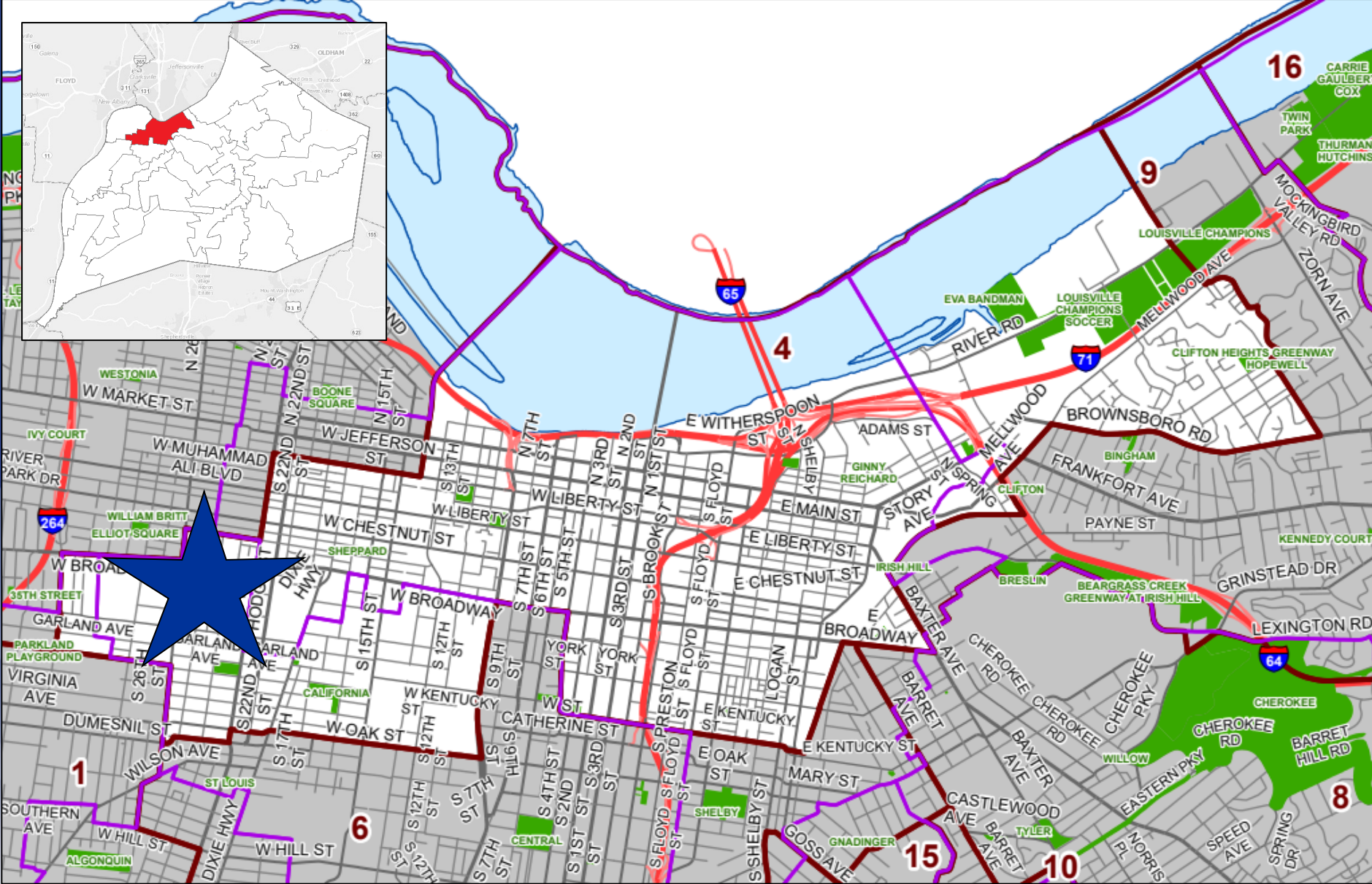
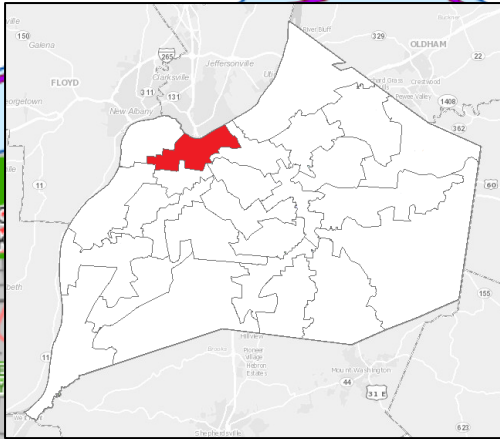


22-STRCLOSURE-0026 MSD MAPLE STREET PARK CLOSURE



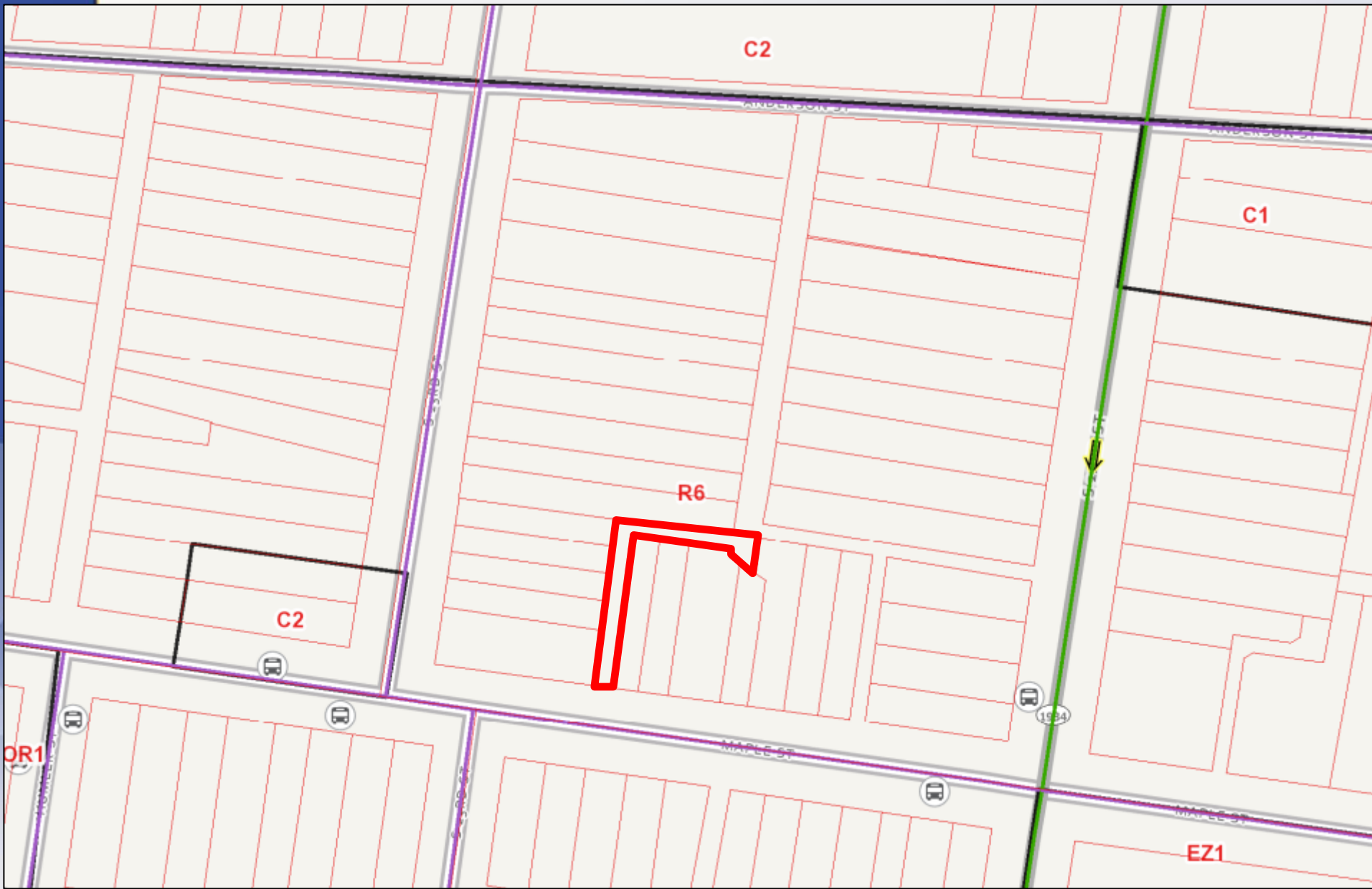
Planning & Zoning Committee
February 21, 2023



The logo for Louisville Metro, featuring a stylized sun or flower icon above the word "Louisville" in a serif font, with "METRO" in a smaller font above it.

Unnamed Alley
District 4 - Jecorey Arthur

22-STRCLOSURE-0026



Requests

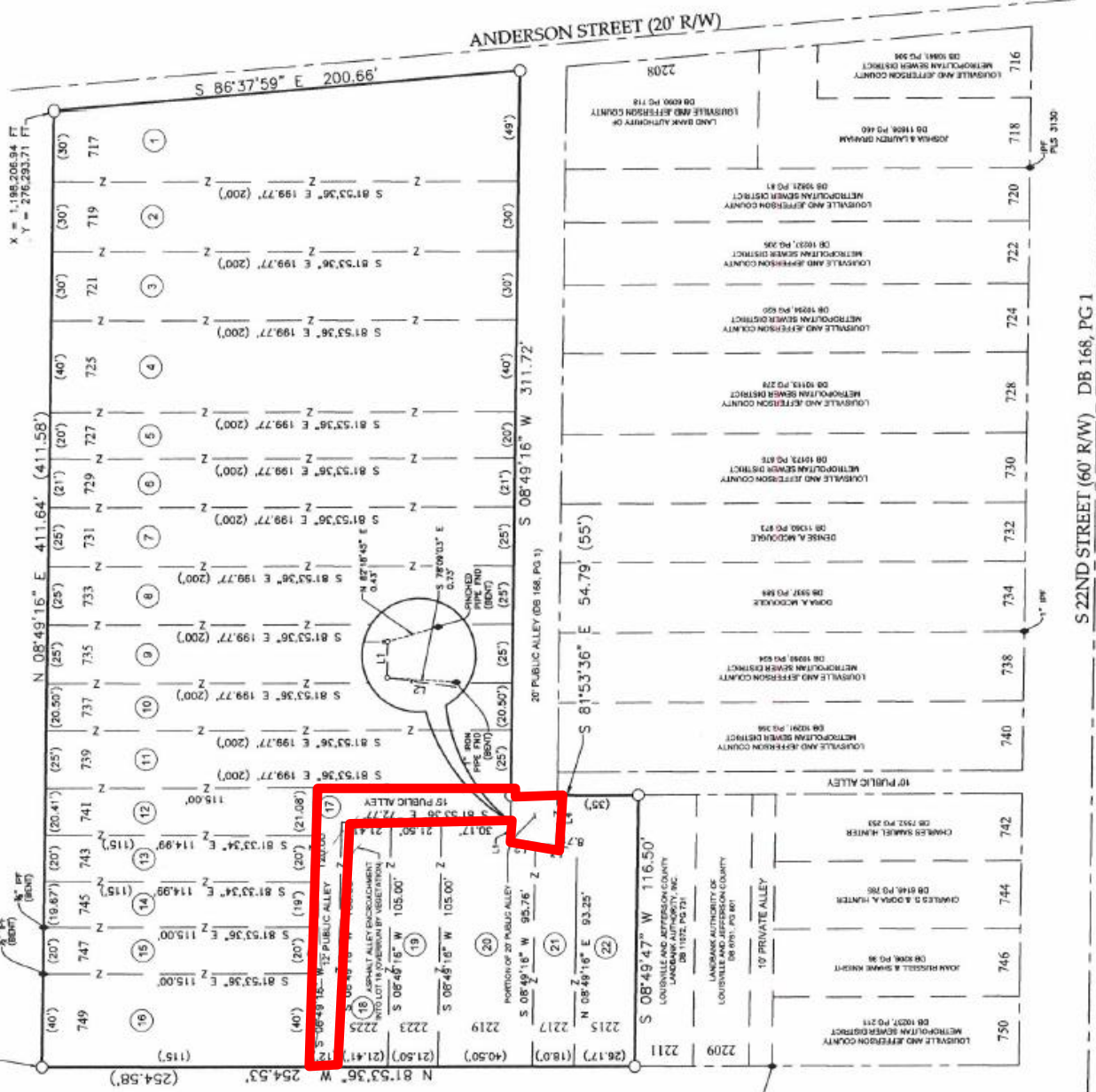
- **Closure of Public Right of Way for unnamed, unimproved alley (22-STRCLOSURE-0026)**

Case Summary

- Closure of unimproved alley to the rear of property
- Associated with Louisville MSD property acquisitions related to local stormwater flooding
- Property will be used for development of Maple Street park project

POINT OF BEGINNING
 X = 1,195,143.82 FT
 Y = 275,886.34 FT

S 23RD STREET (60' R/W) DB 168, PG 1



X = 1,195,205.94 FT
 Y = 276,233.71 FT

MAPLE STREET (60' R/W) DB 384, PG 638

S 22ND STREET (60' R/W) DB 168, PG 1

LOW OR
 1/2\"/>

Public Meetings

- LD&T meeting on 1/12/2023
- Planning Commission public hearing on 1/19/2023
 - No one spoke in opposition.
 - Motion to recommend approval of the alley closure by a vote of 7-0-1.