

# West Louisville Food Port

CLIENT  
SEED CAPITAL KENTUCKY  
300 YORK STREET  
LOUISVILLE, KY 40203  
TEL: 502.588.5555

DESIGN ARCHITECT  
OMAXIMO ARCHITECTURE P.C.  
120 JARVIS STREET, SUITE 1208  
NEW YORK, NY 10014  
TEL: 212.337.0710 FAX: 212.337.0711

EXECUTIVE ARCHITECT  
GIRN ARCHITECTS, INC.  
608 WEST MAIN STREET  
LOUISVILLE, KY 40202  
TEL: 502.583.0700

STRUCTURAL ENGINEER  
SENER, CAMPBELL AND ASSOCIATES, INC.  
1311 S. THIRD STREET  
LOUISVILLE, KY 40203  
TEL: 502.638.3968

MEP/FFS ENGINEER  
CMTA CONSULTING ENGINEERS, INC.  
10411 MEETING STREET  
PROSPERITY, KY 40075  
TEL: 502.326.3085

GEOTECHNICAL ENGINEER  
GEM ENGINEERING, INC.  
1700 WATTSBORO WAY  
LOUISVILLE, KY 40266  
TEL: 502.463.7150 FAX: 502.463.8190

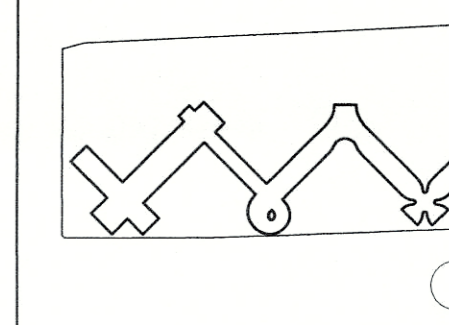
CIVIL ENGINEER  
SARAK, WILSON & LINGO, INC.  
608 SOUTH 3RD STREET  
LOUISVILLE, KY 40202  
TEL: 502.584.8271 FAX: 502.584.8252

LANDSCAPE ARCHITECT  
STORES LANDSCAPE URBANISM  
427 W BROADWAY #304  
BOSTON, MA 02127  
TEL: 617.464.1140 FAX: 617.464.1140

LIGHTING DESIGNER  
TILLOTSON DESIGN ASSOCIATES  
40 NORTH ST #700  
NEW YORK, NY 10013  
TEL: 212.675.7760 FAX: 212.675.7826

KITCHEN CONSULTANT  
JOBY SMITH & ASSOCIATES  
8114 CHESTERVILLE WEST CHESTER ROAD  
WEST CHESTER, OH 40986  
TEL: 513.779.7976 FAX: 212.675.7826

NO.	ISSUE DATE	COMMENTS
01	26 JUNE 2015	100% SD



30TH STREET

KEY PLAN

NOT FOR BID  
NOT FOR CONSTRUCTION

STAMP

100% SD

STATUS

20010080-01 36"x24" OMA

PROJ. NO. FORMAT DRAWN BY

1/16"=1'-0" 6/26/2015

SCALE DATE

BAR D - EXTERIOR ELEVATION

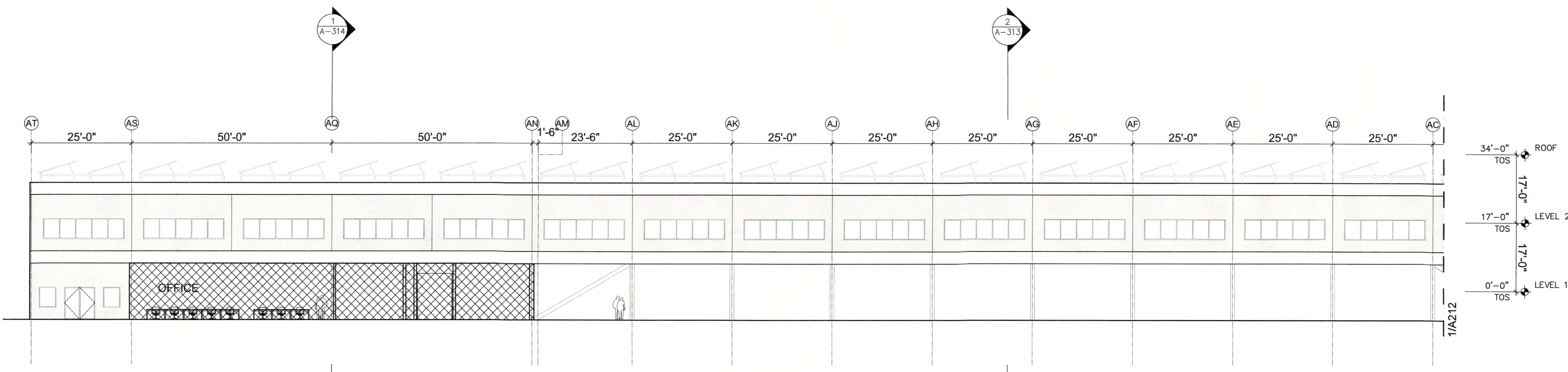
DRAWING TITLE

**A213**

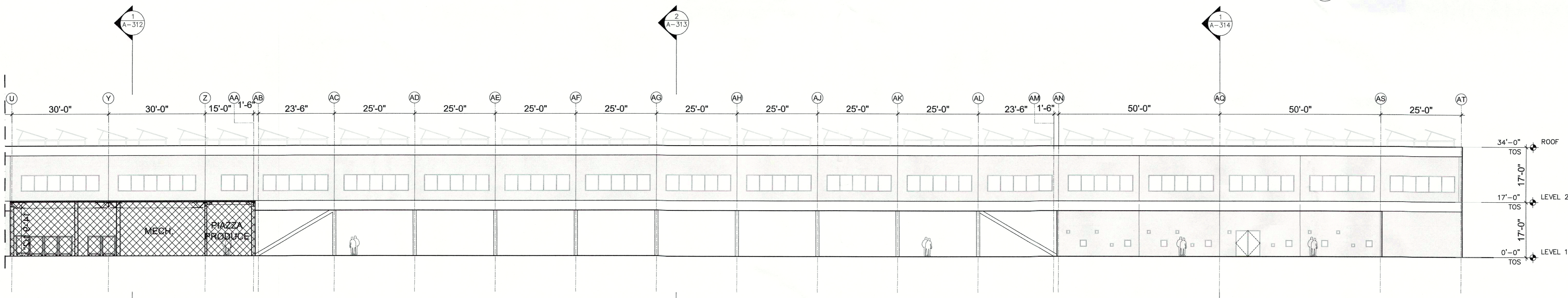
DRAWING NUMBER

LEGEND

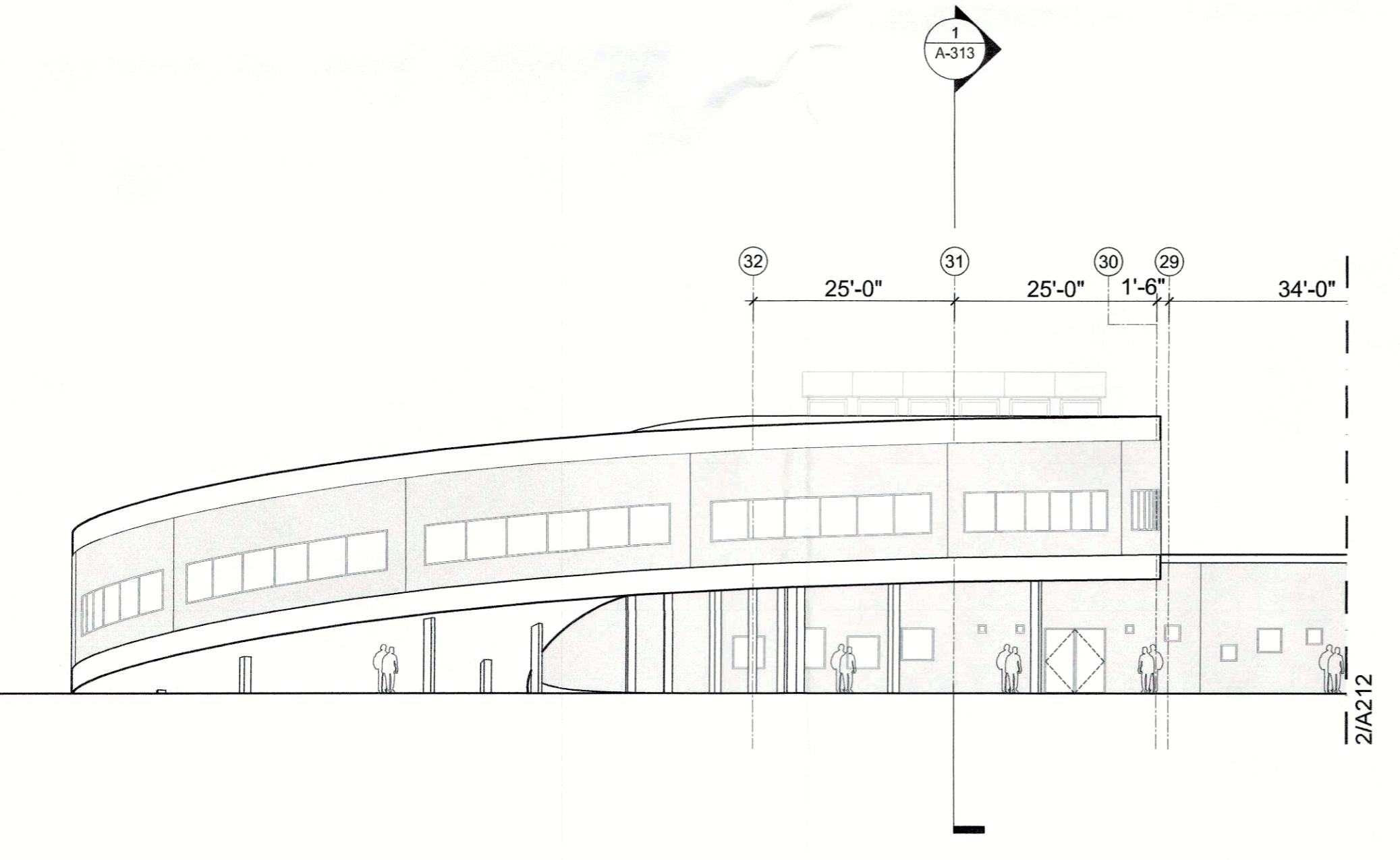
Tilt-up concrete



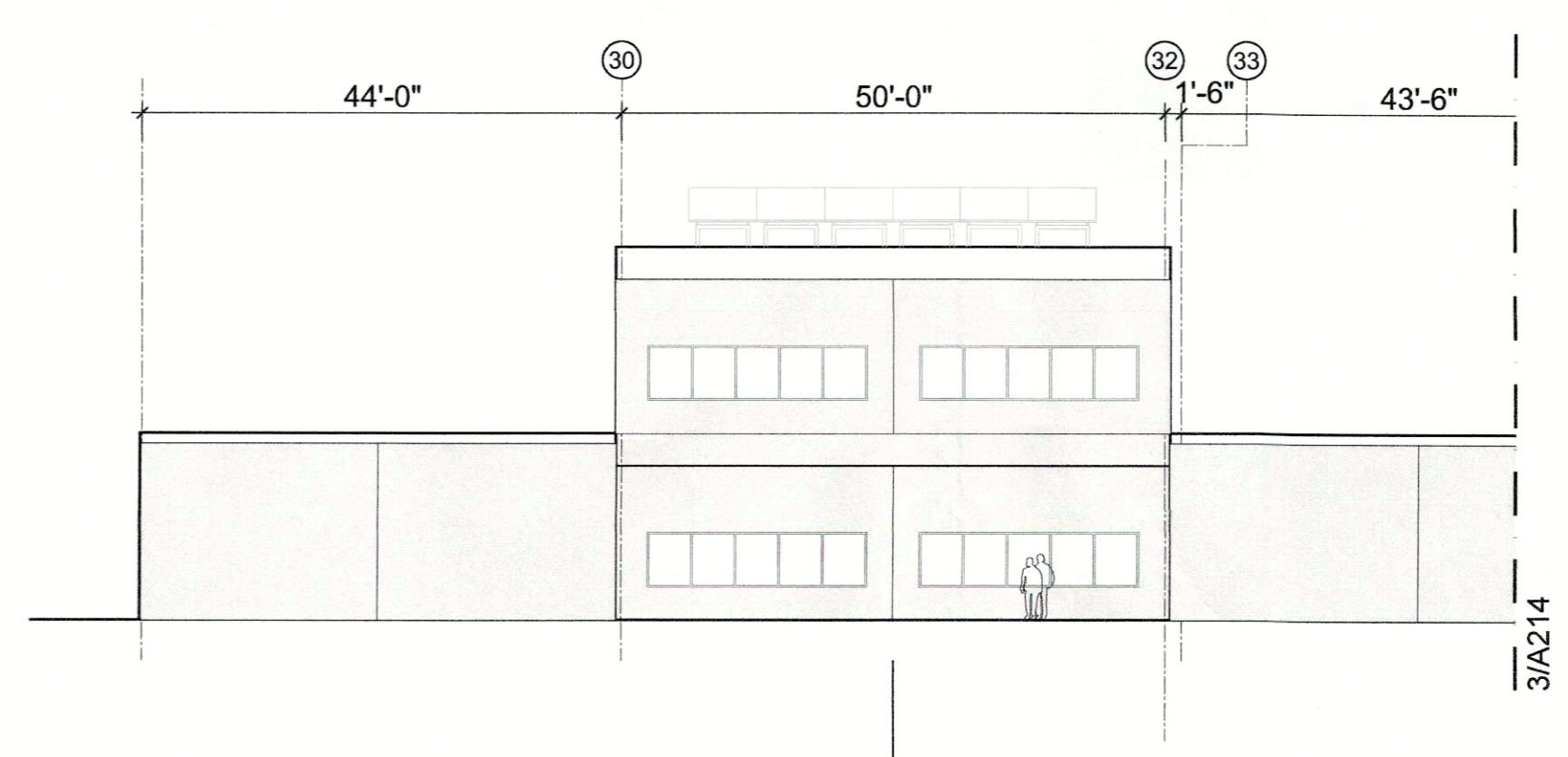
**4 BAR D - EAST ELEVATION**  
SCALE 1/16"=1'-0"



**3 BAR D - WEST ELEVATION**  
SCALE 1/16"=1'-0"



**2 BAR D - EAST ELEVATION**  
SCALE 1/16"=1'-0"



**1 BAR D - SOUTH ELEVATION**  
SCALE 1/16"=1'-0"

RECEIVED  
JUL 13 2015  
PLANNING &  
DESIGN SERVICES