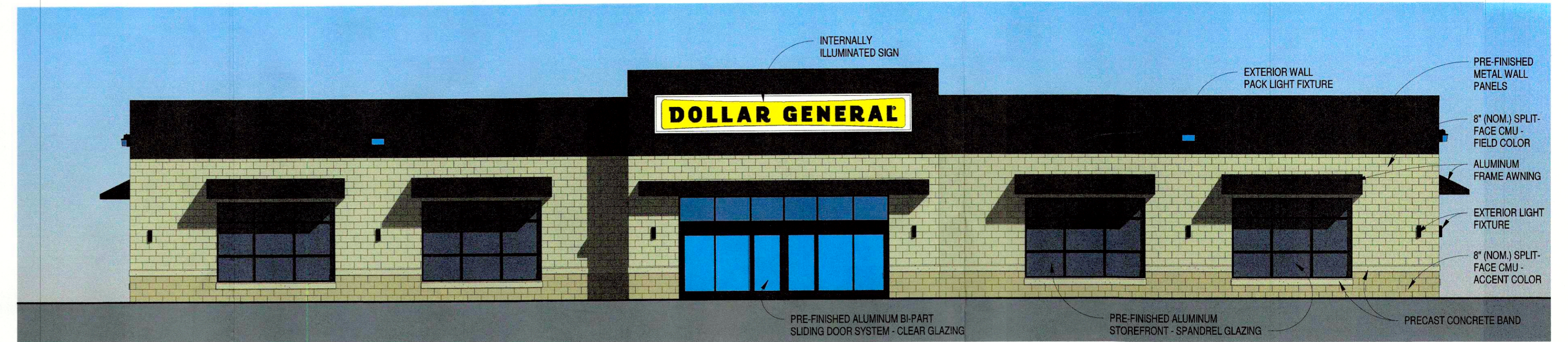
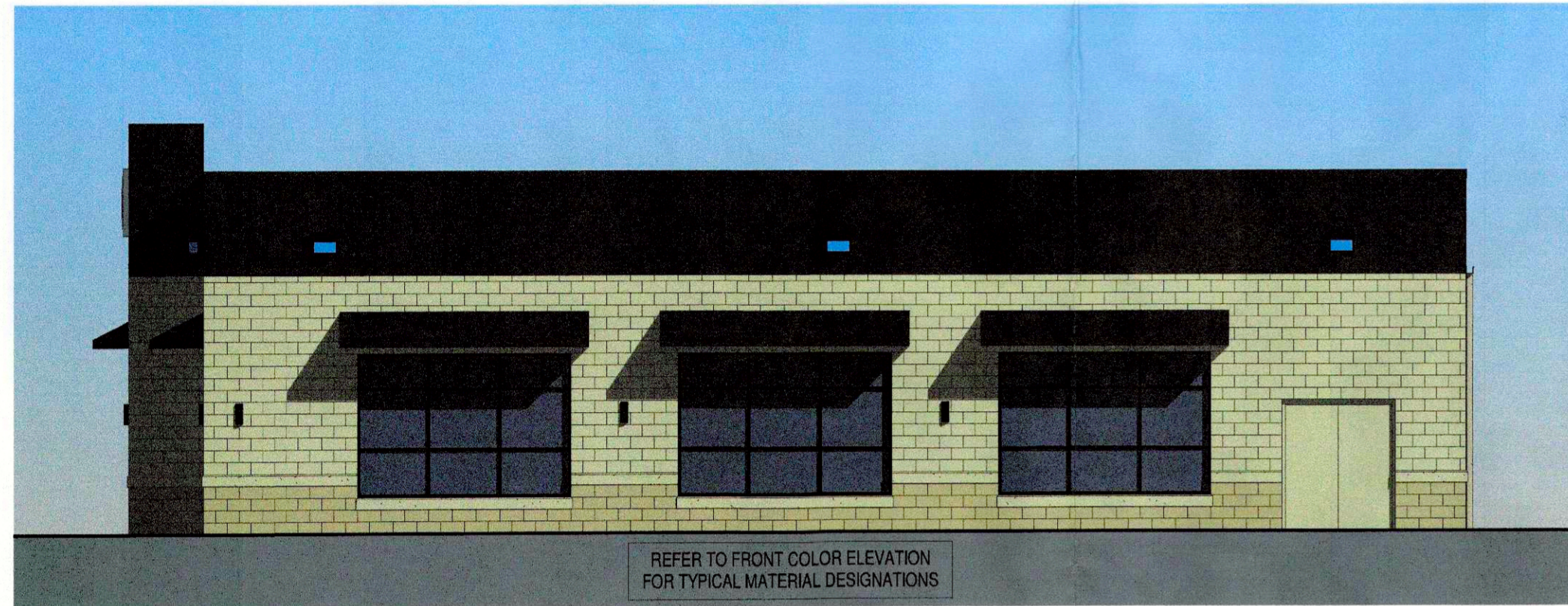


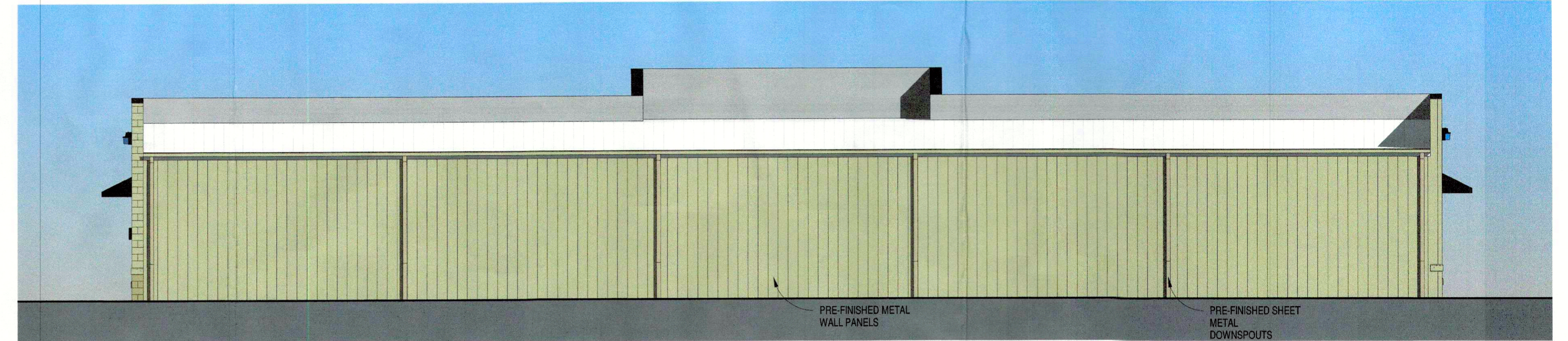
COLOR LEFT SIDE ELEVATION
1/8" = 1'-0"



COLOR FRONT ELEVATION
1/8" = 1'-0"



COLOR RIGHT SIDE ELEVATION
1/8" = 1'-0"



COLOR REAR ELEVATION
1/8" = 1'-0"



3D PERSPECTIVE

RECEIVED

JAN 21 2020

PLANNING & DESIGN SERVICES

DOLLAR GENERAL

7701 SMYRNA PARKWAY

LOUISVILLE, KENTUCKY

SEWELL AND SEWELL
ARCHITECTS
20 - WAWER - 0008