



LPF Mission & Vision

The Louisville Parks Foundation ensures our public parks and recreational facilities with the greatest need receive the greatest investment.

Our Vision is a city of parks where everyone has access to quality greenspace.



Louisville Parks Foundation Projects



📍 WYANDOTTE PARK



📍 CALIFORNIA PARK



LANNAN PARK 📍



📍 RUSSELL LEE PARK



In 2021, the Louisville Parks Foundation, in collaboration with Louisville Metro will launch a city-wide park equitable investment study to create a roadmap for future public park investments. This comprehensive and data-driven analysis will ensure public parks and neighborhoods with the greatest needs are prioritized for the earliest investments.



- City parks encourage active lifestyles and reduce health costs
- City parks strengthen local economies and create job opportunities
- City parks make cities more resilient
- City parks increase community engagement and reduce crime
- City parks help clean the air and improve public health
- City parks are a tool for cities to achieve their equity goals

Investing in Equitable Urban Park Systems

As Louisville responds to the public health crises of racial injustice and COVID-19, parks and greenspaces must be considered vital civic infrastructure in long-term recovery efforts to foster a more resilient city for ALL Louisvillians.

The City Parks Alliance commissioned the Urban Institute to lead research on funding models and their equity consideration in US cities of varying sizes.

The research identified 7 cities leading this research, top among them were Pittsburgh and Minneapolis.





Jayne Miller Consulting

Jayne brings 35+ years experience in leadership in parks and recreational facilities with a special focus on diversity, equity, and inclusion. She led both the Minneapolis and Pittsburgh initiatives.

The Parks for All Team



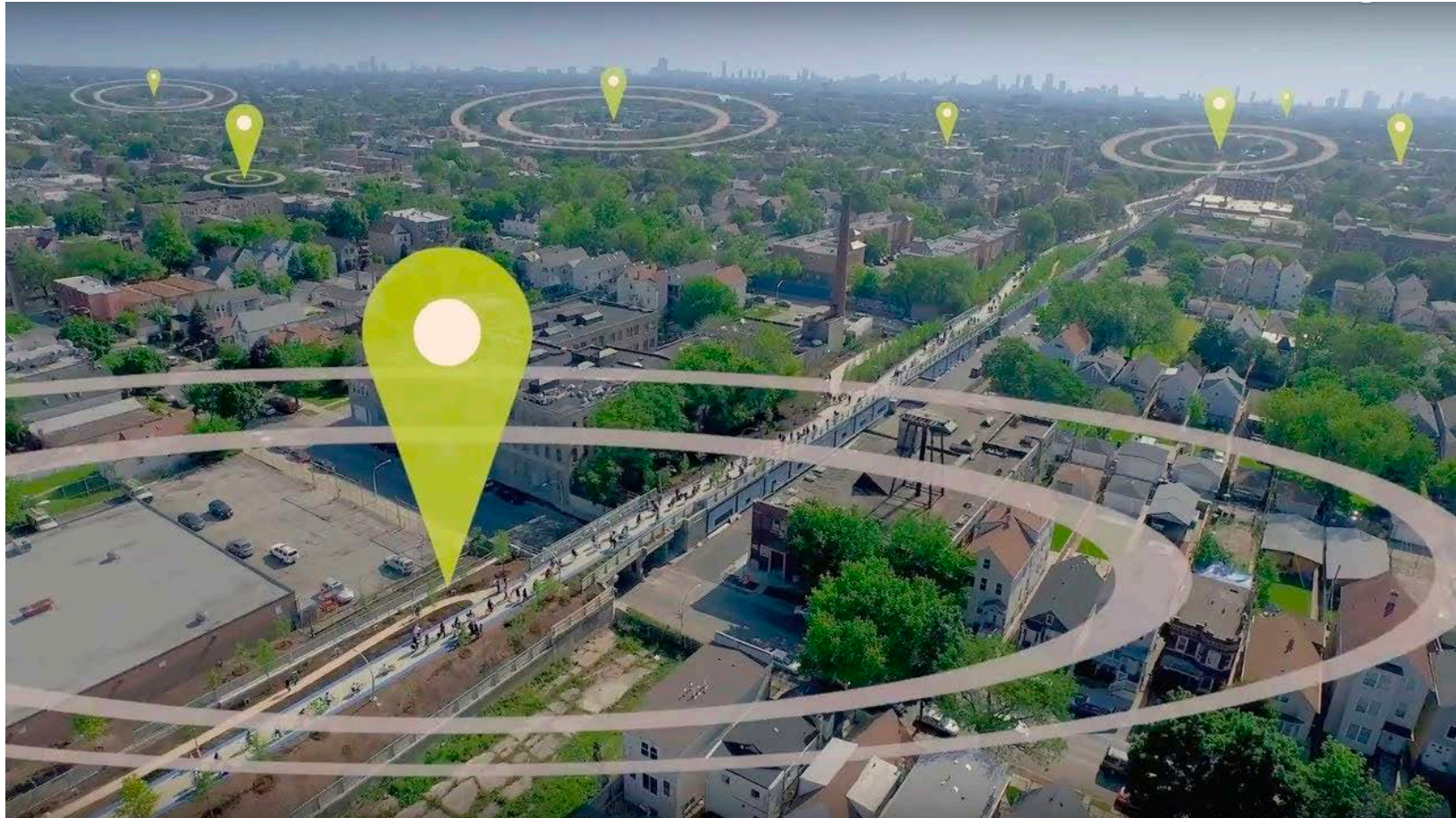
A full-service management consulting and planning firm, PROS Consulting is a national leader in innovative solutions for sustainable parks and recreation systems.

Interface Studio is an inventive and imaginative planning and urban design practice. Their extensive experience includes developing Pittsburgh's data-driven methodology to guide equitable investments in their public parks.



Collect Demographics in 10 minute “Walk Shed”

- Family Poverty and racially concentrated areas of poverty
- Age and Health Data (Obesity, Diabetes, Asthma, Anxiety, Depression)
- Vacancy Rates
- Air and Water Quality
- Crimes Against Persons



Collect Park Need Data

The study will examine the maintenance, rehabilitation, and capital needs of the entire park system, as well as the needs of each park individually.

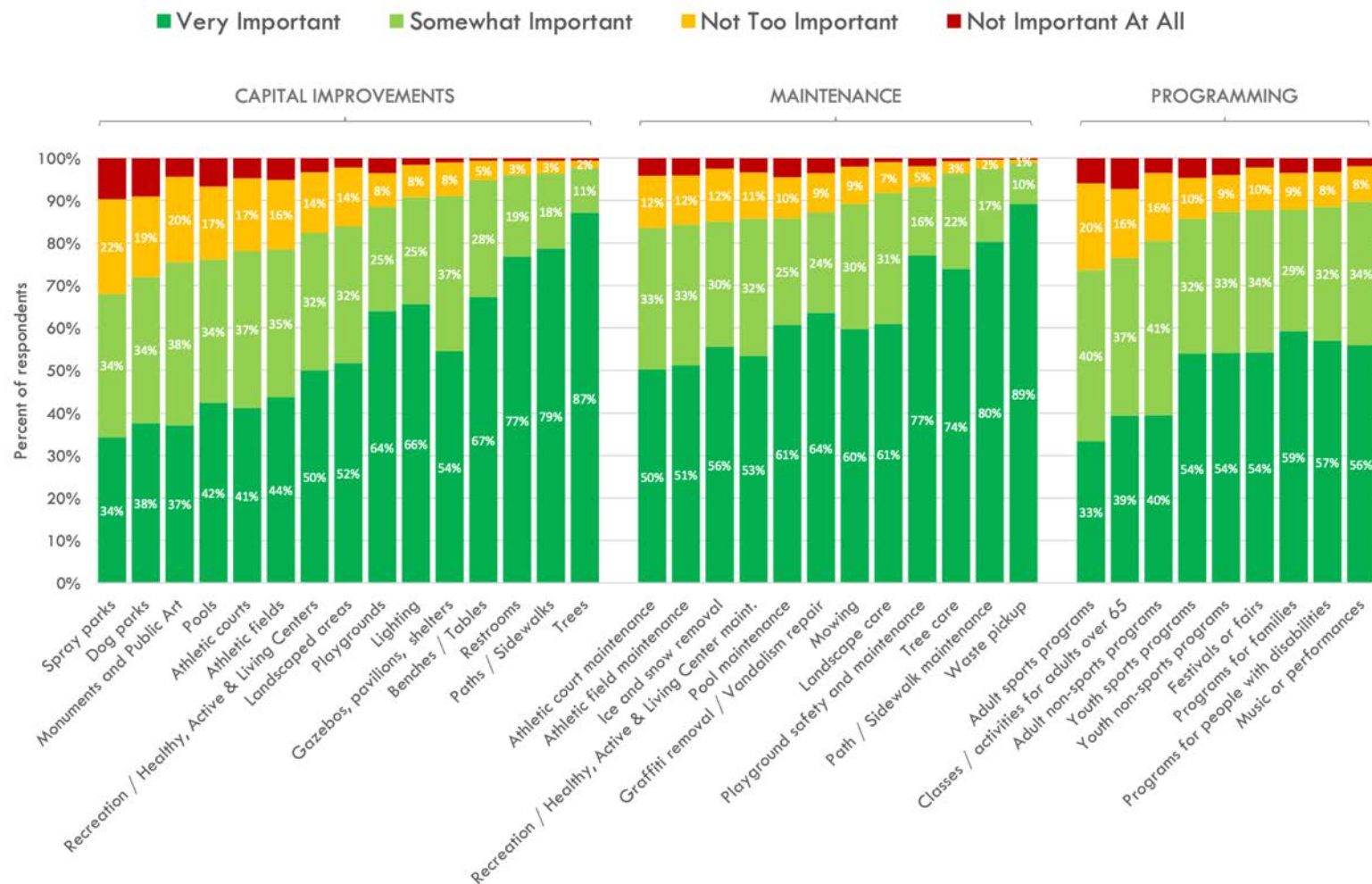
Recreation services, funding, and community need data will be examined neighborhood by neighborhood to ensure funding is distributed equitably and prioritizes parks and neighborhoods with the greatest need.



**LOUISVILLE
PARKS
AND RECREATION**

Pittsburgh Parks Conservancy Survey

SURVEY: IMPORTANCE OF ALL ELEMENTS



**Pittsburgh
Parks
Conservancy**



Status of Project:

- Team to conduct study secured
- Louisville Metro Departments committed to assisting with data collection, including Louisville Parks and Recreation, Center for Health Equity, APCD, OMB, etc.
- Currently pursuing funding to launch initiative



Maple Street Park Project

Catalyst for Health and Wellbeing in
West Louisville

Maple Street Flooding

- Presidential disaster declaration; \$9.75 million FEMA grant authorized for acquisition and demolition of 128 flood-prone homes
- 118 homes acquired by MSD and permanently conserved as greenspace to prevent residential flooding
- Additional area land acquired by Land Bank



The Need for Green

Almost two-thirds of the California Neighborhood is at very high risk for heat island effect, resulting in high energy costs, increased air pollution, lower water quality, and health problems.

Just 1% of land is dedicated to parks and open space.



THE TRUST FOR PUBLIC LAND

 = 50 people



Parks for people of color are **half the size** and serve nearly **five times more** people per acre as those for majority-white populations.

Nearby Parks & Schools



- 1 Shawnee Golf Course
- 2 Shawnee Park
- 3 Chickasaw Park
- 4 Portland Park
- 5 Boone Square Park
- 6 Elliot Park
- 7 Sheppard Park
- 8 Victory Park
- 9 California Park
- 10 Future: The Track on Ali
- 1 MLK Jr. Elementary
- 2 Academy at Shawnee
- 3 Young Elementary
- 4 Portland Elementary
- 5 Atkinson Elementary
- 6 Western Middle
- 7 Byck Elementary
- 8 Coleridge Taylor Elementary
- 9 Central High School
- 10 Roosevelt Perry Elementary
- 11 Brandeis Elementay
- 12 West End School
- 13 Foster Academy
- 14 John F. Kennedy Montessori
- 15 Maupin Elementary
- 16 Johnson Traditional Middle Sc
- 17 Wheatley Elementary
- 18 J. Graham Brown School
- 19 Presentation Academy
- 20 Meyzeek Middle School
- 21 Englehard Elementary

Views of the Area





Center For Neighborhoods

**Facilitating a Community-Driven
Equitable Development Plan**



Playground





Picnic Shelters



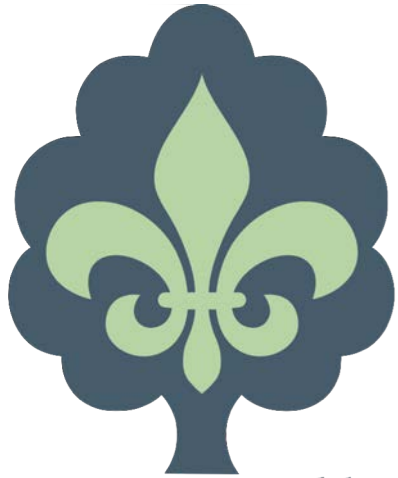
Walking Paths



Next Phase of the Journey



- Pursue funding support
- Finalize governance plan
- Launch community engagement & stewardship
- Planning and design



**Louisville
Parks
Foundation**

Questions?

Brooke Pardue

www.lpfky.gov

bpardue@LouisvilleParksFoundation.org

(502) 314-9690