

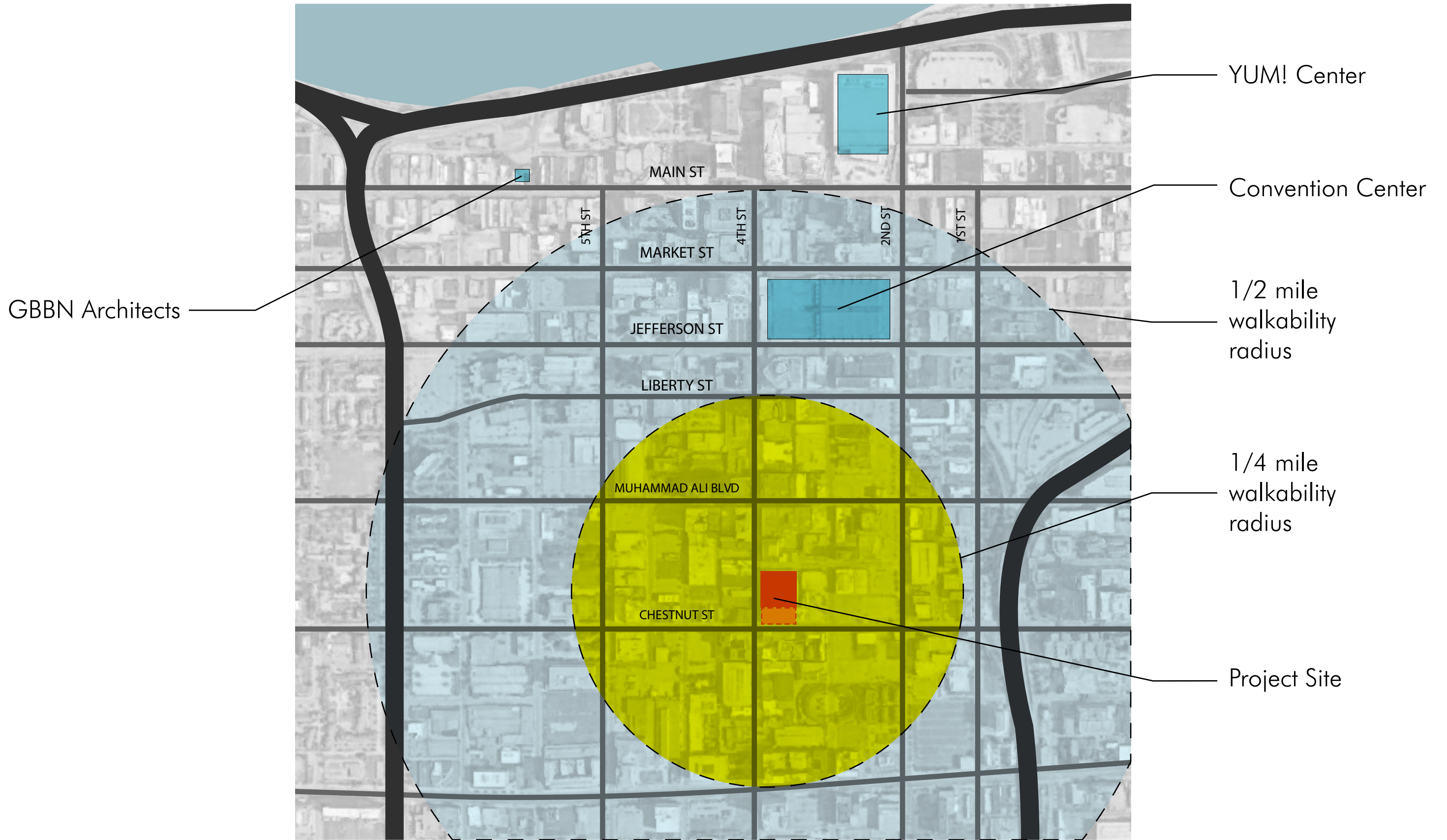


565 4<sup>th</sup> ST

DDRO PRESENTATION  
2016.09.14

 CAPITAL  
INVESTMENT  
GROUP, INC.

**GBBN**  
architects





Existing & Proposed  
565 4th Street

DDRO PRESENTATION  
2016.09.14

CAPITAL  
INVESTMENT  
GROUP, INC.

**GBBN**  
architects

Create a unique, upscale Residence -bringing more life & vitality to the area

Create an engaging and safe pedestrian experience

Create a design appropriate in scale, rich in materiality, and contextually appropriate

**4th Street**  
*Primary Pedestrian Way*

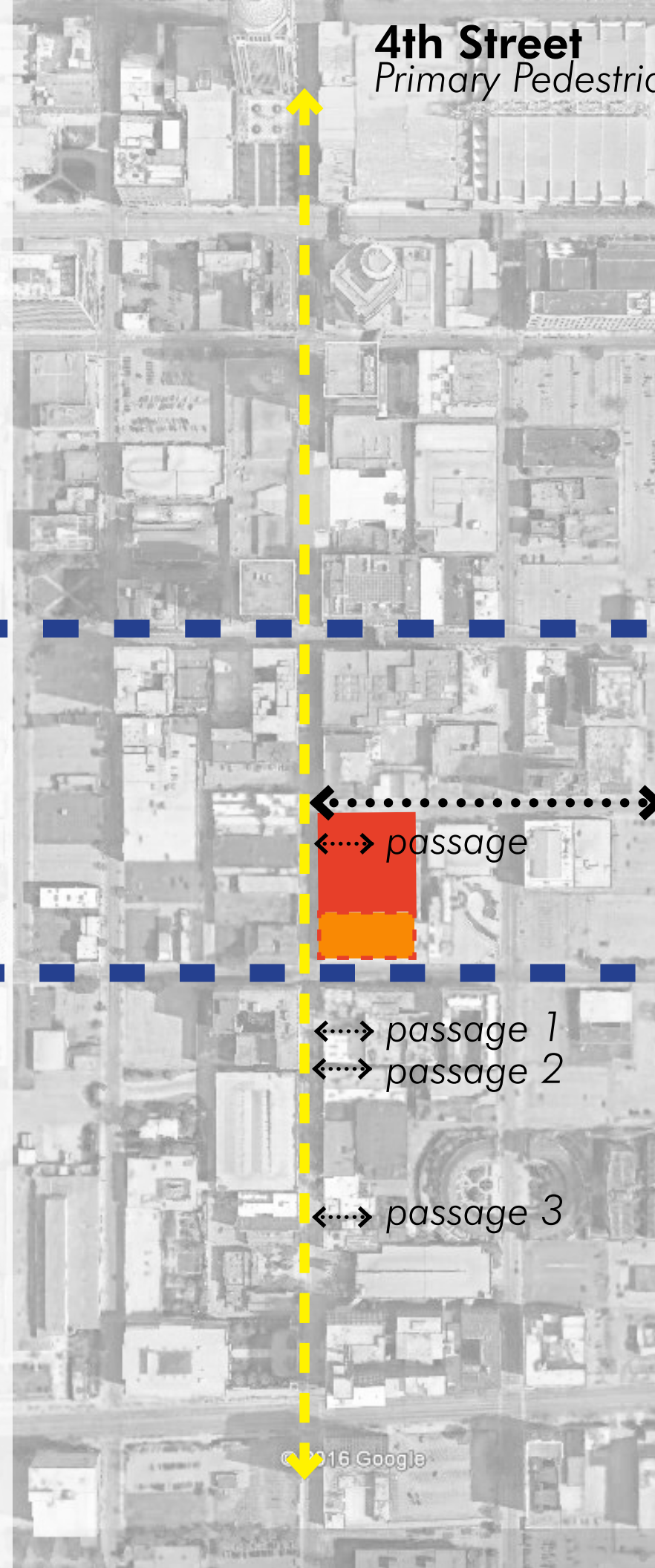


**Muhammad Ali Boulevard**  
*Primary Vehicular Way*

**Guthrie Street**  
*Connector / Pedestrian Way*



**West Chestnut Street**  
*Primary Vehicular Way*



passage 1



passage 2



passage 3



passage

passage 1

passage 2

passage 3

**STREET TYPES**  
Project Vicinity Map  
565 4th Street

DDRO PRESENTATION  
2016.09.14

**CAPITAL INVESTMENT GROUP, INC.**

**GBBN**  
architects



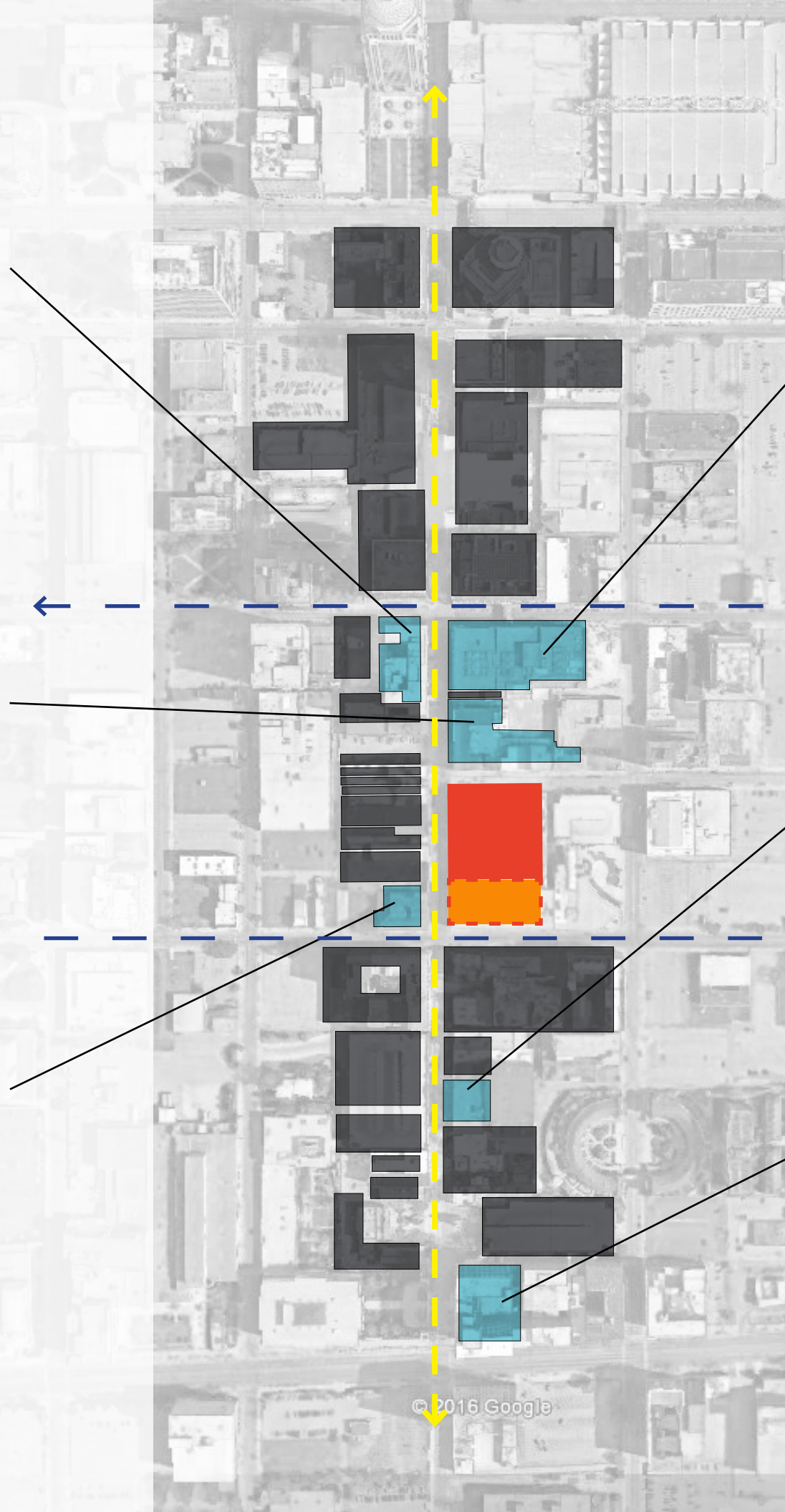
Seelbach Hotel



Speed Building



572 S.4th St



Embassy Suites



Louisville Palace Theatre



The Brown

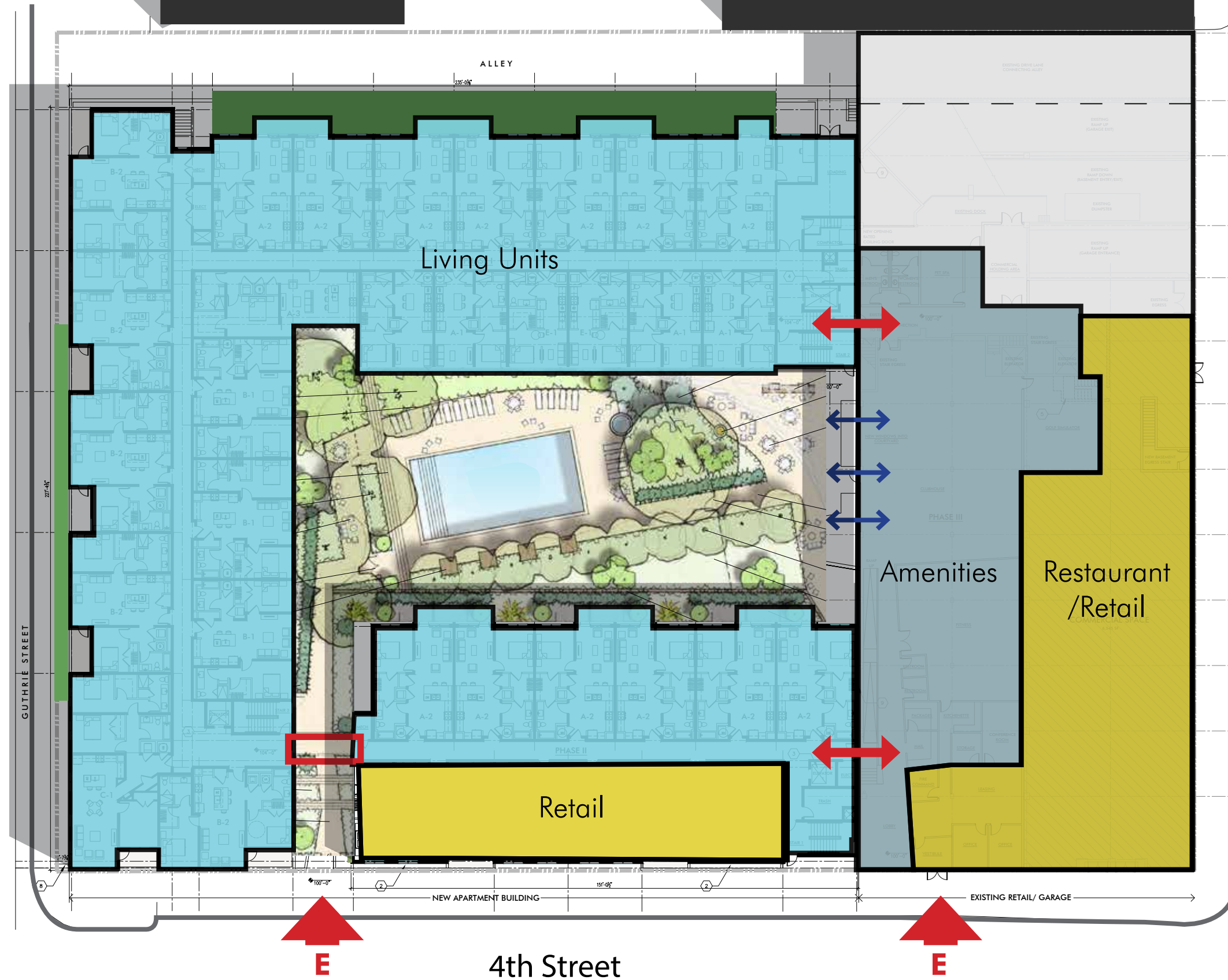
AREA LANDMARKS  
Project Vicinity Map  
565 4th Street

DDRO PRESENTATION  
2016.09.14

CAPITAL  
INVESTMENT  
GROUP, INC.

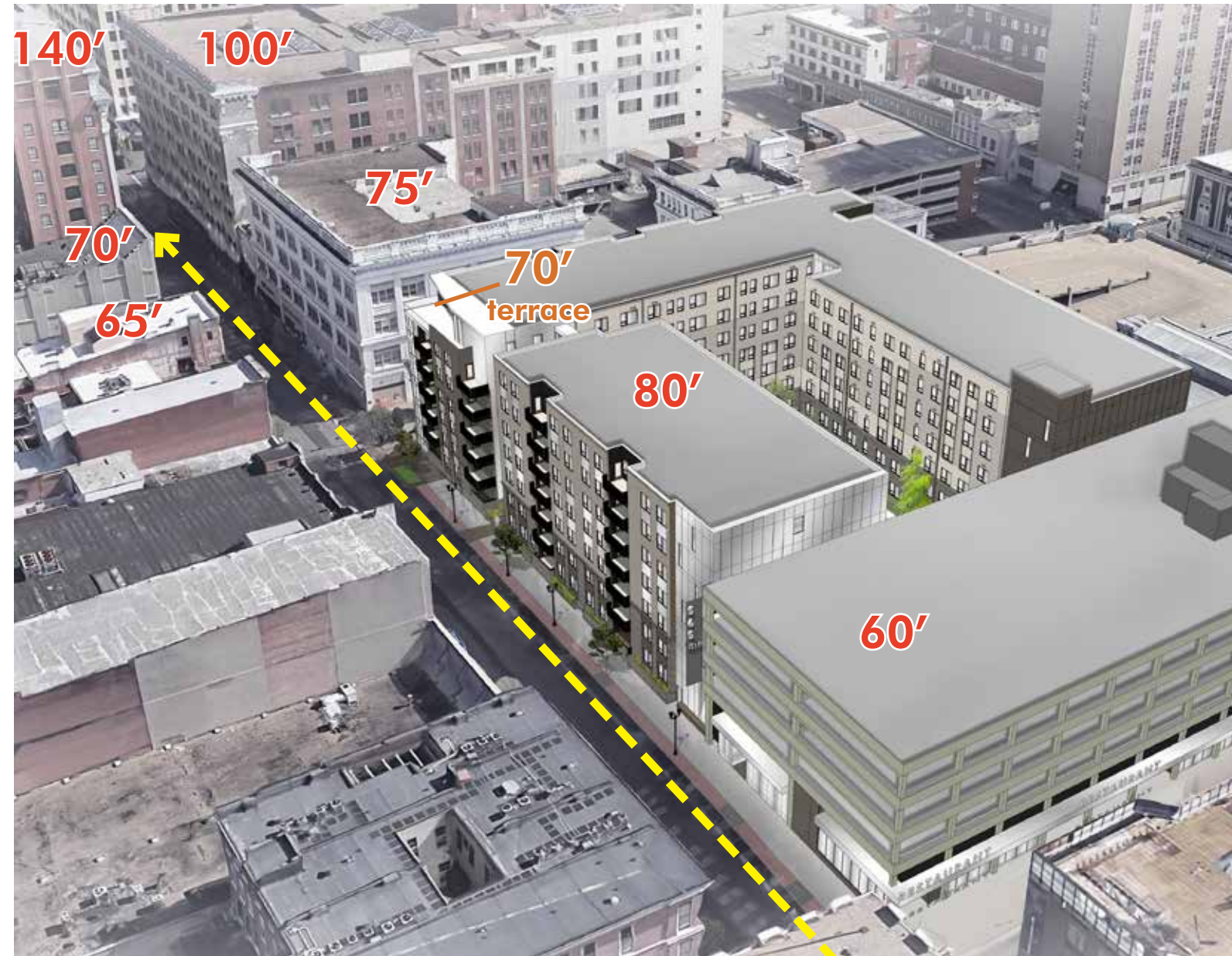
GBBN  
architects

Guthrie Street



4th & Guthrie  
looking Southwest

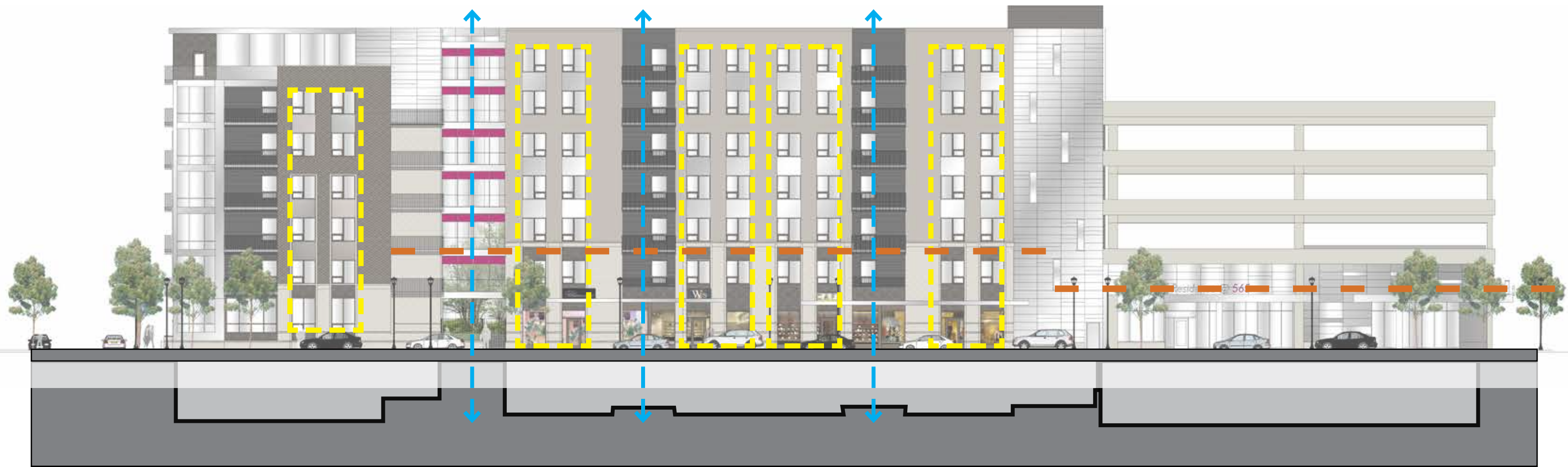
4th & Chestnut  
looking Northeast



4th Street

4th Street





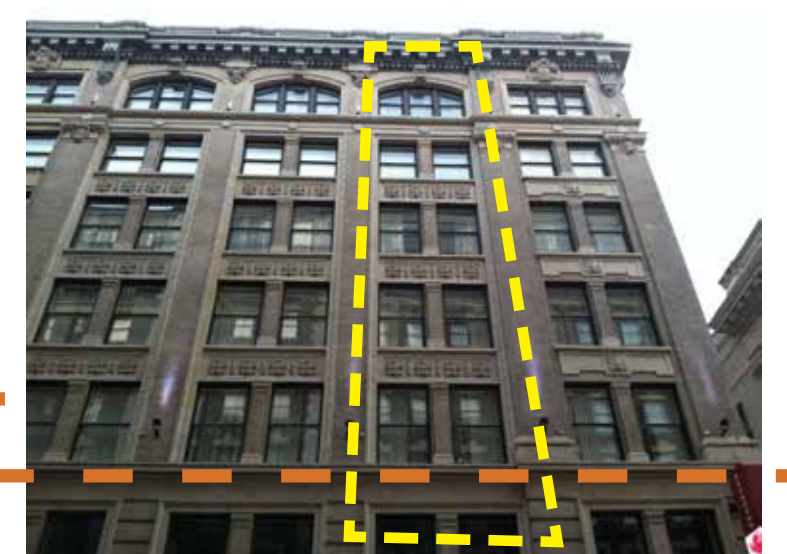
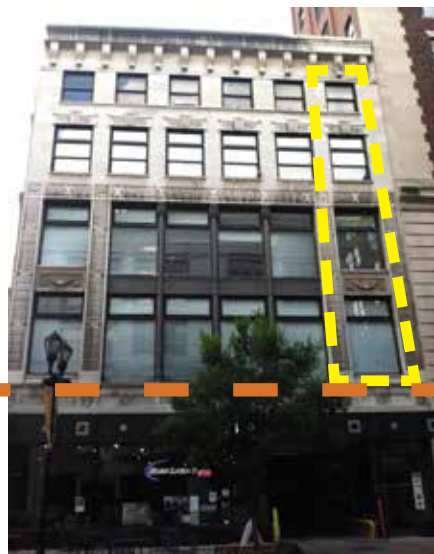
520 S. 4th St.

Seelbach Hotel

Speed Building

572 S. 4th Street

Embassy Suites



Ornamental metal and/or masonry details

Brick or stone masonry & distinct base condition

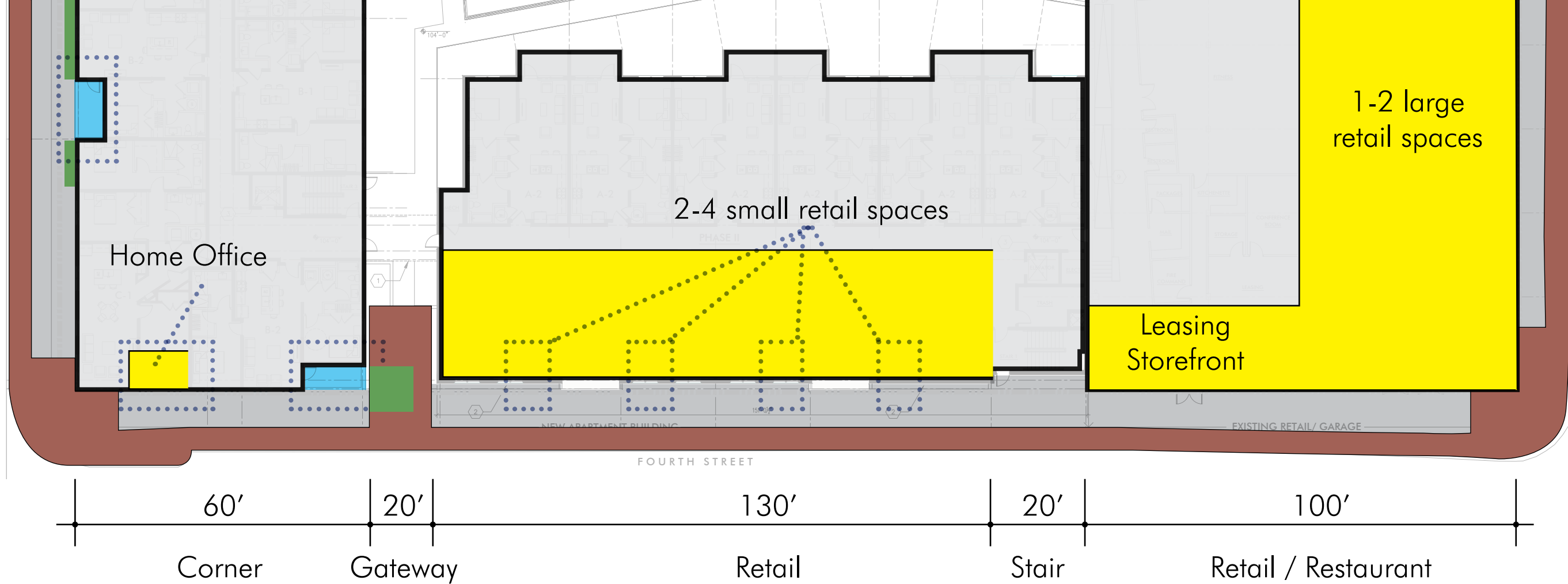
Vertical window groupings with detail infill panels

Context  
565 4th Street

DDRO PRESENTATION  
2016.09.14

CAPITAL  
INVESTMENT  
GROUP, INC.

GBN  
architects



Urban



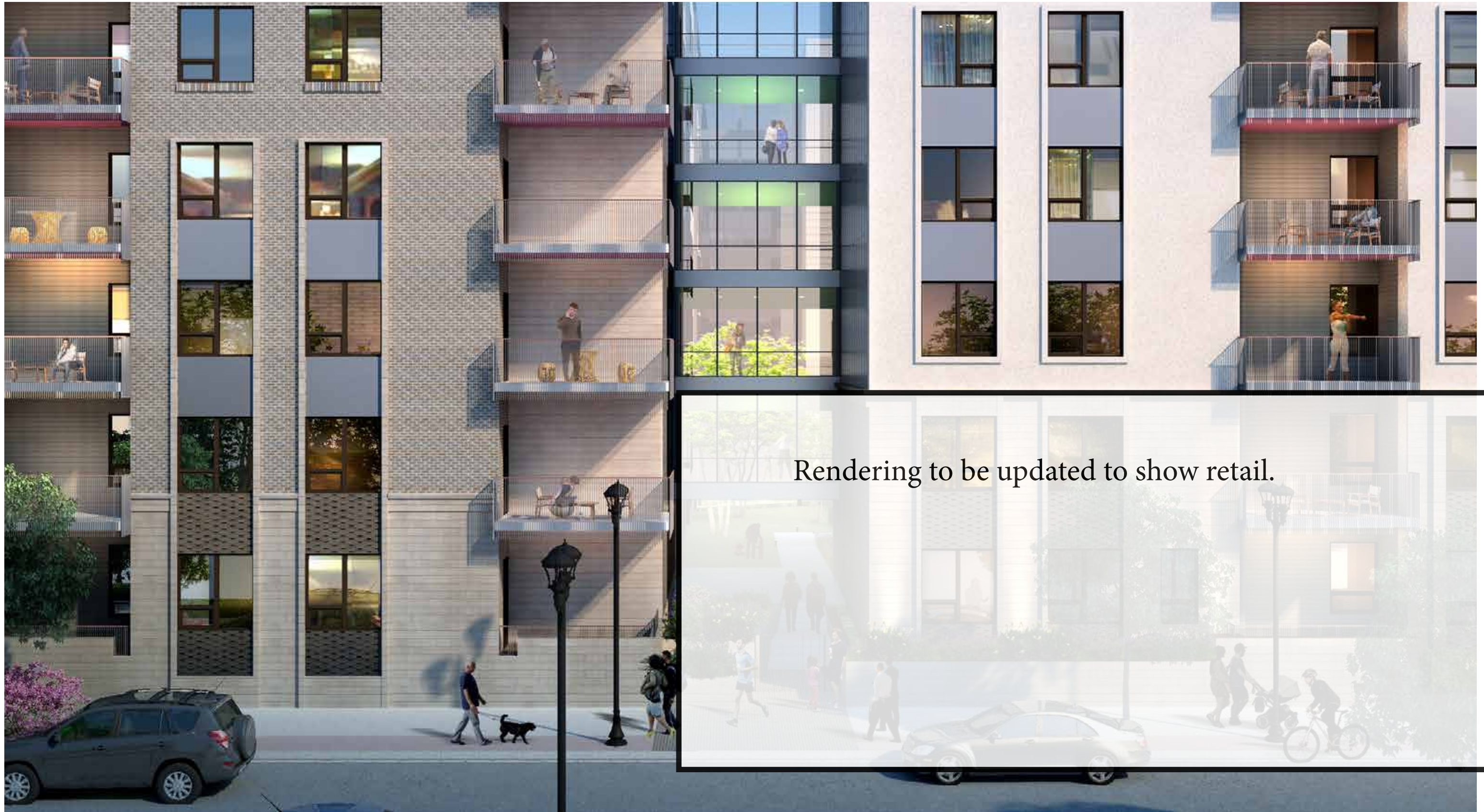
Green



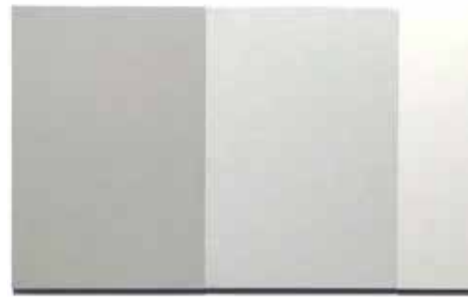
Inviting



Comfortable



Rendering to be updated to show retail.



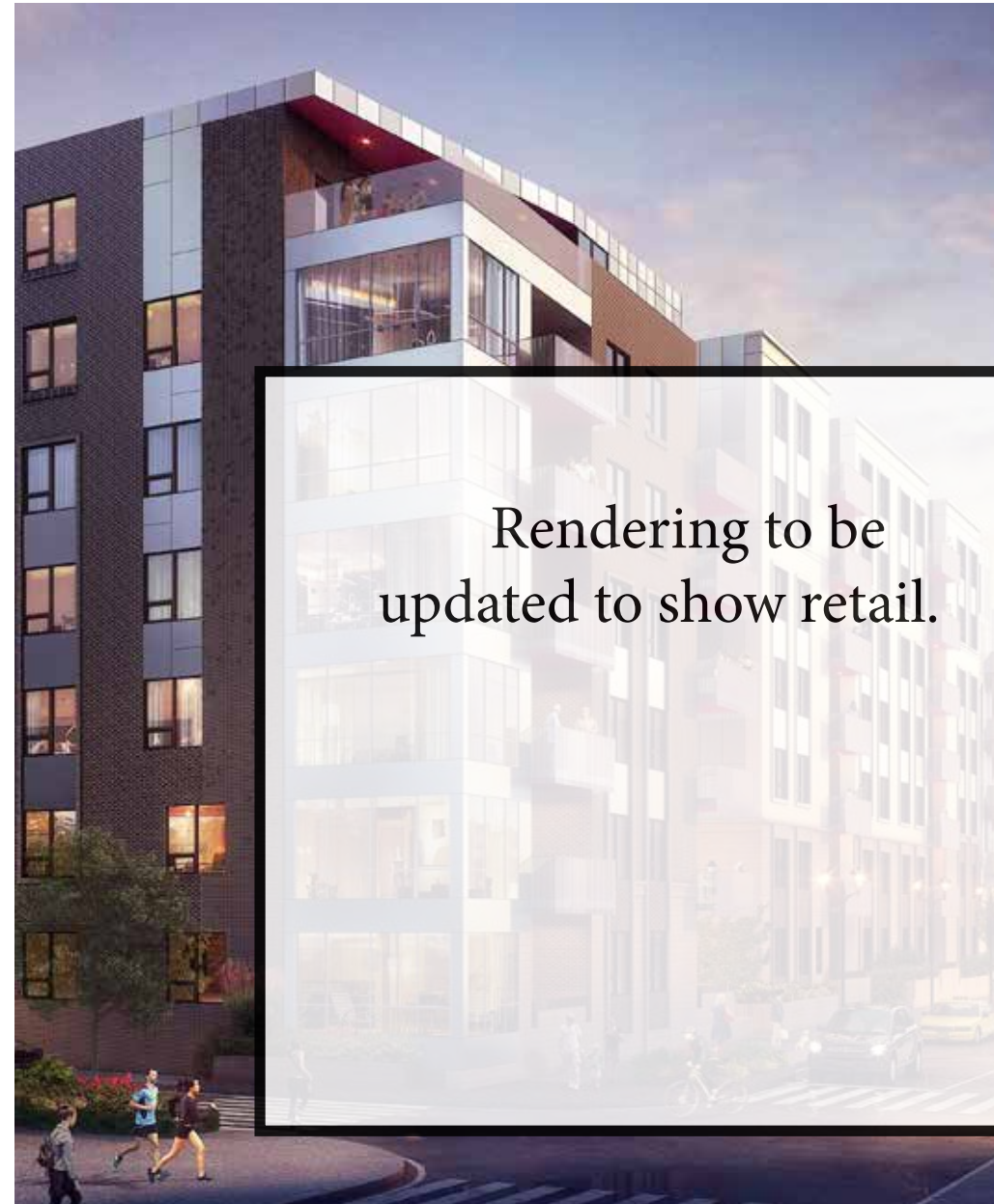
PROFILED METAL PANEL  
(COURTYARD)



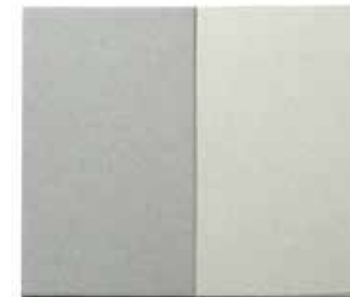
BRICK



LIGHT STONE 1 LIGHT STONE 2



Rendering to be updated to show retail.



METALLIC PANEL  
7



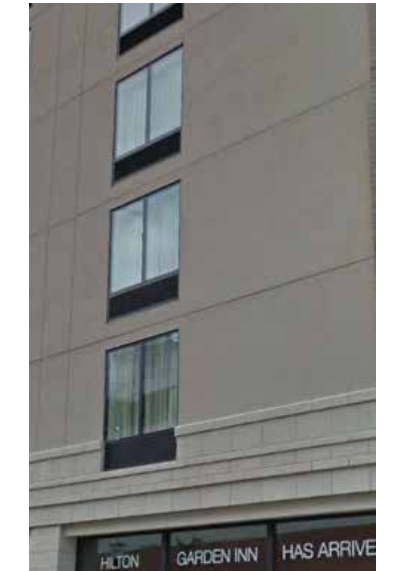
BALCONY ACCENT  
8



EIFS PRODUCT



METALLIC EIFS ACCENT  
6



WINDOWS  
4



FIBER CEMENT COLOR  
3



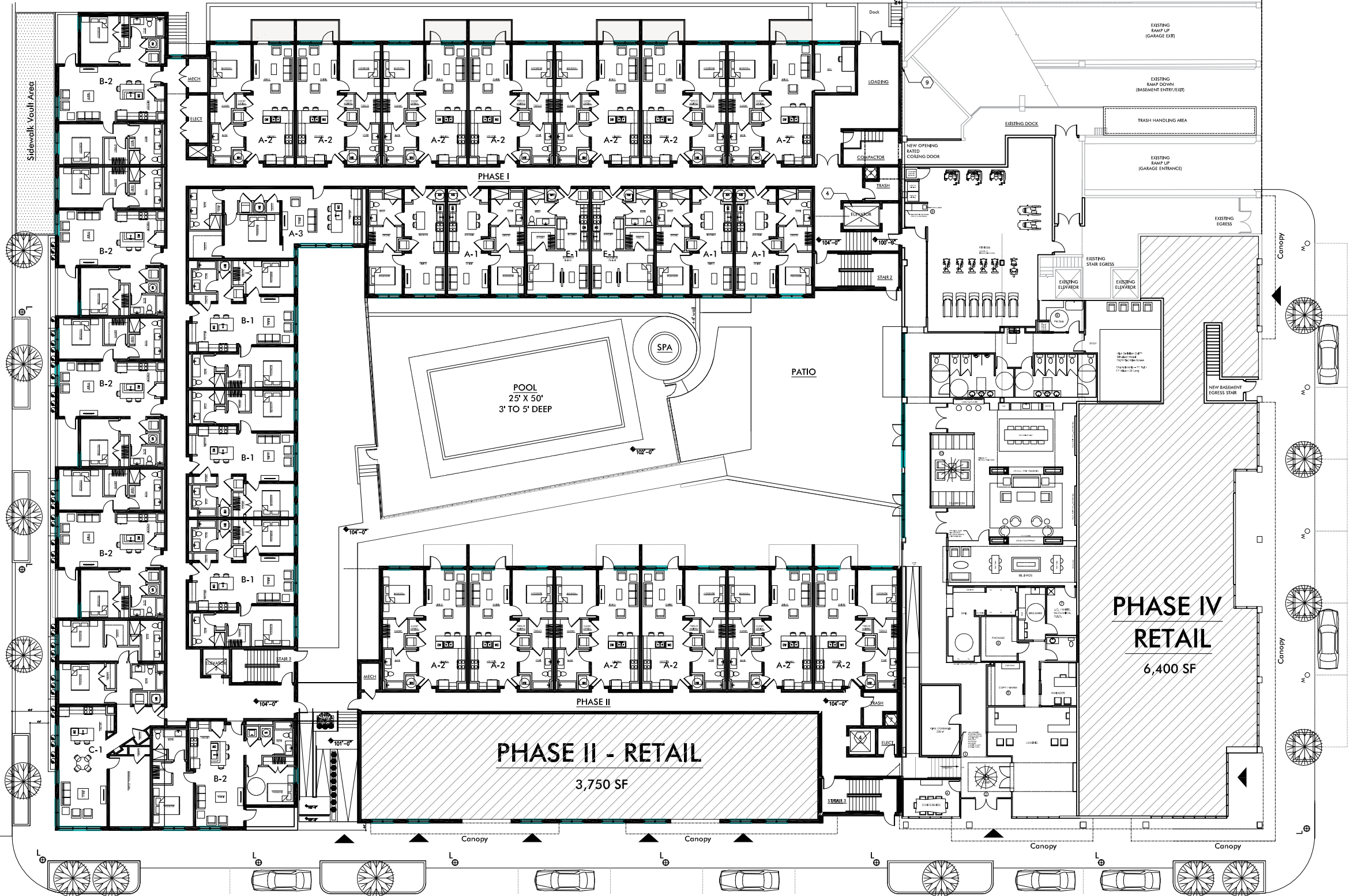
FIBER CEMENT PRODUCT



GUTHRIE STREET

CHESTNUT STREET

ALLEY



FOURTH STREET

Sheet Title  
 Sheet Subtitle  
 565 4th Street

DDRO PRESENTATION  
 2016.09.14

CAPITAL  
 INVESTMENT  
 GROUP, INC.

GBN  
 architects



\*Detail Brick is a modification of Flemish Bond

### 4TH STREET ELEVATION

565 4th Street

DDRO PRESENTATION  
2016.09.14





\*Detail Brick is a modification of Flemish Bond

## CHESTNUT STREET ELEVATION

565 4th Street

DDRO PRESENTATION  
2016.09.14

CAPITAL  
INVESTMENT  
GROUP, INC.

**GBBN**  
architects



\*Detail Brick is a modification of Flemish Bond.

## GUTHRIE STREET ELEVATION

565 4th Street

DDRO PRESENTATION  
2016.09.14

**CAPITAL  
INVESTMENT  
GROUP, INC.**

**GBBN**  
architects



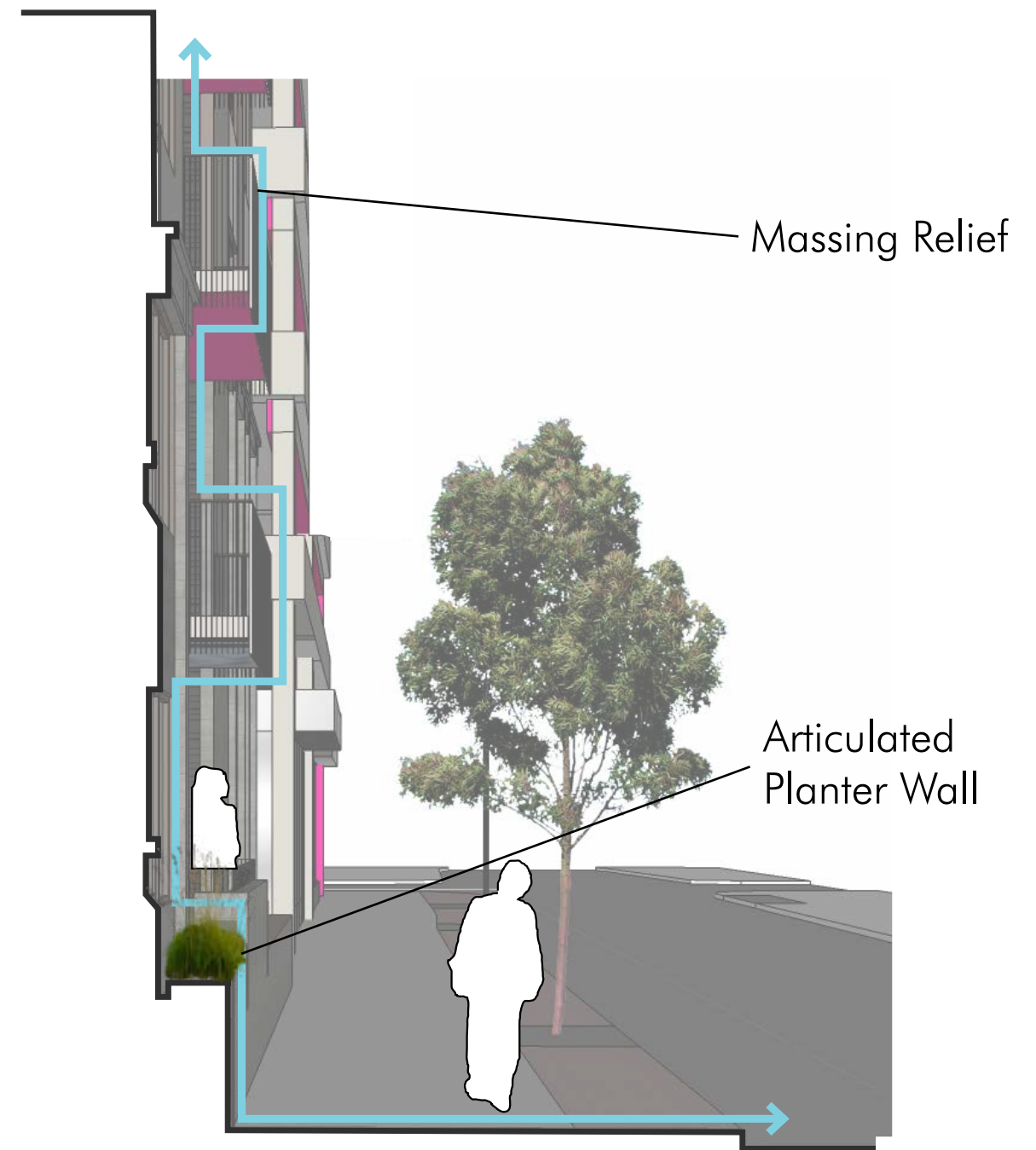
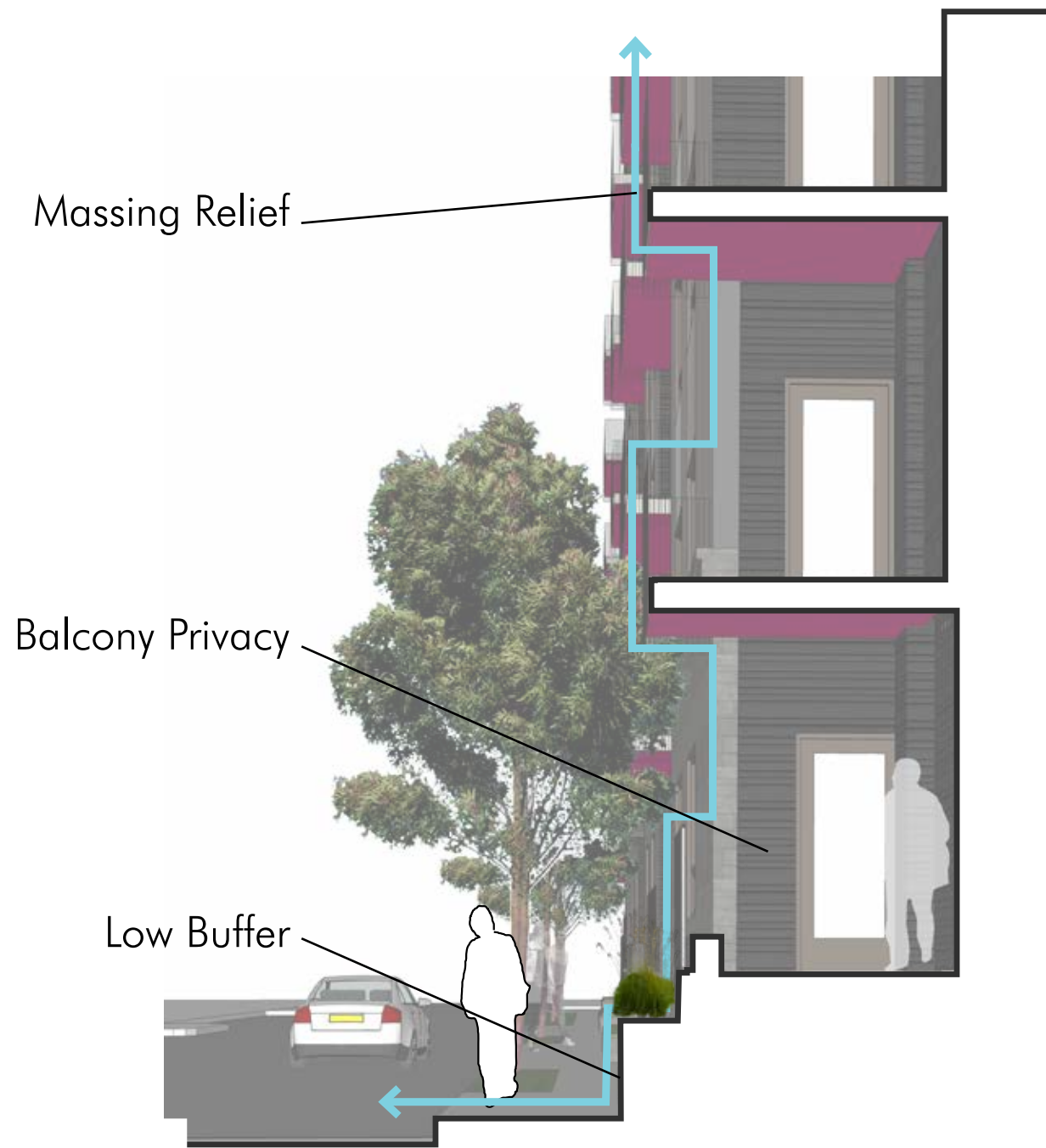


ALLEY ELEVATION

565 4th Street

DDRO PRESENTATION  
2016.09.14





# +75% Restaurant /Retail on Major Streets

572 S. 4th Street  
*opposite corner*



110' of Retail on  
4th & Chestnut

93' non-Retail



404' of Retail on  
4th & Chestnut

Street Level Retail  
565 4th Street

DDRO PRESENTATION  
2016.09.14

CAPITAL  
INVESTMENT  
GROUP, INC.

**GBBN**  
architects



Rendering to be updated to show retail.

4th & Chestnut  
565 4th Street

DDRO PRESENTATION  
2016.09.14

**CAPITAL  
INVESTMENT  
GROUP, INC.**

**GBBN**  
architects



Rendering to be updated to show first floor storefront glazing

Rendering to be updated to show retail.



Rendering to be updated to show first floor storefront glazing

Rendering to be updated to show retail.

4th & Guthrie  
565 4th Street

DDRO PRESENTATION  
2016.09.14

**CAPITAL  
INVESTMENT  
GROUP, INC.**

**GBBN**  
architects