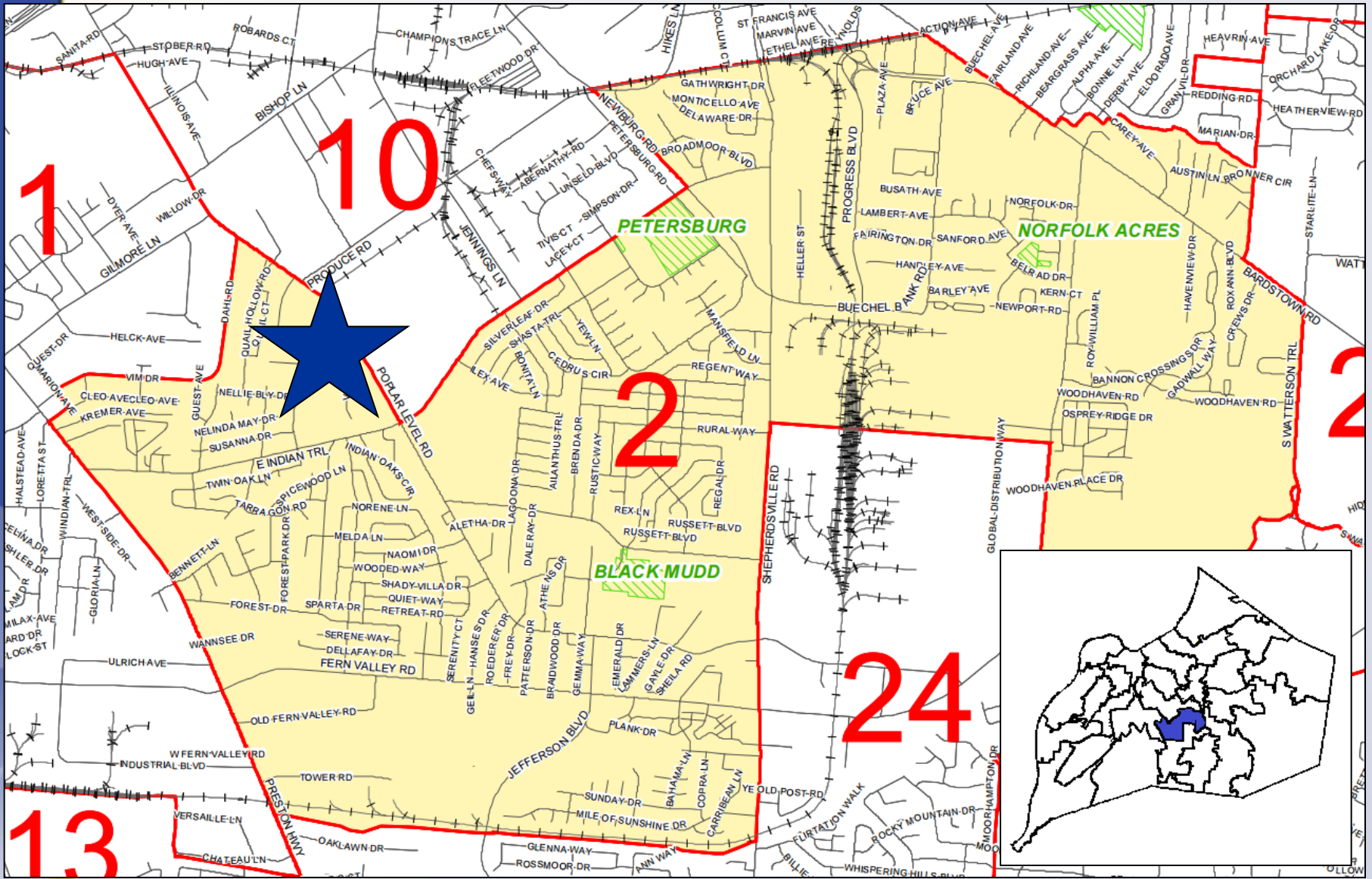


18STREETS1023 FOREST DRIVE CLOSURE



Planning & Zoning Committee
March 26, 2019

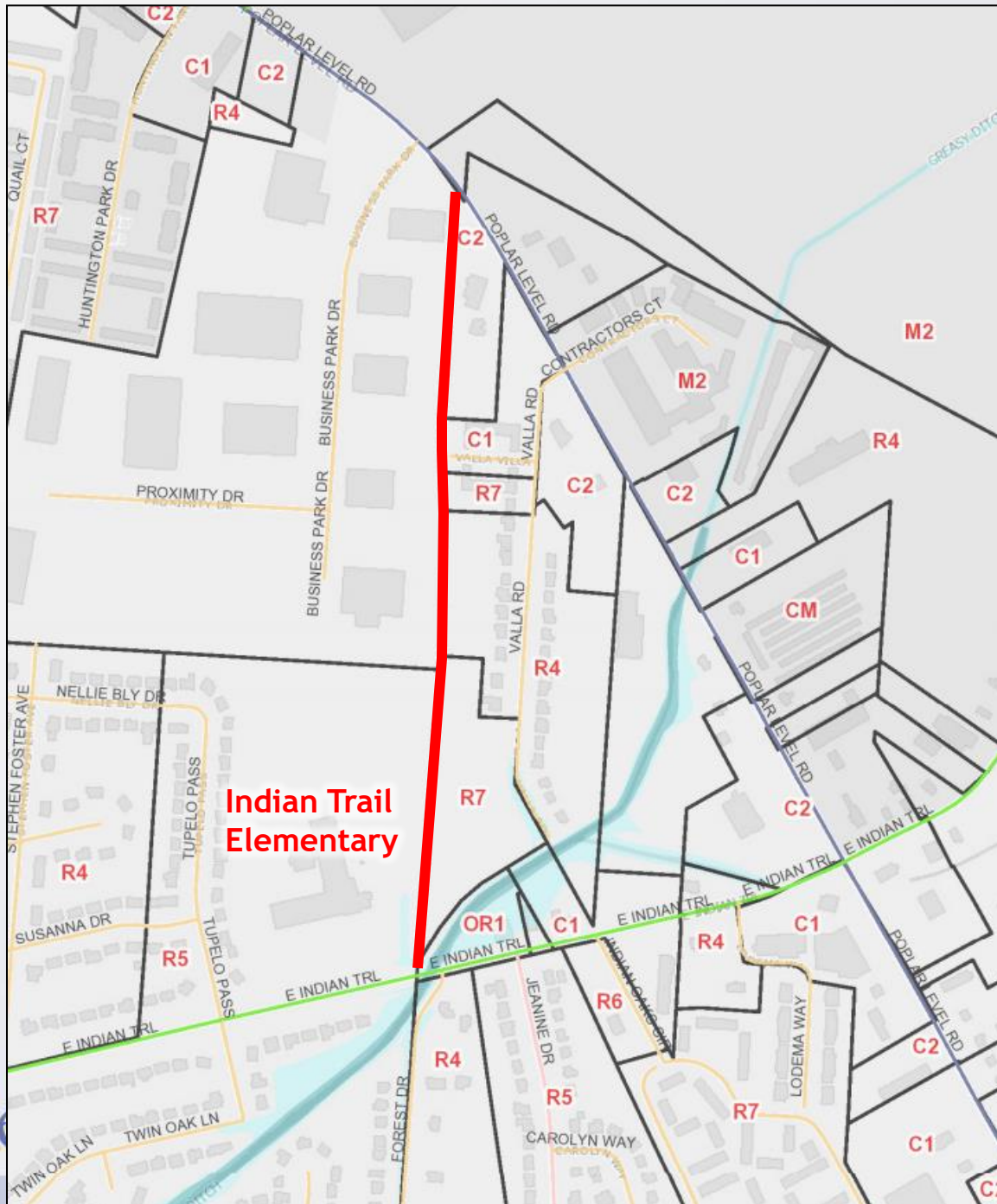


Requests

- Closure of a portion of Forest Drive right-of-way.

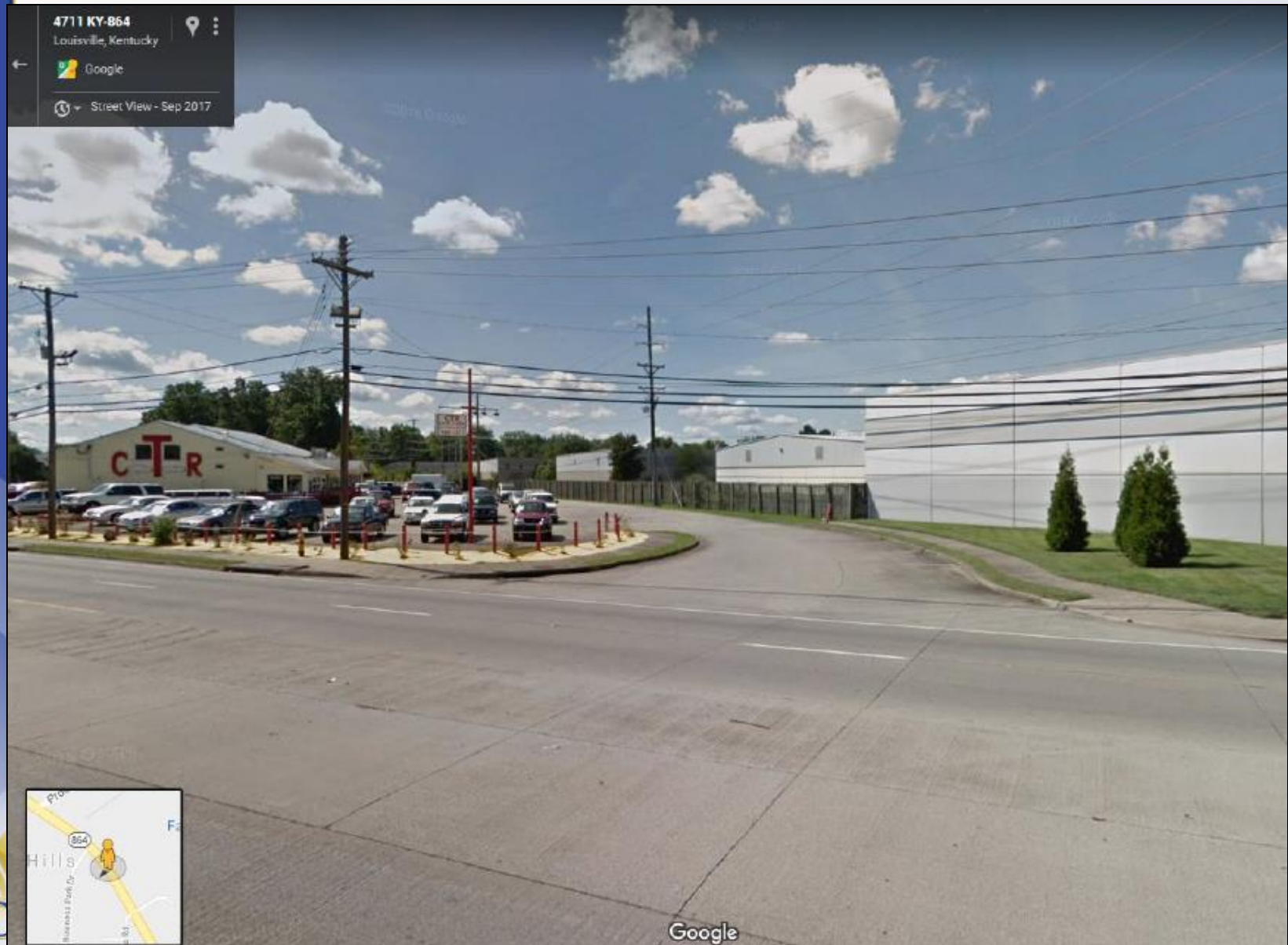
Background

- Applicant is proposing to rezone the property (18ZONE1051) and develop a single family subdivision.
- A portion of unimproved Forest Drive right-of-way will be closed, and the road will be relocated to accommodate the development.



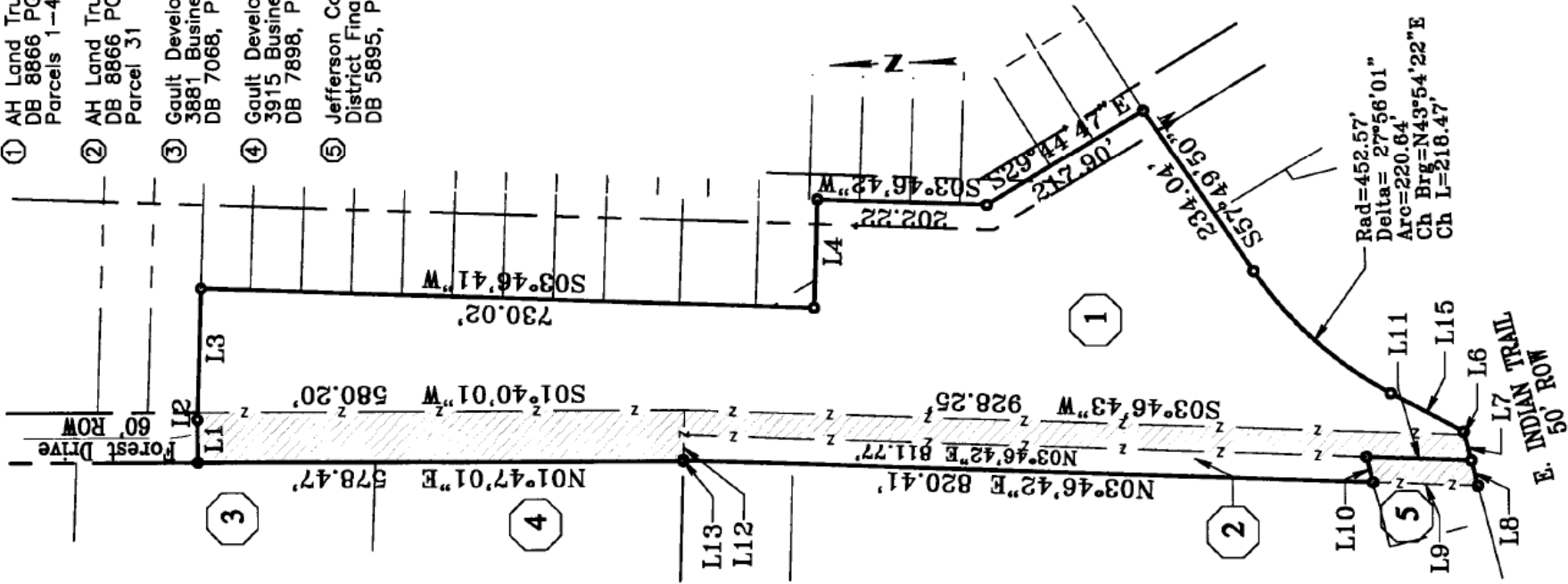
**Indian Trail
Elementary**

View from Poplar Level





- ① AH Land Trust
DB 8866 PG 3
Parcels 1-4, 1
- ② AH Land Trust
DB 8866 PG 3
Parcel 31
- ③ Gault Developm
3881 Business
DB 7068, Pg. 1
- ④ Gault Developm
3915 Business
DB 7898, Pg. 9
- ⑤ Jefferson Count
District Finance
DB 5895, Pg 5



Open Space

Lot Areas < 6,000 S.F.
Lots < 6,000 S.F.
(Lots < 6000 S.F.)

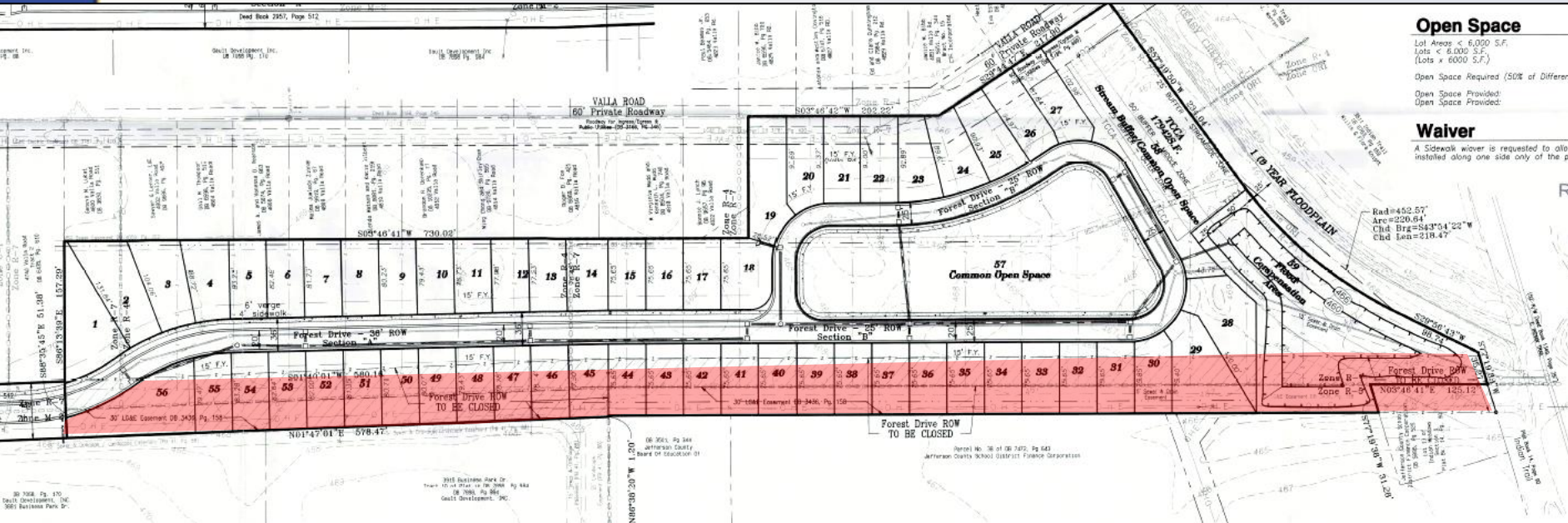
Open Space Required (50% of Different)

Open Space Provided:
Open Space Provided:

Waiver

A Sidewalk waiver is requested to allow installed along one side only of the p

Rad=452.57
Arc=230.84
Chd Brg=343°54'22"W
Chd Len=218.47



Public Meetings

- LD&T meeting on 1/31/2019
- Planning Commission public hearing on 2/21/2019
 - No one spoke in opposition.
 - The Commission recommended approval of the partial street closure with a vote of 6-0 (four members were not present).