

# RIGHT OF WAY PLANS

| STATION RANGE       | TYPE    | BOTTOM WIDTH (FT.) | MATERIAL    |                  | BLANKET           |
|---------------------|---------|--------------------|-------------|------------------|-------------------|
|                     |         |                    | CLASS (FT.) | INT. TYPE (TONS) |                   |
| 553+00 TO 554+35 RT | SPECIAL | 2.0                | 2.0         | 2.0              | TRM 1 2.0 2TB     |
| 553+00 TO 553+68 LT | SPECIAL | 4.0                | 4.0         | 2.0              | TRM 1 2.0 150.0   |
| 554+48 TO 556+04 LT | SPECIAL | 6.0                | 6.0         | 2.0              | TRM 1 2.0 1 511.8 |

**DITCH CONSTRUCTION NOTES**

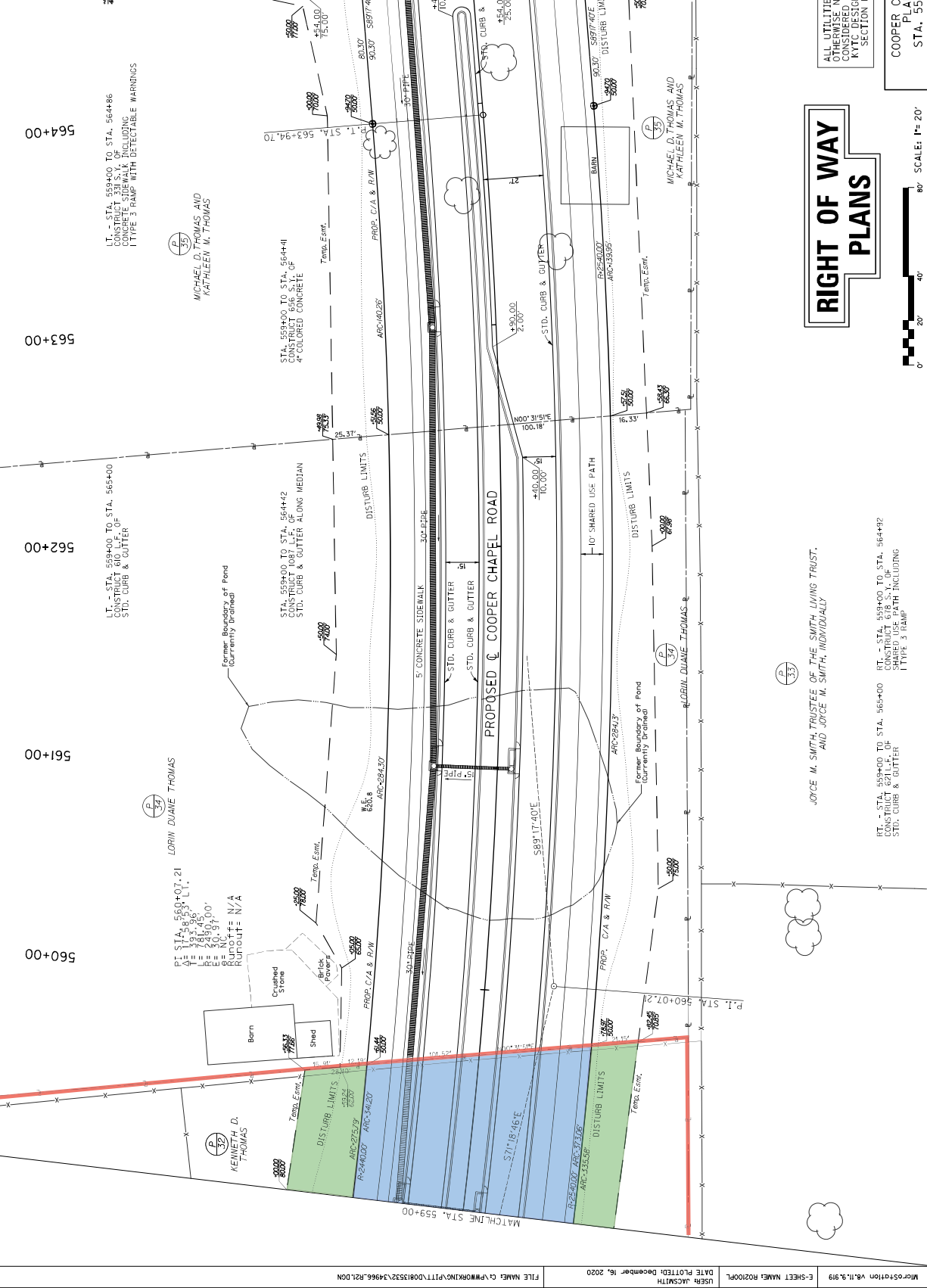
CHANNEL LINING

BLANKET

STA. 554+70 TO STA. 559+00  
 CONSTRUCT 4' C&G OF  
 KENNETH D. THOMAS

STA. 554+70 TO STA. 559+00  
 CONSTRUCT 4' C&G OF  
 KENNETH D. THOMAS

|                                 |          |           |
|---------------------------------|----------|-----------|
| COUNTY OF                       | ITEM NO. | SHEET NO. |
| JEFFERSON                       | 5-404-01 | P21       |
| REVISED PLAN DATE: JUNE 3, 2021 |          |           |



# RIGHT OF WAY PLANS



JOYCE M. SMITH, TRUSTEE OF THE SMITH LIVING TRUST, AND JOYCE M. SMITH, INDIVIDUALLY

RT. - STA. 559+00 TO STA. 565+00 CONSTRUCT 100' OF 1" TYPE 3 RAMP WITH DETECTABLE WARNINGS

RT. - STA. 559+00 TO STA. 564+86 CONSTRUCT 33" S.V. OF 1" TYPE 3 RAMP WITH DETECTABLE WARNINGS

RT. - STA. 559+00 TO STA. 564+41 CONSTRUCT 645' S.C.P. 4" COLORED CONCRETE

RT. - STA. 559+00 TO STA. 564+42 CONSTRUCT 100' OF STD. CURB & GUTTER ALONG MEDIAN

ALL UTILITIES UNLESS OTHERWISE NOTED, ARE CONSIDERED "0" C" PER KYTC DESIGN MANUAL SECTION HD-503.

COOPER CHAPEL ROAD SECTION III  
 PLAN SHEET - MAINLINE  
 STA. 559+00 TO STA. 565+00