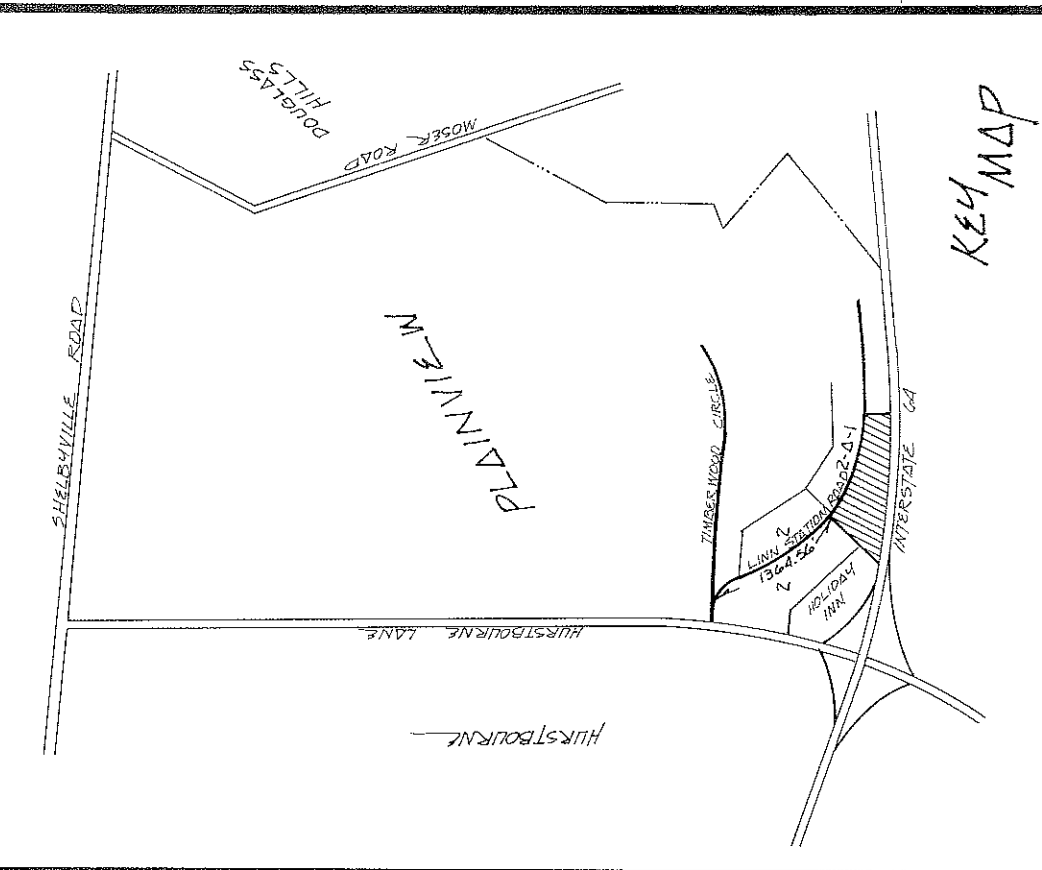


Bl 33 Pg 17

Recorded in Plat Book
No. 32 Page 17

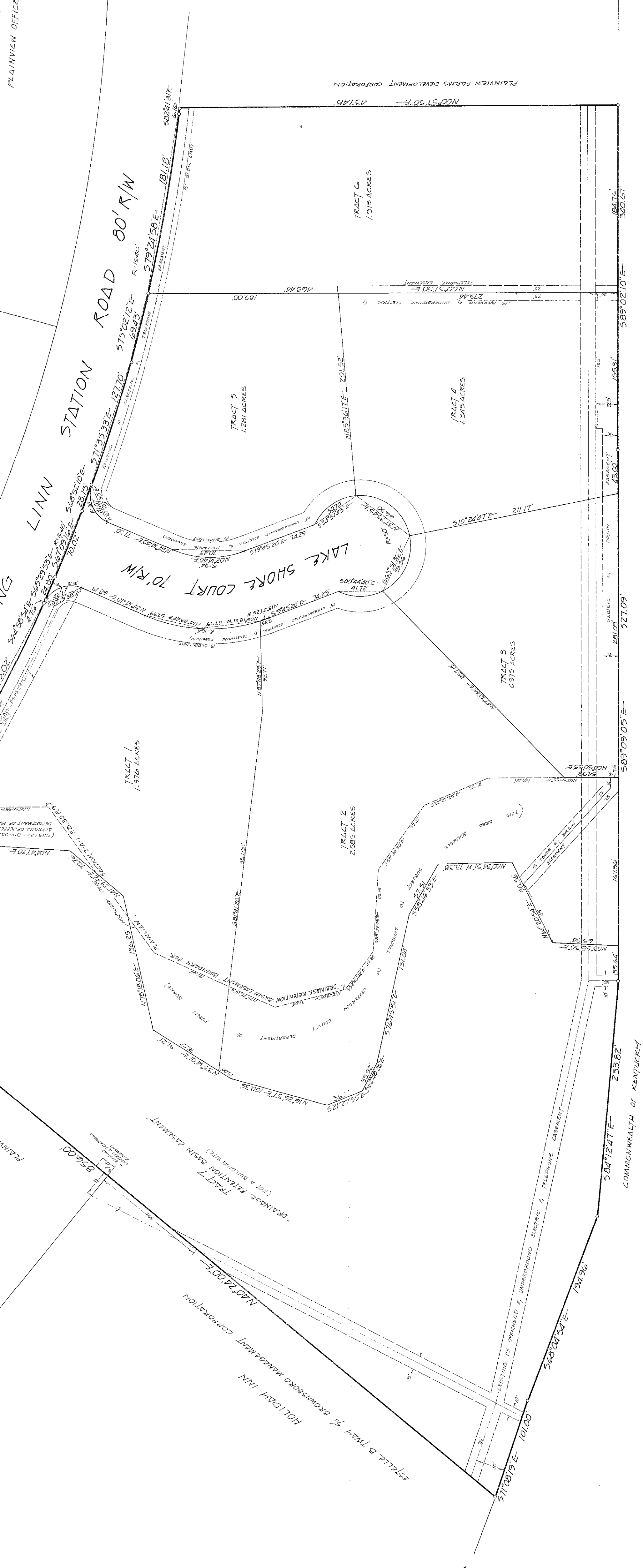
257
S. J. G. & S. J. G.
S. J. G. & S. J. G.
PAID IN FULL
APR 18 1976
PLANNING OFFICE



NOTES
TRACT 5 SHALL BE LIMITED TO ONE ENTRANCE (NO EXIT) ON LANN STATION ROAD. ONLY ONE ACCESS POINT EACH WILL BE ALLOWED FROM LANN STATION ROAD TO TRACT 5.
O. DRIVEWAY, IRON PIPE.

PLAINVIEW, SECTION 2-A-1
TRACT 19
THE PRUDENTIAL INSURANCE COMPANY OF AMERICA
LAKESHORE COURT 10' R/W

TRACT 20
PLAINVIEW OFFICE PROPERTIES



INTEGRATE LCA
(VARIABLE R/W)

COMMONWEALTH OF KENTUCKY

Certificate of Ownership and Dedication
This is to certify that the undersigned in the name of the owners of the land shown on this plat and hereby acknowledge the same as being the plat of PLAINVIEW, REVISED TRACT 21, SECTION 2-A-1, and does hereby dedicate to public use the same.
Witness my hand and this 19th day of May, 1976.
My commission expires the 31st day of January, 1977.
A. Thomas Sturgeon
Surveyor, Jefferson County, Kentucky

Certificate of Approval
Approved this _____ day of _____, 1976.
LOUISVILLE AND JEFFERSON COUNTY PLANNING COMMISSION
Carol L. Egan
Chairman

Land Surveyor's Certificate
I hereby certify that the survey for this plan was made under my supervision and that the plan and linear measurements are in accordance with the knowledge and skill of a land surveyor.
James A. Sells and Kenneth J. B. B. B.
1-13-76

Easements for Electric and Telephone Utilities
The space outlined by dashed lines and marked "Easement" are hereby reserved as easements for electric and telephone lines and for other utilities...
A. Thomas Sturgeon
President

Exemption for Sanitary and Storm Sewer Utilities
An easement for sanitary sewer and drainage purposes is hereby reserved, over and under the plat of land and spaces as defined and bottled by dashed lines, marked "sewer and drain" lines...
A. Thomas Sturgeon
President

Certificate of Reservation of Gas Easement
The space outlined by dashed lines and marked "Gas Easement" are hereby reserved as easements for gas lines...
A. Thomas Sturgeon
President

Certificate of Reservation of Drainage Retention Basin Easement
The space outlined by dashed lines and marked "Retention Basin Easement" are hereby reserved as easements for the retention basin...
A. Thomas Sturgeon
President

THE DEPTH OF ALL ROADSIDE SMOLES INCLUDING DRIVEWAY ENTRANCES AND GULLVERTS UNDER DRIVEWAYS SHALL BE 3/4 INCHES BELOW FINISHED STREET CENTERLINE. ELEVATION UNLESS OTHERWISE NOTED. * NOT APPLICABLE SINCE ALL STREETS ARE CURB AND GUTTER.

PLAINVIEW

REVISED TRACT 21, SECTION 2-A-1

OWENS & DEVELOPERS
PLAINVIEW FARMS DEVELOPMENT CORPORATION
SUITE 400 1000 LANN STATION ROAD
LOUISVILLE, KENTUCKY 40201

MAY 1976 SCALE: 1"=40'
1 TRACT - 15863 ACRES
6 TRACTS - BUILDABLE

Bl 33 Pg 17

10-52-66 32x17
1534-LS