



PBI PROJECT

Place Based Investigations



WELCOME MESSAGE

Your involvement is critical to success!

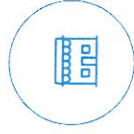
Office of Mayor Greg Fischer

TRAINING OVERVIEW

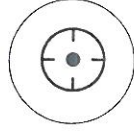
WHAT WE'RE GOING TO DISCUSS TODAY



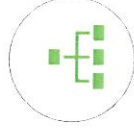
WELCOME



ABOUT THE PROJECT



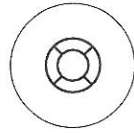
PURPOSE



ORG CHART



PARTNERS



PROJECT LIFE CYCLE



KEY PERFORMANCE INDICATORS



PROCESS MAP

PROGRAM HISTORY

HOW DID THIS START?

PROBLEM IDENTIFIED

2013

High shooting victimization identified in Cincinnati neighborhoods

INCREASED SHOOTINGS

2014

Increase in shooting victimization experienced in neighborhoods led to the discovery of Crime Place Networks in Cincinnati.

PIVOT IS DEVELOPED

2015

PIVOT: Place Based Investigations of Violent Offender Territories strategy developed in the fall to address year over year increases in shooting victimization in neighborhoods

LAUNCH

2016

PIVOT launched in the Spring; focused on two neighborhoods.

CRIME PLACE NETWORK

WHAT IS IT?

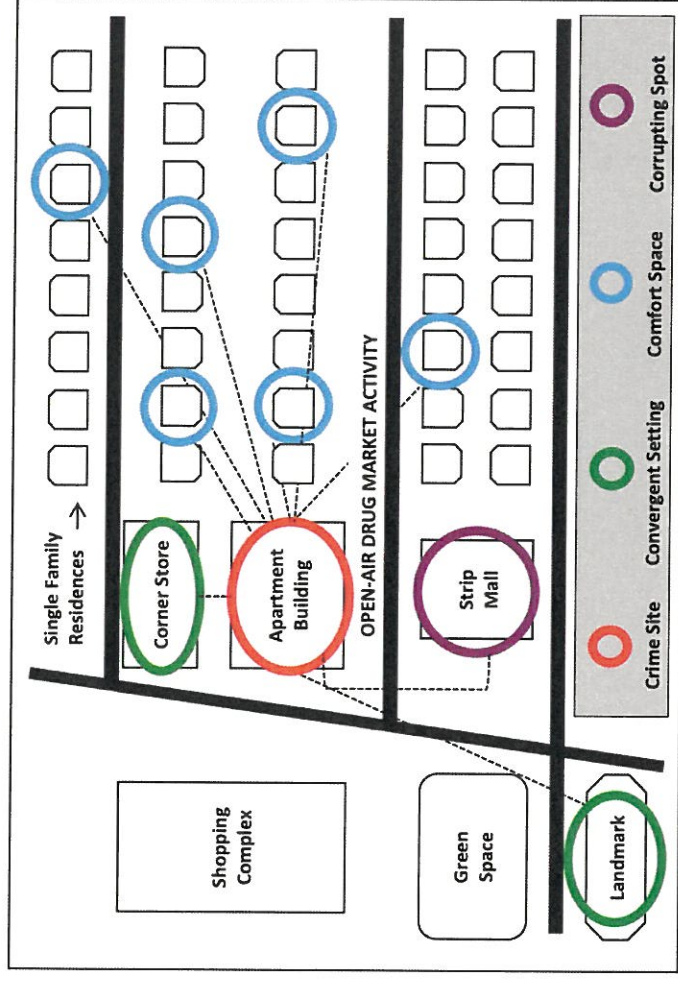
How it's defined?

Two or more places used to conduct or facilitate criminal activity.

More Information

There can be up to four (4) types of places in a network:

1. Crime Site – place where crime occurs
2. Convergent Settings – public places where offenders routinely meet
3. Comfort Spaces – private meeting, staging, and supplying locations
4. Corrupting Spots – places that encourage criminal activity in other locations



TAILORING TO LOUISVILLE

HOW WAS THIS INTRODUCED TO LOUISVILLE?

PIVOT INTRODUCED

2019

PIVOT strategy introduced to Louisville Metro Police Department in May of 2019

LEADERSHIP BUY-IN

2019

LLT is introduced to the PIVOT strategy in August of 2019

LOUISVILLE ADOPTS STRATEGY

2019

In December of 2019, Louisville adopts the PIVOT strategy and creates the Place Based Investigation (PBI) pilot

LAUNCH

2020

Louisville launches its PBI pilot project in the Spring of 2020

PROJECT PURPOSE

WHAT WE HOPE TO ACCOMPLISH

WE
WANT
TO
BE
THE BEST



FOCUSED APPROACH

Addresses Crime Place
Networks where violence
has been chronic or
sustained



DISRUPT

Disrupt offenders' ability to
harm individuals and the
surrounding community
through focused deterrence
strategies



PLACE NETWORKS

Efficiently identify place
networks that facilitate
violence

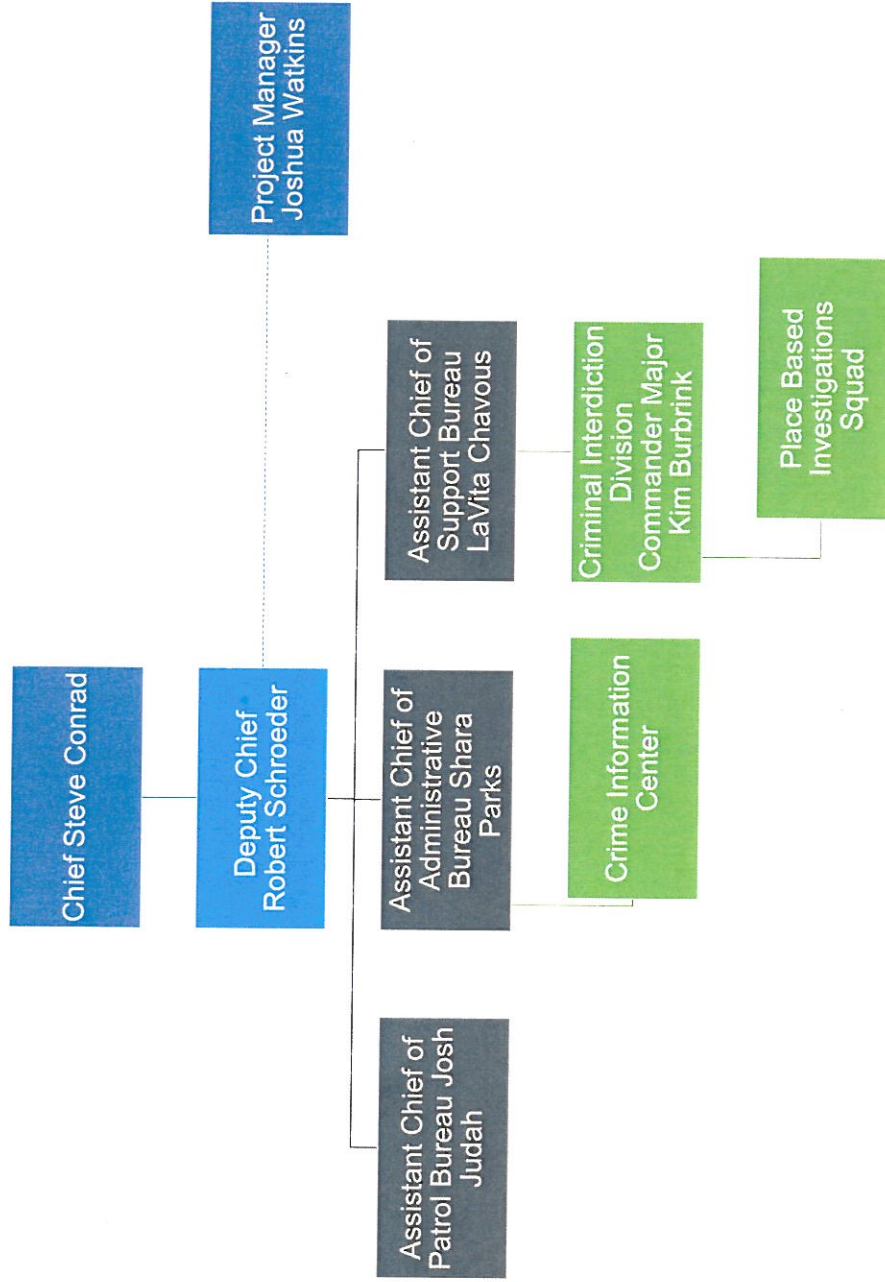


SUSTAINABILITY

Create sustainable solutions
that enhance public safety

ORGANIZATIONAL CHART

WHAT IS OUR STRUCTURE?



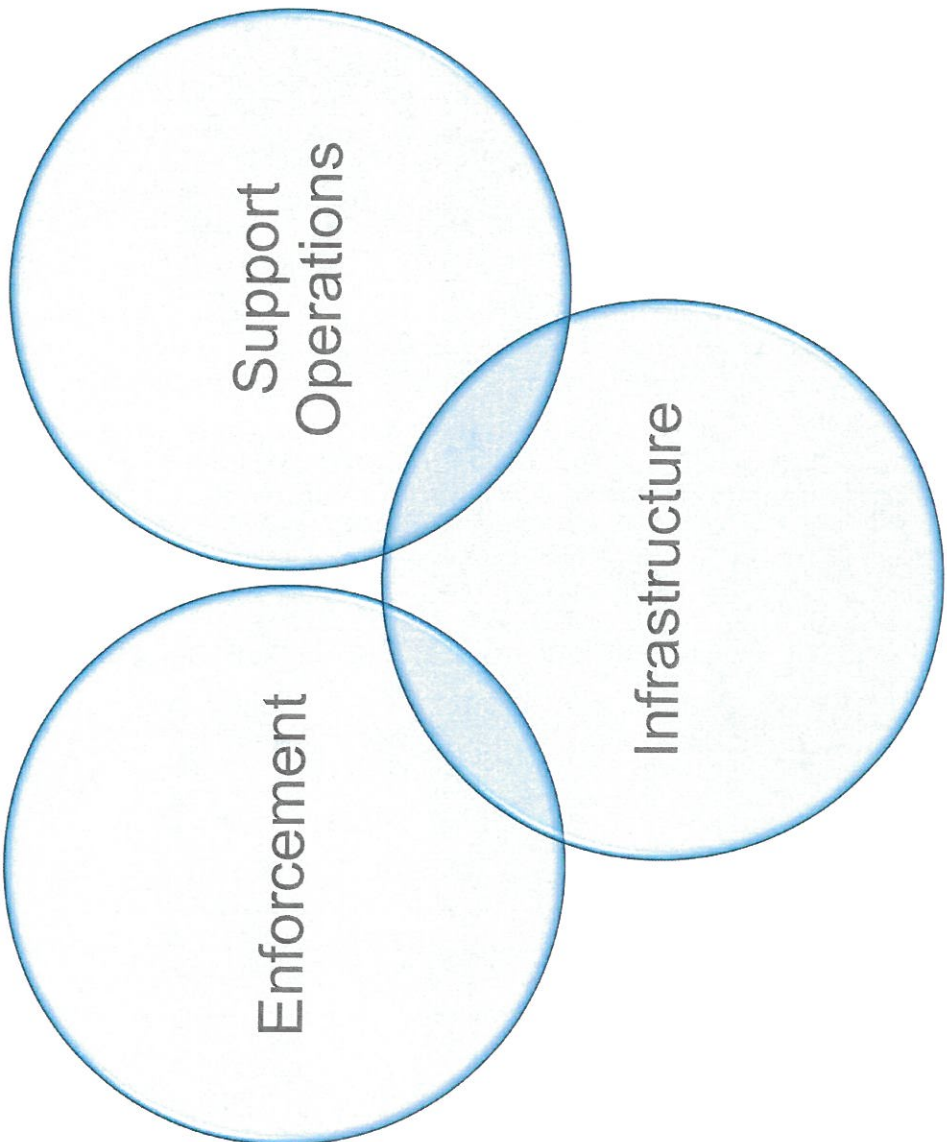
OUR PARTNERS

WHO GETS THE WORK DONE

Louisville Metro Police Department	Civic Innovation & Tech	Codes & Regs	Communications	County Attorney
Develop Louisville	Economic Development	Equity & HR	Louisville Fire Department	Louisville Metro Department of Corrections
Mayor's Office	Metro Animal Services	Office of Management and Budget	Office of Performance Improvement	Office for Safe and Healthy Neighborhoods
PARC	Public Works and Assets	Resilience and Community Services	Youth Detention Services	Community Partners
Criminal Justice Commission	Parks and Recreation	Public Services	Louisville Forward	Community Building
Public Health and Wellness	Transit Authority of River City	Louisville Water Company	Metropolitan Sewer District	Louisville Gas and Electric

WORKING GROUPS

ROLES THE PARTNERS PLAY

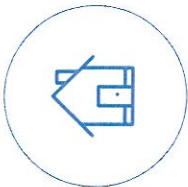


A person's hands are shown holding a smartphone, with the device positioned over a laptop keyboard. The entire scene is overlaid with a semi-transparent blue filter. The text 'Project phases, phase gates' is written in white, and 'KPIs and process map' is written in a light green color, both in a bold, sans-serif font.

Project phases, phase gates KPIs and process map

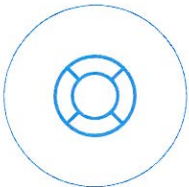
PROJECT LIFE CYCLE

PHASES OF THE PROJECT



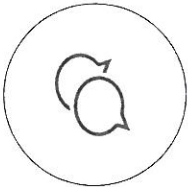
RESEARCH

What's going on?



INTERVENTION

Taking action!



EVALUATION

Did it work?

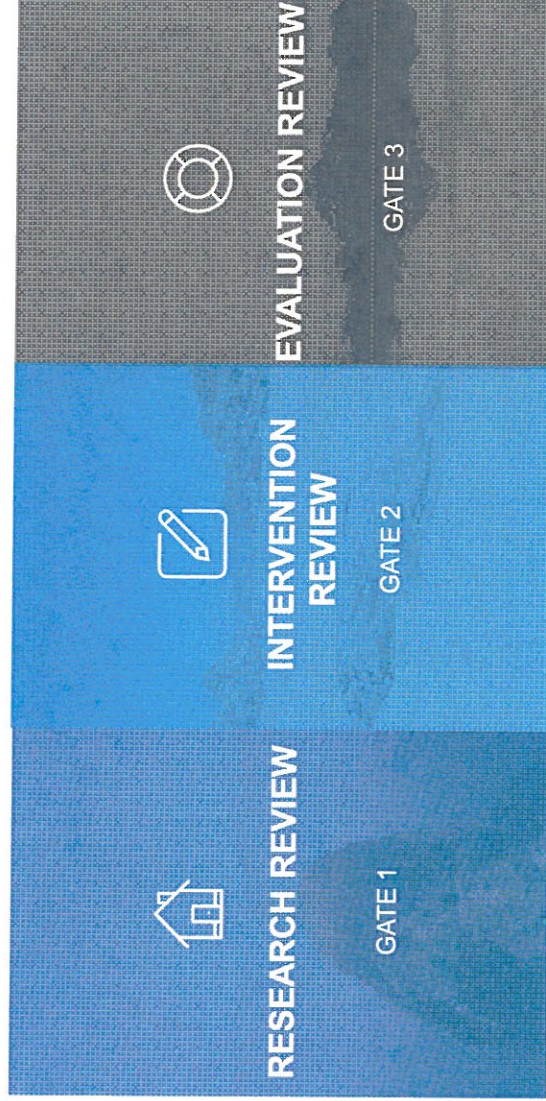


CLOSE OUT

Write everything down!

PROJECT PHASE GATES

BEFORE MOVING ON



PROJECT PHASE & PHASE GATES

WHAT HAPPENS, WHEN

01

PROJECT PHASE: RESEARCH

PBI Squad and partners capture data at the beginning of the project to determine crime place network

02

PHASE GATE: RESEARCH REVIEW

PM conducts review of data with partners to develop tailored intervention strategies

03

PROJECT PHASE: INTERVENTION

Partners deploy intervention strategies in the focus area

04

PHASE GATE: INTERVENTION REVIEW

PM leads intervention review with partners to document results from intervention activities

05

PROJECT PHASE: EVALUATION

PM conducts evaluation of data gathered from intervention review and develops project report

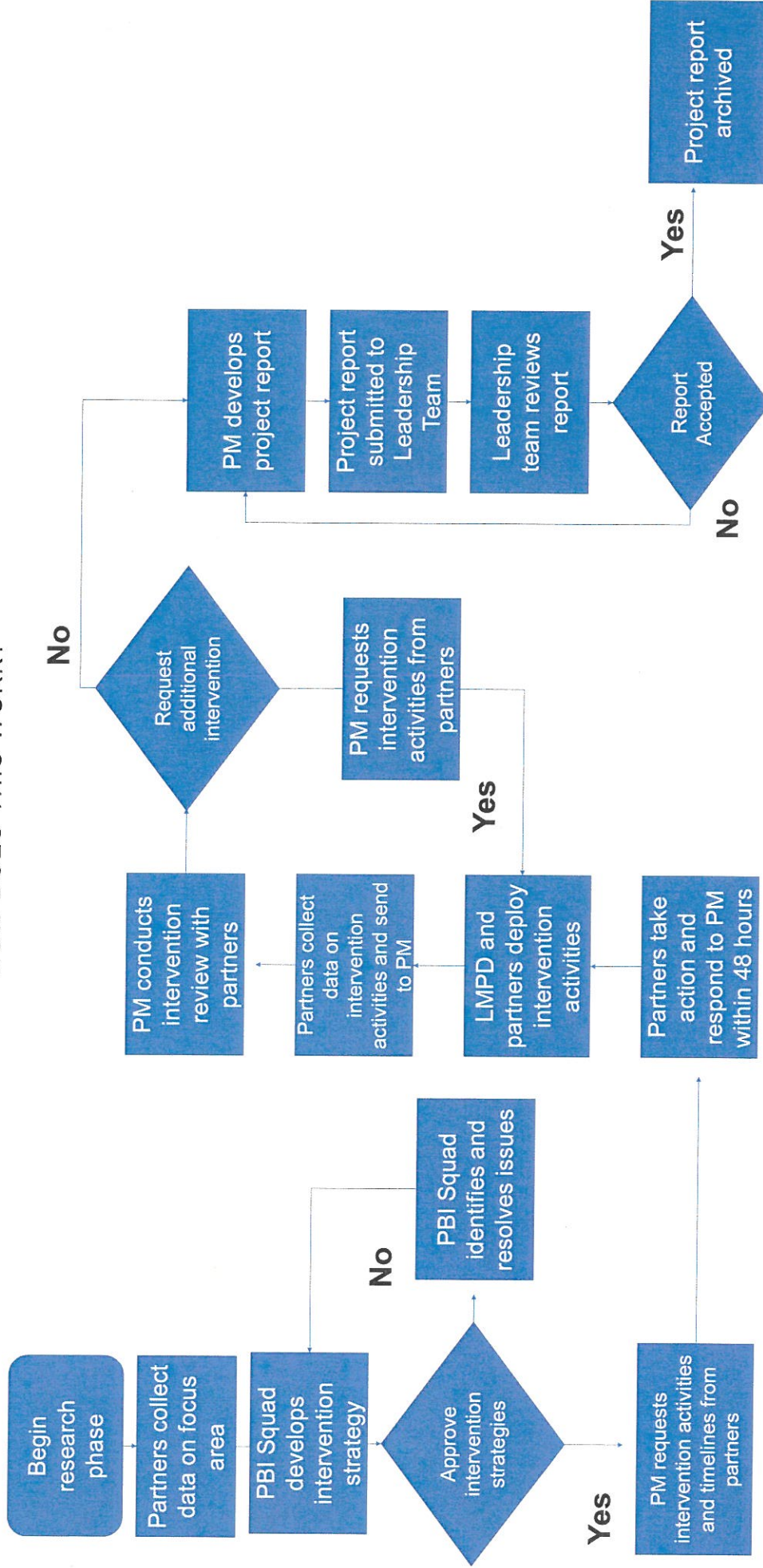
06

PHASE GATE: EVALUATION REVIEW

Leadership team reviews project report to capture lessons learned and report is archived

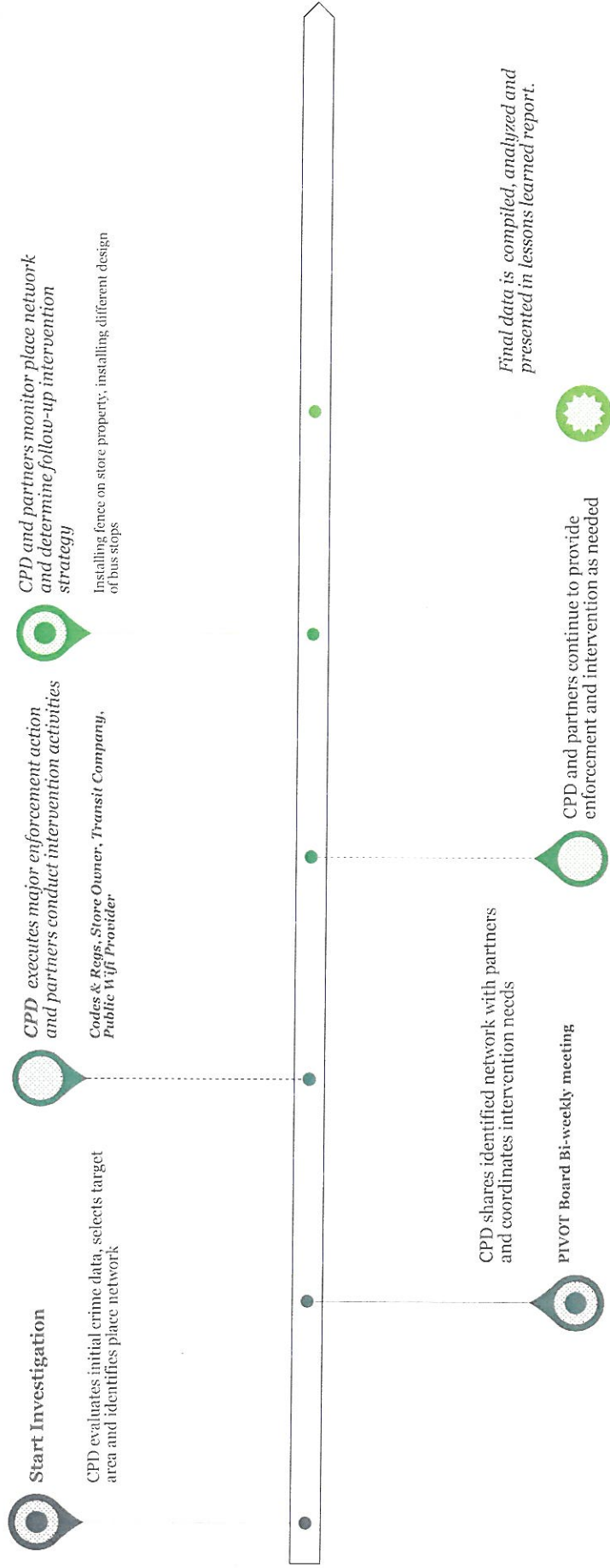
PROCESS FLOW CHART

HOW DOES THIS WORK?



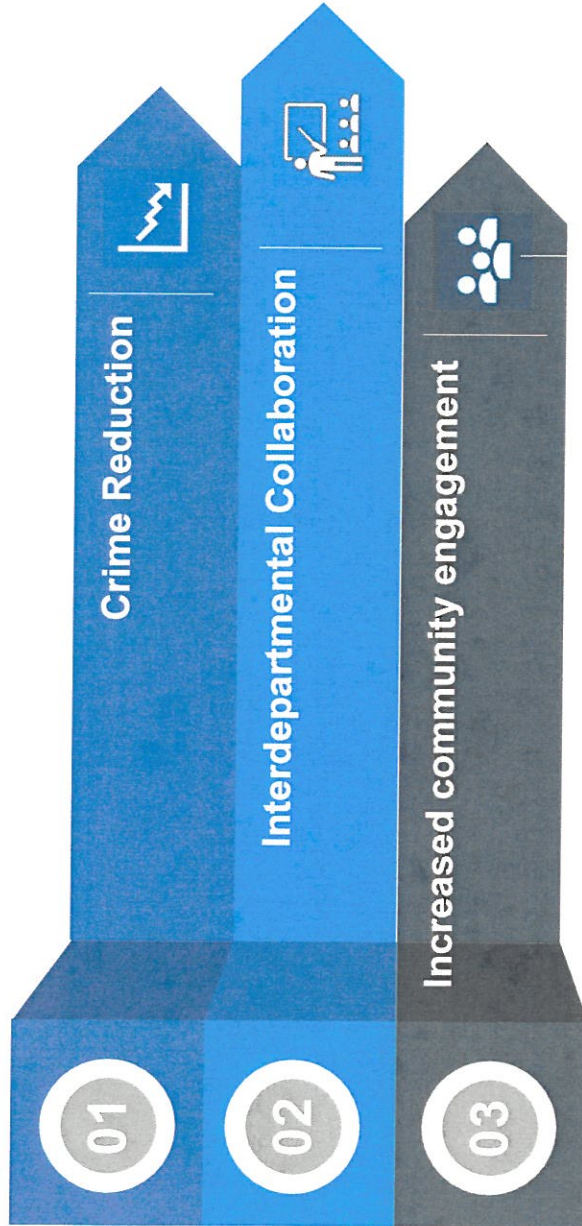
CINCINNATI EXAMPLE

HOW DOES THIS WORK?



KEY PERFORMANCE INDICATORS

THE RESULTS WE ARE LOOKING FOR



ANALYSIS

Over the course of this project, we hope to see the following results.

1. We want to see a reduction in violent and nuisance related crimes to improve quality of life for residents.
2. We want to see more departments working cross functionally on this work.
3. We want to measure and increase community engagement as the project continues.



Louisville Metro Police
Department

CLOSING MESSAGE

We appreciate the commitment and engagement shown today!