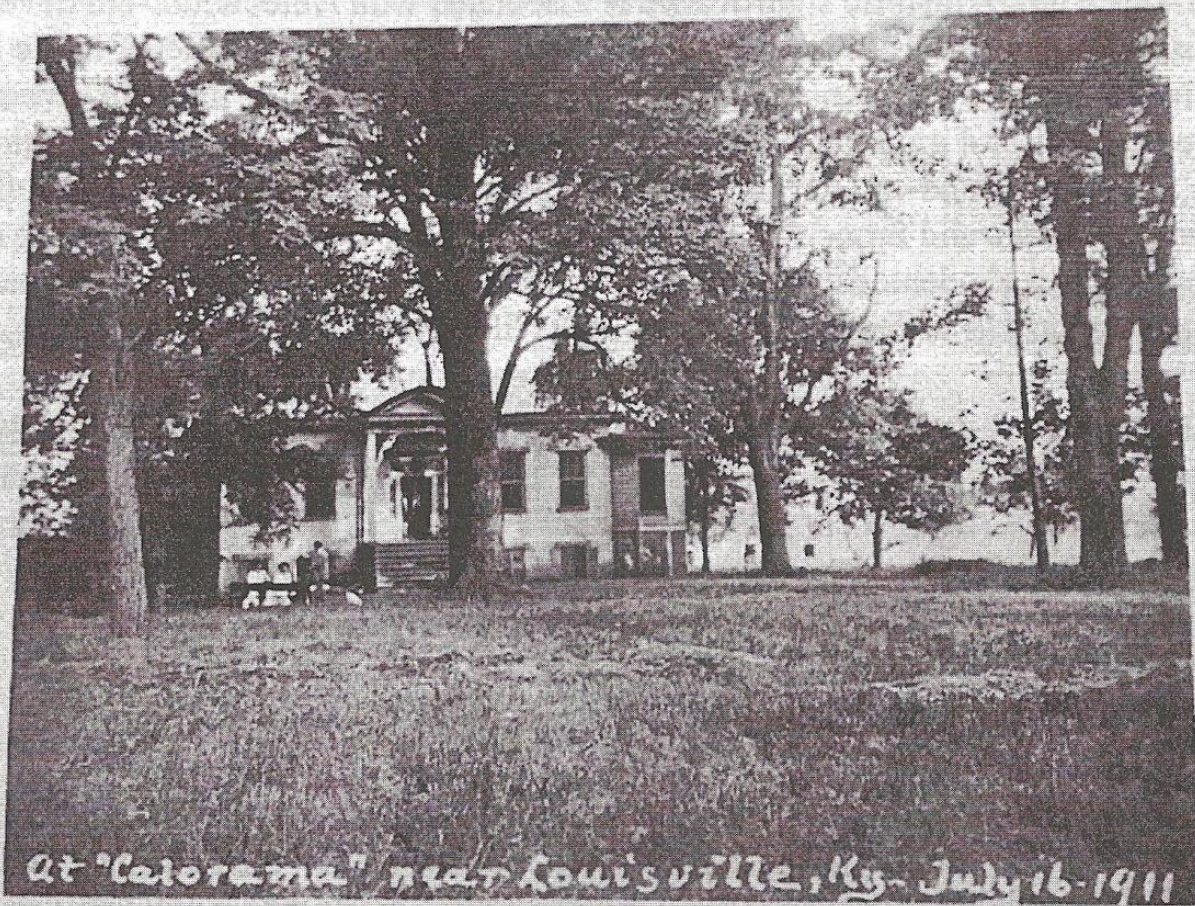
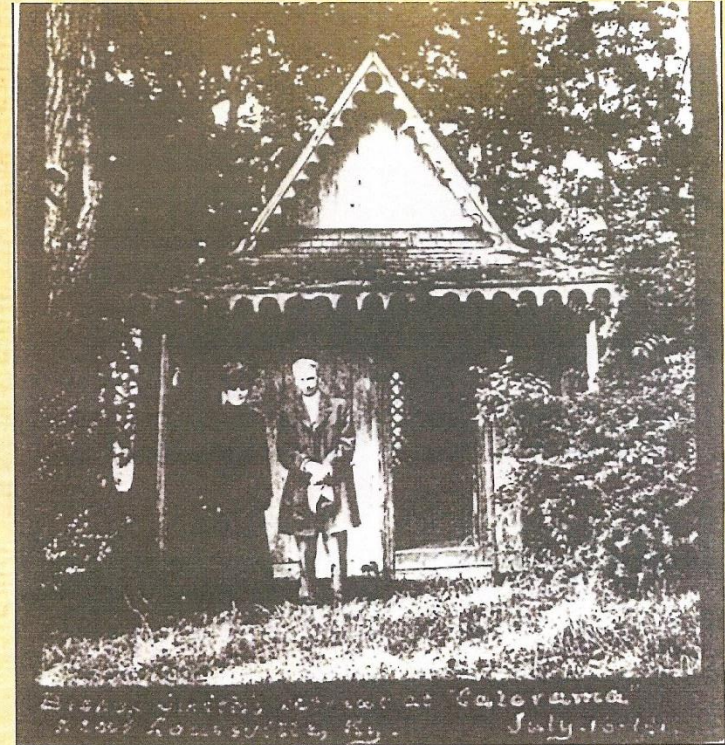
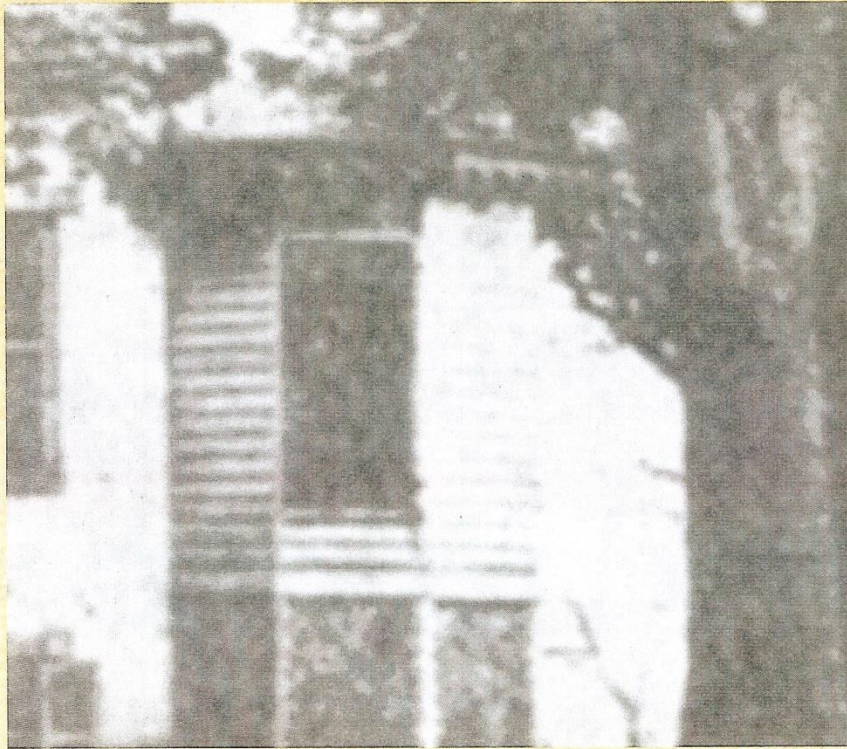


Landmarking Kalorama: A Quick Review

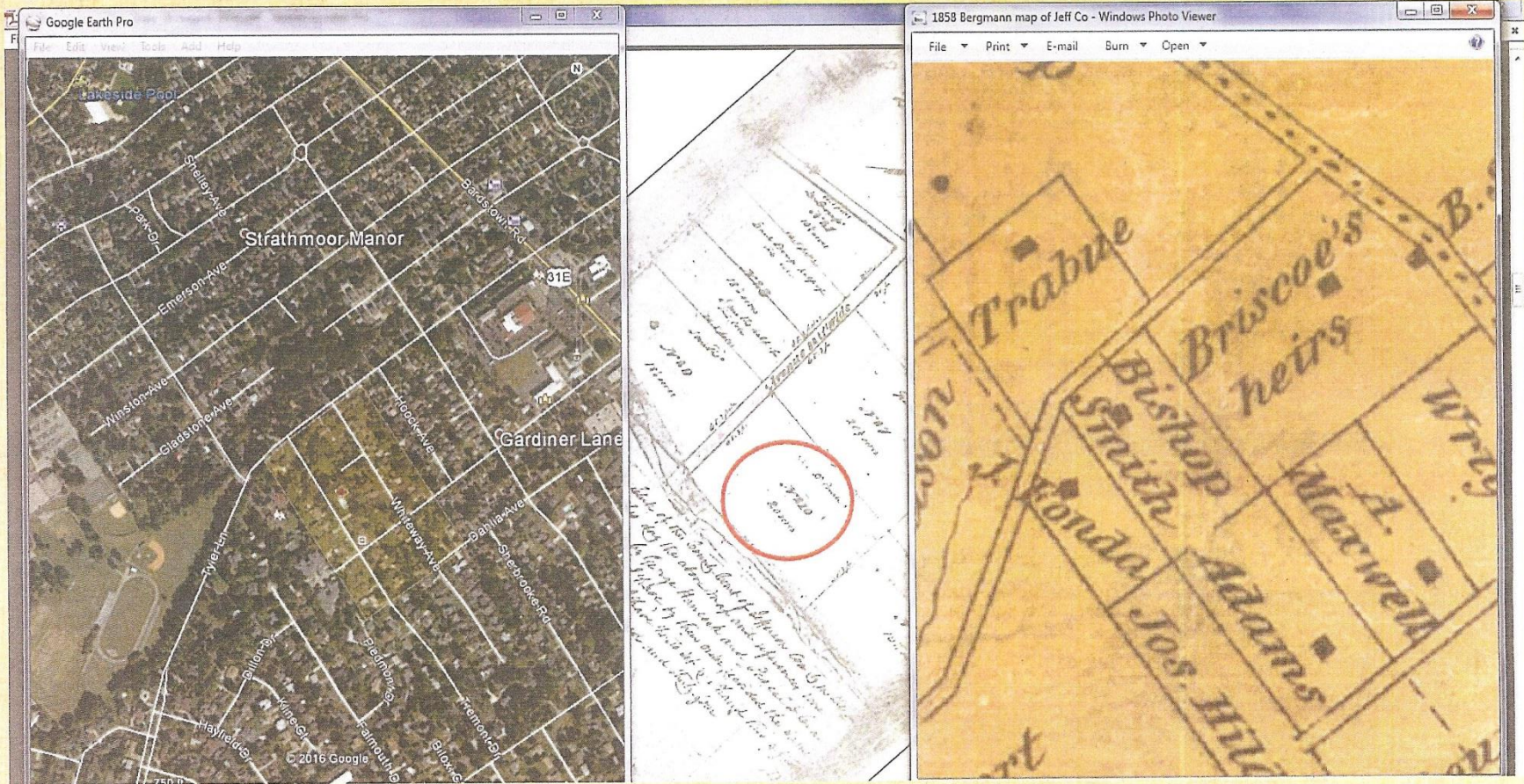


At "Calorama" near Louisville, Ky. July 16-1911

The gingerbread on the house addition is the same as on the study

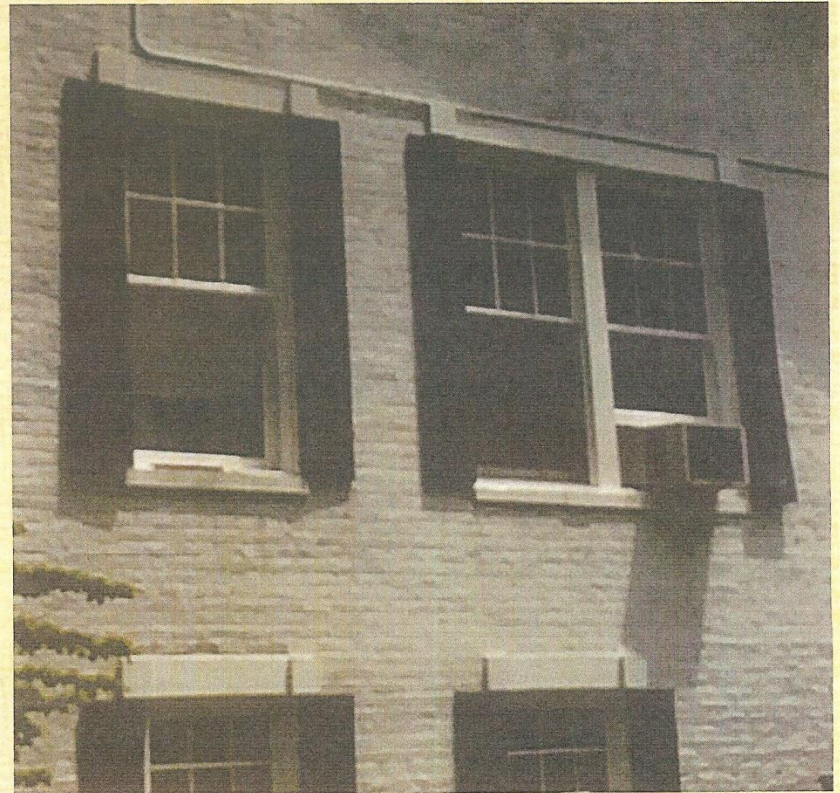
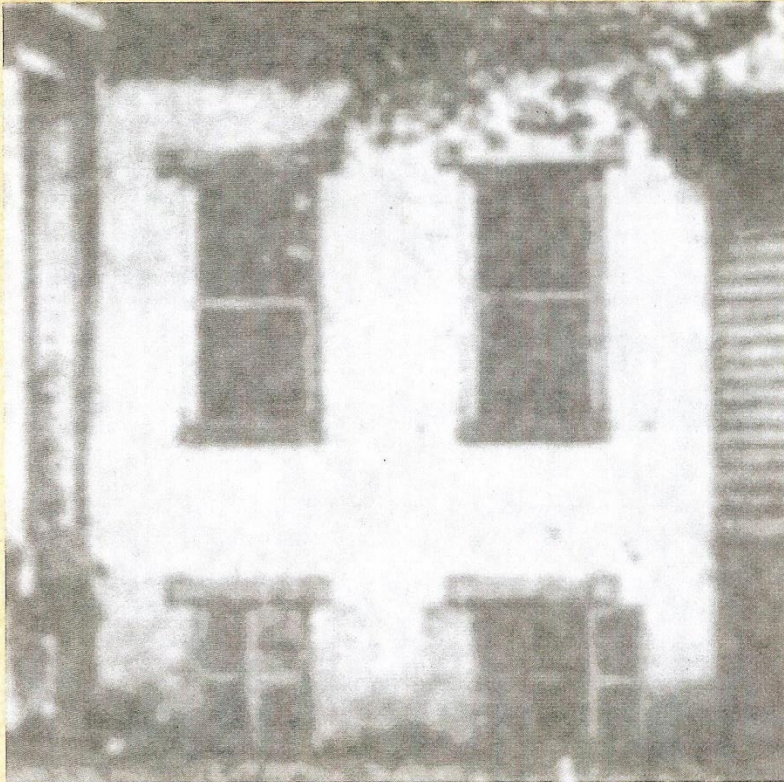


The house shows in 1858 in the same location as today



Red Herring Issues - Continued

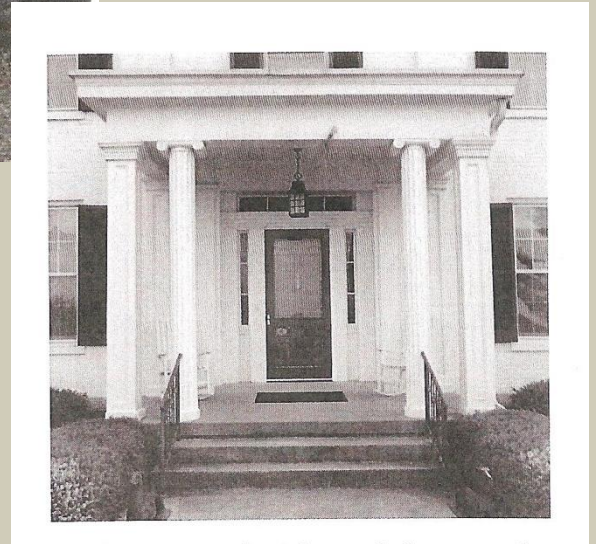
The stone lintels in the 1911 photos are the same as the lintels today

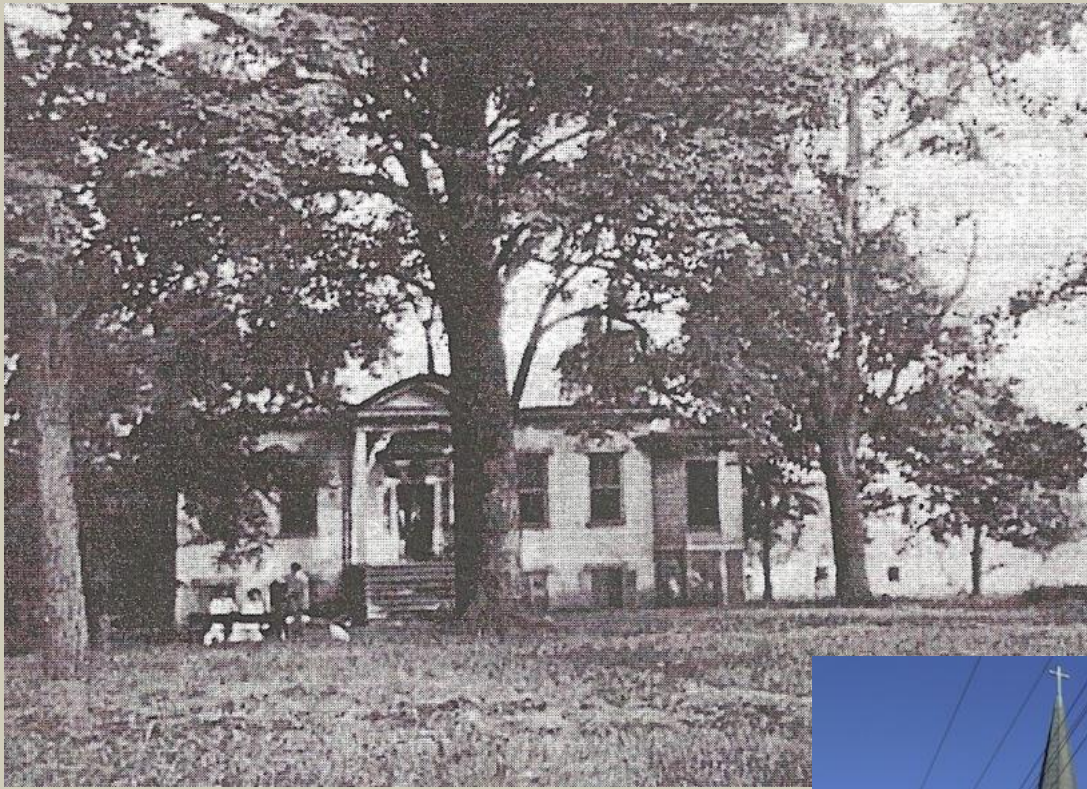




Kalorama ca. 2011

Federal/Greek Revival doorway,
James Harbison House ca. 1840,
Shelby Co., KY





Kalorama, 1911 with octagon
dovecote on right

St. Philips Episcopal Church,
Harrodsburg, KY



Wall drawing in
Bishop Smith's
study, now at St.
Francis in the
Fields, Louisville, KY



Oral tradition regarding Kalorama



Staffordshire plate, ca. 1835, with image of Episcopal Theological Seminary, Lexington, KY now on view at the Speed Art Museum