

2516 South 4th Street

Zoning Description

CHANGE IN ZONING FROM R-6 TO C-1
0.15 Acres

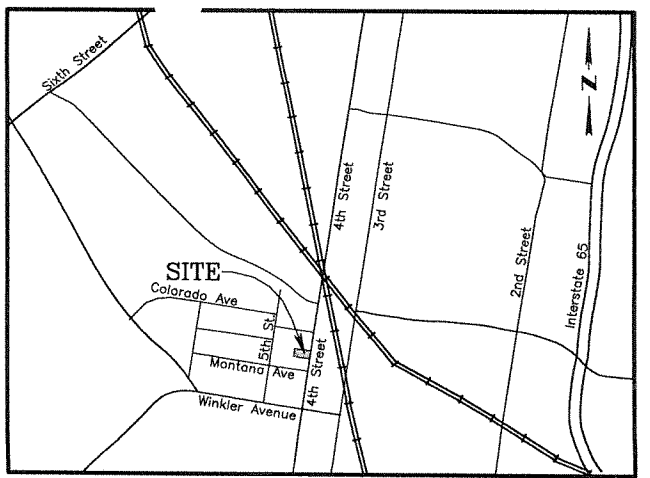
Being a certain parcel of land situated in the County of Jefferson, Commonwealth of Kentucky, located along the west side of South 4th Street, being a portion of Lots 145, 146 and 147 as recorded in Deed Book 10732 Page 169, Deed Book 10380 Page 388 and Deed Book 10315 Page 472 in the Office of the Clerk of Jefferson County, Kentucky and more particularly described as follows:

Beginning at a point in the West line of South 4th Street, 220 feet North of Montana Avenue (formerly known as "K" Street); thence Westwardly in a parallel line with Montana Street 105.50 feet to the **True Point of Beginning**; thence continuing Westwardly a distance of **83.08 feet** to the Easterly line of 10 foot alley; thence Southwardly with the Easterly line of said alley a distance of **79.10 feet**; thence Eastwardly in a parallel line with Montana Street a distance of **78.65 feet**; thence Northwardly a distance of **79.00 feet** to the point of beginning. Containing 0.15 ACRES, more or less.

RECEIVED

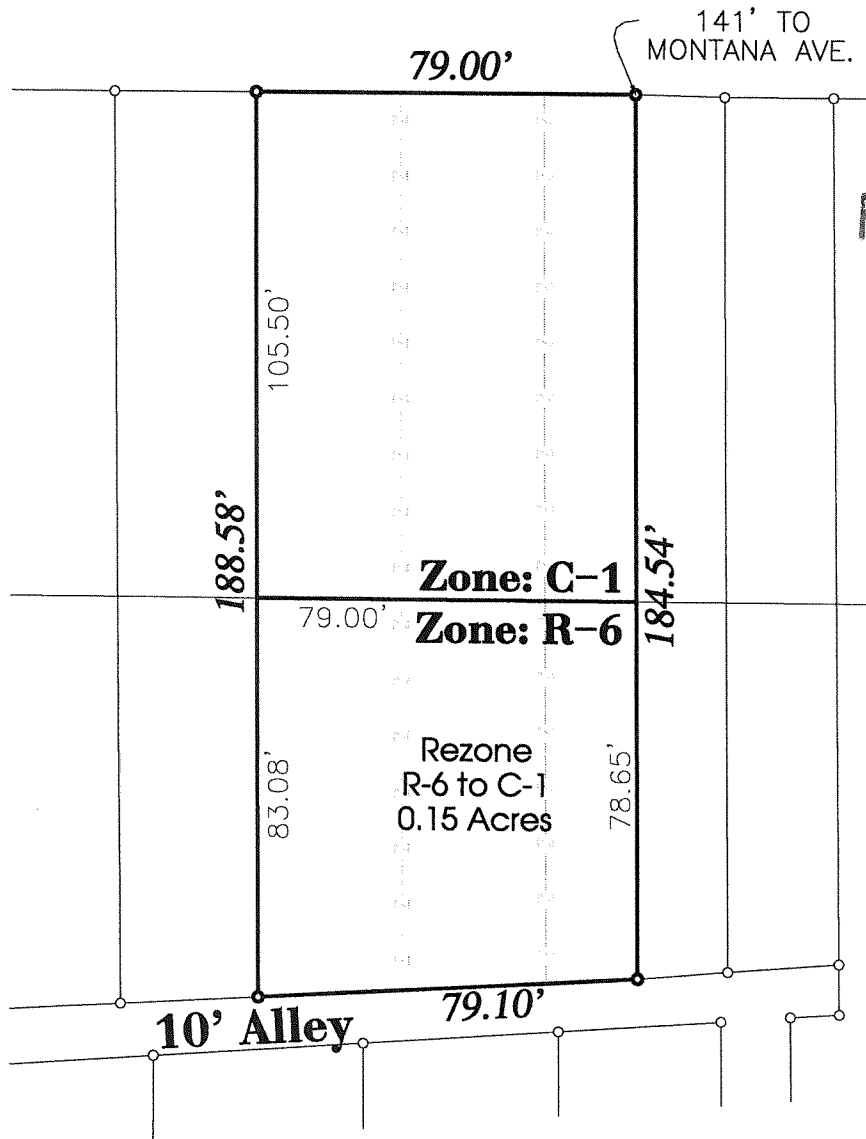
AUG 20 2018

PLANNING &
DESIGN SERVICES



VICINITY MAP
NO SCALE

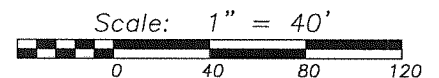
S. 4th Street 60' ROW



RECEIVED
AUG 20 2018
PLANNING &
DESIGN SERVICES

ZONE CHANGE AREA

R6 to C1 .015 Acres



Location:
2516 South Fourth Street

Owner:
FARK Land Trust
3600 Trail Creek Place
Louisville, Kentucky 40253

**ZONING
BOUNDARY
EXHIBIT**

AL ENGINEERING INC.
Civil Engineering &
Land Development Services
13000 Middletown Industrial Blvd.
Suite A
Louisville, Kentucky 40223
(502) 254-2245

Acct: 2018-520

Date: August 3, 2018

Case Number:
18ZONE1042

Zone/FD: C1 TN
Tax Block, Lot, Sublot:
050D 145, 146 & 147

Page 1 of 1
Scale: 1" = 40'

18 ZONE 1042