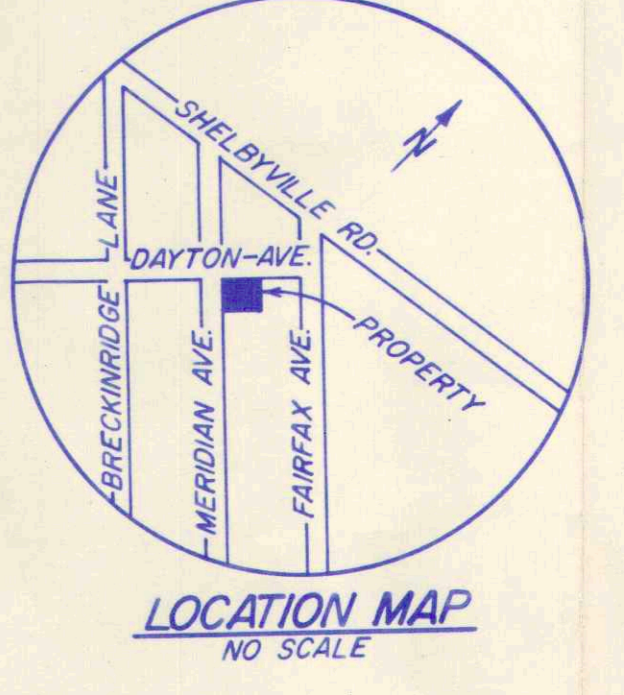


SITE PLAN FOR PROPOSED RE-ZONING
BYRON MORGAN, M.D. & ERIL S. HILGEFORD, M.D.
201 MERIDIAN AVE.
LOUISVILLE, KENTUCKY



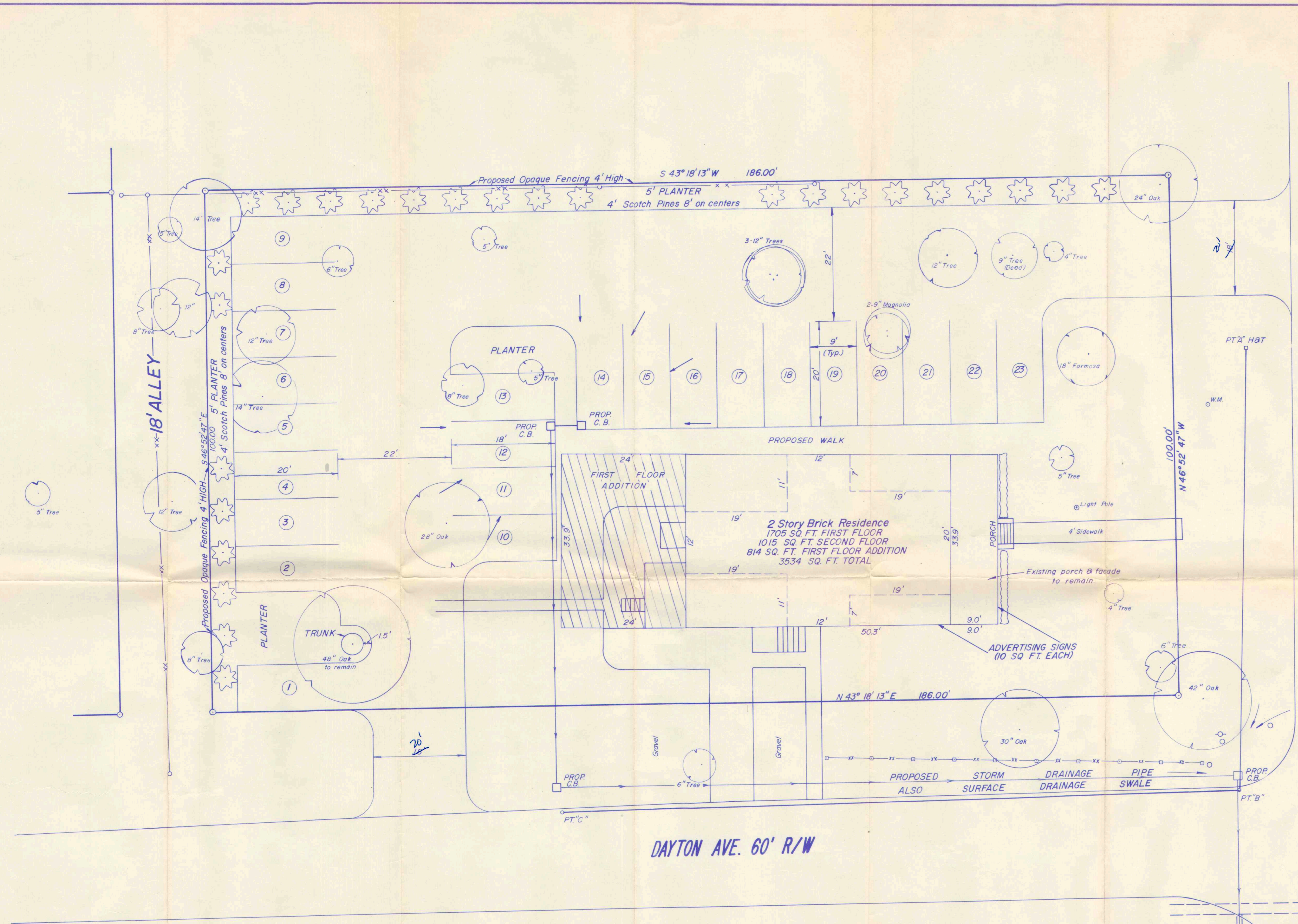
909
PRELIMINARY APPROVAL DEVELOPMENT PLAN
LOUISVILLE-JEFFERSON COUNTY DEPARTMENT OF TRAFFIC ENGINEERING
DATE: 1-5-81
Assistant Director: [Signature]

Bearings have been revised

PRELIMINARY APPROVAL SURFACE WATER CONTROL
Conditions of Approval: **FOR ZONING**
DATE: 1-5-81
M.S. Evans
WATER MANAGEMENT ENGINEER
JEFFERSON COUNTY

RECEIVED
1981
LOUISVILLE AND JEFFERSON COUNTY PLANNING COMMISSION

DEVELOPMENT PLAN REVIEWED (Not for Construction)
CITY OF LOUISVILLE DEPARTMENT OF PUBLIC WORKS
Principal Asst. City Engineer: [Signature] 1/5/81
City Engineer: [Signature] 1/5/81



PROPOSED FLOOR AREA
1. 1st Floor - 2519 SQ. FT.
2. 2nd Floor - 1015 SQ. FT.
TOTAL - 3534 SQ. FT.

PROPOSED PARKING
23 spaces furnished
10 spaces required

SITE AREA
18,600 SQ. FT.
0.427 ACRES

Daugherty & Trautwein, Inc.
Consulting Engineers
1939 Goldsmith Lane
Louisville, Kentucky 40218