



TREES
louisville

TREESLOUISVILLE:

ENHANCING AND
PROTECTING OUR
COMMUNITY TREE
CANOPY

OUR MISSION IS TO RAISE THE PUBLIC AWARENESS OF THE VALUE OF THE COMMUNITY FOREST AND LOUISVILLE'S TREE CANOPY DEFICIT AND TO FUND TREE PLANTING IN AREAS OF GREATEST NEED.

- Education/Engagement
 - Advocacy
 - Collaboration
 - Funding/Sustaining
- 
- A decorative graphic consisting of several parallel white lines of varying lengths, slanted diagonally from the bottom right towards the top right, set against a blue background.

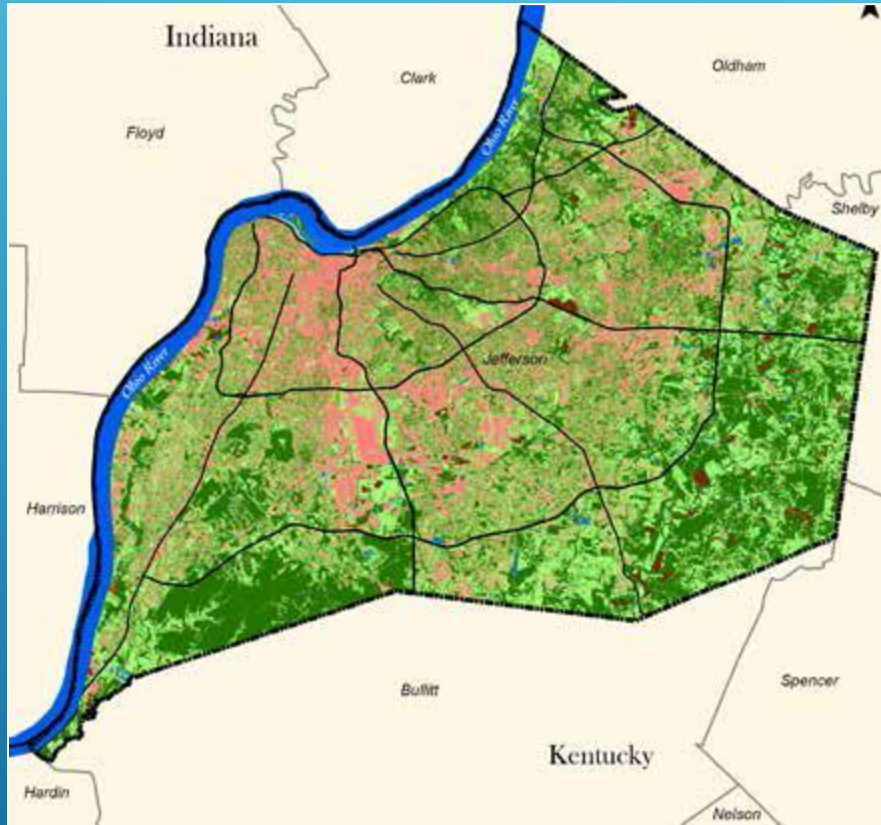


Louisville Urban Tree Canopy Assessment

DAVEY 
RESOURCE GROUP
A Division of The Davey Tree Expert Company

2015

2015 LOUISVILLE URBAN TREE CANOPY ASSESSMENT

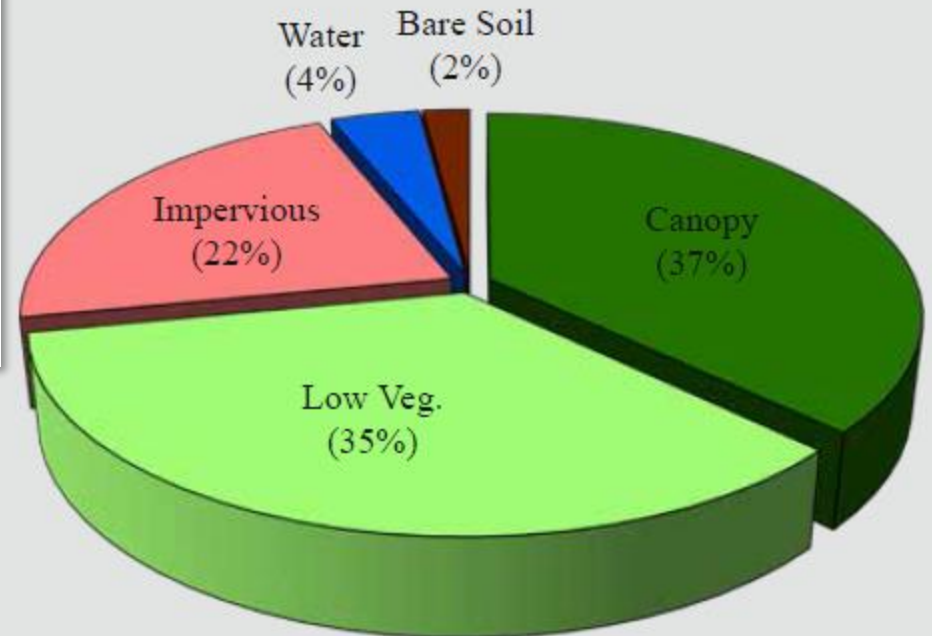


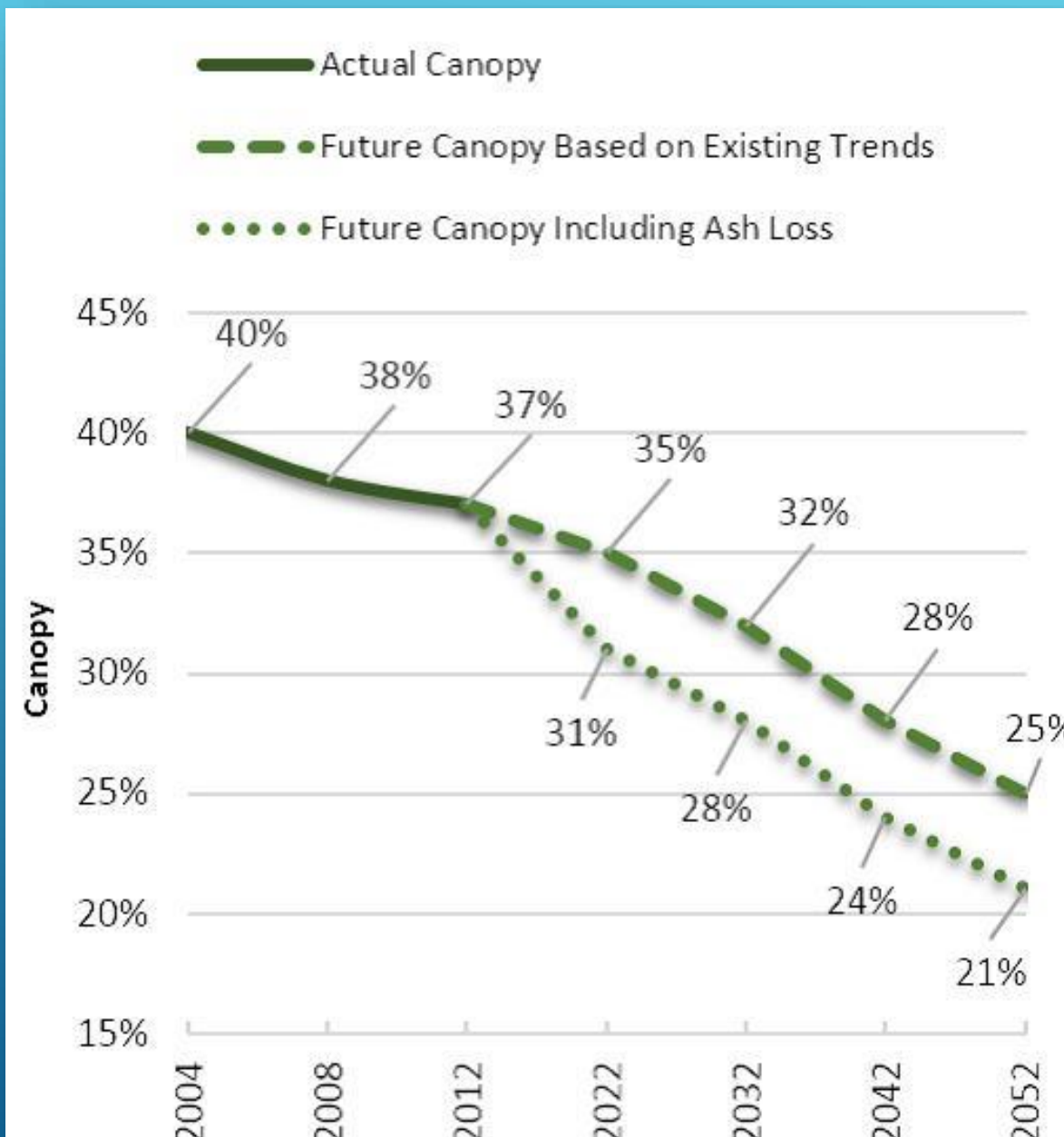
UTC: **37%**

UTC w/o Major Parks: **30%**

UTC in "Old City Limits": **27%**

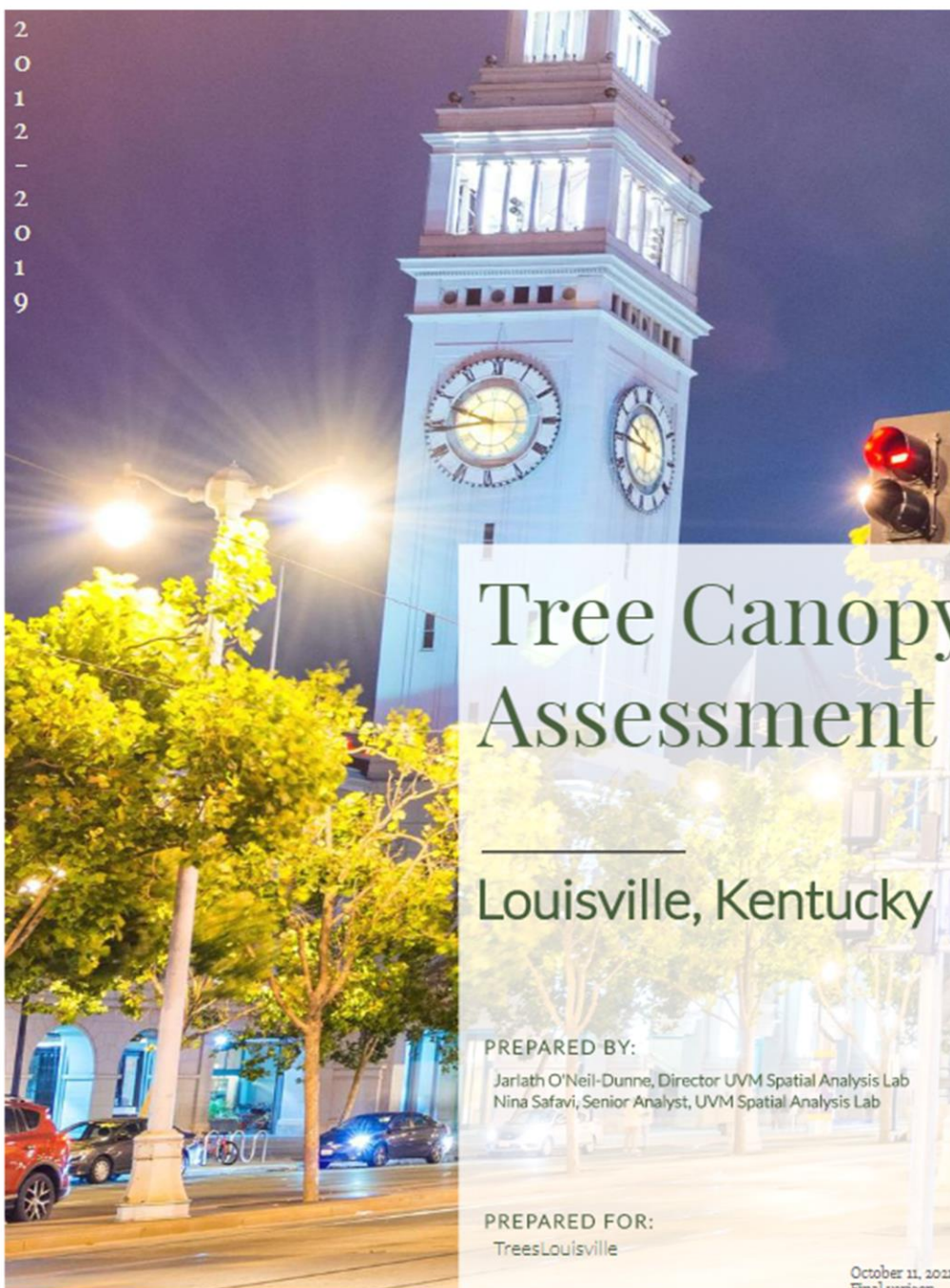
Figure 3. Louisville 2012 Land Cover





PREDICTED CANOPY LOSS

2
0
1
2
-
2
0
1
9



Tree Canopy Assessment

Louisville, Kentucky

PREPARED BY:

Jarlath O'Neil-Dunne, Director UVM Spatial Analysis Lab
Nina Safavi, Senior Analyst, UVM Spatial Analysis Lab

PREPARED FOR:

TreesLouisville

October 11, 2021
Final version

2022: NEW ASSESSMENT

(2012-2019)

2022 Louisville Urban Tree Canopy Assessment Summary



This study was carried out by the University of Vermont Spatial Analysis Lab in collaboration with TreesLouisville and was conducted using 2012-2019 canopy data from the Louisville/Jefferson County Information Consortium (LOJIC) and the USDA. This report is a follow-up to the 2015 assessment, which examined canopy changes between 2004-2012. *

39%

tree canopy coverage as of 2019

9,591 acres of canopy gain

7,365 acres of canopy loss

1%

absolute change in tree canopy from 38% in 2012 to 39% in 2019

STUDY HIGHLIGHTS



Slight overall canopy gain of 1% between 2012-2019



Street tree canopy increased by 2%



Trees planted over a decade ago experienced considerable growth, contributing to increase



Canopy loss is concentrated in more heavily urbanized areas and on private land



Although canopy coverage is holding steady, there are still considerable losses throughout Louisville



Tree canopy will likely continue to rise if removals do not outpace natural growth and new plantings

RECOMMENDATIONS



Preserving existing canopy is the most effective means for securing future tree canopy



Having trees with a broad age distribution and a variety of species will ensure that a robust and healthy tree canopy is possible over time



Community education is crucial: residents that are knowledgeable about the value and services trees provide will help Louisville stay green for years to come



Plant new trees in areas where tree canopy is low or in locations where there has been canopy loss



Cindi Sullivan

Cindi@TreesLouisville.org

TreesLouisville.org

502.648.6707

HAVE YOU
PLANTED A TREE
TODAY?