

Closest Fire Station or Unit Response in Louisville



What is Mutual Aid ?

- When a department is engaged in a large-scale incident or multiple incidents, calling a neighboring department for assistance.
- Implemented by the **Incident Commander**
- Example: Zane Street Fire - March 17, 2006
- Example: G.E. Fire – April 3, 2015



What is Automatic Aid ?

- Response into a neighboring fire district using a predetermined dispatch criteria on a routine basis.
- A request from an Incident Commander is not required
- Units function under the Home Department's Command, a Joint Command, or a Unified Command
- Unit dispatch does not require approval from on-duty supervisor

2018 Run Volume

- Jefferson County Suburban Fire = 32239 Incidents
- Louisville Division of Fire = 42758 Incidents
- Combined Total = 74,997

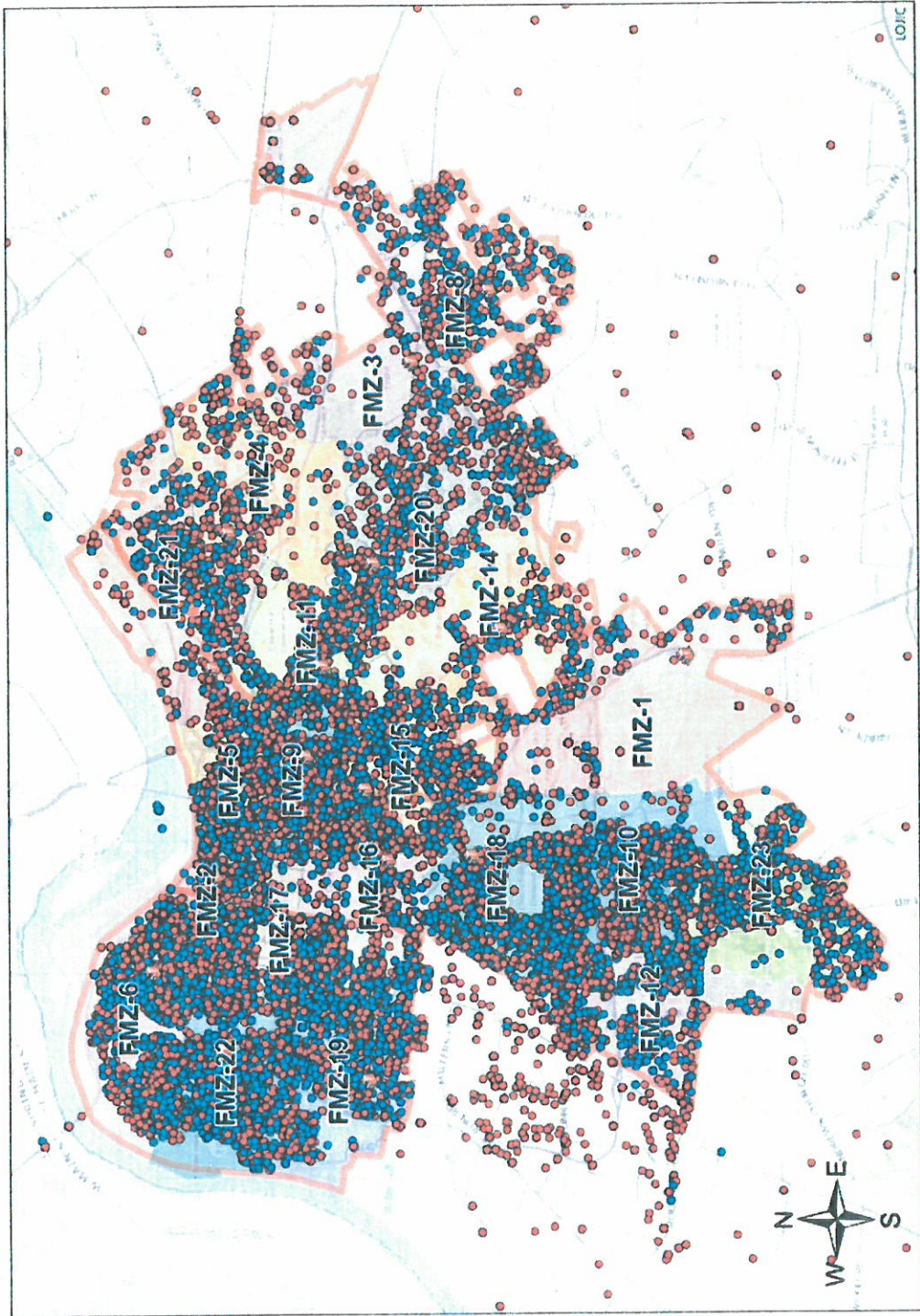
JCFD Runs for 2018 By Agency

2018	Function	Location	FIRE RUNS	MEDICAL RUNS	TOTALS
Battalion Chief 1	Supervisory/Command	First District			
Truck 4	Truck Company	3228 River Park Drive	581	14	595
Engine 22	Engine Company	3228 River Park Drive	1157	370	1527
Truck 1	Truck Company	1135 West Jefferson Street	1269	2099	3368
Engine 2	Engine Company	1135 West Jefferson Street	1340	352	1672
Rescue 2	Water/Dive Rescue	1135 West Jefferson Street	89	2	91
Engine 6	Engine Company	2500 Griffiths Avenue	1144	1518	2662
Rescue 6	Water/Dive Rescue	2500 Griffiths Avenue	14	0	14
Squirt 17	Engine Company	1824 Garland Avenue	1246	1680	2926
Engine 19	Engine Company	3501 Bohne Avenue	1021	1235	2256
HAZMAT 19	Hazardous Materials	3501 Bohne Avenue	20	0	20
		Second District			
Battalion Chief 2	Supervisory/Command	235 East Jefferson Street	656	8	664
Truck 2	Truck Company	235 East Jefferson Street	2127	400	2527
Engine 5	Engine Company	235 East Jefferson Street	2533	1987	4520
Engine 9	Engine Company	609 East Breckinridge Street	1555	1411	2966
Engine 15	Engine Company	1328 South Preston Street	1146	949	2095
Truck 3	Truck Company	1500 South Sixth Street	1899	274	2173
Engine 16	Engine Company	1500 South Sixth Street	1383	1463	2846
Engine 21	Engine Company	300 North Spring Street	597	357	954
HAZMAT 21	Hazardous Materials	300 North Spring Street	20	1	21
		Third District			
Battalion Chief 3	Supervisory/Command	501 Ashland Avenue	628	14	642
Truck 8	Truck Company	501 Ashland Avenue	1155	273	1428
Engine 10	Engine Company	501 Ashland Avenue	1343	1489	2832
Engine 1	Engine Company	1100 Grade Lane	529	406	935
HAZMAT 1	Hazardous Materials	1100 Grade Lane	49	1	50
Engine 12	Engine Company	4535 Manslick Road	927	950	1877
Quint 9	Engine & Truck	3511 Fincastle Road	854	521	1375
Engine 18	Engine Company	2600 South 4th Street	1376	1494	2870
Engine 23	Engine Company	706 Kenwood Drive	634	852	1486
		Fourth District			
Battalion Chief 4	Supervisory/Command	3401 Dutchmans Lane	381	6	387
Truck 7	Truck Company	1025 Rubel Avenue	1045	92	1137
Engine 11	Engine Company	1025 Rubel Avenue	776	604	1380
Rescue 11	Heavy Urban Rescue	1025 Rubel Avenue	16	3	19
Engine 4	Engine Company	2670 Frankfort Avenue	764	814	1578
Quint 10	Engine & Truck	3401 Dutchmans Lane	987	568	1565
Engine 8	Engine Company	2800 Hikes Lane	707	785	1492
Engine 20	Engine Company	1735 Bardstown Road	874	631	1505
Rescue 45	Aircraft Fire/Rescue	3401 Dutchmans Lane	0	0	0
2018	Incidents		35941	25203	61144
TOTALS	42790				

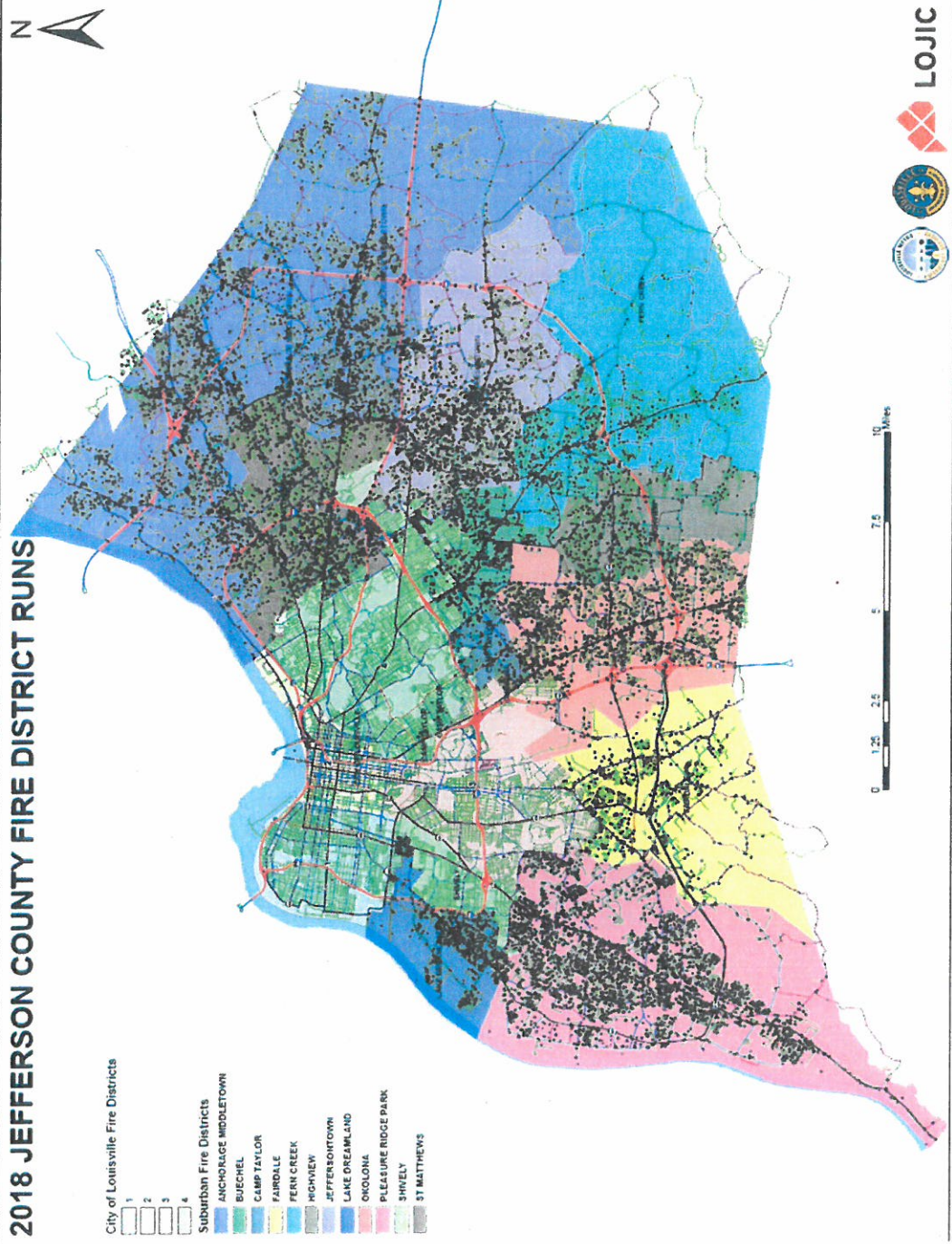
Count Of Runs

Anchorage FD	36
Buechel FD	1842
Camp Taylor FD	355
Eastwood FD	577
Fairdale FD	1235
Fern Creek FD	1014
Harrods Creek FD	1574
Highview FD	793
Jeffersontown FD	3679
Lake Dreamland FD	1553
Lyndon FD	589
McMahan FD	501
Middletown FD	3079
Okolona FD	2921
Pleasure Ridge Park FD	6956
St Matthews FD	3385
Worthington FD	2150
Grand Total	32239

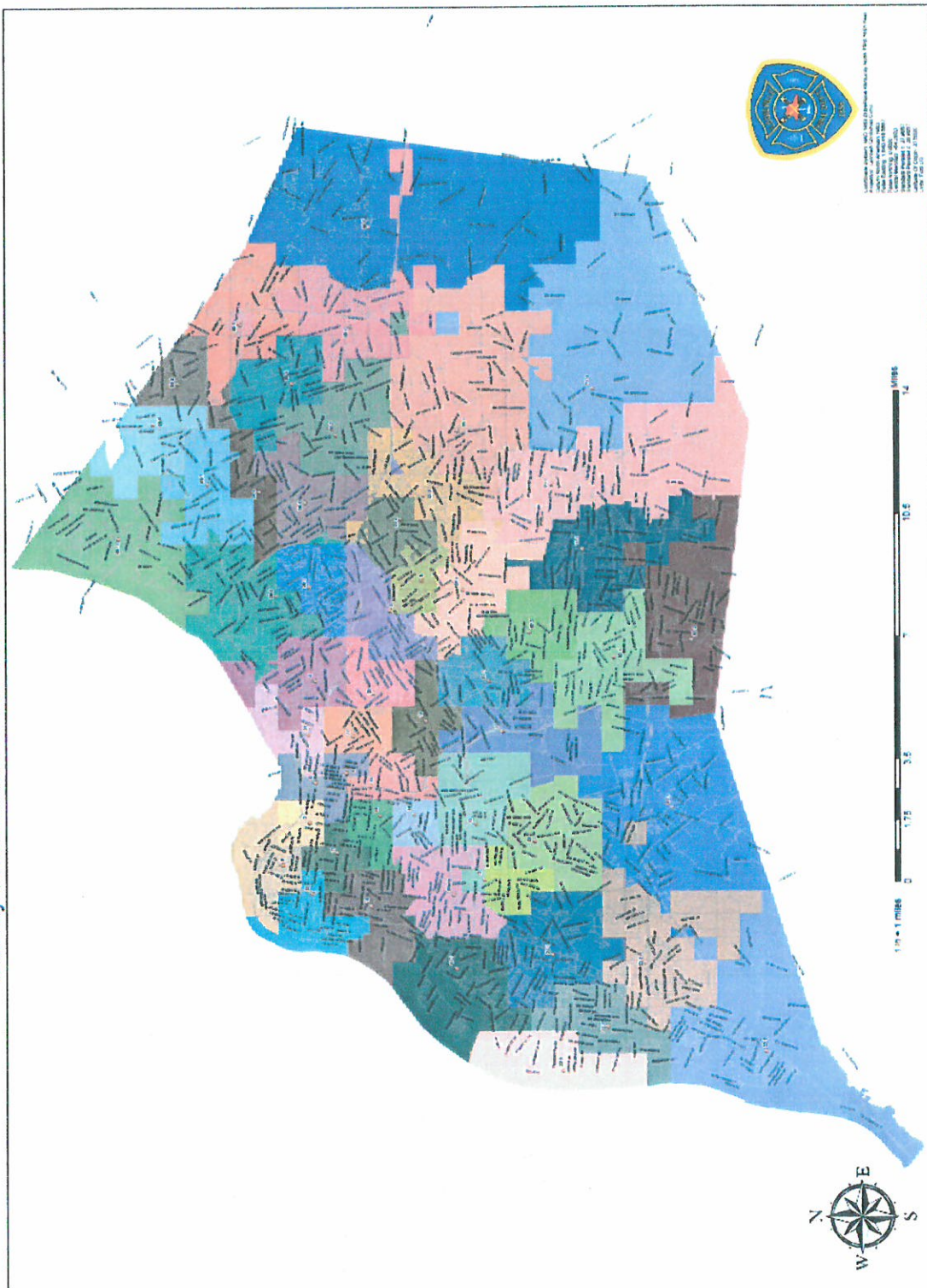
LFD - 2018 Incidents (42,758)



2018 JEFFERSON COUNTY FIRE DISTRICT RUNS



County Wide Staffed Fire Stations and First Due Areas



What is needed ?

- Authorization to Participate
- Extent of resources to be sent – One Unit, Two Units, etc. ?
- Written Agreement with Indemnification Language
- Would it include all run types or just high-priorities?
- Is the response in conjunction or in lieu of the home department?

Requirements

- Staffing Levels at NFPA 1710 Standards
- Rapid Intervention Team Deployment
- OSHA Two-In, Two-Out Regulation
- Training & Certifications
- Incident Command & Safety
- Firefighter Accountability Systems
- Standard Operating Procedures
- Special Considerations to limit resource reduction

Potential Challenges

- Currently there are two different Fire layers in the Computer Aided Dispatch System
- Two Separate Dispatch Areas
- Different Methods for Dispatch, digital versus sequential tones
- LFD Status Tracks units “In Quarters, On the Air, etc. ?
- Can an Interface be created that would allow cross-boundary response?

Potential Challenges

- Would every Department or District participate?
- Can the CAD designate or restrict the number of resources sent?
- Resource Typing – All Units don't carry the same equipment.
- Vehicle/Apparatus Numbering Systems are different.
- High Volume periods such as Severe Weather, leap-frogging.

Potential Challenges

- Jurisdictions that have fewer Fire Resources
- Single Key Entry Systems (Knox boxes)
- Access to Building Information – Right to Know Law
- Labor-Management Agreement – Jurisdiction
- Access to Incident Reports
- District Familiarization and Knowledge of Building Information

Affects on ISO and Accreditation

CFAI Accreditation is heavily weighted in the Standard of Cover for Response Times and Effective Response Force Achievement.

Would the responding department's ISO Rating affect the rating of the home department?

Summary

- Closest Unit/Station is a good concept, however it must be implemented within a framework that provides governance and administration to ensure coverage, response, policies, and operations are not compromised.
- In order to implement a system that crosses boundaries, a Uniformed Fire Officer would be needed within the dispatch center to oversee the fire system 24/7.

