

L. JR & TAMMY DARNELL  
DB 8637, PG 865

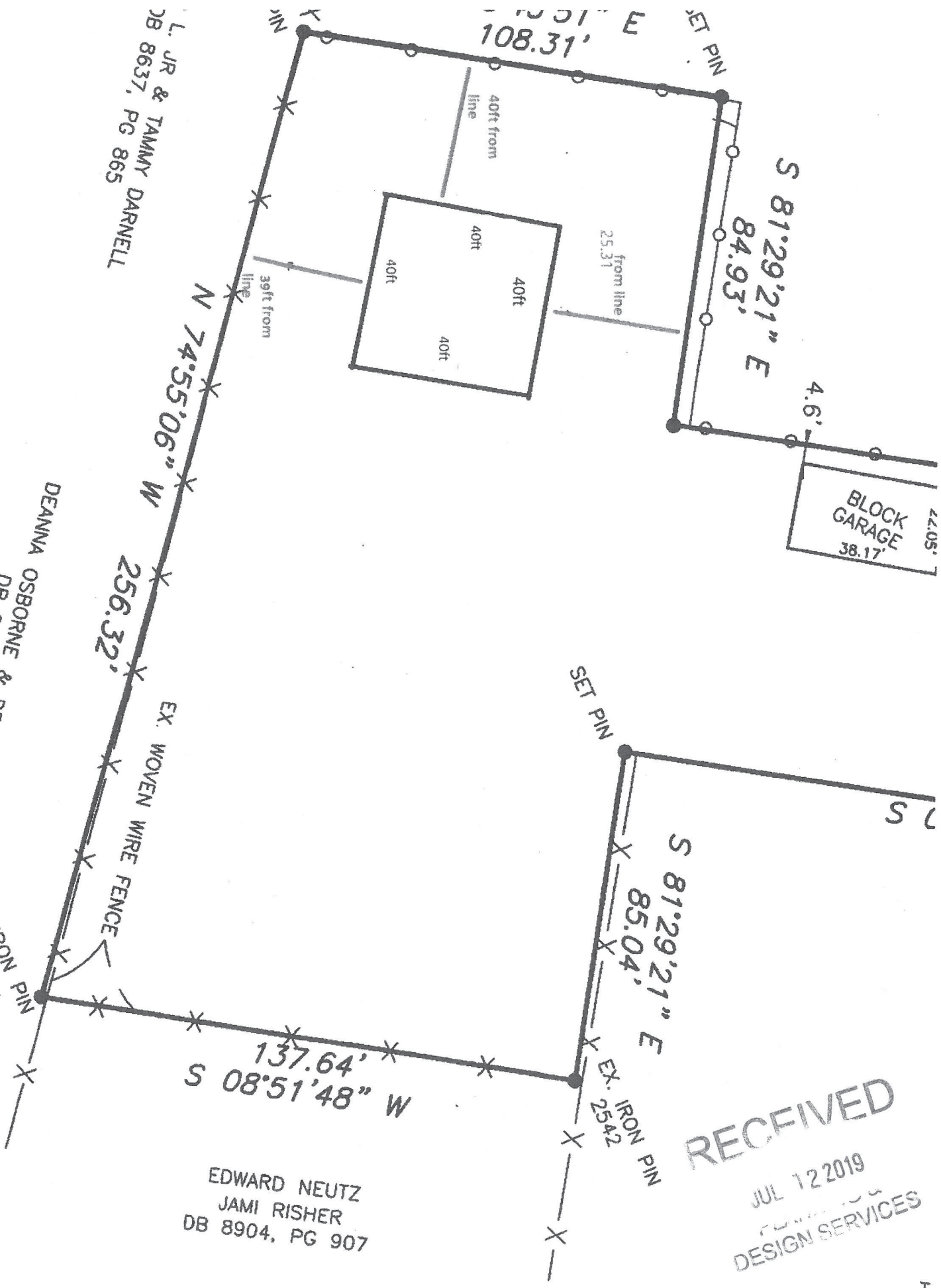
DEANNA OSBORNE & DEANNA JENKINS  
DB 8374, PG 333

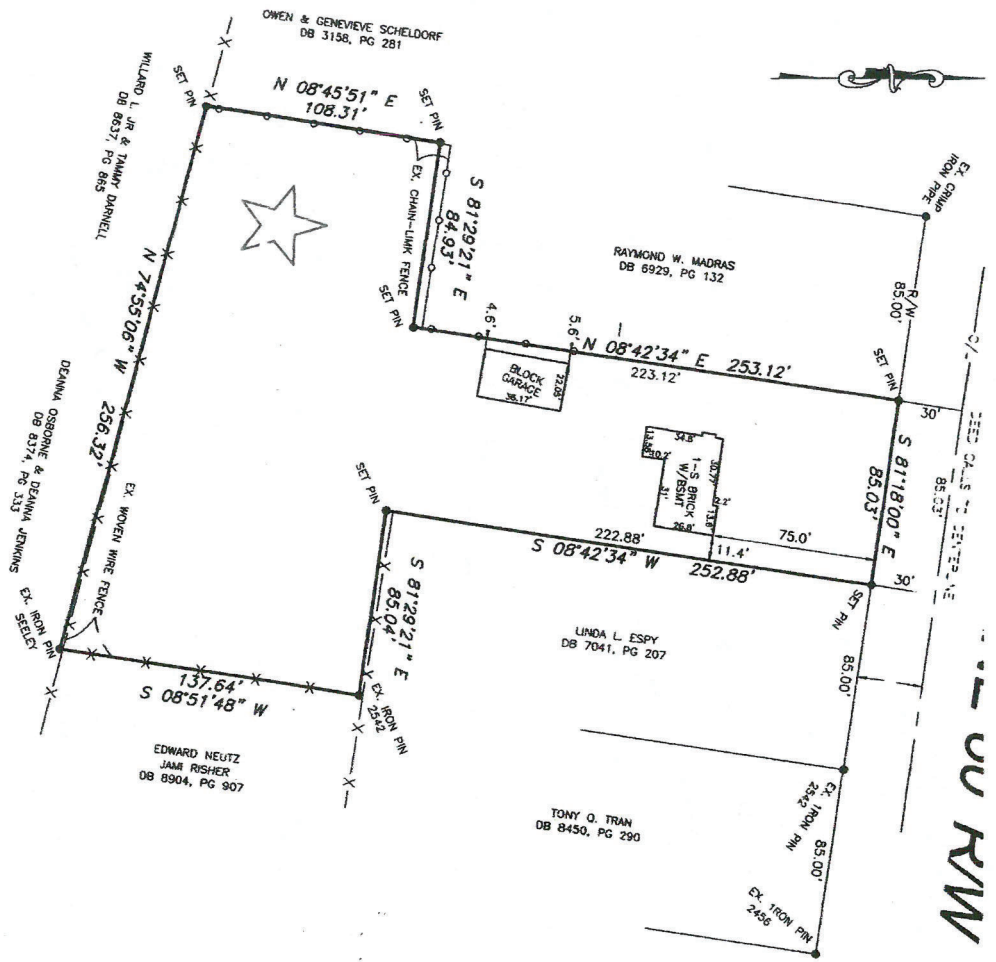
EX. IRON PIN  
SEELEY

EDWARD NEUTZ  
JAMI RISHER  
DB 8904, PG 907

RECEIVED  
JUL 12 2019  
DESIGN SERVICES

DB





• SET 1/4" x 1/8" IRON PIN W/CAP  
 MATHERLY 2179" UNLESS NOTED OTHERWISE.

**LAND SURVEYOR'S CERTIFICATE**

I HEREBY CERTIFY THAT THIS PLAT AND SURVEY WERE MADE UNDER MY SUPERVISION AND THAT THE ANGULAR AND LINEAR MEASUREMENTS AS WITNESSED BY MONUMENTS SHOWN HEREON, ARE TRUE AND CORRECT TO THE BEST OF MY KNOWLEDGE AND BELIEF. THIS SURVEY AND PLAN MEETS OR EXCEEDS THE MINIMUM STANDARDS OF GOVERNING AUTHORITIES.

DATE: 12/13/2007  
 SURVEYOR: D. M. Matherly  
 PLS# 2179

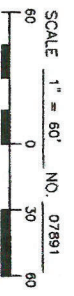
DATE

OWNERS: NATHAN GOFF  
 19200 HUDSON LANE  
 LOUISVILLE, KY 40291  
 D.B. 9127, PG 188  
 TAX BLOCK 0559, LOTS 42, 168 & 178

★ = location of barn



**MATHERLY**  
 LAND  
 CONSULTANTS  
 1302 TYCOON WAY  
 LOUISVILLE, KY 40213  
 (502) 483-9070



PLAT DATE:  
 12/13/2007  
 SURVEY DATE:

RECEIVED  
 JUL 12 2019  
 DESIGN SERVICES

9 WAIVER 0021