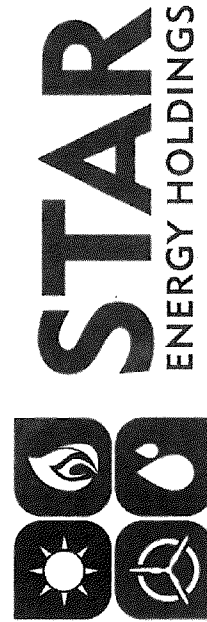




Nature's Methane

— HOLDINGS —



Mark Stoermann
Chief Operating Officer
(219) 712-3511
mstoerm@stardistributedenergy.com

119

Neighborhood Meeting Agenda

Jefferson AD II Project

Introductions

Sign-up Sheet

Participants

Jefferson I Neighborhood Meeting

Review of Concerns

Anaerobic Digester Presentation

Who is STAR Energy and Nature's Methane?

Why Anaerobic Digestion?

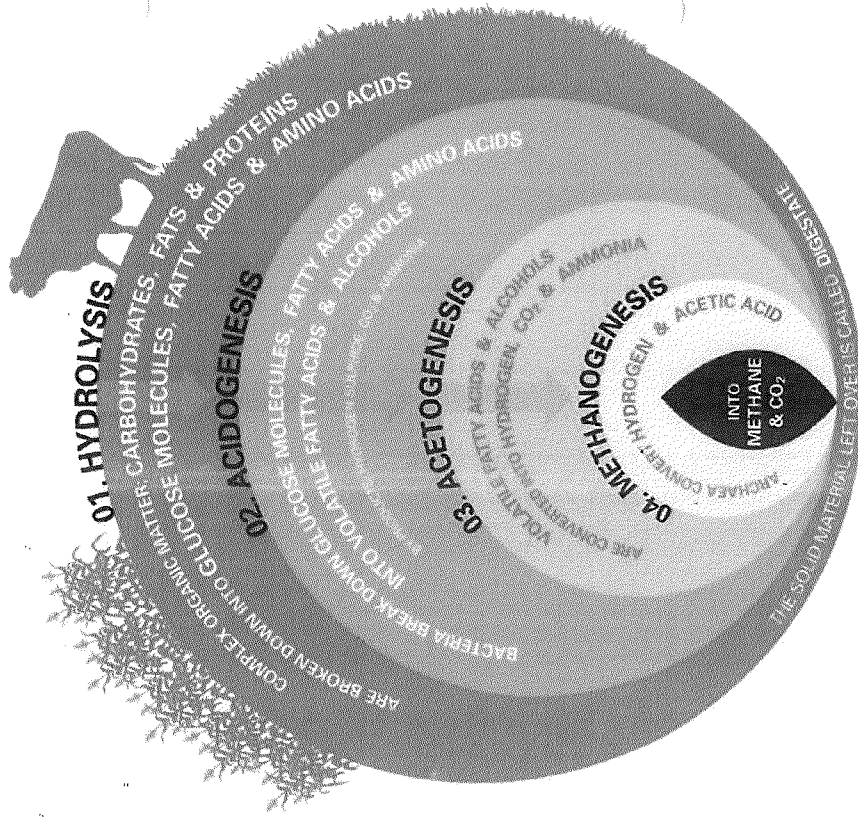
Overview of Technology and Process

Overview of Urban Digesters

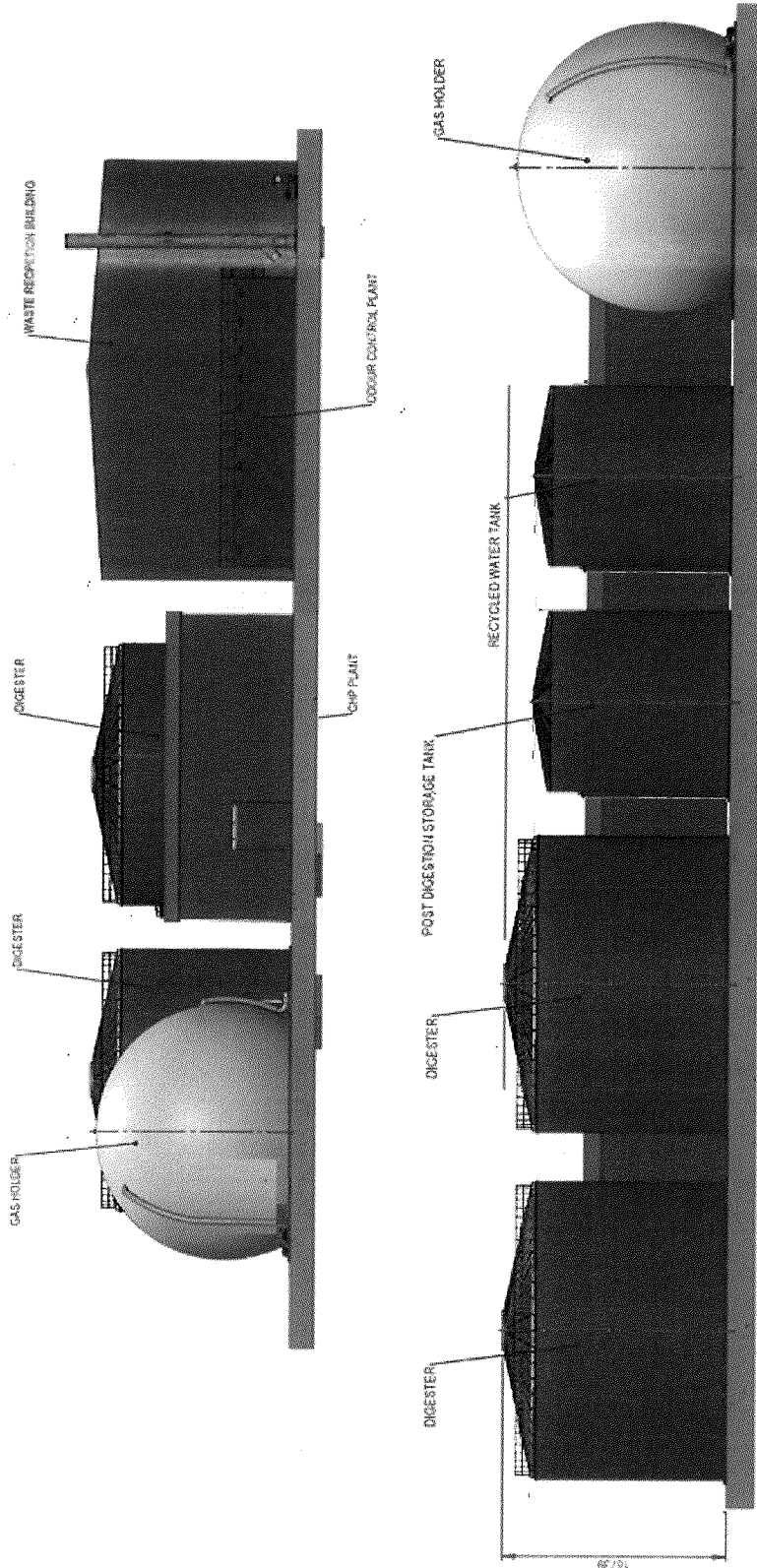
Question and Answer Period



Nature's Methane HOLDINGS



621



121

6/22/2015



Nature's Methane
— HOLDINGS —

15CU1023

122

6/22/2015

Urban Digester Locations



Nature's Methane
— HOLDINGS —

15CU1023

© 2015 Nature's Methane – Confidential & Proprietary

124

6/22/2015

Urban Digester Locations



15CU0023

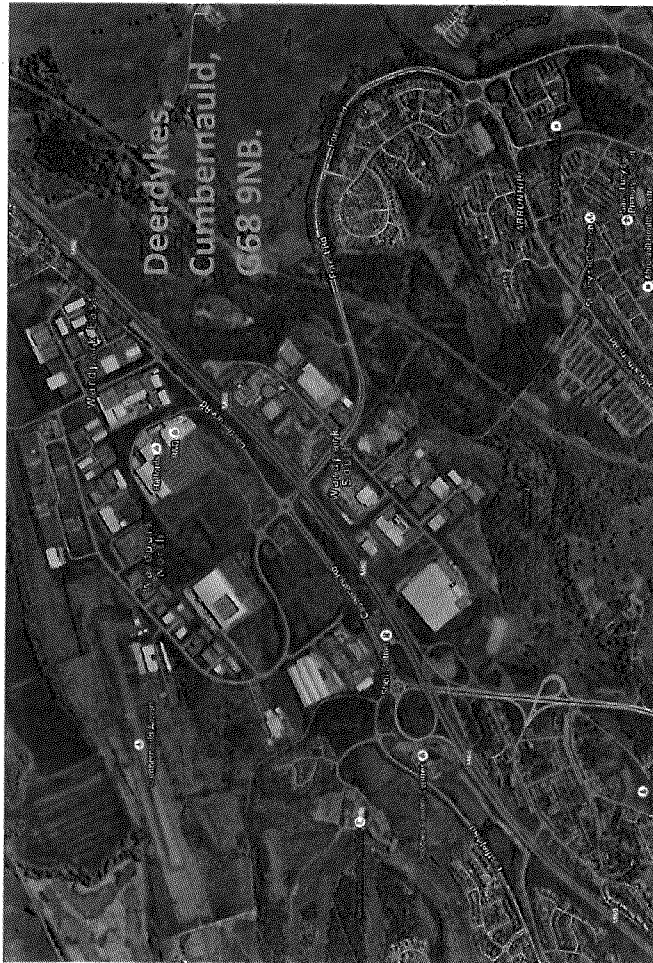
Nature's Methane
— HOLDINGS —

© 2015 Nature's Methane – Confidential & Proprietary.

125

6/22/2015

Urban Digester Locations



15CU11023

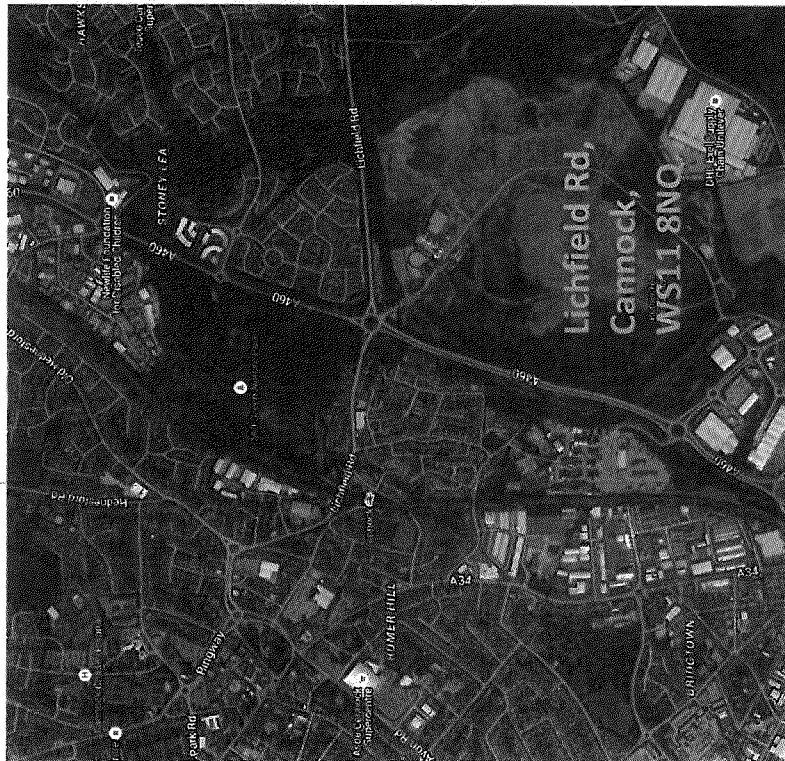
Nature's Methane
— HOLDINGS —

© 2015 Nature's Methane – Confidential & Proprietary

124

6/22/2015

Urban Digester Locations



15CU1023

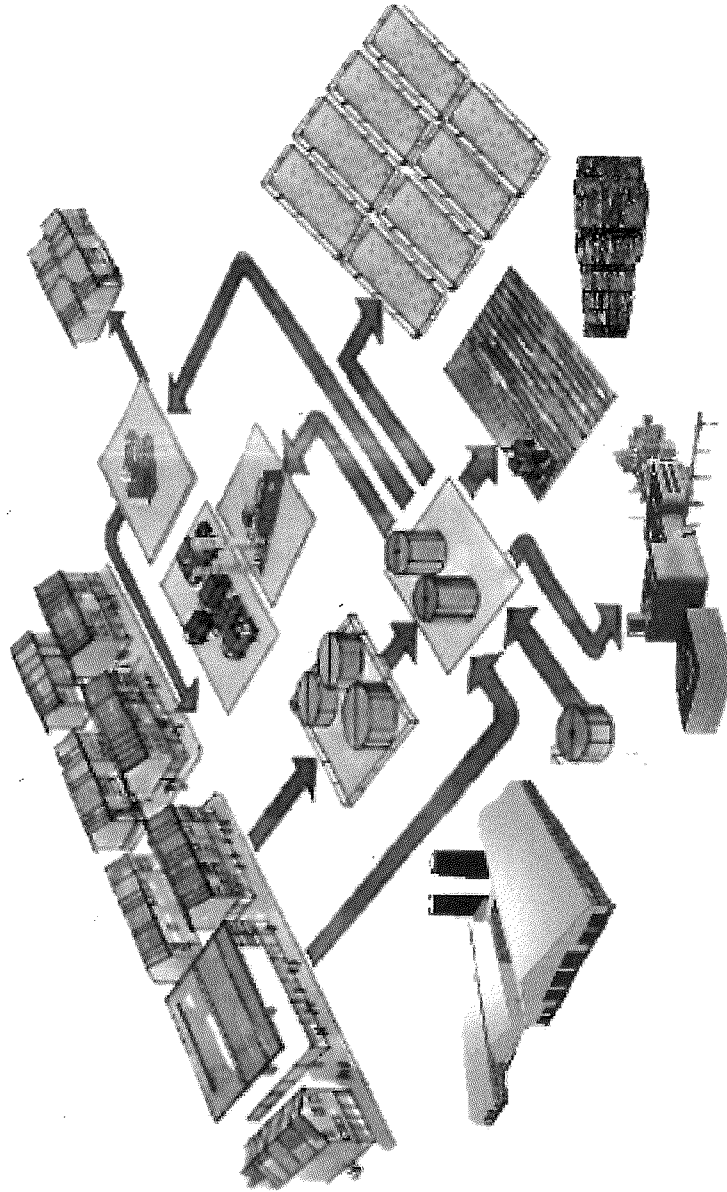
Nature's Methane
— HOLDINGS —

© 2015 Nature's Methane — Confidential & Proprietary

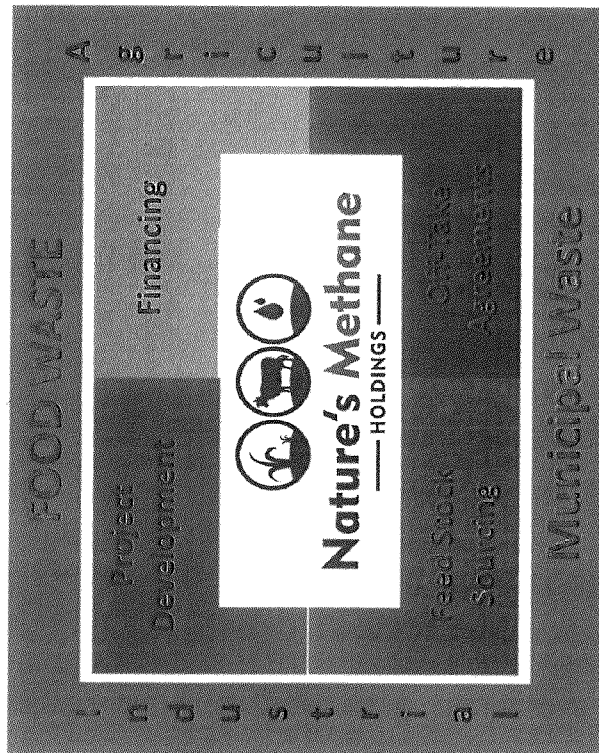
127



Sustainable Integrated Production



Benefits for All Stakeholders



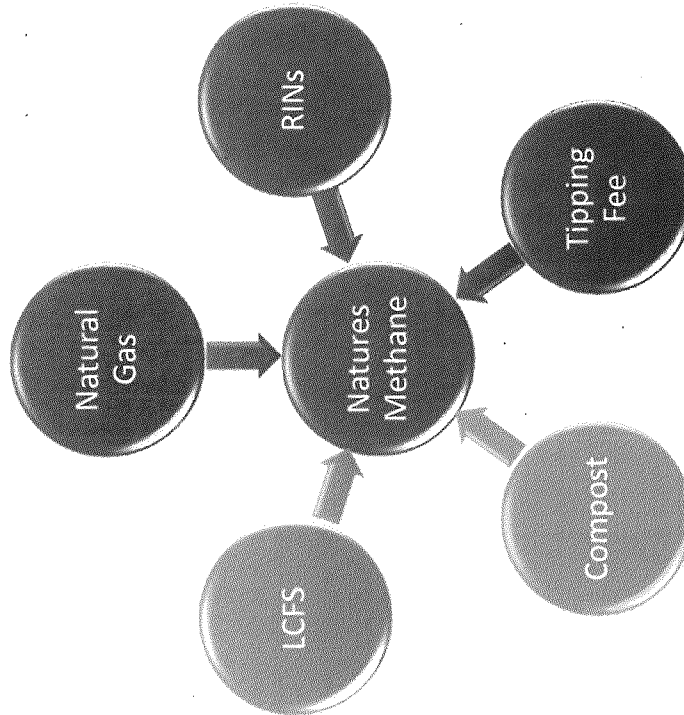
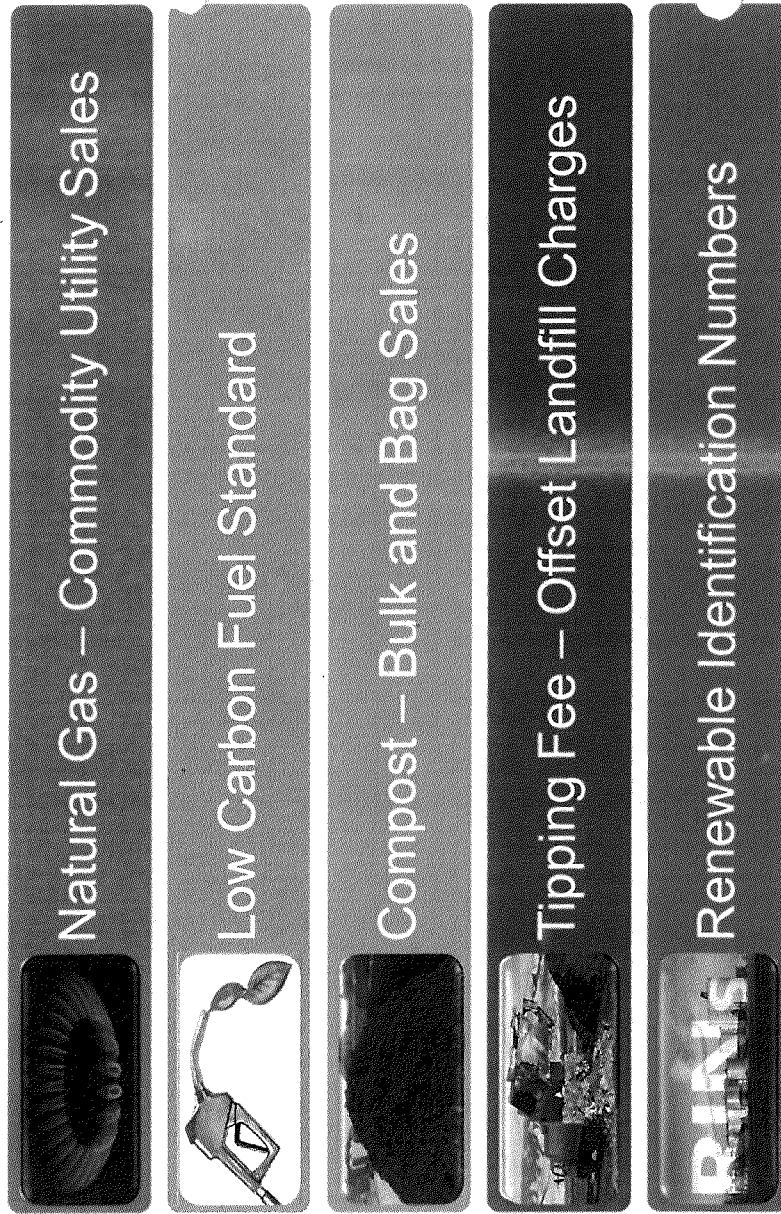
Waste Converted to Value Added Products



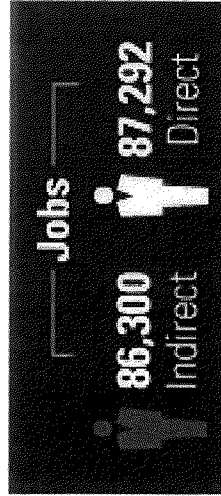
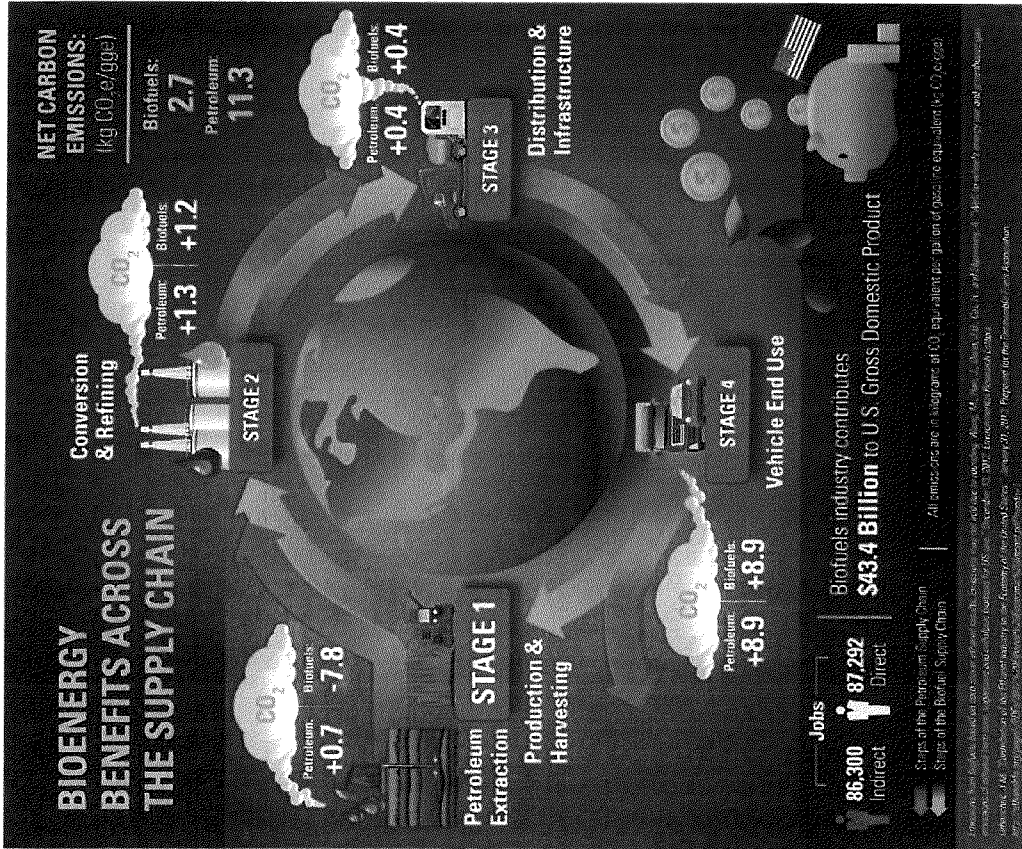
Nature's Methane
—HOLDINGS—

128

Value Added Revenue Streams



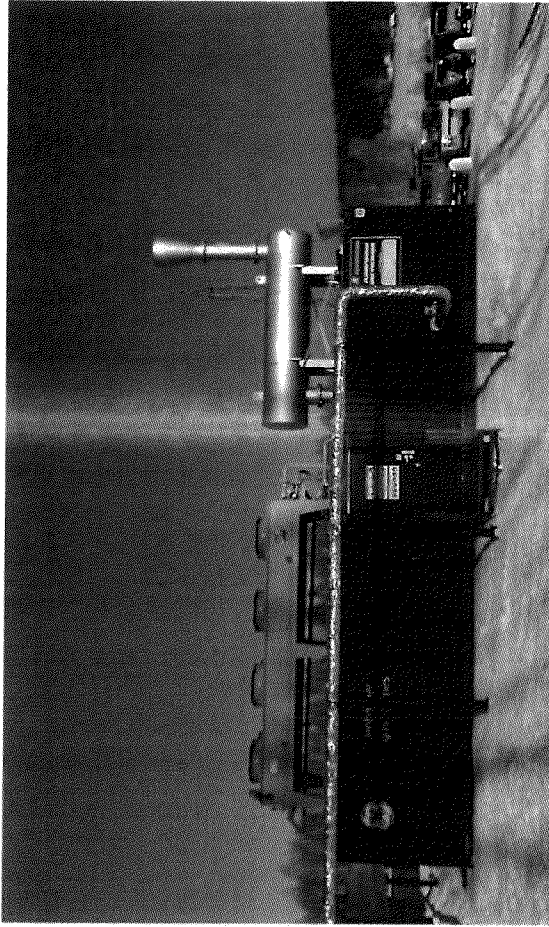
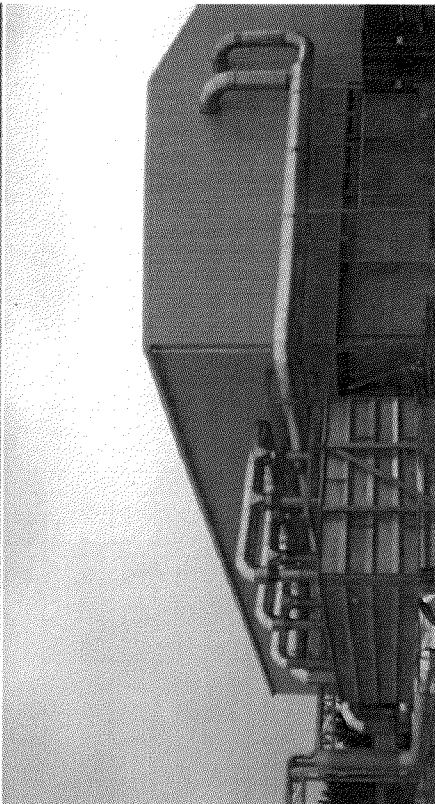
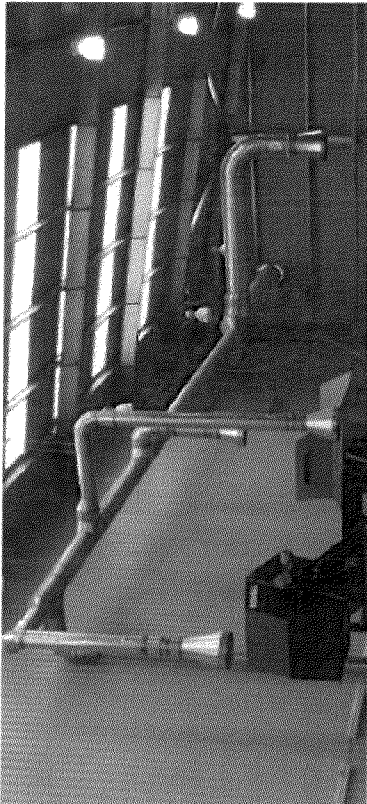
129



15CU01023

130

6/22/2015

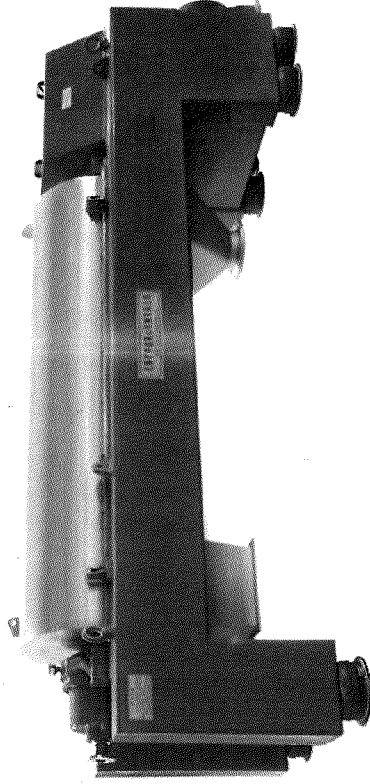
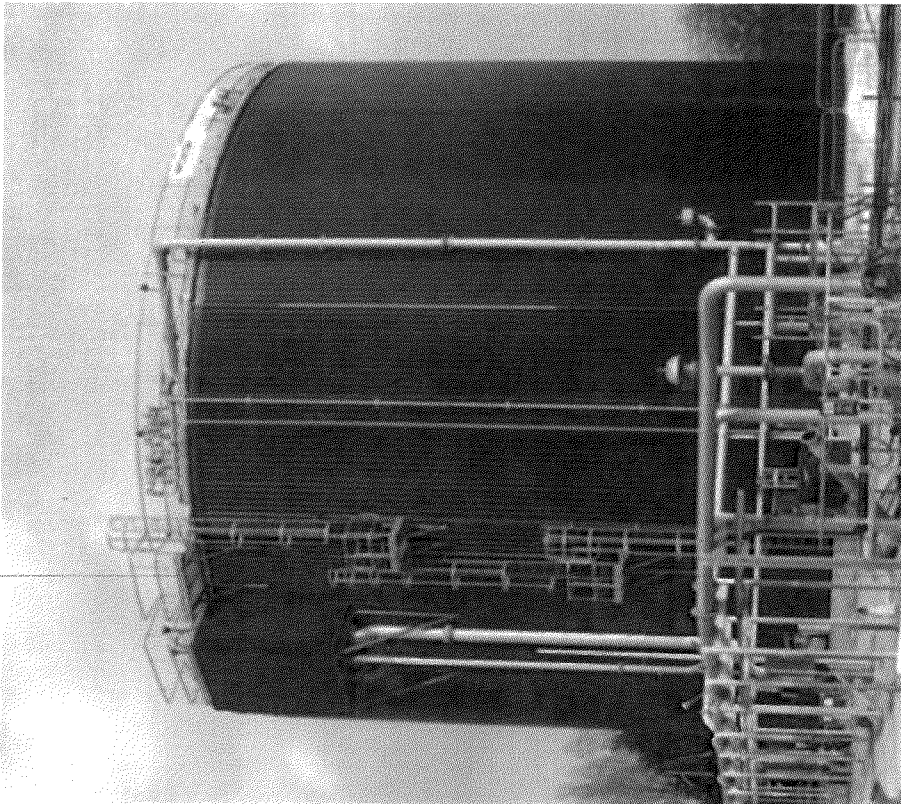


15CUM1023

© 2015 Nature's Methane – Confidential & Proprietary

131

6/22/2015



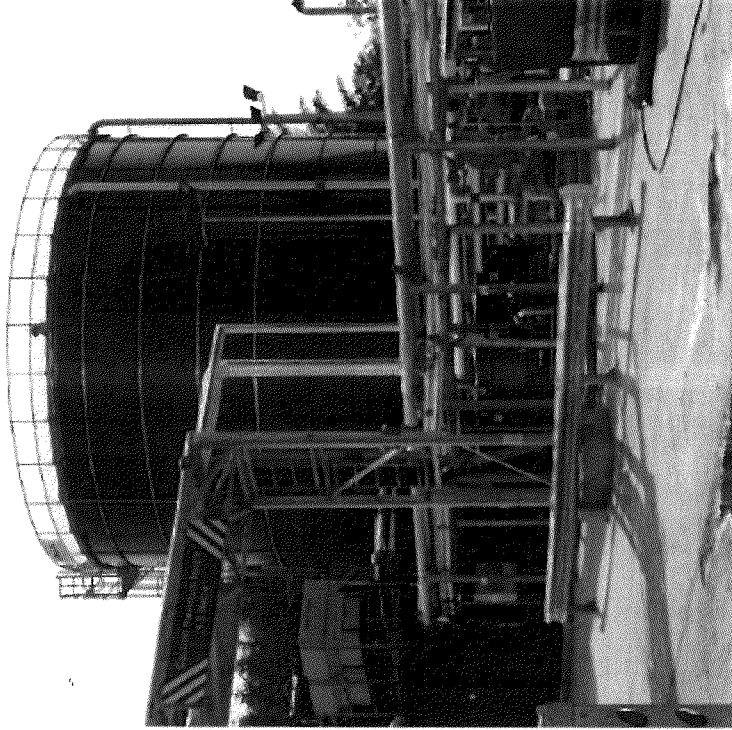
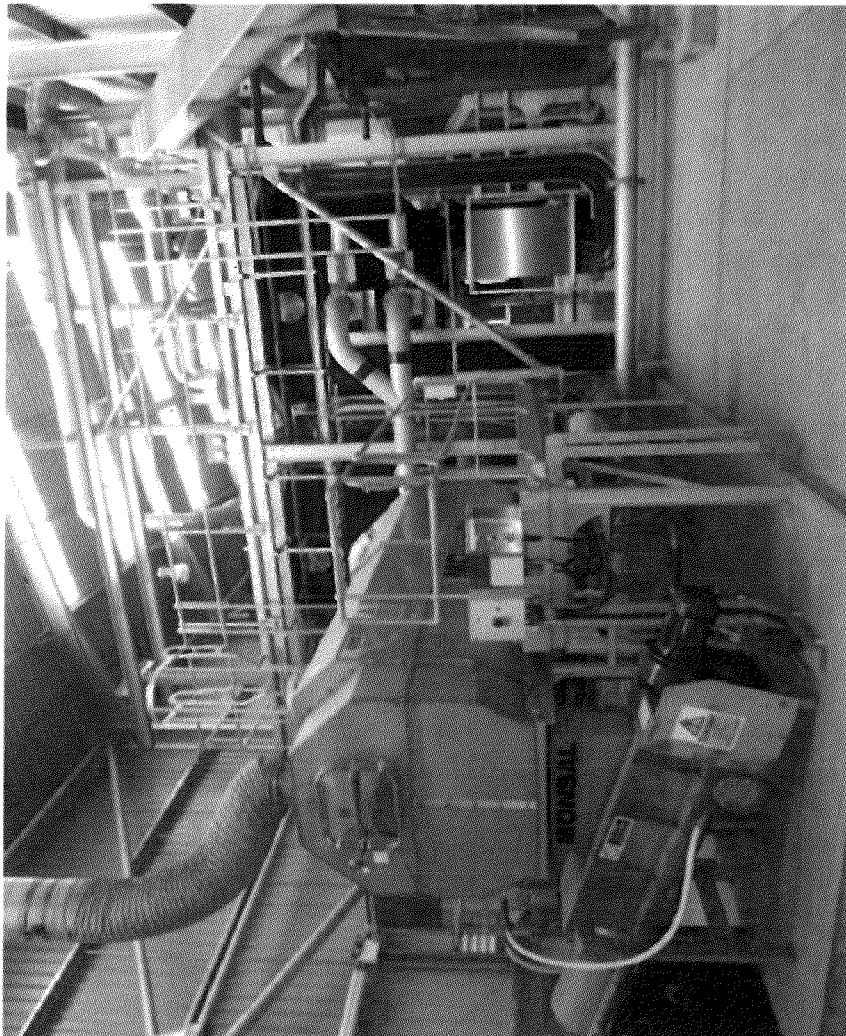
Nature's Methane
— HOLDINGS —

15CU11023

© 2015 Nature's Methane – Confidential & Proprietary

132

6/22/2015



15CU023

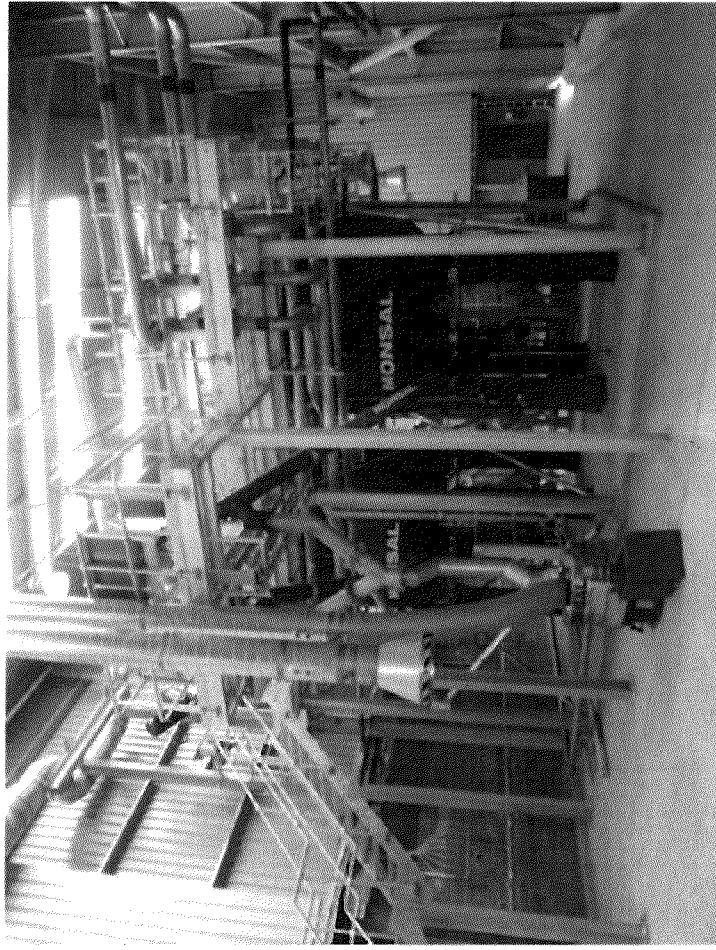
Nature's Methane
— HOLDINGS —

© 2015 Nature's Methane — Confidential & Proprietary

17

133

6/22/2015



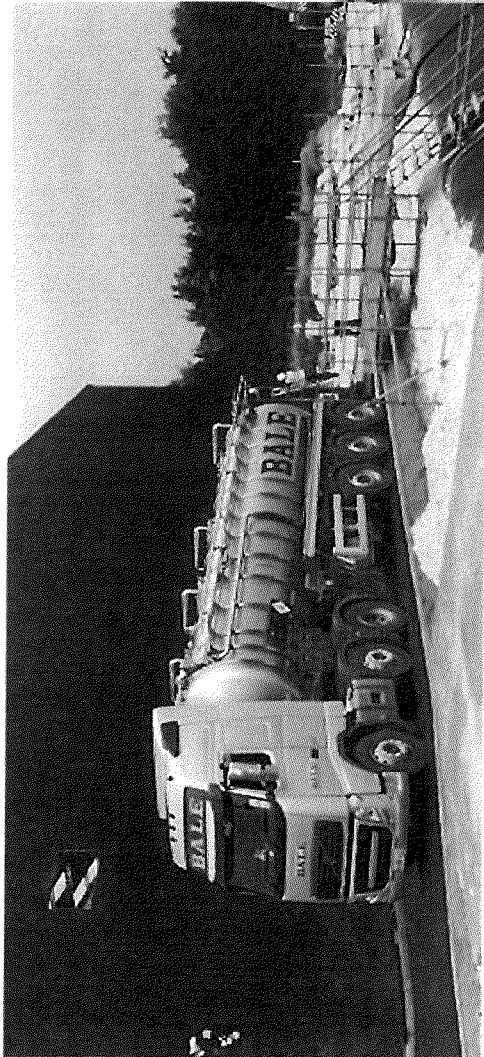
Nature's Methane
— HOLDINGS —

15CUD1023

© 2015 Nature's Methane – Confidential & Proprietary

134

6/22/2015



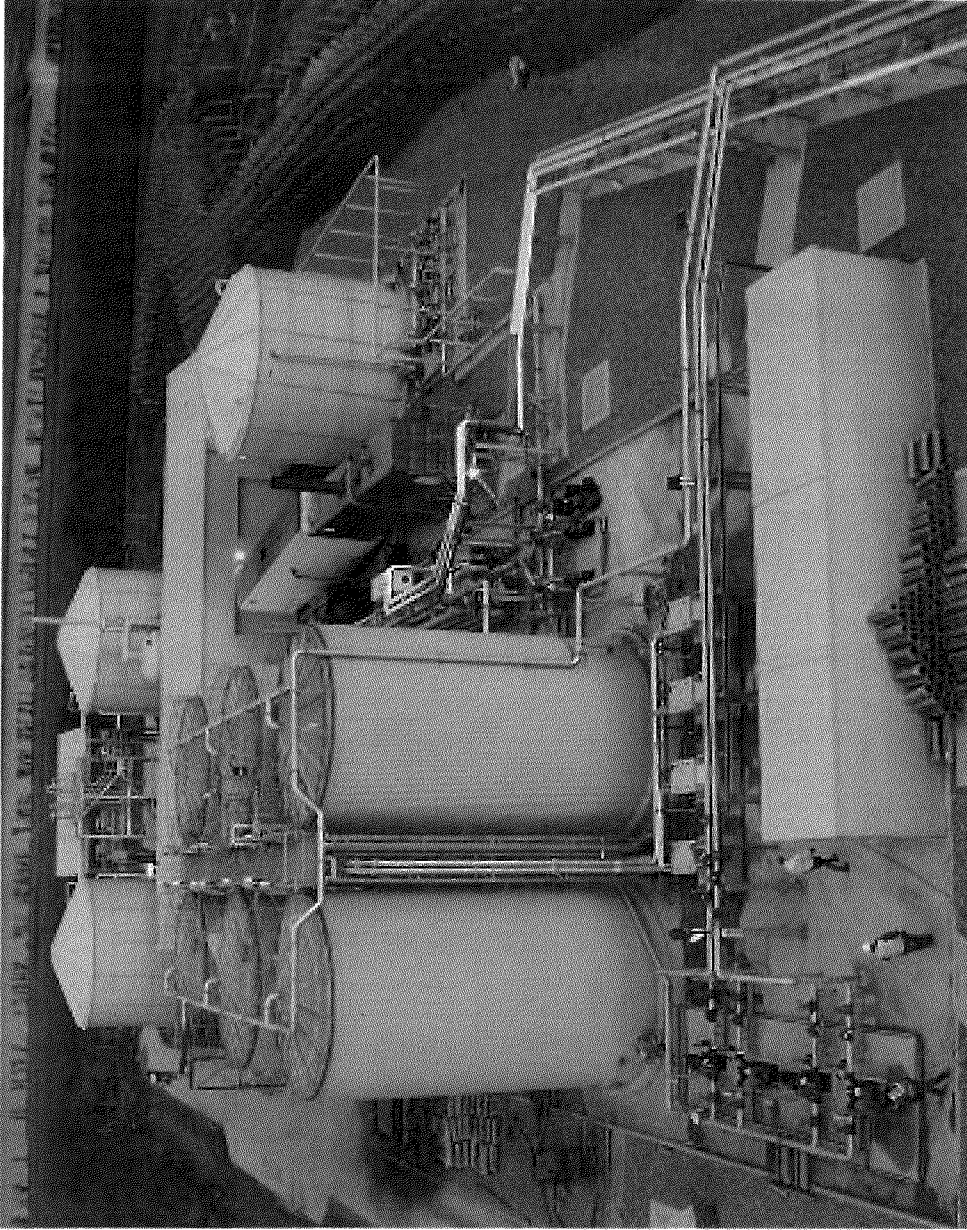
Nature's Methane
— HOLDINGS —

15CUB1023

© 2015 Nature's Methane — Confidential & Proprietary

135

6/22/2015



Nature's Methane
— HOLDINGS —

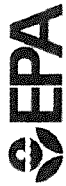
15CU1023

© 2015 Nature's Methane – Confidential & Proprietary

134



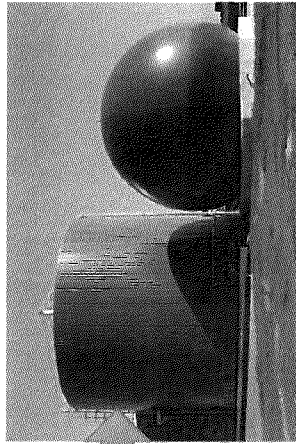
United States Department of Agriculture



United States Environmental Protection Agency

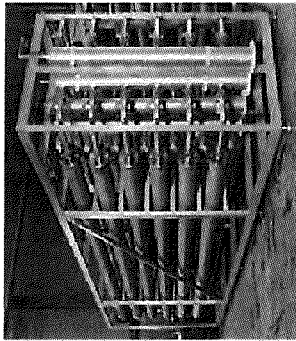


Organic material is delivered to the digester system

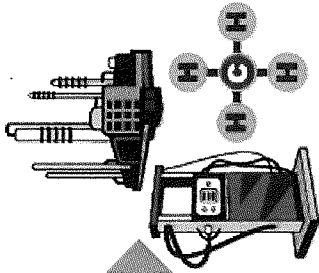


Organic material is broken down in a digester

Biogas



Raw biogas is processed



Processed biogas is distributed and used



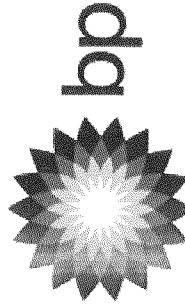
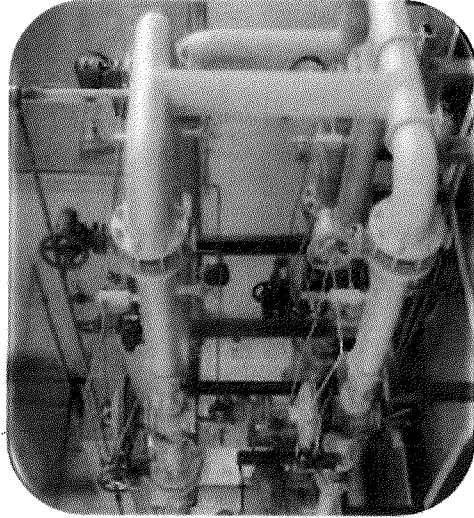
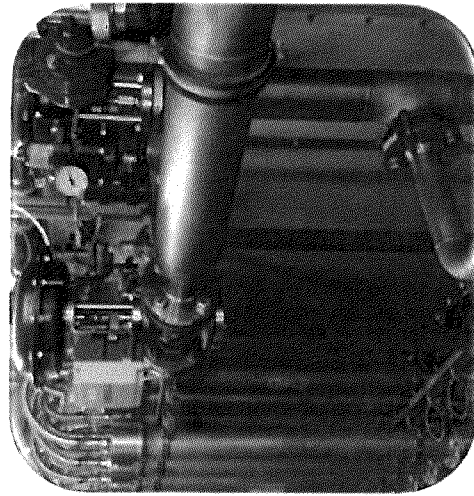
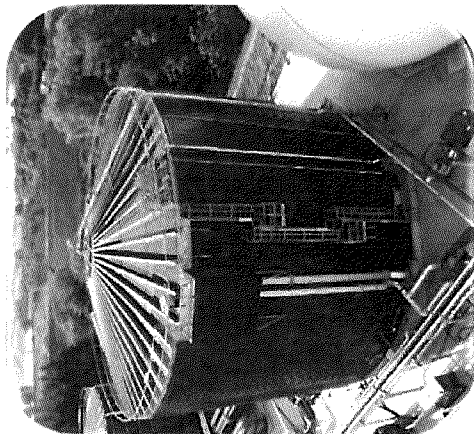
Digested material is processed and distributed



Nature's Methane Holdings

6/22/2015

Strategic Partnerships



Nature's Methane
— HOLDINGS —

15CUP1023

© 2015 Nature's Methane – Confidential & Proprietary

138

Commercial Anaerobic Digesters (Country's Sized to Same Scale)



Germany



8,000

United States of America



300

European Union



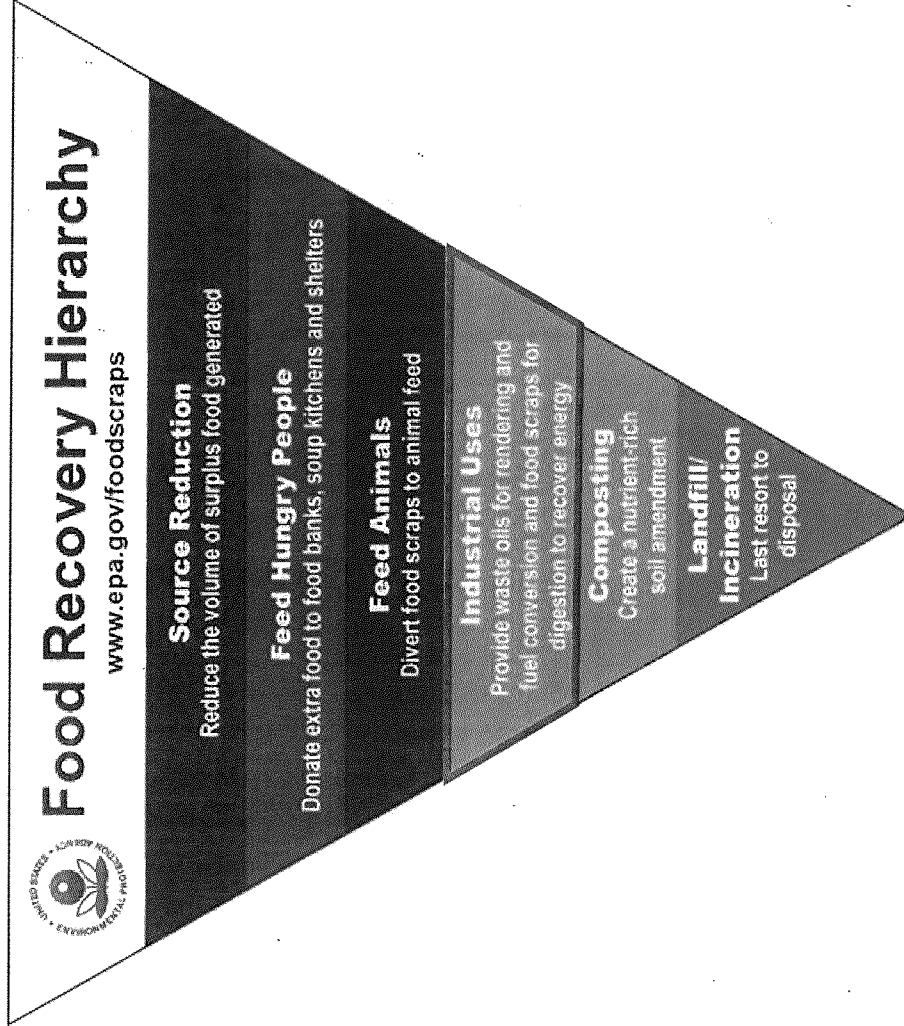
10,000



Nature's Methane
— HOLDINGS —

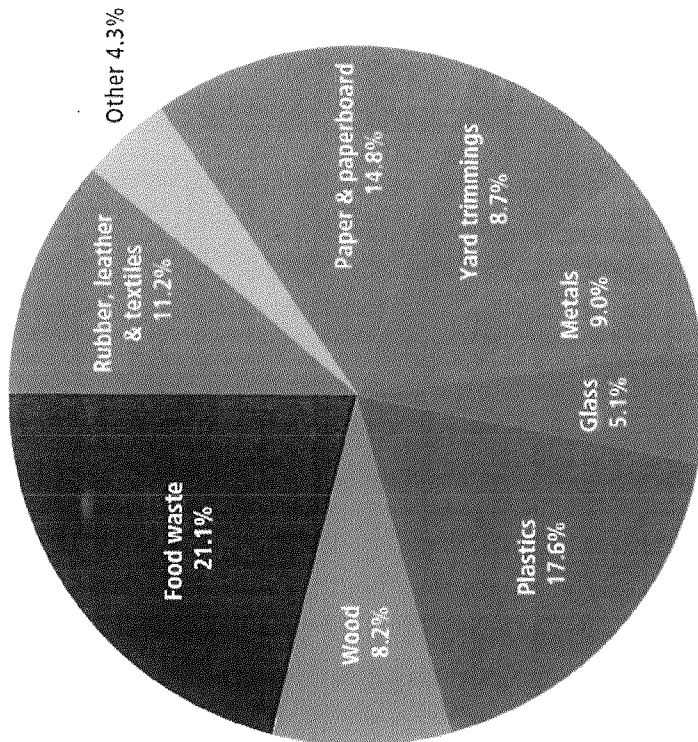
139

Why Anaerobic Digesters?



140

Figure 7. Total MSW Discards (by material), 2012
164 Million Tons (after recycling and composting)



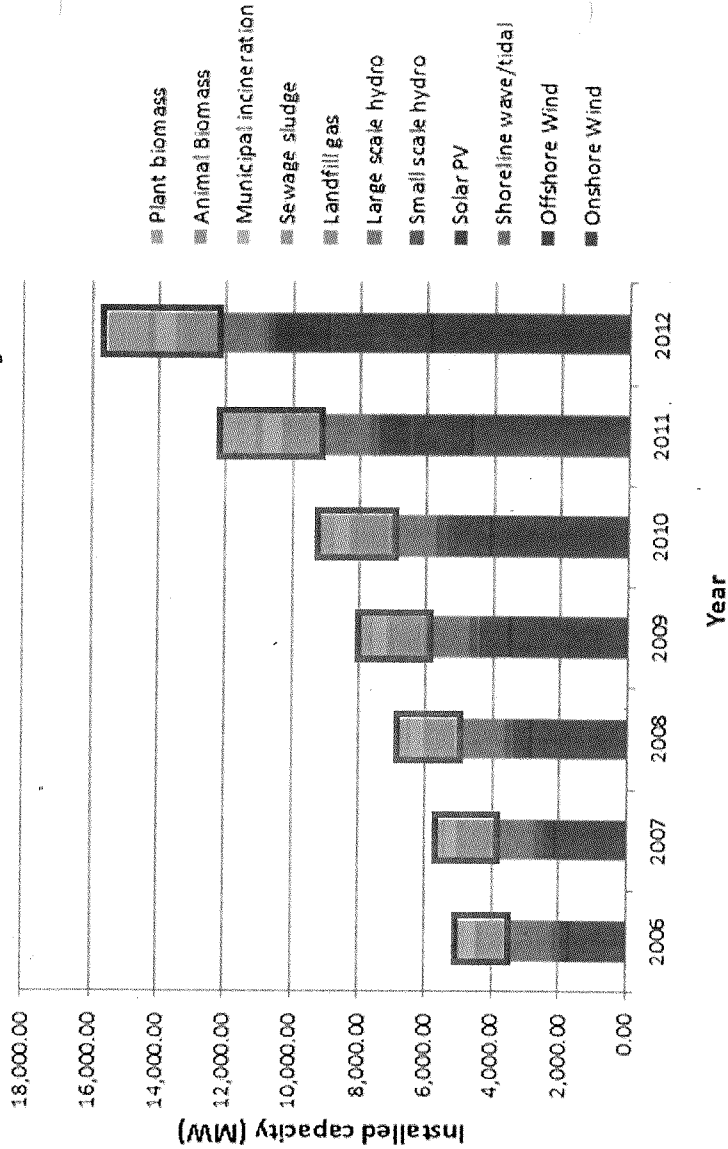
Source: Municipal Solid Waste Generation, Recycling, and Disposal in the United States: Facts and Figures for 2012



15C1023

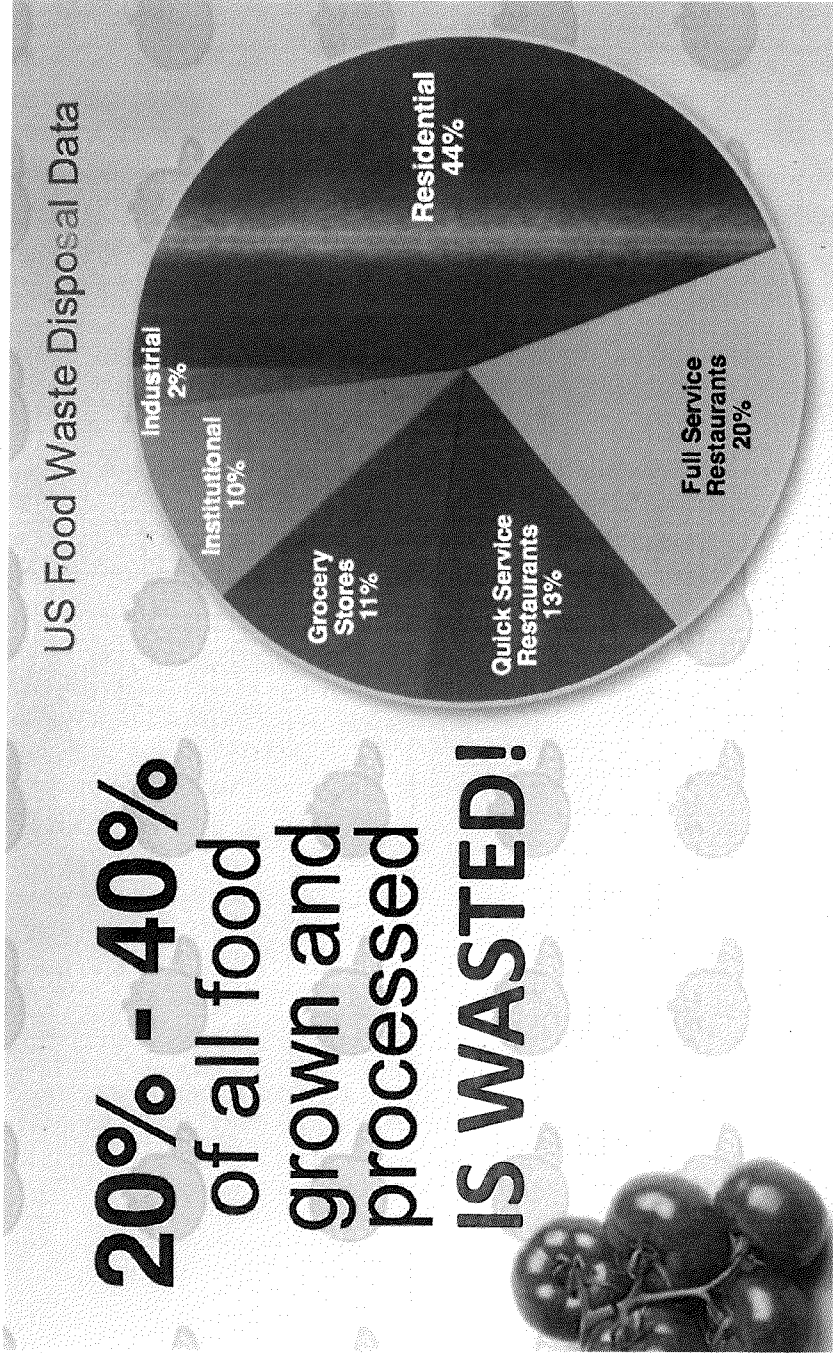
Nature's Methane
— HOLDINGS —

Installed Renewable Generation by Year

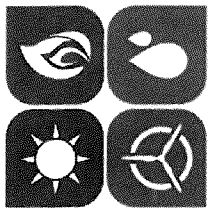


141

Why Anaerobic Digesters?



142



STAR
ENERGY HOLDINGS



Nature's Methane
—HOLDINGS—
Anaerobic Digesters

WESCO WIND

Utility-scale
Distributed Wind



STAR CNG
—HOLDINGS—
CNG filling stations

STAR SOLAR
—HOLDINGS—
Photovoltaic Solar

“Our mission is to provide Sustainability Through Active Renewables with Integrity, Innovation, and Stewardship for future generations.”

© 2015 Nature's Methane – Confidential & Proprietary

143



Neighborhood Meeting Agenda

Jefferson AD II Project

Introductions

Sign-up Sheet

Participants

Jefferson I Neighborhood Meeting

Review of Concerns

Anaerobic Digester Presentation

Who is STAR Energy and Nature's Methane?

Why Anaerobic Digestion?

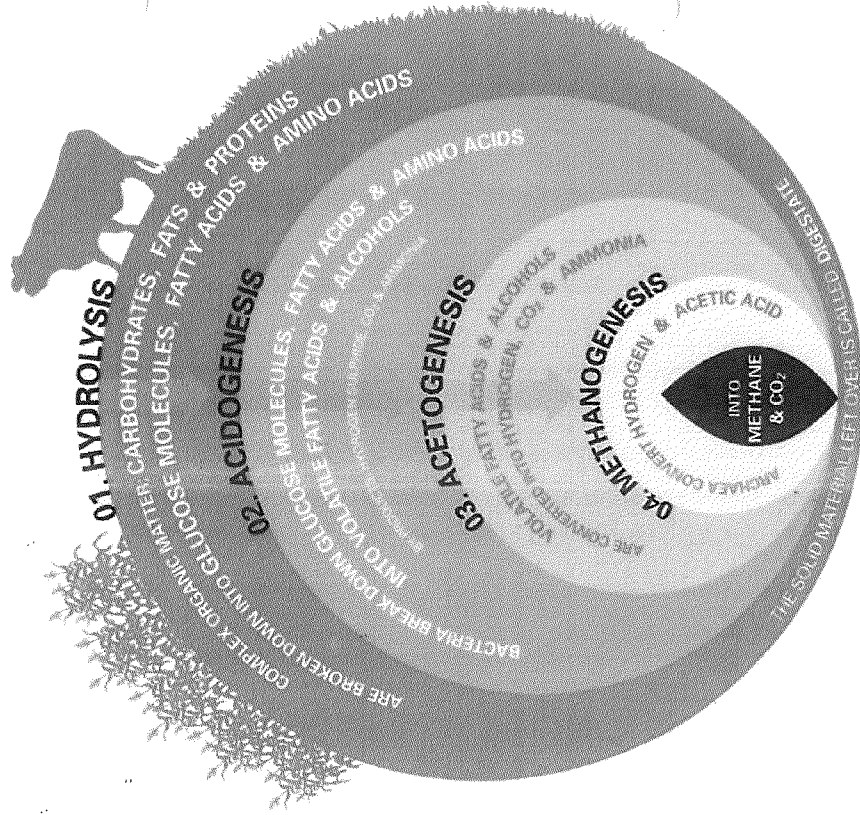
Overview of Technology and Process

Overview of Urban Digesters

Question and Answer Period



Nature's Methane HOLDINGS



Jefferson I Neighborhood Meeting

Review of Concerns



The West Louisville Community was not an active participant in the identification and development of these projects.

There is a real question of what benefit these projects bring to the local community.

The community does not want other people's garbage trucked in.

There are concerns about the increase in truck traffic.

There are concerns about the safety of these facilities, particularly the gas production.

There are concerns about the odors and emissions associated with these facilities.

There are concerns about the health risks associated with these facilities.

There were questions about the long term viability of the digester projects.

There is a perception that these projects are being located in West Louisville because they are unwanted in other neighborhoods.



145



Neighborhood Meeting Agenda

Jefferson AD II Project

Introductions

Sign-up Sheet

Participants

Jefferson I Neighborhood Meeting

Review of Concerns

Anaerobic Digester Presentation

Who is STAR Energy and Nature's Methane?

Why Anaerobic Digestion?

Overview of Technology and Process

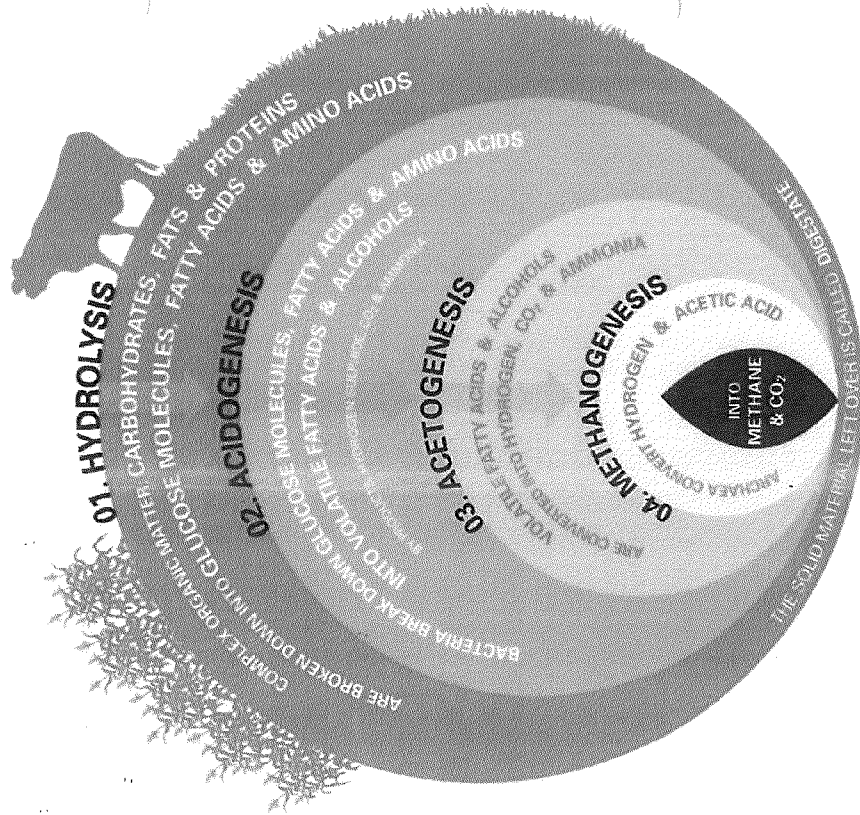
Overview of Urban Digesters

Question and Answer Period



Nature's Methane HOLDINGS

15CU1023



Neighborhood Meeting Agenda

Jefferson AD II Project



Introductions

Sign-up Sheet

Participants

Jefferson I Neighborhood Meeting

Review of Concerns

Anaerobic Digester Presentation

Who is STAR Energy and Nature's Methane?

Why Anaerobic Digestion?

Overview of Technology and Process

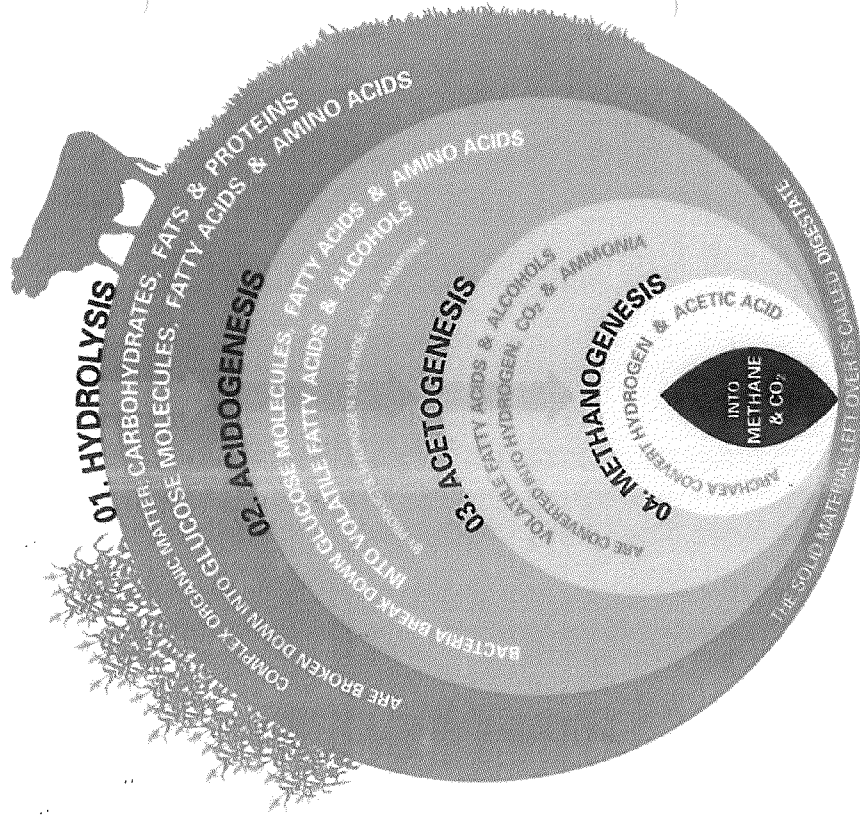
Overview of Urban Digesters

Question and Answer Period



Nature's Methane HOLDINGS

© 2015 Nature's Methane – Confidential & Proprietary





Neighborhood Meeting Agenda

Jefferson AD II Project

Introductions

Sign-up Sheet

Participants

Jefferson I Neighborhood Meeting

Review of Concerns

Anaerobic Digester Presentation

Who is STAR Energy and Nature's Methane?

Why Anaerobic Digestion?

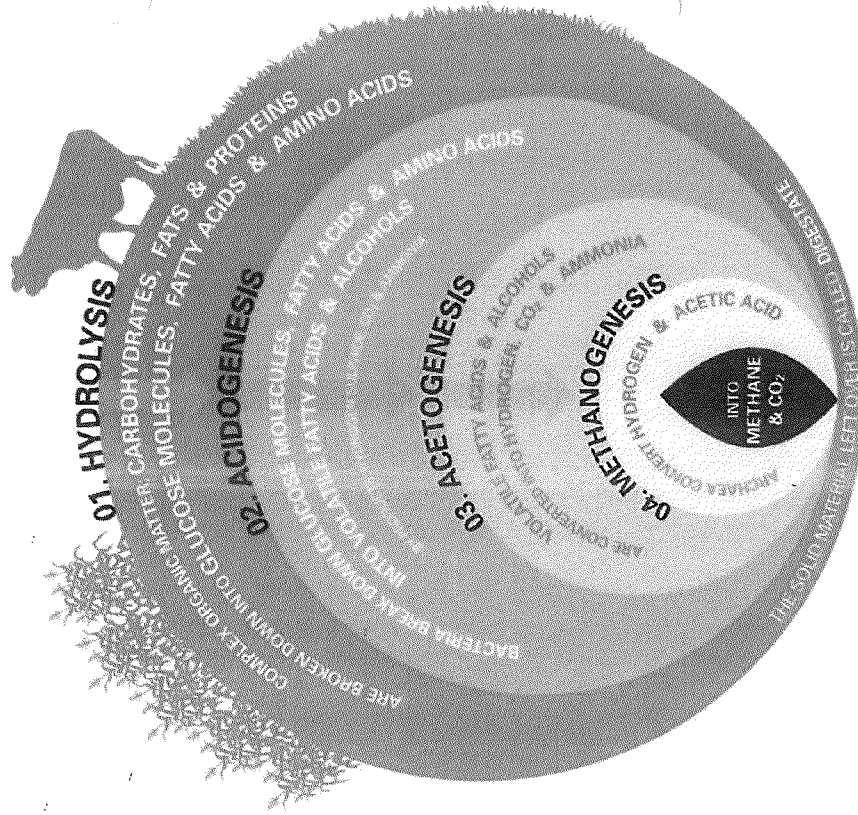
Overview of Technology and Process

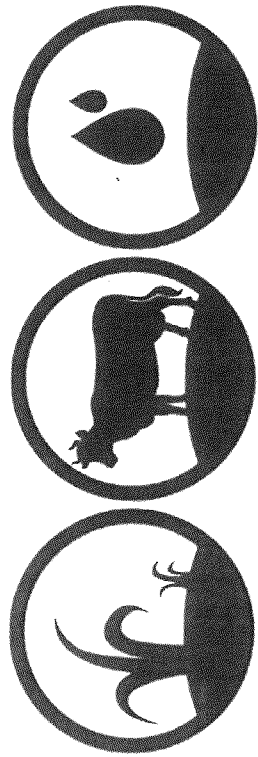
Overview of Urban Digesters

Question and Answer Period



Nature's Methane HOLDINGS





Nature's Methane

— HOLDINGS —



NM AD Project - Jefferson II
June 18, 2015