



4622 Chambliss Avenue  
Knoxville, TN 37919  
Phone 865.584.7868  
Fax 865.584.3139  
faldesco@gmail.com  
© copyright 2019

OWNER REVIEW & PRICING  
NOT FOR CONSTRUCTION  
04/01/19

ZIPS  
CAR WASH

4001 OUTER LOOP  
LOUISVILLE, KY 40219

ELEVATIONS

AS INSTRUMENTS OF SERVICE, THESE DRAWINGS AND THE DESIGN REPRESENTED BY THEM ARE THE PROPERTY OF DAMON A. FALCONNIER AND AS SUCH ARE PROTECTED BY STATE AND FEDERAL COPYRIGHT LAWS. REPRODUCTION OR USE OF THESE DRAWINGS OTHER THAN FOR THE PROJECT INTENDED WITHOUT WRITTEN CONSENT FROM DAMON A. FALCONNIER IS PROHIBITED. UNAUTHORIZED USE WILL BE SUBJECT TO LEGAL ACTION.

RECEIVED  
APR 04 2019  
PLANNING & DESIGN SERVICES

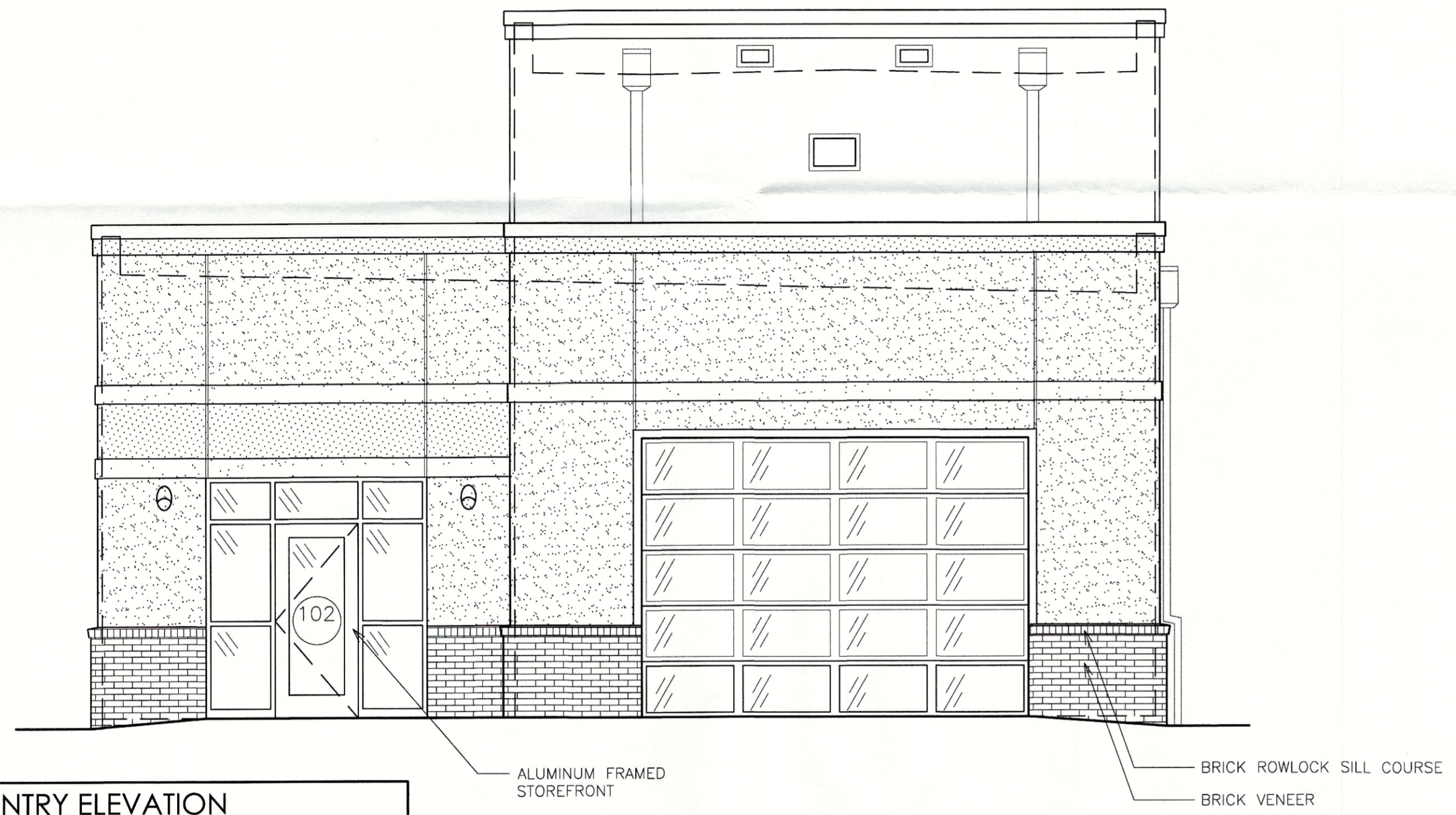
DRAWN BY:	GAC
CHECKED BY:	DAF
ISSUED:	
REVISION(S):	
FILE:	2019-028

A-201

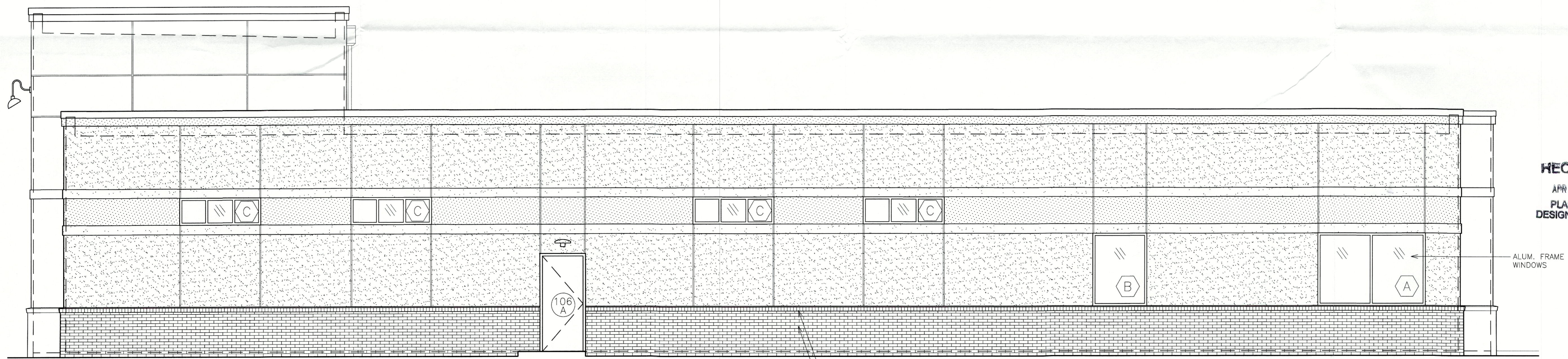
13DEVPLAN1195

**EXTERIOR FINISHES**

- DOWNSPOUTS:**  
DARK BRONZE  
\*COLOR TO MATCH HM DOORS & WINDOWS.
- OVERFLOW SCUPPERS:**  
DARK BRONZE  
\*COLOR TO MATCH HM DOORS & WINDOWS.
- METAL ROOF COPING:**  
REGAL RED  
\*COLOR TO MATCH WITH EPT-3.
- HOLLOW METAL DOORS & FRAMES:**  
"URBAN BRONZE" SW7048
- ALUMINUM WINDOWS & STOREFRONT:**  
DARK BRONZE
- BRICK VENEER:**  
BORAL BRICKS, BASTILLE MODULAR
- EXTERIOR PAINT COLORS:**  
EPT-1:  
"KILIM BEIGE" SW6106  
  
EPT-2:  
"LATTE" SW6108  
  
EPT-3:  
"RED GUMBALL" PPG1187-7  
\*COLOR TO MATCH METAL ROOF COPING  
  
EPT-4:  
"URBANE BRONZE" SW7048



**B1** ENTRY ELEVATION  
1/4" = 1'-0"



**A1** OFFICE SIDE ELEVATION  
1/4" = 1'-0"

E

D

C

B

A

1

2

3

4

5

6