



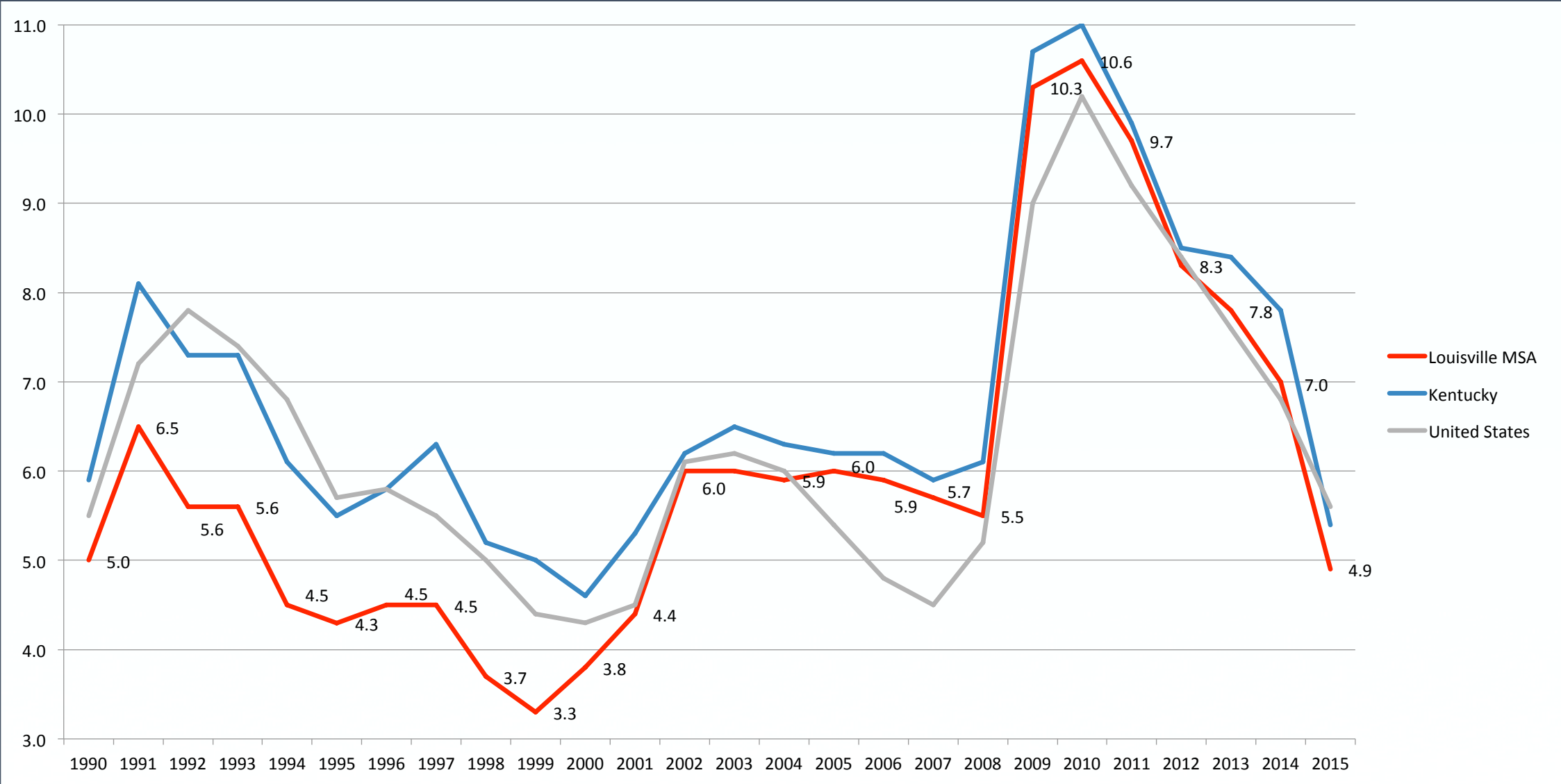
KENTUCKIANAWORKS

# LOUISVILLE AREA JOB TRENDS

MICHAEL GRITTON  
EXECUTIVE DIRECTOR  
KENTUCKIANAWORKS

# LOUISVILLE MSA vs STATE & NATIONAL UNEMPLOYMENT RATES

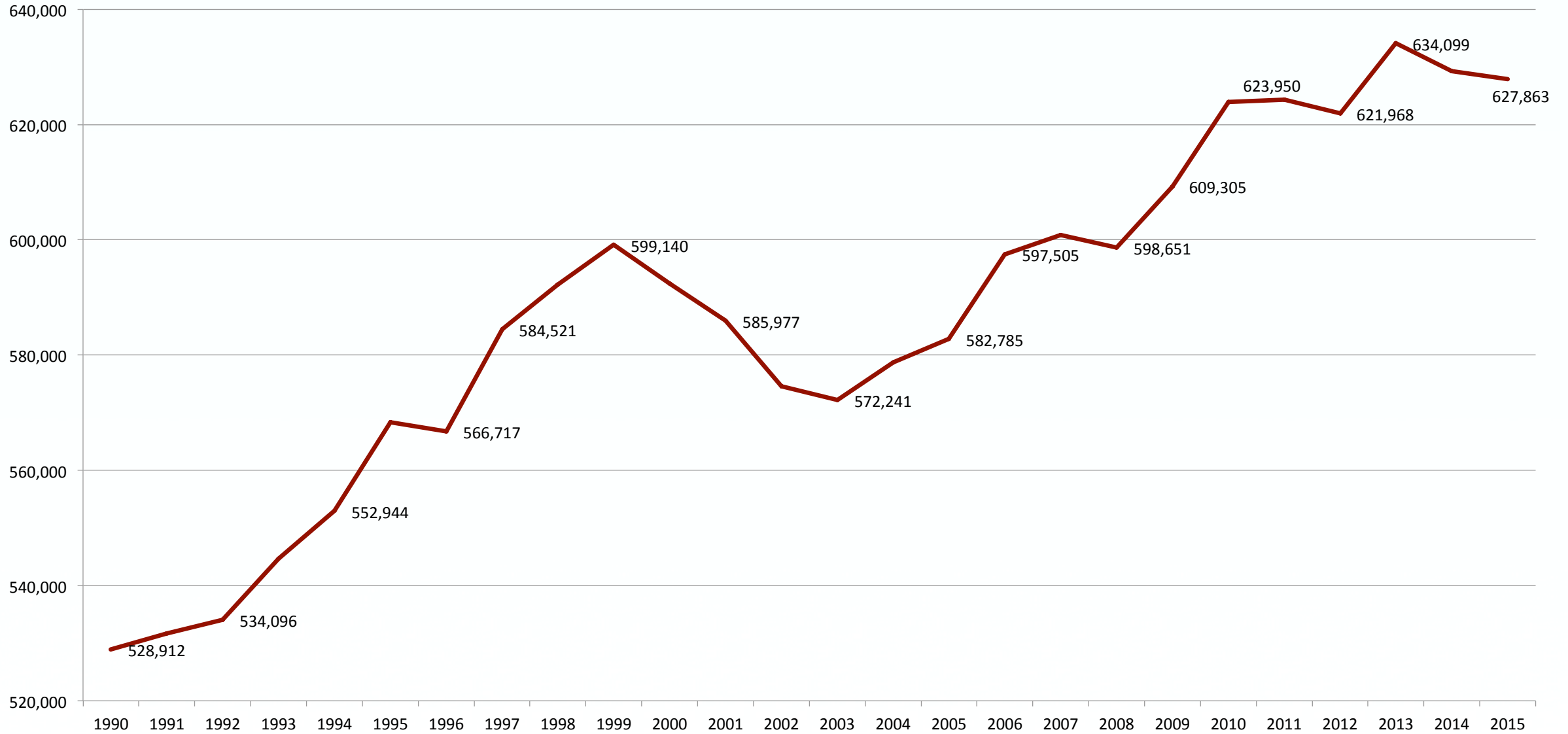
Mar. 1990 - Mar. 2015



Source: US Bureau of Labor Statistics

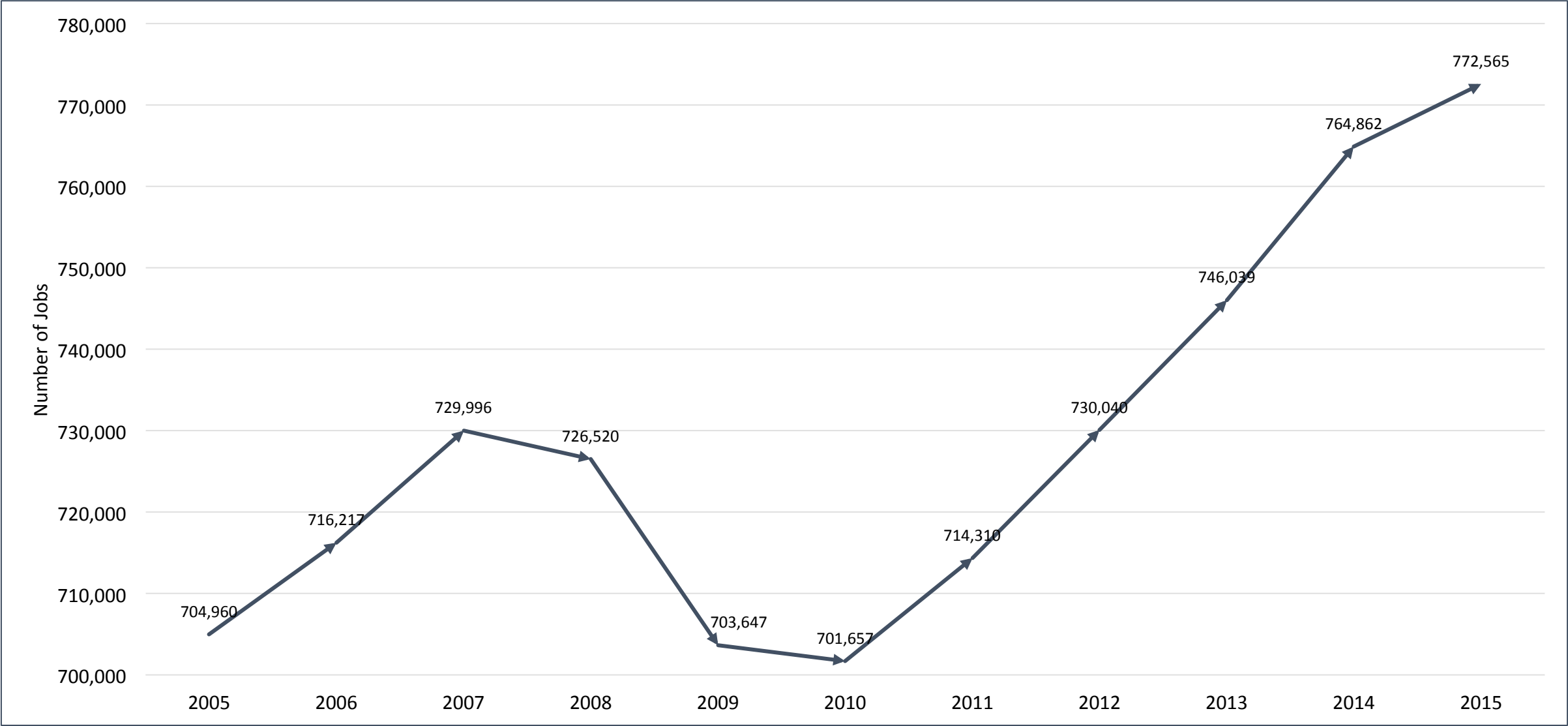
# LOUISVILLE MSA LABOR FORCE (people working or looking for work)

Mar. 1990 – Mar. 2015



# LOUISVILLE MSA TOTAL JOBS

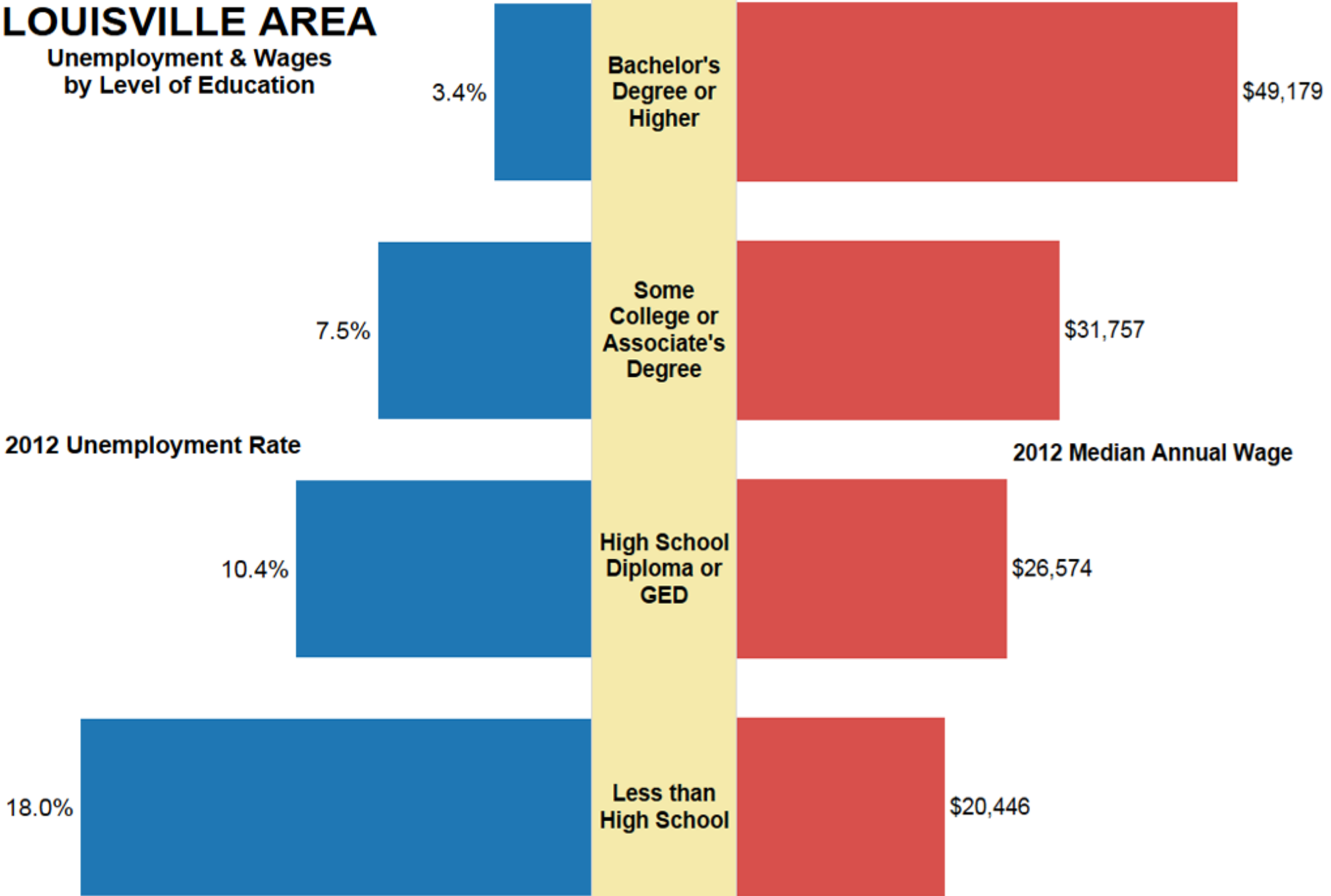
2005 - 2015



Source: EMSI Analyst

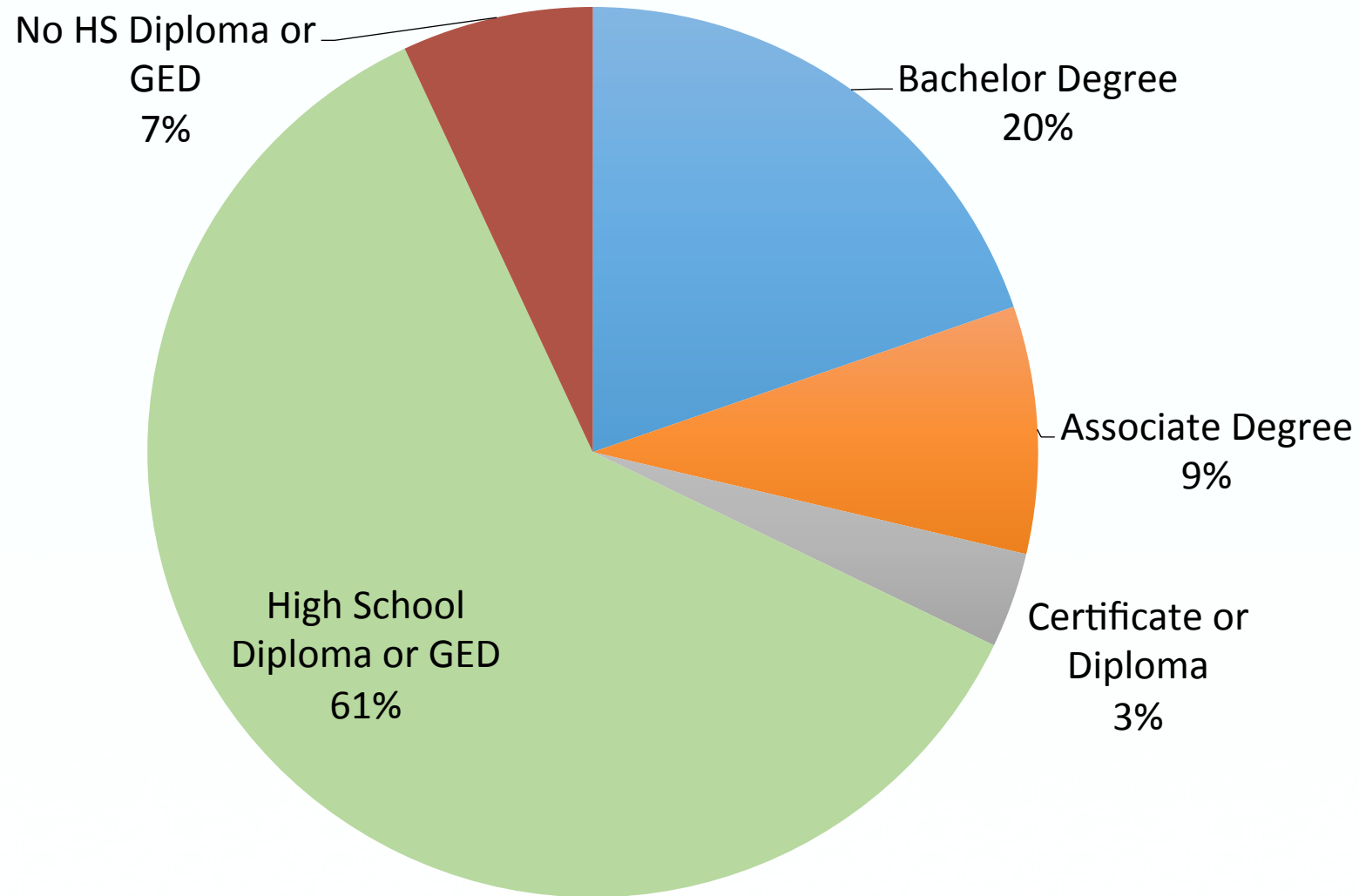
# LOUISVILLE AREA

Unemployment & Wages  
by Level of Education



# LOUISVILLE WORKFORCE INVESTMENT AREA

## EDUCATIONAL ATTAINMENT OF THE UNEMPLOYED

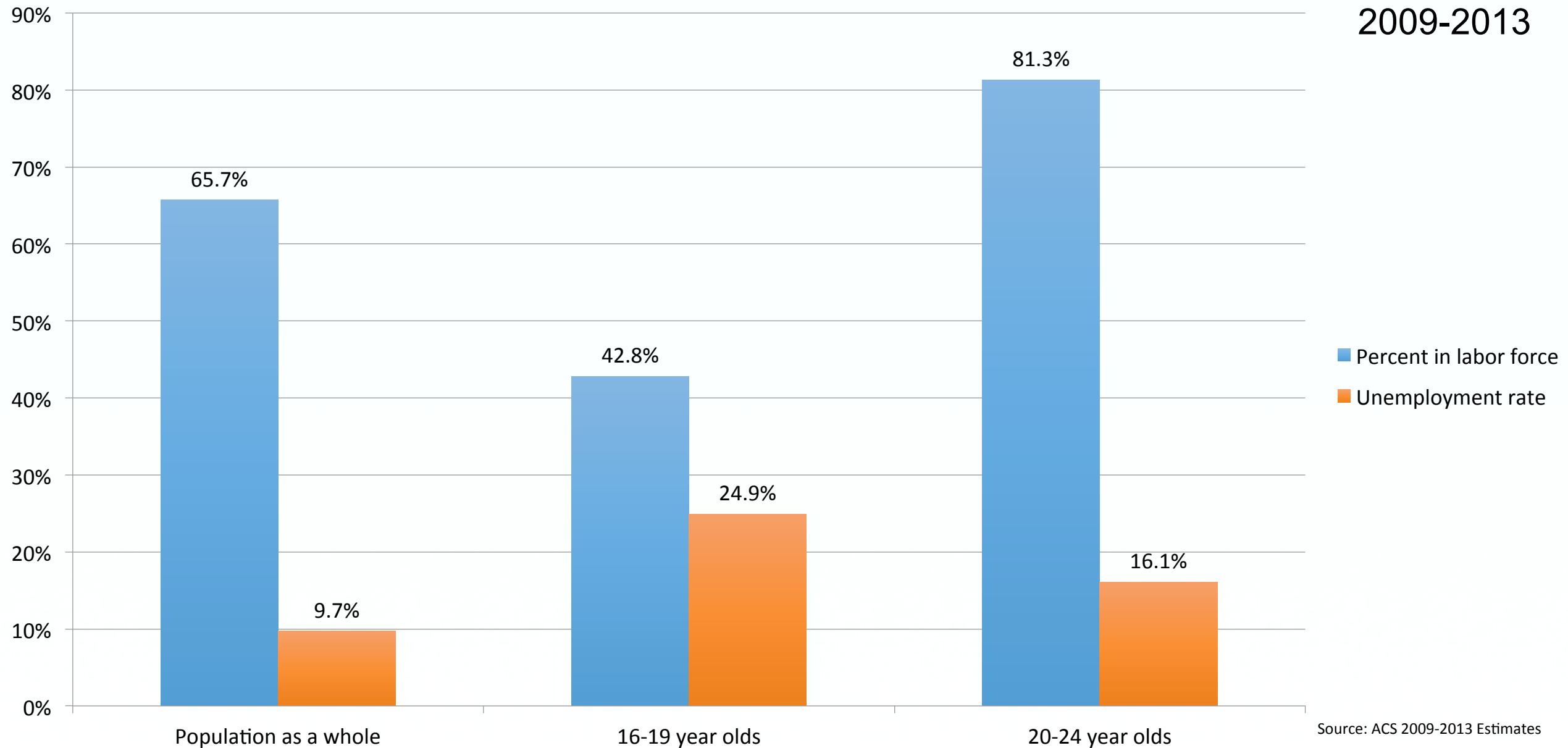


Source: KentuckianaWorks Burning Glass Focus Career, data feed for educational attainment of 7,708 people registered in the Focus Career System August 2013-October 2014  
Applies only to the Louisville Workforce Investment Area, comprising the following Kentucky Counties: Bullitt, Henry, Jefferson, Oldham, Shelby, Spencer, and Trimble

# LOUISVILLE MSA

## YOUTH LABOR FORCE PARTICIPATION & UNEMPLOYMENT

2009-2013



# Advanced Manufacturing Career Pathways

Louisville Metropolitan Statistical Area • October - December 2014

	PRODUCTION	PROCESS DEVELOPMENT	QUALITY ASSURANCE	MAINTENANCE
BA/BS (4 YRS)	Manufacturing Engineers 29 JOB POSTINGS IN THE LAST QUARTER \$30.06 to \$44.86 HOURLY RATE 226 OPEN JOBS IN THE LAST QUARTER	Estimators; Sales Engineers 28 JOB POSTINGS IN THE LAST QUARTER \$22.08 to \$36.55 HOURLY RATE	Quality Engineers; Production Managers 100 JOB POSTINGS IN THE LAST QUARTER \$28.45 to \$45.60 HOURLY RATE	Electrical and Mechanical Engineers 69 JOB POSTINGS IN THE LAST QUARTER \$32.56 to \$46.49 HOURLY RATE
ASSOCIATE DEGREE (2 YRS)	No high-growth jobs at the associate degree level in this pathway 36 OPEN JOBS IN THE LAST QUARTER	Mechanical Drafters (Computer-aided Designers) 15 JOB POSTINGS IN THE LAST QUARTER \$18.76 to \$28.52 HOURLY RATE	Engineering and Manufacturing Technicians 21 JOB POSTINGS IN THE LAST QUARTER \$24.34 to \$27.74 HOURLY RATE	No high-growth jobs at the associate degree level in this pathway
CERTIFICATE OR DIPLOMA (1-2 YRS)	Production Supervisors; CNC Machine Tool Operators 145 JOB POSTINGS IN THE LAST QUARTER \$17.58 to \$27.95 HOURLY RATE	No high-growth jobs at the certificate level in this pathway	Quality Coordinators 19 JOB POSTINGS IN THE LAST QUARTER \$13.58 to \$19.98 HOURLY RATE	Welders; Industrial Machinery Mechanics; Industrial Maintenance Technicians 64 JOB POSTINGS IN THE LAST QUARTER \$17.25 to \$24.53 HOURLY RATE
HIGH SCHOOL OR GED	Assembly Technicians; Industrial Tool Operators 191 JOB POSTINGS IN THE LAST QUARTER \$12.41 to \$22.38 HOURLY RATE	No high-growth jobs at the entry level in this pathway	Quality Assurance Specialists 28 JOB POSTINGS IN THE LAST QUARTER \$14.09 to \$23.08 HOURLY RATE	Repair technician 29 JOB POSTINGS IN THE LAST QUARTER \$12.91 to \$22.25 HOURLY RATE

Source: Burning Glass Labor/Insight job postings 10/1/14 through 12/31/14, discounted by 20 percent to account for possible duplication; EMSI Analyst typical entry level education and wages for 25th and 75th percentile. Numbers are not guarantees of job placement. Some occupations may be underrepresented in online job postings.

# Information Technology Career Pathways

Louisville Metropolitan Statistical Area • October - December 2014

	INFORMATION SUPPORT/SERVICES	PROGRAMMING & SOFTWARE DEV	NETWORK SYSTEMS	WEB & DIGITAL COMMUNICATIONS
BA/BS (4 YRS)	Information Technology Managers; Systems Analysts; Operations Analysts 247 JOB POSTINGS IN THE LAST QUARTER \$28.70 to \$47.93 HOURLY RATE 832 OPEN JOBS IN THE LAST QUARTER	Software Engineers; Systems Engineers 244 JOB POSTINGS IN THE LAST QUARTER \$27.37 to \$42.70 HOURLY RATE	Network Specialists; Database Administrators; Information Security Analysts; Systems Administrators 229 JOB POSTINGS IN THE LAST QUARTER \$24.77 to \$42.26 HOURLY RATE	Computer Programmers; Graphic Designers 112 JOB POSTINGS IN THE LAST QUARTER \$17.20 to \$26.42 HOURLY RATE
ASSOCIATE DEGREE (2 YRS) OR SOME COLLEGE NO DEGREE	Technical Support Analysts; Information Technology Support Technicians 225 JOB POSTINGS IN THE LAST QUARTER \$14.25 to \$21.66 HOURLY RATE 274 OPEN JOBS IN THE LAST QUARTER	No high-growth jobs at the associate degree level in this pathway	Computer Network Support Specialists 12 JOB POSTINGS IN THE LAST QUARTER \$17.01 to \$30.17 HOURLY RATE	Web Designers 37 JOB POSTINGS IN THE LAST QUARTER \$14.23 to \$21.66 HOURLY RATE
CERTIFICATE OR DIPLOMA (1-2 YRS)	No high-growth jobs at the certificate level in this pathway	No high-growth jobs at the certificate level in this pathway	No high-growth jobs at the certificate level in this pathway	No high-growth jobs at the certificate level in this pathway
HIGH SCHOOL OR GED	No high-growth jobs at the entry level in this pathway	No high-growth jobs at the entry level in this pathway	No high-growth jobs at the entry level in this pathway	No high-growth jobs at the entry level in this pathway

SOURCE: Job postings data come from Burning Glass Labor/Insight job postings 10/1/14 through 12/31/14, discounted by 20% to account for possible duplication. All other data from EMSI Analyst for 2013-2014. Numbers are not guarantees of job placement. Some occupations may be underrepresented in online job postings.



# Food and Beverage Career Pathways

Louisville Metropolitan Statistical Area • October - December 2014

	FOOD PRODUCTION	RESTAURANT	HOSPITALITY	CORPORATE HEADQUARTERS
<b>BA/BS</b> (4 YRS)	No high-growth jobs at the bachelor level in this pathway	General Managers 23 JOB POSTINGS IN THE LAST QUARTER \$26.22 to \$55.92 HOURLY RATE	Sales Managers; Marketing Coordinators 21 JOB POSTINGS IN THE LAST QUARTER \$25.49 to \$42.02 HOURLY RATE	Human Resources Specialists; Financial Analysts; Quality Assurance Analysts; Application Developers; Marketing Managers; Accountants; Network Engineers 35 JOB POSTINGS IN THE LAST QUARTER \$23.03 to \$37.34 HOURLY RATE
<b>ASSOCIATE DEGREE</b> (2 YRS)	No high-growth jobs at the associate degree level in this pathway	No high-growth jobs at the associate degree level in this pathway	No high-growth jobs at the associate degree level in this pathway	No high-growth jobs at the associate degree level in this pathway
<b>CERTIFICATE OR DIPLOMA</b> (1-2 YRS)	Shift Coordinators; Tractor-Trailer Truck Drivers 34 JOB POSTINGS IN THE LAST QUARTER \$16.96 to \$26.48 HOURLY RATE	No high-growth jobs at the certificate level in this pathway	No high-growth jobs at the certificate level in this pathway	No high-growth jobs at the certificate level in this pathway
<b>HIGH SCHOOL OR GED</b>	Maintenance Technicians; Delivery Drivers; Production Associates 24 JOB POSTINGS IN THE LAST QUARTER \$12.09 to \$21.39 HOURLY RATE	Shift Managers; Assistant Managers; Chefs 216 JOB POSTINGS IN THE LAST QUARTER \$12.11 to \$18.12 HOURLY RATE	Front Desk Agents; Housekeeping Supervisors; Security Officers 52 JOB POSTINGS IN THE LAST QUARTER \$10.25 to \$17.27 HOURLY RATE	Accounting Clerks; Front Office Supervisors; Customer Service Representatives; Telephone Operators 23 JOB POSTINGS IN THE LAST QUARTER \$14.42 to \$21.76 HOURLY RATE
<b>LESS THAN HIGH SCHOOL</b>	Order Fillers; Bakers 19 JOB POSTINGS IN THE LAST QUARTER \$9.42 to \$14.11 HOURLY RATE	Restaurant Team Members; Servers; Grill, Line and Prep Cooks; Cashiers; Bartenders; Hosts and Hostesses 324 JOB POSTINGS IN THE LAST QUARTER \$8.20 to \$9.76 HOURLY RATE	Housekeepers; Janitors; Valet Attendants 24 JOB POSTINGS IN THE LAST QUARTER \$8.86 to \$11.97 HOURLY RATE	No high-growth jobs at the less-than-high-school level in this pathway

SOURCE: Job postings data come from Burning Glass Labor/Insight job postings 10/1/14 through 12/31/14, discounted by 20 percent to account for possible duplication. All other data from EMSI Analyst for 2013-2014. Numbers are not guarantees of job placement. Some occupations may be underrepresented in online job postings.

# Health Enterprises and Lifelong Wellness & Aging Career Pathways

Louisville Metropolitan Statistical Area • October - December 2014

	DIRECT PATIENT CARE	DIAGNOSTIC/THERAPEUTIC	ADMINISTRATIVE/CORPORATE
<b>DOCTORAL OR PROFESSIONAL DEGREE</b>	Physician and Surgeons; Physical Therapists; Audiologists; Family and General Practitioners 146 JOB POSTINGS IN THE LAST QUARTER \$55.40 to \$72.74 HOURLY RATE	Dentists; Orthodontists; Pharmacists; Optometrists 49 JOB POSTINGS IN THE LAST QUARTER \$55.71 to \$72.82 HOURLY RATE	No high-growth jobs at the professional level in this pathway
<b>MASTER'S DEGREE</b>	Nurse Practitioners; Occupational Therapists; Physician Assistants; Nurse Anesthetists; Speech-Language Pathologists 200 JOB POSTINGS IN THE LAST QUARTER \$36.11 to \$48.74 HOURLY RATE	Mental Health Counselors 12 JOB POSTINGS IN THE LAST QUARTER \$13.75 to \$18.91 HOURLY RATE	Healthcare Social Workers, Statisticians 31 JOB POSTINGS IN THE LAST QUARTER \$20.00 to \$28.96 HOURLY RATE
<b>BA/BS</b> (4 YRS)	Directors of Nursing 369 JOB POSTINGS IN THE LAST QUARTER \$32.74 to \$53.03 HOURLY RATE	Medical and Clinical Laboratory Technicians; Dietitians and Nutritionists 26 JOB POSTINGS IN THE LAST QUARTER \$24.30 to \$32.33 HOURLY RATE	Systems Analysts; Accounting Analysts; Business Office Managers; Human Resources Specialists; Human Resources Managers; Marketing Managers; Marketing Coordinators; Information Technology Managers; Network Engineers; Risk Analysts; Financial Analysts 155 JOB POSTINGS IN THE LAST QUARTER \$23.27 to \$37.96 HOURLY RATE
<b>ASSOCIATE DEGREE</b> (2 YRS)	Registered Nurses; Physical and Occupational Therapist Assistants; Respiratory Therapists; Sonographers; Cardiovascular Technicians 970 JOB POSTINGS IN THE LAST QUARTER \$24.08 to \$33.66 HOURLY RATE	Medical and Clinical Laboratory Technicians; Dental Hygienists; Radiologic Technologists 76 JOB POSTINGS IN THE LAST QUARTER \$20.83 to \$28.98 HOURLY RATE	No high-growth jobs at the associate degree level in this pathway
<b>CERTIFICATE</b> (1-2 YRS)	Nursing Assistants; Emergency Technicians and Paramedics; Medical Assistants; Licensed Nurses 582 JOB POSTINGS IN THE LAST QUARTER \$12.05 to \$16.14 HOURLY RATE	Dental Assistants; Surgical Technologists; Phlebotomists; Ophthalmic Medical Technicians 74 JOB POSTINGS IN THE LAST QUARTER \$14.30 to \$19.23 HOURLY RATE	Medical Transcriptionists; Medical Records Clerks 132 JOB POSTINGS IN THE LAST QUARTER \$12.22 to \$17.96 HOURLY RATE
<b>HIGH SCHOOL OR GED</b>	Physical Therapist Aides; Patient Transporters; Sterile Processing Technicians; Endoscopy Technicians; Emergency Room Technicians 154 JOB POSTINGS IN THE LAST QUARTER \$14.27 to \$21.37 HOURLY RATE	Pharmacy Clerks; Pharmacy Technicians; Opticians; Social Workers; Home Health Aides; Dietary Cooks; Caregivers 198 JOB POSTINGS IN THE LAST QUARTER \$9.60 to \$12.80 HOURLY RATE	Medical Receptionists; Bookkeepers; Telephone Operators; Office Managers; Customer Service Representatives; Executive Assistants 264 JOB POSTINGS IN THE LAST QUARTER \$14.26 to \$21.39 HOURLY RATE

SOURCE: Job postings data come from Burning Glass Labor/Insight job postings 10/1/14 through 12/31/14, discounted by 20 percent to account for possible duplication. All other data from EMSI Analyst for 2013-2014. Numbers are not guarantees of job placement. Some occupations may be underrepresented in online job postings.



# Consumer and Business Services Career Pathways

Louisville Metropolitan Statistical Area • October - December 2014

	FINANCIAL SERVICES/ PAYMENT PROCESSING	LEGAL SERVICES/ CONSULTING	ADVERTISING AND PR
PROFESSIONAL DEGREE/PHD/ MASTER'S DEGREE	No high-growth jobs at the professional level in this pathway	Judges; Lawyers 37 JOB POSTINGS IN THE LAST QUARTER \$35.40 to \$54.18 HOURLY RATE	No high-growth jobs at the professional level in this pathway
BA/BS (4 YRS)	Financial Managers; Accountants; Budget Analysts; Credit Analysts; Personal Financial Advisors; Business Bankers 465 JOB POSTINGS IN THE LAST QUARTER \$22.33 to \$35.56 HOURLY RATE	Management Consultant 122 JOB POSTINGS IN THE LAST QUARTER \$25.46 to \$36.69 HOURLY RATE	Marketing Managers; Public Relations Managers; Fundraising Coordinators; Marketing Coordinators; Videographers; Editors; Video Editors; Graphic Designers; Animators; Communications Specialists; Technical Writers; Copywriters 248 JOB POSTINGS IN THE LAST QUARTER \$18.05 to \$27.98 HOURLY RATE
ASSOCIATE DEGREE (2 YRS)	No high-growth jobs at the associate degree level in this pathway	Paralegals and Legal Assistants 13 JOB POSTINGS IN THE LAST QUARTER \$16.56 to \$24.53 HOURLY RATE	Executive Assistants 54 JOB POSTINGS IN THE LAST QUARTER \$16.89 to \$23.67 HOURLY RATE
CERTIFICATE (1-2 YRS)	No high-growth jobs at the certificate level in this pathway	No high-growth jobs at the certificate level in this pathway	No high-growth jobs at the certificate level in this pathway
HIGH SCHOOL OR GED	Collections Specialists; Billing Specialists; Bookkeepers; Correspondence Clerks; Credit Assistants 318 JOB POSTINGS IN THE LAST QUARTER \$13.34 to \$18.92 HOURLY RATE	Legal Administrative Assistants; Receptionists 89 JOB POSTINGS IN THE LAST QUARTER \$11.10 to \$15.45 HOURLY RATE	Office Assistants; Artists; Media and Communication Assistants; Photographers; Secretaries and Administrative Assistants 370 JOB POSTINGS IN THE LAST QUARTER \$11.47 to \$17.20 HOURLY RATE

SOURCE: Burning Glass Labor/Insight job postings 10/1/14 through 12/31/14, discounted by 20 percent to account for possible duplication; EMSI Analyst typical entry-level education and wages for 25th and 75th percentile. Numbers are not guarantees of job placement. Some occupations may be underrepresented in online job postings.

# Logistics and Supply Chain Management Career Pathways

Louisville Metropolitan Statistical Area • October - December 2014

	PROCUREMENT (SOURCING/BUYING)	TRANSPORTATION OPERATIONS	WAREHOUSING & DISTRIBUTION
BA/BS (4 YRS)	Purchasing Managers; Logistics Specialists 59 JOB POSTINGS IN THE LAST QUARTER \$30.25 to \$54.64 HOURLY RATE	Sales Managers; Industrial and Aerospace Engineers; Airline Pilots, Copilots, and Flight Engineers 190 JOB POSTINGS IN THE LAST QUARTER \$33.65 to \$54.06 HOURLY RATE	Sales Representatives; Mechanical Engineers 381 JOB POSTINGS IN THE LAST QUARTER \$29.49 to \$51.57 HOURLY RATE
ASSOCIATE DEGREE (2 YRS)	No high-growth jobs at the associate degree level in this pathway	No high-growth jobs at the associate degree level in this pathway	No high-growth jobs at the associate degree level in this pathway
CERTIFICATE OR DIPLOMA (1-2 YRS)	No high-growth jobs at the certificate level in this pathway	Tractor Trailer Truck Drivers; Aircraft Mechanics and Service Technicians 796 JOB POSTINGS IN THE LAST QUARTER \$17.23 to \$27.50 HOURLY RATE	Production Supervisors 96 JOB POSTINGS IN THE LAST QUARTER \$19.48 to \$31.69 HOURLY RATE
HIGH SCHOOL OR GED	No high-growth jobs at the entry level in this pathway	Delivery Drivers; Import and Export Coordinators; Transportation Managers 115 JOB POSTINGS IN THE LAST QUARTER \$14.89 to \$25.57 HOURLY RATE	Warehouse Workers; Inventory Clerks; Warehouse Managers; Forklift Operators 575 JOB POSTINGS IN THE LAST QUARTER \$10.31 to \$15.65 HOURLY RATE

SOURCE: Job postings data come from Burning Glass Labor/Insight job postings 10/1/14 through 12/31/14, discounted by 20 percent to account for possible duplication. All other data from EMSI Analyst for 2013-2014. Numbers are not guarantees of job placement. Some occupations may be underrepresented in online job postings.