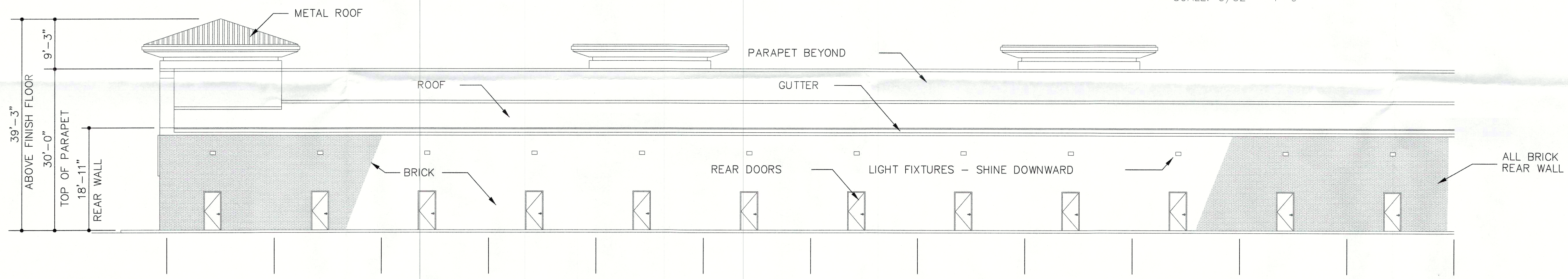
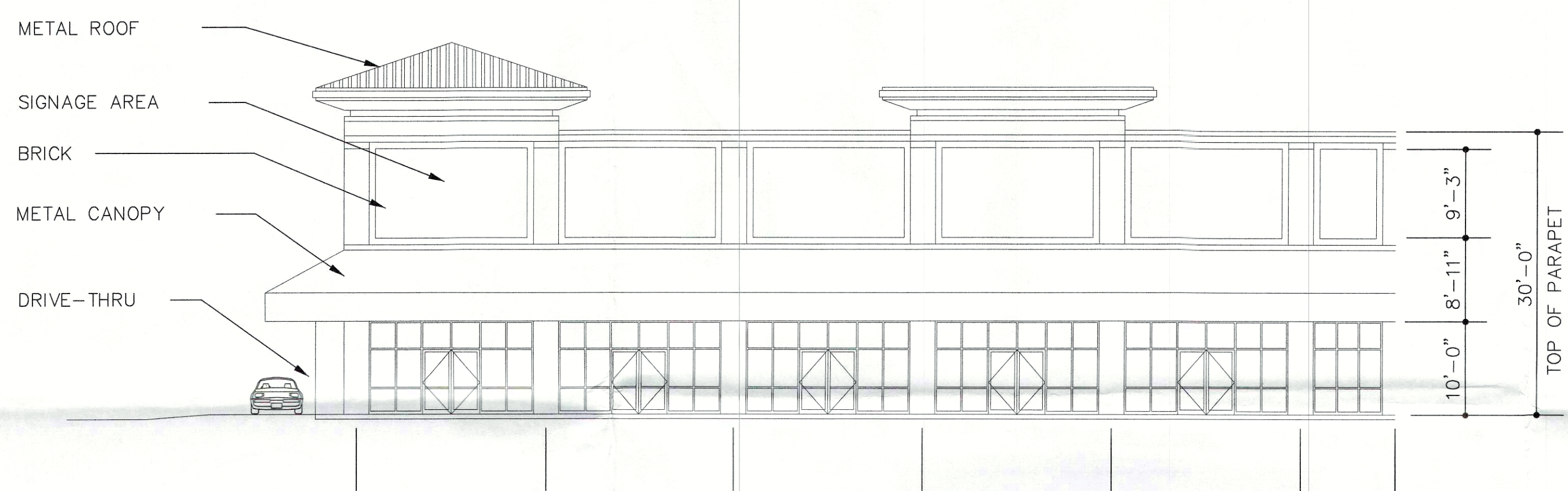


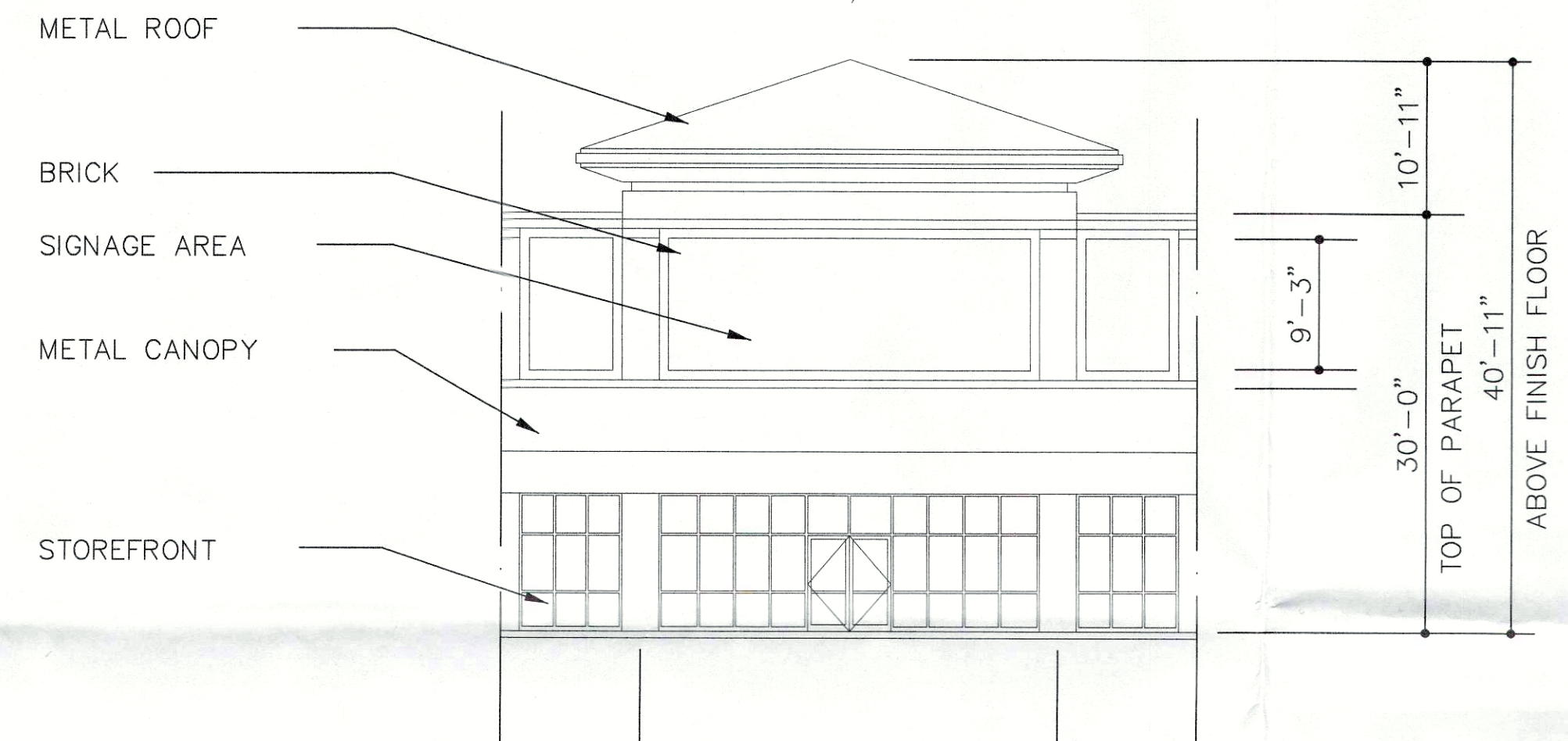
MAIN - EAST - ELEVATION
SCALE: 3/32" = 1'-0"



REAR - WEST - ELEVATION - FACING MINI-STORAGE
SCALE: 3/32" = 1'-0"

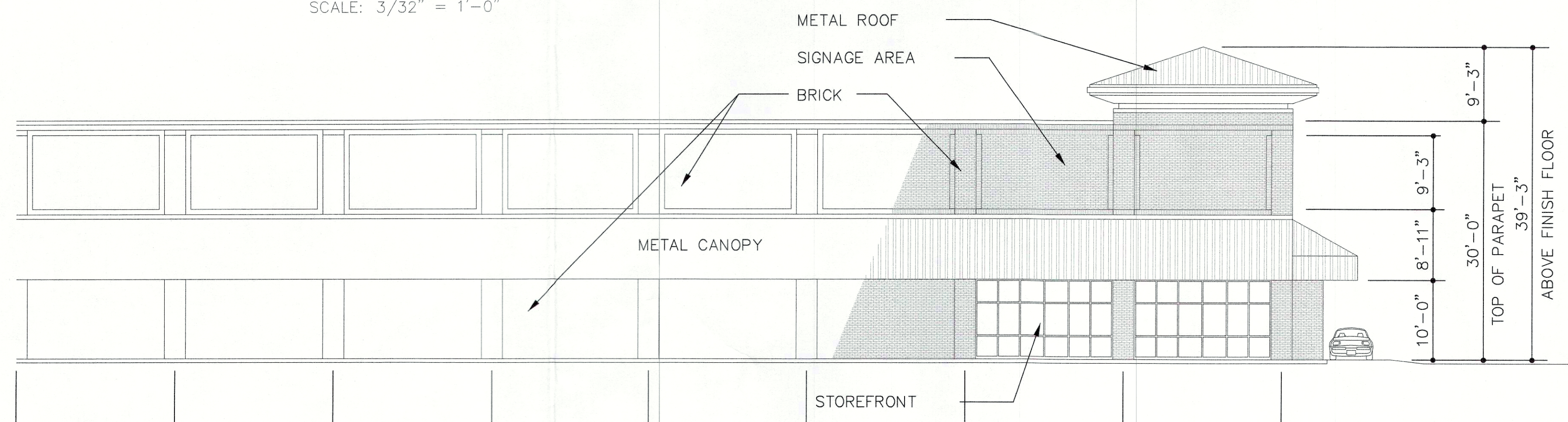


MAIN - NORTH - ELEVATION
SCALE: 3/32" = 1'-0"

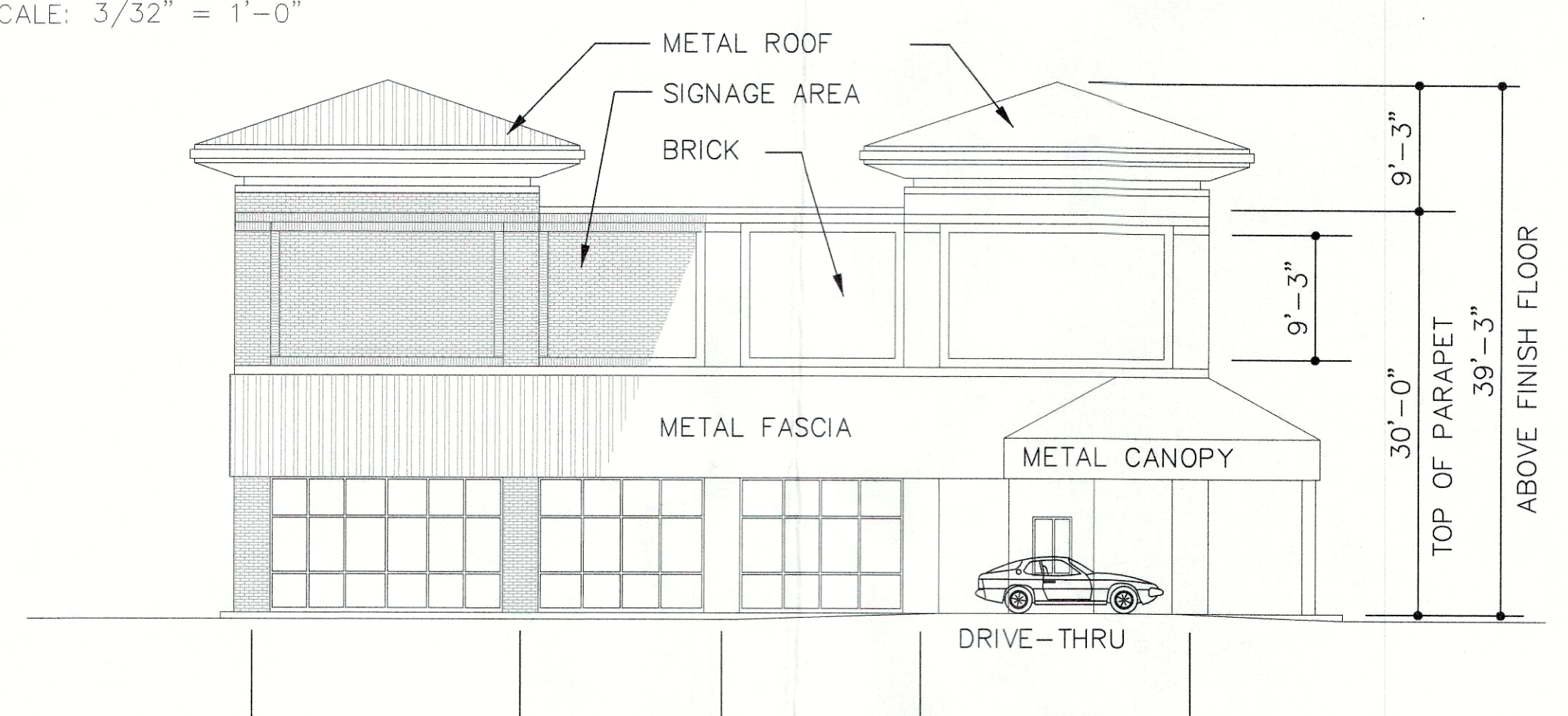


MAIN CORNER - NORTHEAST - ELEVATION
SCALE: 3/32" = 1'-0"

RECEIVED
MAR 12 2018
PLANNING &
DESIGN SERVICES



FREEWAY - SOUTH - ELEVATION
SCALE: 3/32" = 1'-0"



DRIVE-THRU END - EAST - ELEVATION
SCALE: 3/32" = 1'-0"



studio kremer architects

1231 South Shelby Street, Louisville, KY 40203
TEL 502.499.1100 FAX 499.1101

WILL REALTY

5815 ROUND HILL ROAD
LOUISVILLE, KENTUCKY 40222

PROPOSED ELEVATIONS

NEW RETAIL DEVELOPMENT
8806 & 8912 SMYRNA PARKWAY
LOUISVILLE, KENTUCKY 40299

DATE: 12/21/2017
DRAWN BY: sk
CHECKED BY:
REVISIONS:
1 2/28/2018

2017-070

PR1