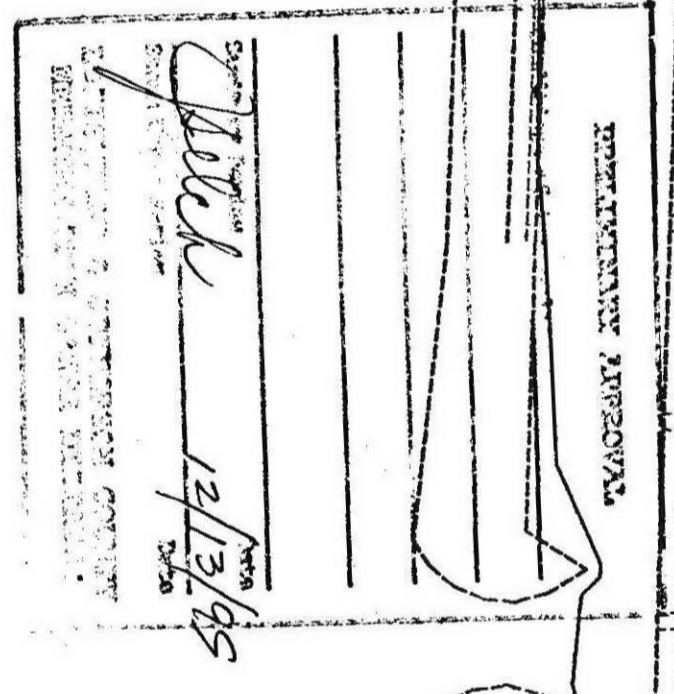
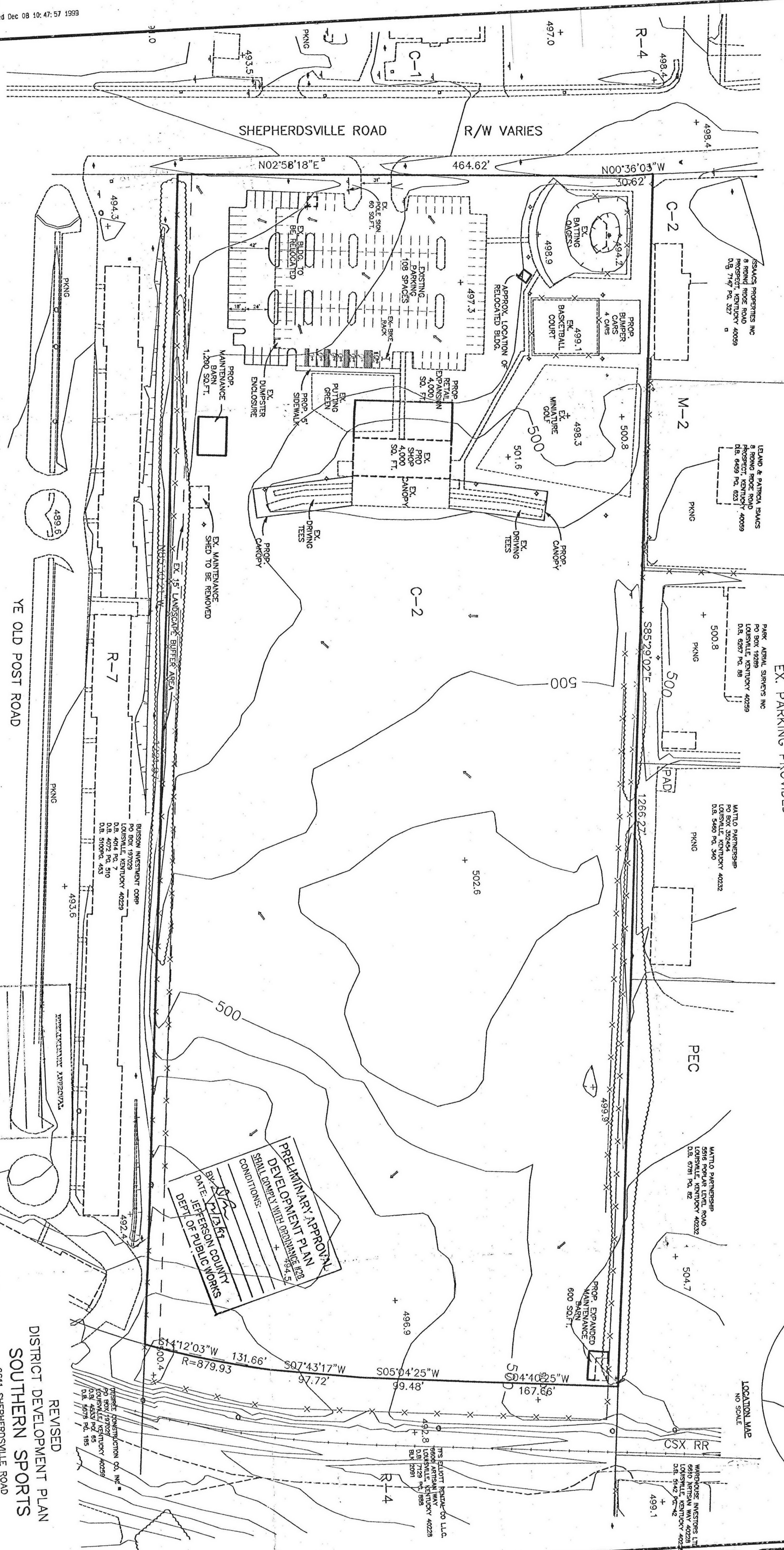


- GENERAL NOTES:**
1. DRAINAGE PATTERNS DEPICTED BY ARROWS (A-1) IS FOR CONCEPT PURPOSES ONLY. DRAINAGE PATTERNS SHALL BE DETERMINED DURING THE CONCEPT PLAN DESIGN PROCESS. DRAINAGE FACILITIES SHALL COMPLY TO MSD REQUIREMENTS.
  2. SUBJECT TO KENTUCKY DEPARTMENT OF TRANSPORTATION REVIEW.



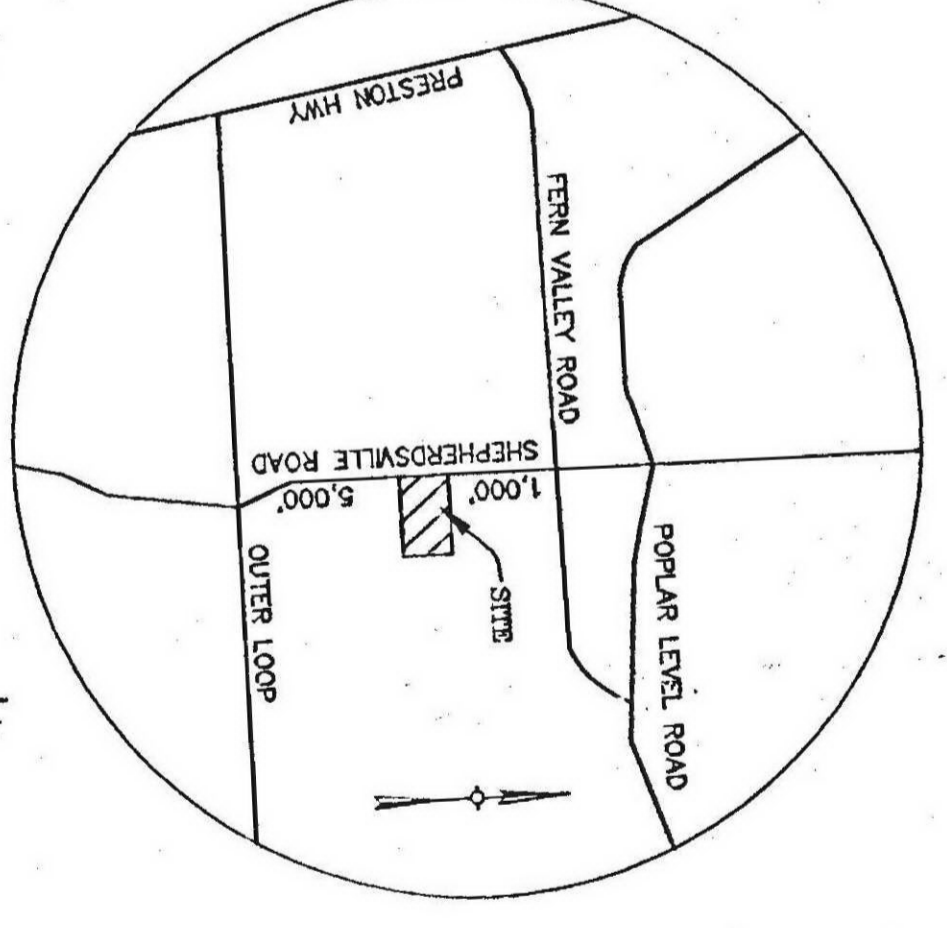
RECEIVED  
 DISTRICT DEVELOPMENT SERVICES  
 DISTRICT DEVELOPMENT PLAN  
 SOUTHERN SPORTS  
 9811 SHEPHERDSVILLE ROAD  
 SHEPHERDSVILLE, KY 40373  
 DEC 13 1999  
 MSO WW# 2707



**DATA**

TOTAL AREA	14.22 ACRES
EX. ZONING	C-2
EX. USE	DRIVING RANGE
EX. BUILDING AREA	4,000 SQ.FT.
EX. PARKING REQUIRED	20 SPACES
EX. RETAIL	48 SPACES
EX. DRIVING RANGE	48 SPACES
EX. HOURLY GOLF	36 SPACES
EX. BUMPER CARS	4 SPACES
EX. PLACE BASKETBALL	18 SPACES
EX. PLACE BASKETBALL	18 SPACES
TOTAL EX. SPACES REQUIRED	104 SPACES
EX. PARKING PROVIDED	108 SPACES

PROPOSED BUILDING AREA	8,000 SQ.FT.
PROPOSED PARKING REQUIRED	40 SPACES
TOTAL RETAIL	48 SPACES
EX. DRIVING RANGE	36 SPACES
EX. HOURLY GOLF	36 SPACES
EX. BUMPER CARS	4 SPACES
EX. PLACE BASKETBALL	18 SPACES
EX. PLACE BASKETBALL	18 SPACES
TOTAL PROP. SPACES REQUIRED	124 SPACES
PROPOSED PARKING PROVIDED	134 SPACES
INC. 6 HANDICAP SPACES	



**PRELIMINARY APPROXIMATE DEVELOPMENT PLAN**  
 SUBJECT TO COUNTY ENGINEERING REVIEW  
 BY THE COUNTY ENGINEER  
 DEPT. OF PUBLIC WORKS

**REVISED DISTRICT DEVELOPMENT PLAN**  
 OWNER & DEVELOPER  
 COUNTRY CLUB RECREATION, INC.  
 2008 NEW MARKET DRIVE  
 LOUISVILLE, KENTUCKY 40222  
 DEC. 9-91-87C

**BIRCH, TRAUTWEN & MIMS, INCORPORATED**  
 Consulting Engineers Landscape Architects Planners  
 4124 Taylorville Road  
 Louisville, Kentucky 40220  
 (502)-459-8402 Phone  
 (502)-459-8427 Fax

REVISIONS		
NO.	DATE	DESCRIPTION
1	12/8/99	REVISIONS PER AGENCY COMMENTS

DATE	12/1/99
SCALE	1" = 50'
SHEET	1 OF 1

9-8-87C