



SIGN PLAN

Louisville, KY

2962 Breckenridge Lane

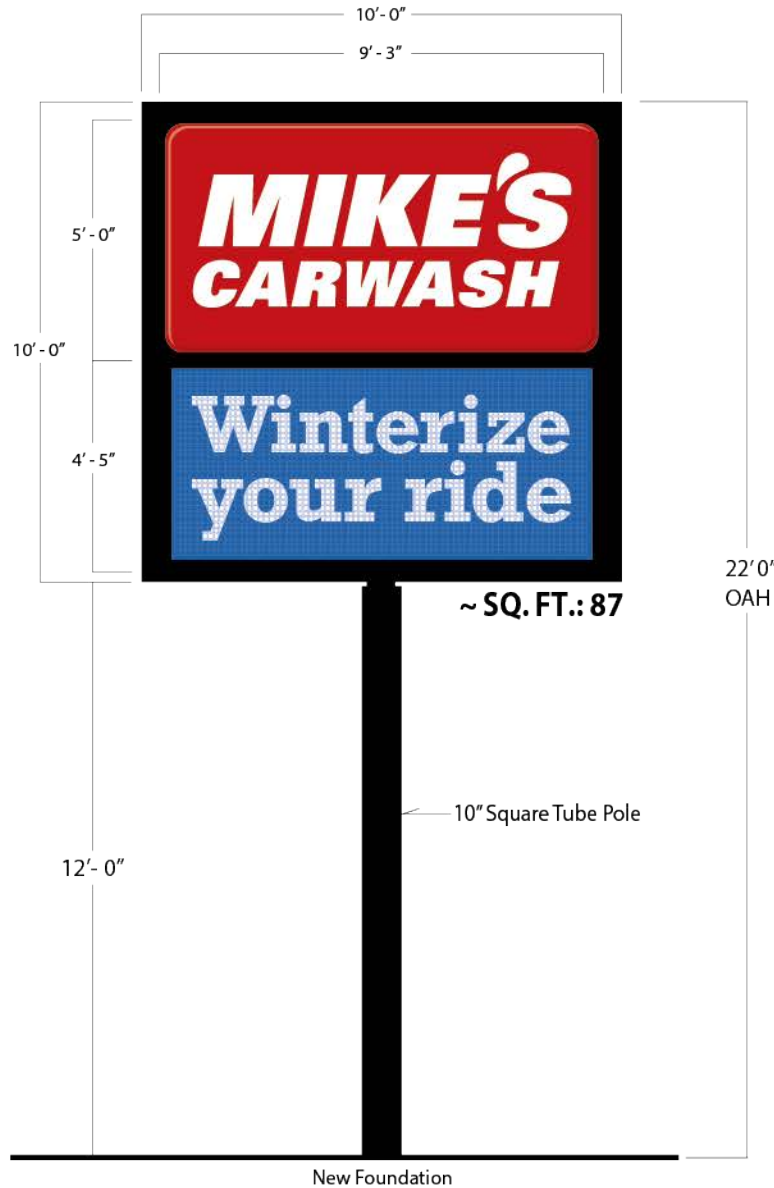
(NEW CONSTRUCTION)



5-2015 Logo

A Pylon 1 - 22' OAH

2962 Breckenridge Lane
Louisville, KY



LOGO-EMC Pylon Sign 10'-0" x 10'-0" Box Frame Cabinet

5'-0" x 9'-3" Logo Sign - SQ. FT.: 46
Mikes Car Wash is White (Embossed) on a
PMS 186 Red Pan Formed Polycarbonate bkg.
(Opaqued bkg. for this location) - Radius Corners
Black Retainer

4'-5" x 9'-3" EMC Sign - 16MM Full Color - SQ. FT.: 41
Black Retainer & Filler where needed

Black Pole



Sketch No. 20-1-72-F-MIKES-A4

Scale: 1/4" = 1'-0"

Date: 8-19-2021



DUALITE SALES & SERVICES, INC. One Dualite Lane Williamsburg, Ohio 45176

Approval:



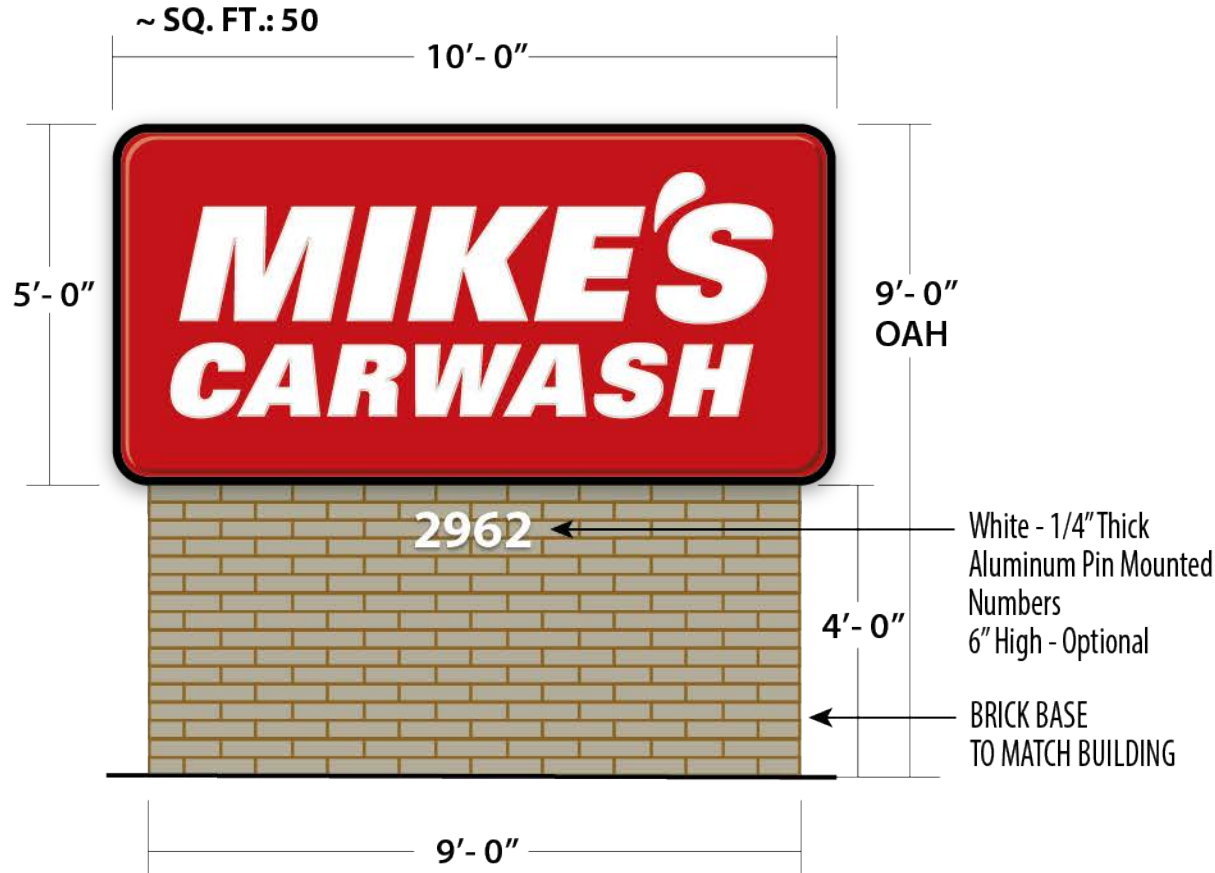
5-2015 Logo

SIGN B

5'-0" x 10'-0" MONUMENT SIGN @ 9'-0" OAH

Pg-2

**2962 Breckenridge Lane
Louisville, KY**



5'-0" x 10'-0" Logo Sign

Mikes Car Wash is White (Embossed) on a PMS 186 Red Pan Formed Polycarbonate bkg. (Opaqued bkg. for this location) - Radius Corners Black Retainer



Sketch No. 20-1-72-F-MIKES-B7

Scale: 3/8" = 1'-0"

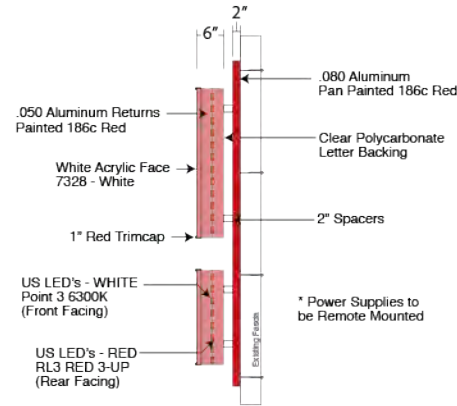
Date: 10-14-2021

Approval:

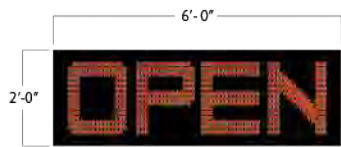
Dualite

DUALITE SALES & SERVICES, INC. One Dualite Lane Williamsburg, Ohio 45176

**2962 Breckenridge Lane
Louisville, KY**



12 SQ. FT. INTERIOR Window Sign

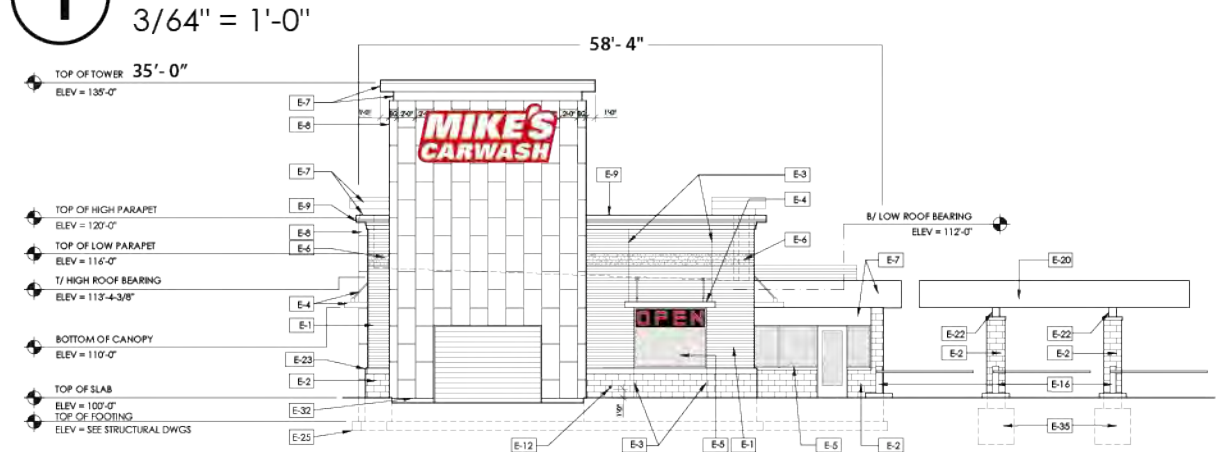


NOTE: Sign Does Not Scroll or Flash!

18" Red Letters Adjustable to fit Window Openings
Black Background & Cabinet

Total Window Area: 49 sq. ft. - 6'-5" x 7'-8"

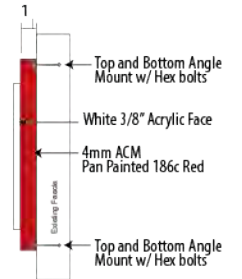
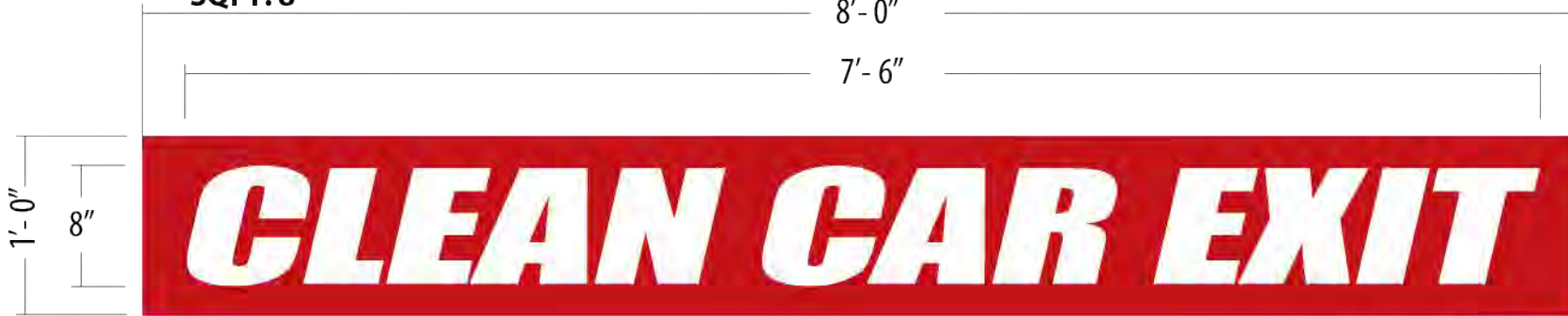
1 EAST ELEVATION



1 qty., Non Illuminated White 3/8" Acrylic Letters on 1" Pan Aluminum Panel

**2962 Breckenridge Lane
Louisville, KY**

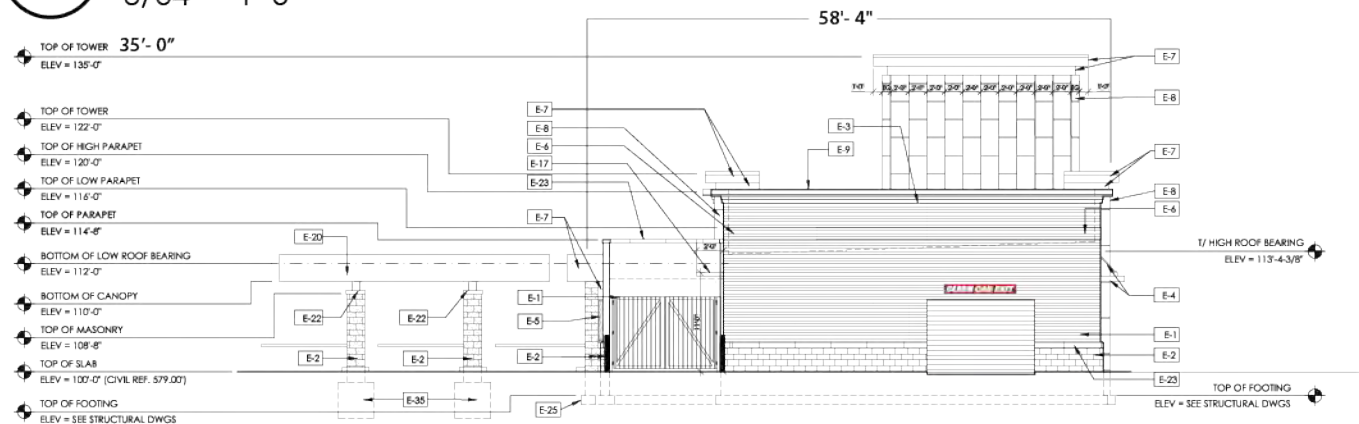
~SQFT: 8



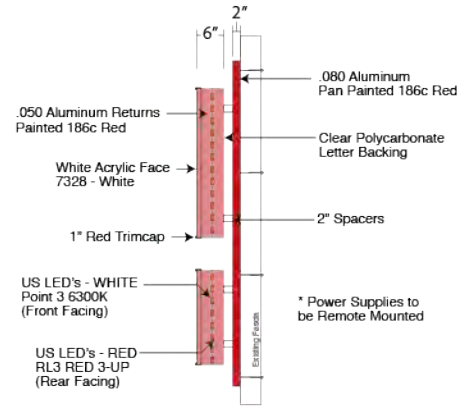
4mm ACM backer 1" deep
Top and Bottom Angle Mount
3/8" White Acrylic Letters
Hex Bolts

2 WEST ELEVATION

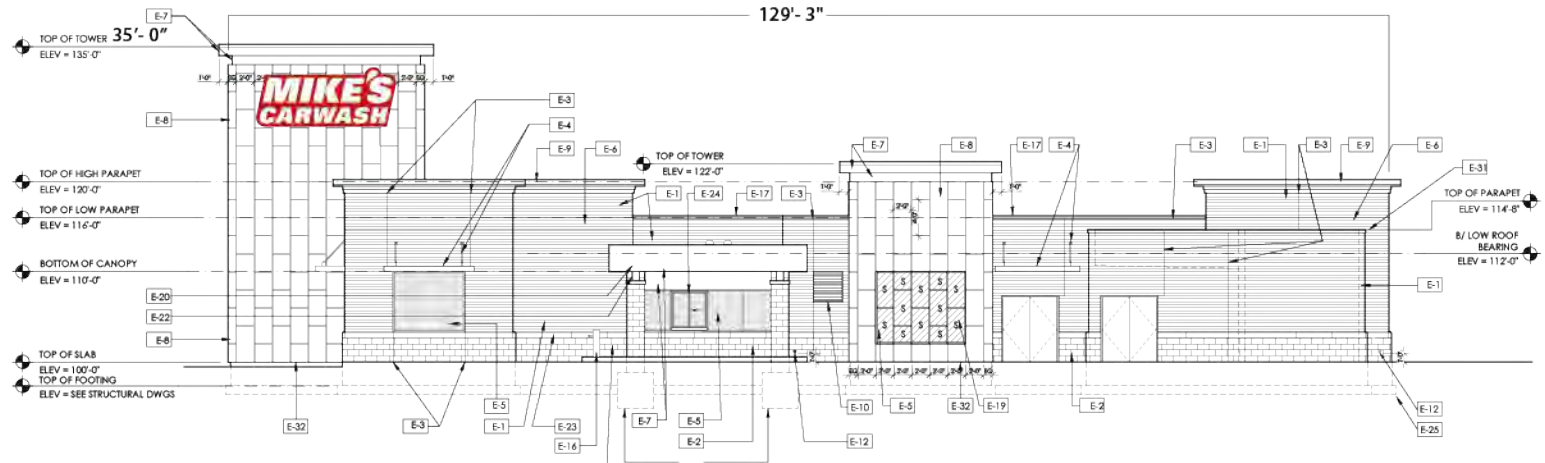
3/64" = 1'-0"



**2962 Breckenridge Lane
Louisville, KY**



1 NORTH ELEVATION
3/64" = 1'-0"



Sketch No. 20-1-72-F-MIKES-F1

Scale: 1/4" = 1'-0"

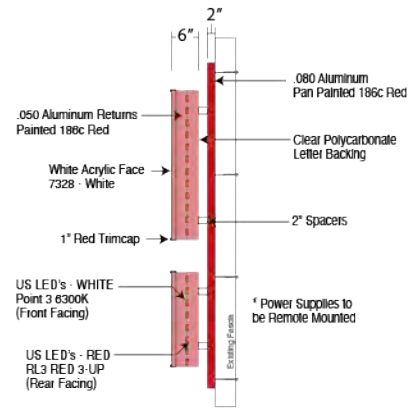
Date: 1-20-2020

Dualite

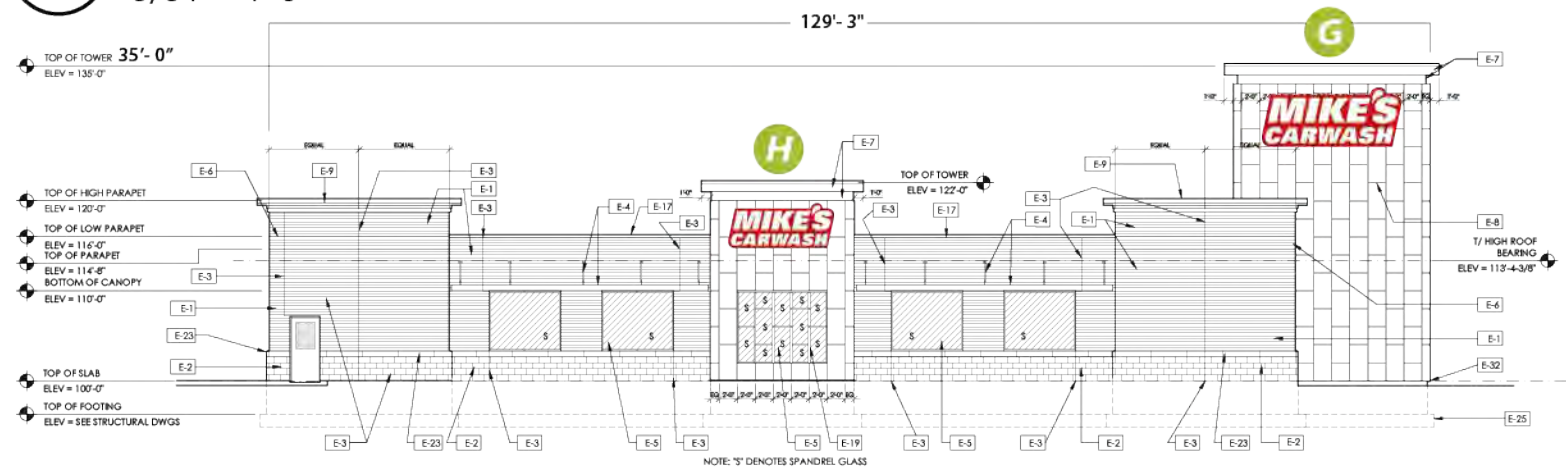
DUALITE SALES & SERVICES, INC. One Dualite Lane Williamsburg, Ohio 45176

Approval:

**2962 Breckenridge Lane
Louisville, KY**



2 SOUTH ELEVATION
3/64" = 1'-0"



Sketch No. 20-1-72-F-MIKES-G1

Scale: 1/4" = 1'-0"

Date: 1-20-2020

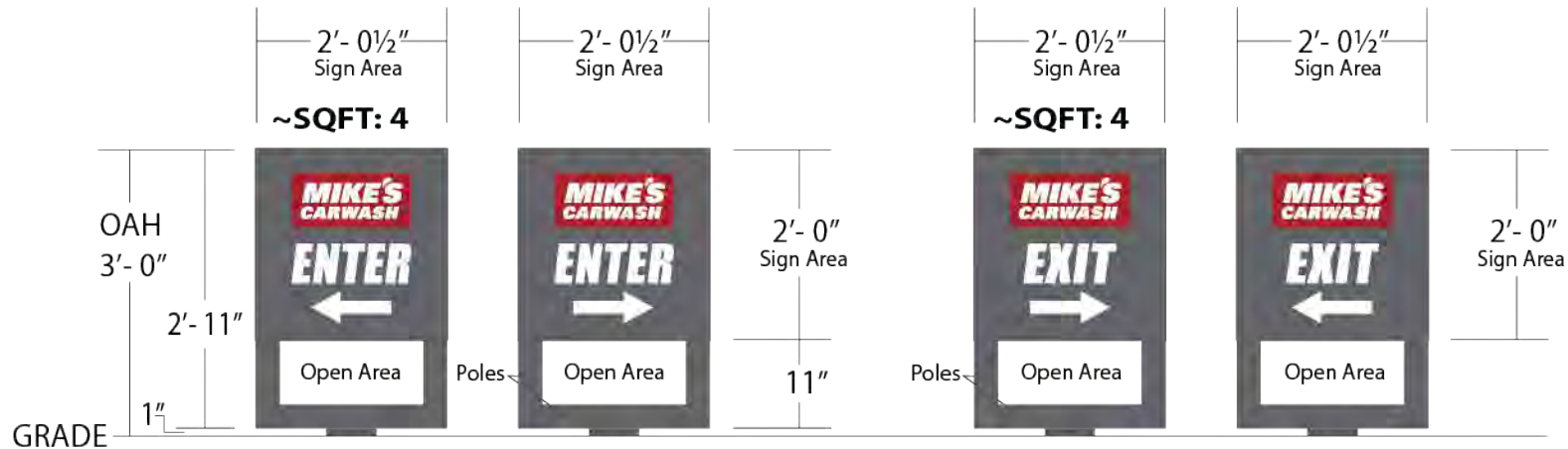
Dualite

DUALITE SALES & SERVICES, INC. One Dualite Lane Williamsburg, Ohio 45176

**2962 Breckenridge Lane
Louisville, KY**

J Double Face Enter Sign

K Double Face Exit Sign



Charcoal Gray Aluminum
Routed out logo and copy.
Logo is digitally printed.

**MIKE'S CARWASH red background is opaqued
so red does not illuminate at night.**

**2962 Breckenridge Lane
Louisville, KY**

W.A.R. ~ SQ. FT.: 8.3

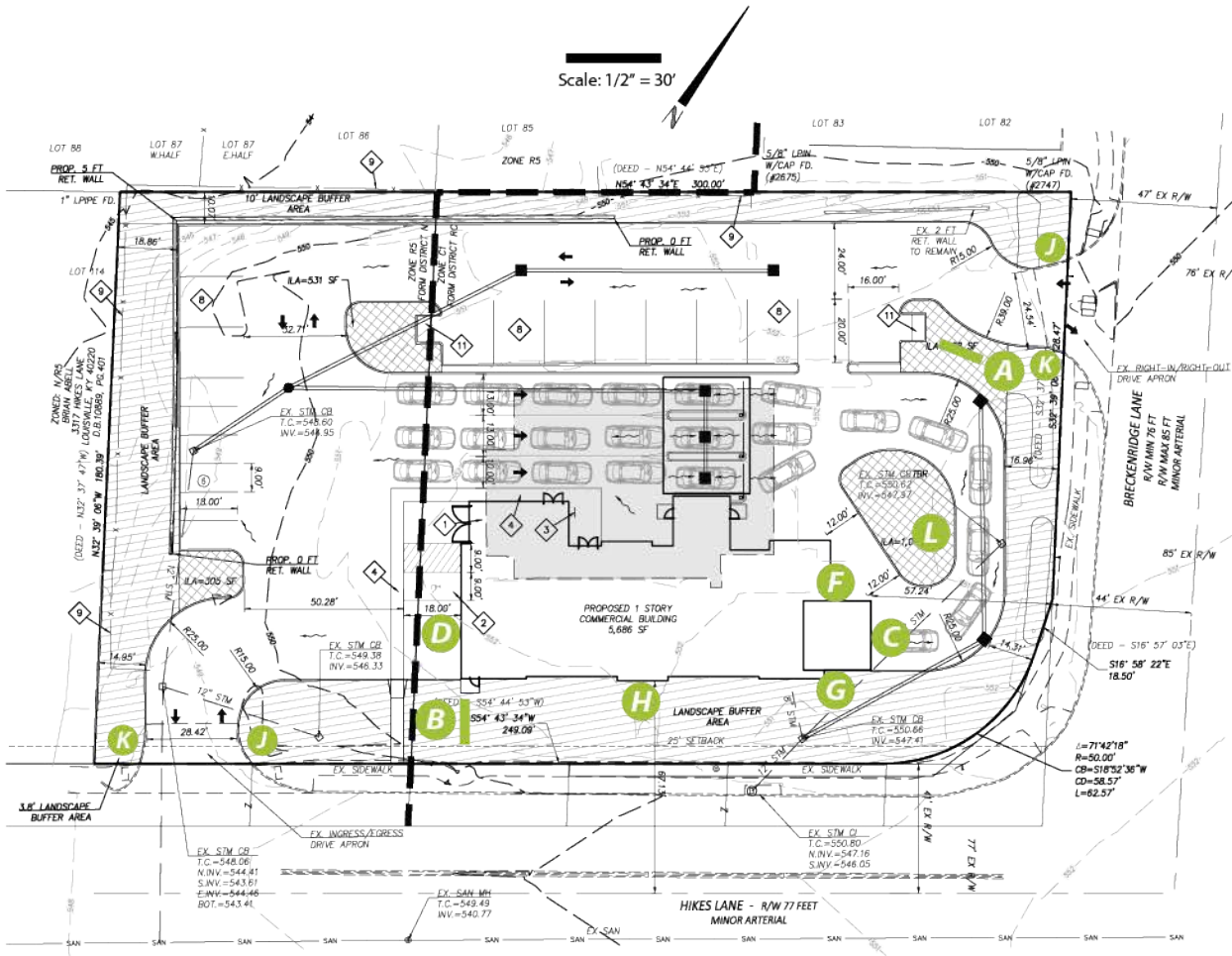


Paint & Vinyl Application

50" x 24" Single Face Aluminum Panel Sign
2" Radius Corners
3" x 3" x 8'-0" Pole for Direct Burial
.125" Thick Aluminum

Gloss Black Background
PMS 107 Yellow Vinyl Opaque
White Vinyl Opaque

**2962 Breckenridge Lane
Louisville, KY**



- A** 10'-0" X 10'-0" Logo/EMC Sign 87 sqft
- B** 5'-0" x 10'-0" Monument Sign 50 sqft
- C** 6'-7" x 15'-6" Mikes CW Wall Sign 102 sqft
- D** 1'-0" x 8'-0" Clean Car Exit Wall Sign 8 sqft
- F** 6'-7" x 15'-6" Mikes CW Wall Sign
- G** 6'-7" x 15'-6" Mikes CW Wall Sign 102 sqft
- H** 5'-0" x 11'-9 1/4" Mikes CW Wall Sign 59 sqft
- J** 2 qty., 2'-0" x 2'-0 1/2" Enter Signs 4 sqft
- K** 2 qty., 2'-0" x 2'-0 1/2" Exit Signs 4 sqft
- L** 50" x 24" W.A.R. Sign 8.3 sqft
- 2'-0" x 6'-0" Interior OPEN Sign 12 sqft