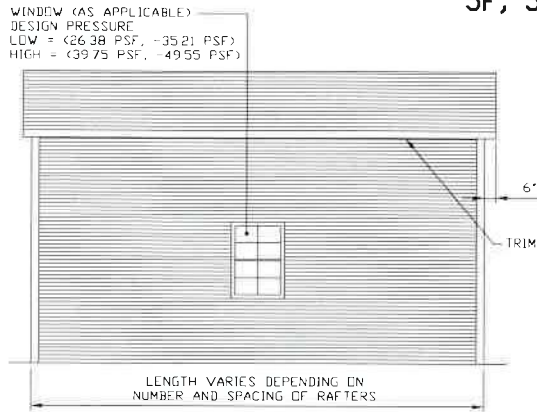
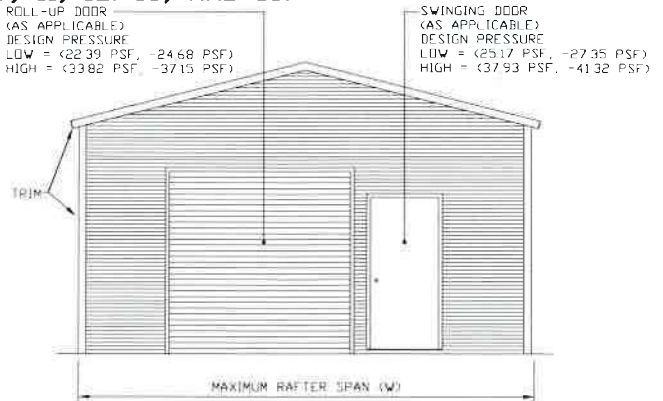


BOX EAVE FRAME RAFTER STRUCTURE (Sheets 4, 4A, 4B, 4C, 4D, 4E, 5, 5A, 5B, 5C, 5D, 5E, 5F, 5G, 8, 9, 11, 12, 13, AND 15)

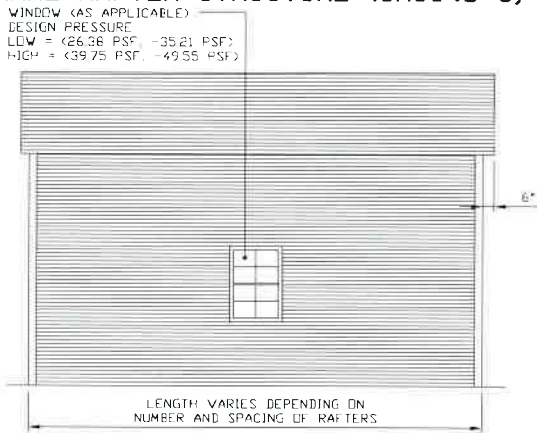


TYPICAL SIDE ELEVATION-HORIZONTAL ROOF
SCALE: NTS

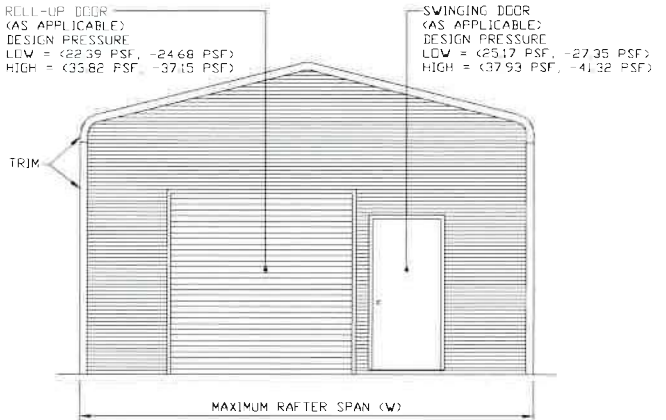


TYPICAL END ELEVATION-HORIZONTAL ROOF
SCALE: NTS

BOX FRAME RAFTER STRUCTURE (Sheets 6, 6A, 7, 7A, 7B, 7C, 8, 10, 11, 12, AND 14)



TYPICAL SIDE ELEVATION
SCALE: NTS



TYPICAL END ELEVATION
SCALE: NTS

**MOORE AND ASSOCIATES
ENGINEERING AND CONSULTING, INC.**

DRAWN BY: JRS

CHECKED BY: PDH

PROJECT MGR: WSH

CLIENT: CAROLINA
CARPORTS

CAROLINA CARPORTS, INC.
187 CARDINAL RIDGE TRAIL
DOBSON, NC 27017
30'x20' ENCLOSED STRUCTURE

DATE: 1-15-18

SCALE: NTS

JOB NO: 15156S 16135S
17324S

SHT. 3B

DWG. NO: SK-3

REV.: 7

THIS DOCUMENT IS THE PROPERTY OF MOORE AND ASSOCIATES ENGINEERING AND CONSULTING. THE UNAUTHORIZED REPRODUCTION, COPYING, OR OTHERWISE USE OF THIS DOCUMENT IS STRICTLY PROHIBITED AND ANY INFRINGEMENT THEREUPON MAY BE SUBJECT TO LEGAL ACTION.