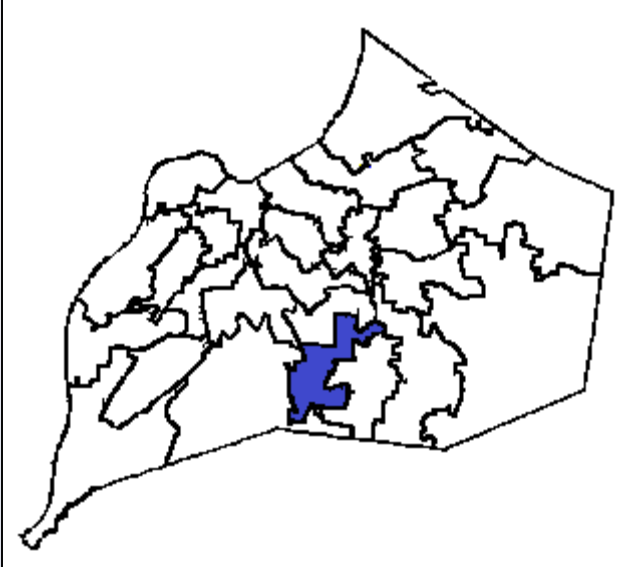
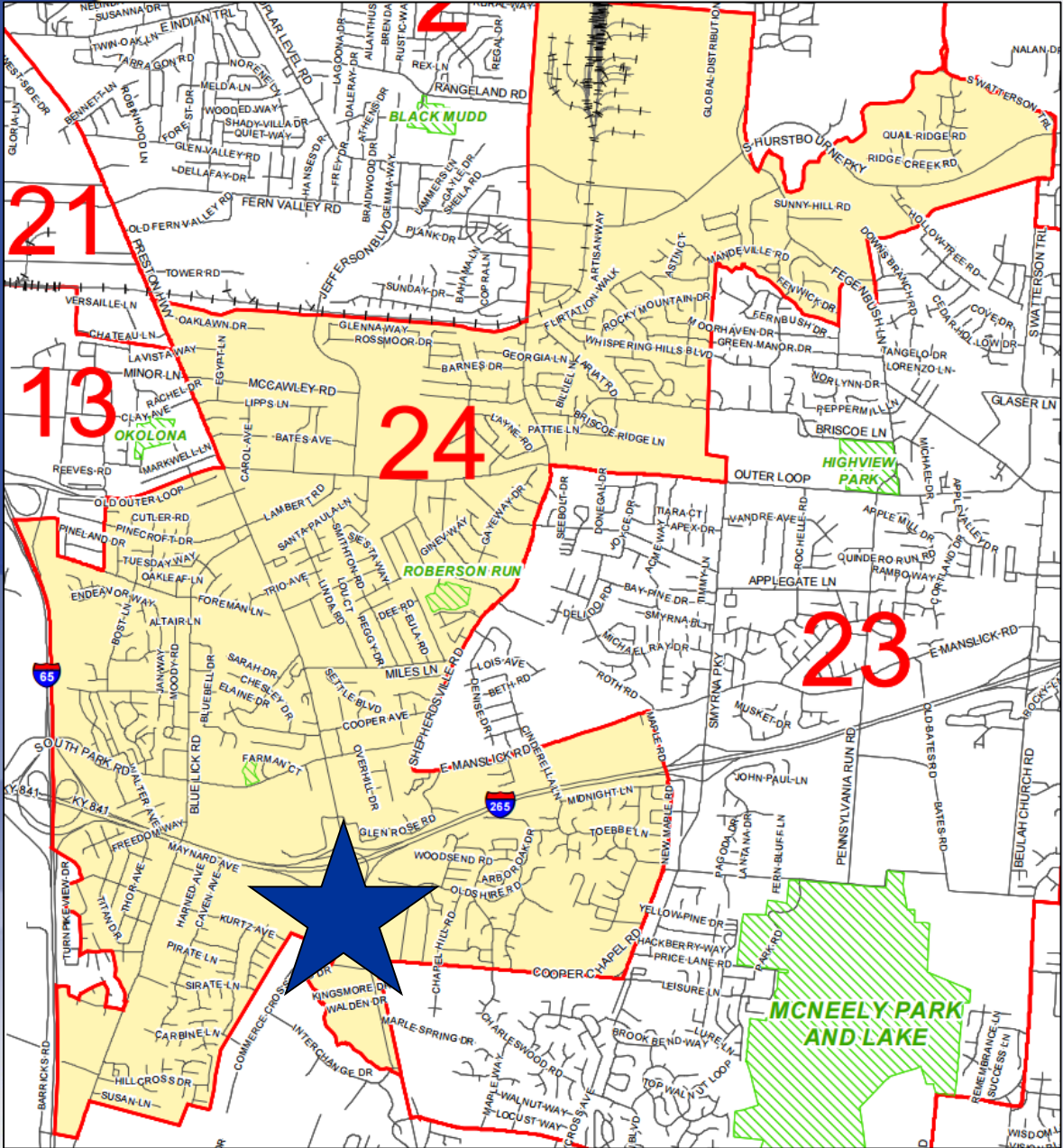


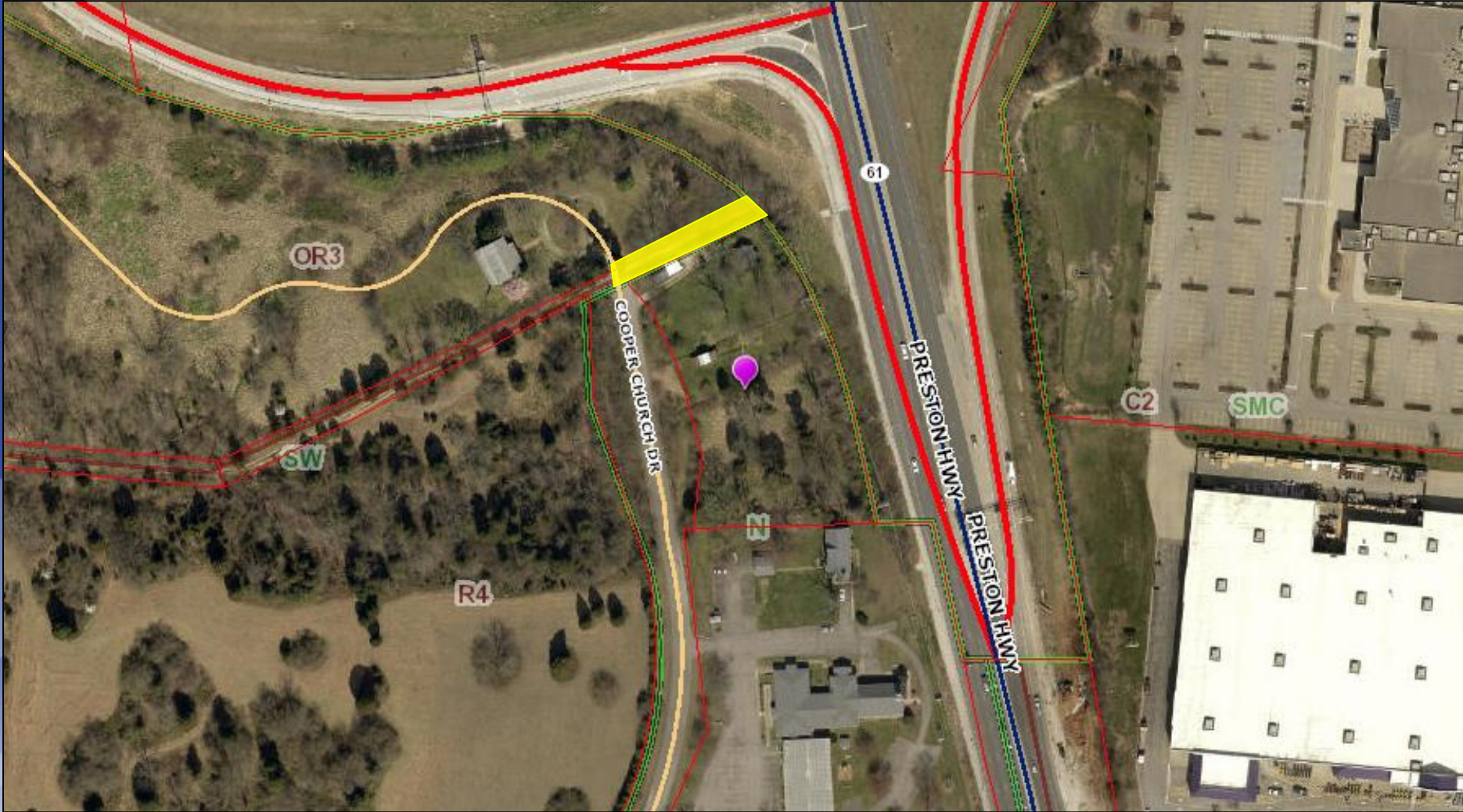
19-STRCLOSURE-0013 COMMERCE CROSSINGS APARTMENTS ROW CLOSURE



Planning & Zoning Committee
February 25, 2020



**9711 Cooper Church Drive
District 24 - Madonna Flood**



Requests

- Closure of an unnamed, unimproved ROW

Case Summary

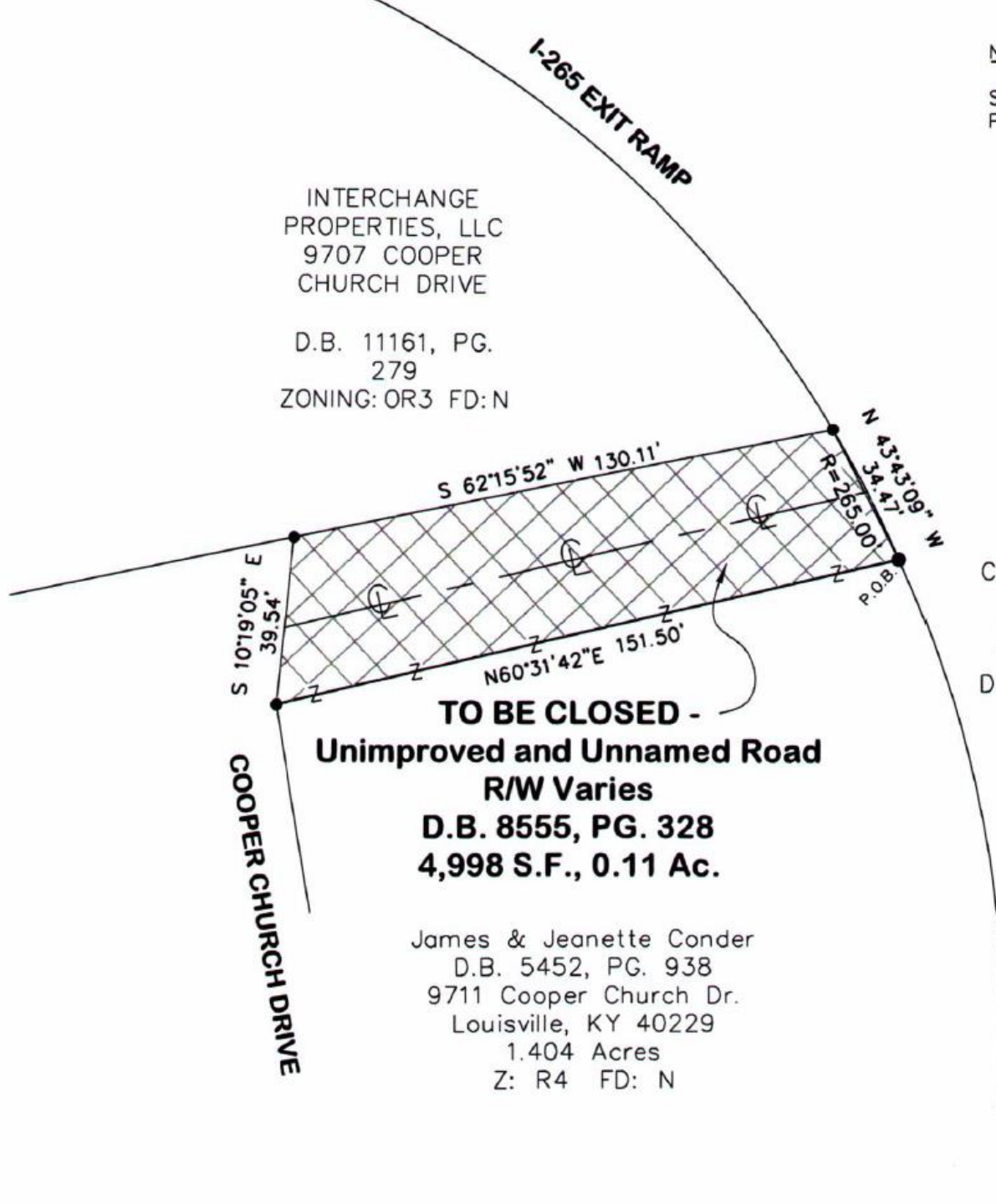
- Related to 19-ZONE-0028 for an apartment development
- ROW is unimproved
- Stubs into interchange ROW to the east

NOTES

SEE APPROVED DEVELOPMENT
PLAN IN CASE 19ZONE002

INTERCHANGE
PROPERTIES, LLC
9707 COOPER
CHURCH DRIVE

D.B. 11161, PG.
279
ZONING: OR3 FD:N



COMMONWEALTH OF
KENTUCKY
DEPARTMENT OF
TRANSPORTATION
D.B. 5088, PG. 100

TO BE CLOSED -
Unimproved and Unnamed Road
R/W Varies

D.B. 8555, PG. 328
4,998 S.F., 0.11 Ac.

James & Jeanette Conder
D.B. 5452, PG. 938
9711 Cooper Church Dr.
Louisville, KY 40229
1.404 Acres
Z: R4 FD: N

ESTON HWY R/W VARIES

Public Meetings

- LD&T meetings on 1/16/2020
- Planning Commission public hearing 1/23/2020
 - No one spoke in opposition.
 - The Commission recommended approval of the street closure by a vote of 9-0.