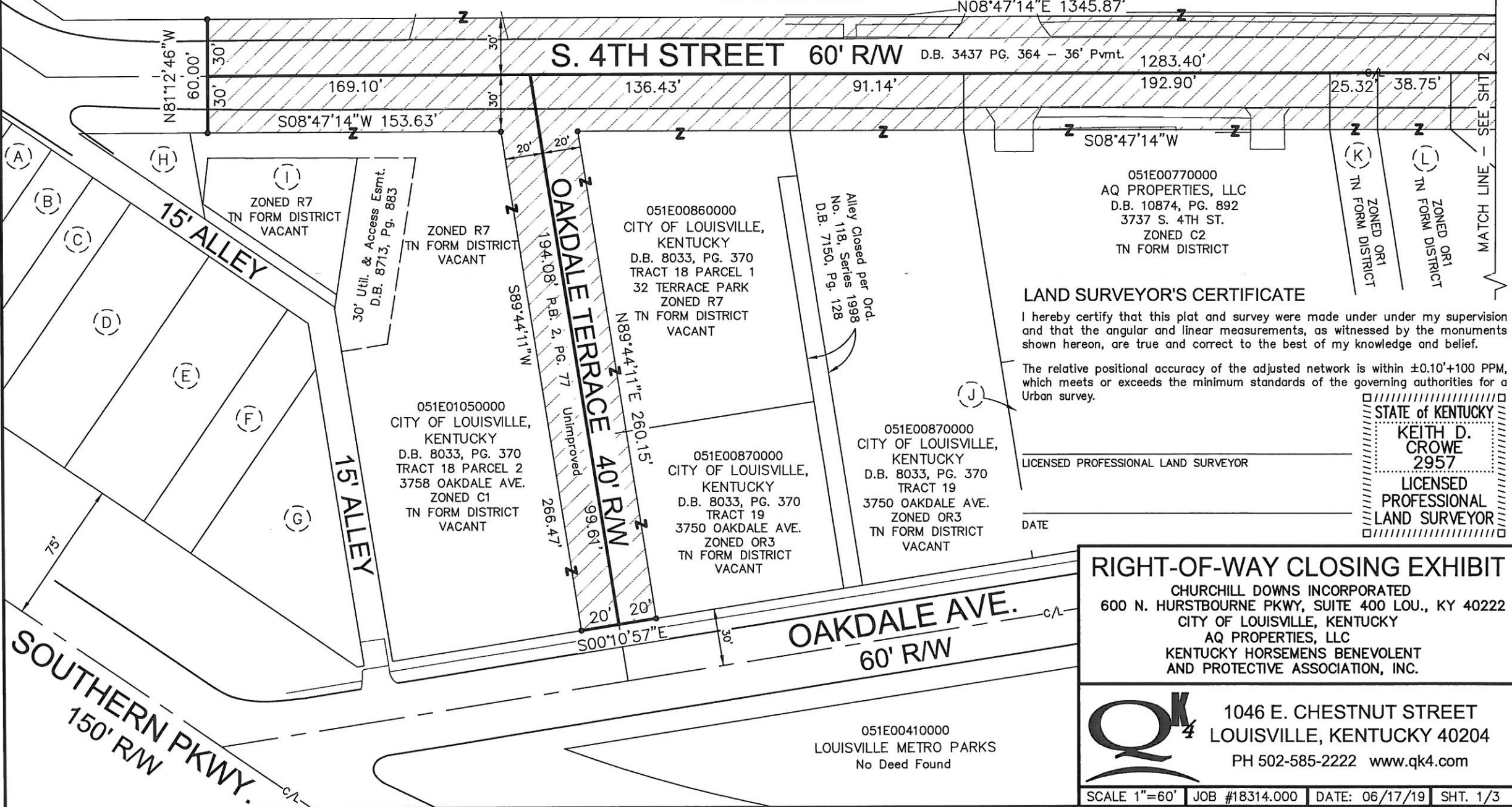


051G00060000
 CITY OF LOUISVILLE, KENTUCKY
 D.B. 8033, PG. 370
 700 CENTRAL AVE.
 ZONED R7
 CAMPUS FORM DISTRICT



DENOTES RIGHT-OF-WAY
 TO BE CLOSED 2.010 ACRES
 TOTAL AREA = 87537 Sq. Ft.



LAND SURVEYOR'S CERTIFICATE

I hereby certify that this plat and survey were made under under my supervision and that the angular and linear measurements, as witnessed by the monuments shown hereon, are true and correct to the best of my knowledge and belief.

The relative positional accuracy of the adjusted network is within ±0.10'+100 PPM, which meets or exceeds the minimum standards of the governing authorities for a Urban survey.

STATE of KENTUCKY
 KEITH D. CROWE
 2957
 LICENSED PROFESSIONAL LAND SURVEYOR

051E00870000
 CITY OF LOUISVILLE, KENTUCKY
 D.B. 8033, PG. 370
 TRACT 19
 3750 OAKDALE AVE.
 ZONED OR3
 TN FORM DISTRICT
 VACANT

DATE _____

RIGHT-OF-WAY CLOSING EXHIBIT

CHURCHILL DOWNS INCORPORATED
 600 N. HURSTBOURNE PKWY, SUITE 400 LOU., KY 40222
 CITY OF LOUISVILLE, KENTUCKY
 AQ PROPERTIES, LLC
 KENTUCKY HORSEMENS BENEVOLENT
 AND PROTECTIVE ASSOCIATION, INC.



1046 E. CHESTNUT STREET
 LOUISVILLE, KENTUCKY 40204
 PH 502-585-2222 www.qk4.com

DENOTES RIGHT-OF-WAY
TO BE CLOSED 2.010 ACRES
TOTAL AREA = 87537 Sq. Ft.

051G00060000
CITY OF LOUISVILLE, KENTUCKY
D.B. 8033, PG. 370
700 CENTRAL AVE.
ZONED R7
CAMPUS FORM DISTRICT



N08°47'14"E 1345.87'

S. 4TH STREET 60' R/W

1283.40' D.B. 3437 PG. 364 - 36' Pvmt.

60.00' 61.84' 92.90' 28.17' 26.50' 29.00' 27.00' 27.75' 28.25' 31.17' 28.00' 189.19'

S08°47'14"W

(M)
ZONED OR1
FORM DISTRICT
VACANT

051E00690000
CHURCHILL DOWNS
INCORPORATED
3717 R S. 4TH ST.
D.B. 9875, PG. 835
ZONED R7
TN FORM DISTRICT
VACANT

(N)
ZONED R7
TN FORM DISTRICT
VACANT

(O)
ZONED R7
TN FORM DISTRICT
VACANT

(P)
ZONED R7
TN FORM DISTRICT
VACANT

(Q)
ZONED R7
TN FORM DISTRICT
VACANT

(R)
ZONED R7
TN FORM DISTRICT
VACANT

(S)
ZONED R7
TN FORM DISTRICT
VACANT

(T)
ZONED R7
TN FORM DISTRICT
VACANT

(U)
ZONED R7
TN FORM DISTRICT
VACANT

(V)
ZONED R7
TN FORM DISTRICT
VACANT

(W)
ZONED R7
TN FORM DISTRICT
VACANT

(X)

(Y)

(Z)

OAKDALE AVE. 60' R/W

36' Pvmt.

051E00480000
CITY OF LOUISVILLE, KENTUCKY
D.B. 8033, PG. 370
3121 OAKDALE AVE.

Real time kinematic "RTK" survey methods were used to obtain coordinate values for this survey using Trimble R10 GPS dual frequency receivers.

The bearing datum for this plat is Grid North. Horizontal control is based on state plane NAD 83, KY North Zone, State Plane Coordinates, US Survey Foot.

See related case 18DEVPLAN1165

LAND SURVEYOR'S CERTIFICATE

I hereby certify that this plat and survey were made under under my supervision and that the angular and linear measurements, as witnessed by the monuments shown hereon, are true and correct to the best of my knowledge and belief.

The relative positional accuracy of the adjusted network is within ±0.10'+100 PPM, which meets or exceeds the minimum standards of the governing authorities for a Urban survey.

LICENSED PROFESSIONAL LAND SURVEYOR

DATE

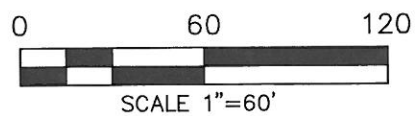
STATE OF KENTUCKY
KEITH D. CROWE
2957
LICENSED PROFESSIONAL LAND SURVEYOR

RIGHT-OF-WAY CLOSING EXHIBIT

CHURCHILL DOWNS INCORPORATED
600 N. HURSTBOURNE PKWY, SUITE 400 LOU., KY 40222
CITY OF LOUISVILLE, KENTUCKY
AQ PROPERTIES, LLC
KENTUCKY HORSEMEN'S BENEVOLENT AND PROTECTIVE ASSOCIATION, INC.



1046 E. CHESTNUT STREET
LOUISVILLE, KENTUCKY 40204
PH 502-585-2222 www.qk4.com



MATCH LINE - SEE SHT. 1

(L)

(M)

(N)

(O)

(P)

(Q)

(R)

(S)

(T)

(U)

(V)

(W)

(X)

(Y)

(Z)

c/L

c/L

