

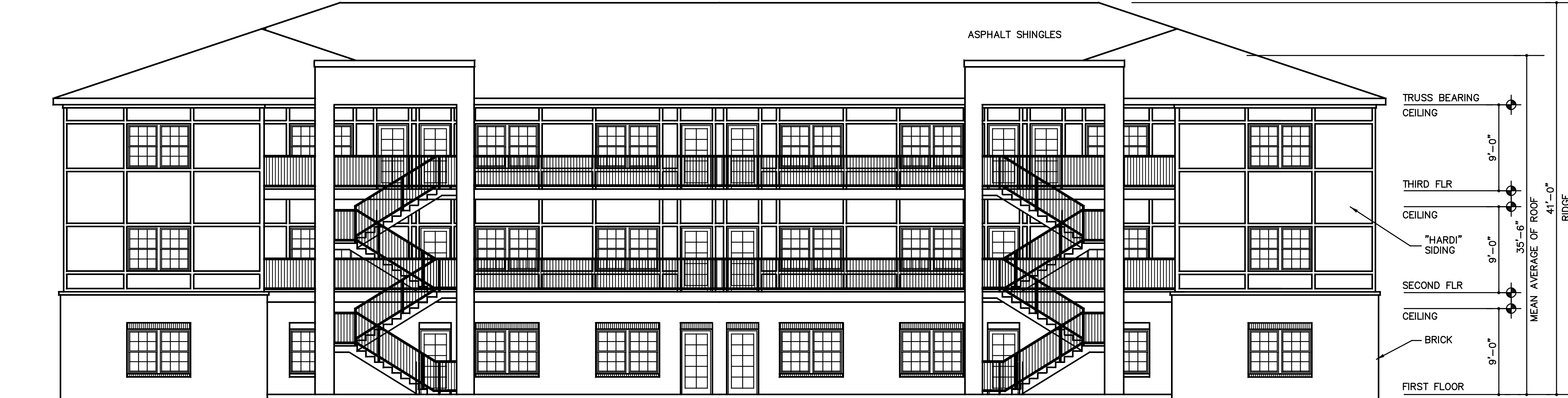
END ELEVATION — BUILDING # 3
SCALE: 1/8" = 1'-0"



FRONT ELEVATION — BUILDING # 3
SCALE: 1/8" = 1'-0"



END ELEVATION — BUILDING # 4
SCALE: 1/8" = 1'-0"



FRONT ELEVATION — BUILDING # 4
SCALE: 1/8" = 1'-0"



END ELEVATION — BUILDING # 6
SCALE: 1/8" = 1'-0"



FRONT ELEVATION — BUILDING # 6
SCALE: 1/8" = 1'-0"



studio **kremer** architects
1231 S Shelby St, Louisville, KY 40203
TEL 502.499.1100 FAX 502.499.1101

JASON ORTHOBER
DAVID WEIS

PRELIMINARY BUILDING ELEVATIONS
HURSTBOURNE POINT
APARTMENTS
LOUISVILLE, KENTUCKY

DATE: 2.16.22
DRAWN BY: SK
CHECKED BY: SKA
REVISIONS:

2021-81

PR03