

BUILDGIN DESIGN
NOTES

BUILDING MATERIALS:

IFIELD' PANEL:
FLAT METAL PANELS: 1" W x 1" D JOINTS;
COLOR: LIGHT GRAY
GROUND LEVEL WATERTABLE:
2" HIGH, RIBBED METAL PANEL; NO JOINTS;
COLOR: DARK GRAY
LOWER LEVEL ACCENT BAND:
8" HIGH, FLAT METAL PANELS: 1" W x 1" D JOINTS;
COLOR: DARK GRAY
UPPER LEVEL ACCENT BAND:
ANGLED METAL PANELS: 6" PROJECTION;
1" W x 1" D JOINTS; COLOR: DARK GRAY
ENTRANCE PROJECTION:
FLAT METAL PANELS: 1" W x 1" D JOINTS;
COLOR: EUROFIN'S ORANGE
LOWER LEVEL WINDOWS:
8" HIGH (2 TO 10' ABOVE GRADE) ALUMINUM AND
GLASS STOREFRONT SYSTEM;
MULLION FINISH COLOR: BLACK
UPPER LEVEL WINDOWS:
8" HIGH (2 TO 10' ABOVE FLOOR) ALUMINUM AND
GLASS STOREFRONT SYSTEM;
MULLION FINISH COLOR: BLACK

FACADE TREATMENT:

SOUTH FACADE (FRONTING PLANTSIDE DR.)
GROUND LEVEL (LABORATORIES):
186' LONG
175' LONG OF WINDOWS (94%)
175' WITH 5' PROJECTION/RECESSION (94%)
UPPER LEVEL (OFFICE):
188' LONG
175' OF WINDOWS (94%)
175' WITH 5' PROJECTION/RECESSION (94%)
EAST FACADE (FRONTING SHUTTE STATION PL.)
GROUND LEVEL (LABORATORIES/MANUFACTURING):
288' LONG
62' OF WINDOWS (22%)
(12) TREES WITHIN 15' OF BUILDING AT APPROX
25' ON CENTER (100% OF FACADE)
UPPER LEVEL (OFFICE):
219' LONG
144' OF WINDOWS (66%)
(12) TREES WITHIN 15' OF BUILDING AT APPROX
25' ON CENTER

NORTH FACADE
GROUND LEVEL (DOCK / WAREHOUSE / UTILITY SPACE):
133' LONG
83' LONG, SINGLE STORY, 32' DEEP BUILDING
PROJECTION (62%)
UPPER LEVEL (LABORATORIES):
133' LONG
56' OF WINDOWS (42%)
13' STAIR TOWER PROJECTION (10%)

WEST FACADE
GROUND LEVEL (LABORATORIES/UTILITY SPACE):
212' LONG
68' OF WINDOWS (32%)
(2) GLASS ENTRANCE PROJECTIONS, TOTALING
42' LONG (20%)
UPPER LEVEL (OFFICE):
212' LONG
142' OF WINDOWS (67%)
42' LONG, 15' DEEP RECESSED BALCONY (20%)

BUILDING WINDOWS:

SOUTH FACADE (FRONTING PLANTSIDE DR.)
GROUND LEVEL (LABORATORIES):
186' LONG
175' LONG OF WINDOWS (94%)

EAST FACADE (FRONTING SHUTTE STATION PL.)
GROUND LEVEL (LABORATORIES/MANUFACTURING):
288' LONG
62' OF WINDOWS (22%)

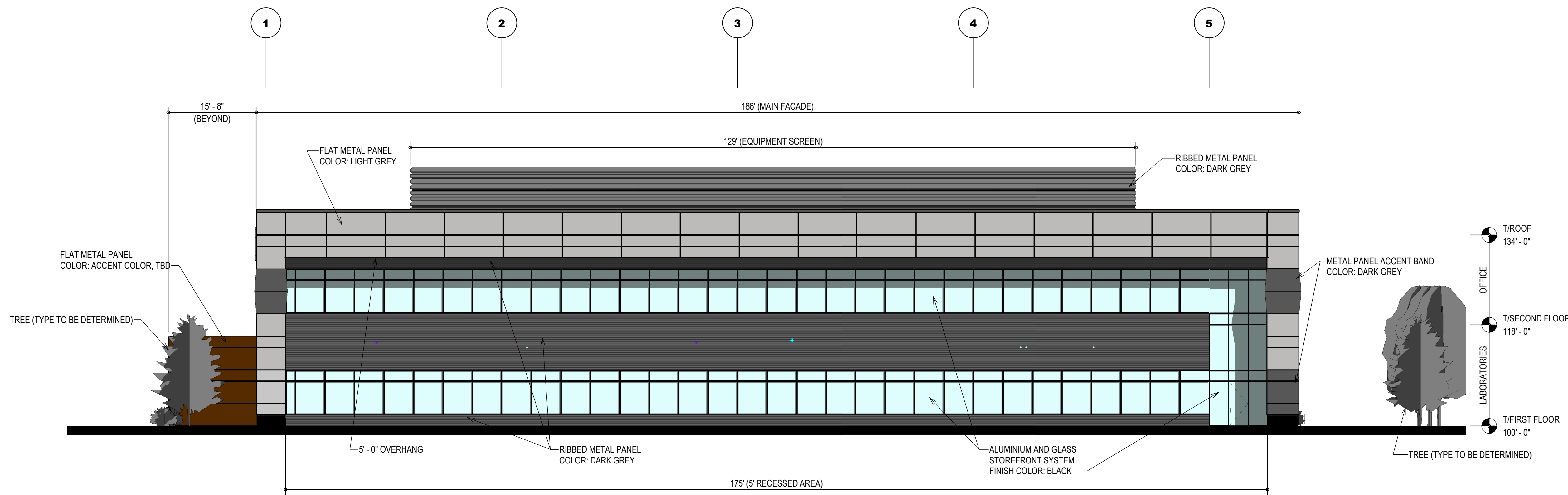
UPPER LEVEL (OFFICE)
219' LONG
144' OF WINDOWS (66%)

*LOWER LEVEL BUILDING USE ON EAST FACADE
(LABORATORY MANUFACTURING) LIMITS THE ABILITY TO
PROVIDE WINDOWS AT GROUND LEVEL. MATERIAL
CHANGES OCCUR VERTICALLY ALONG ENTIRE FACADE
AS WELL AS TREE PLANTINGS ALONG ENTIRE FACADE.
ADDITIONALLY UPPER LEVEL CONTAINS OVER 60%
WINDOW ALONG FACADE.

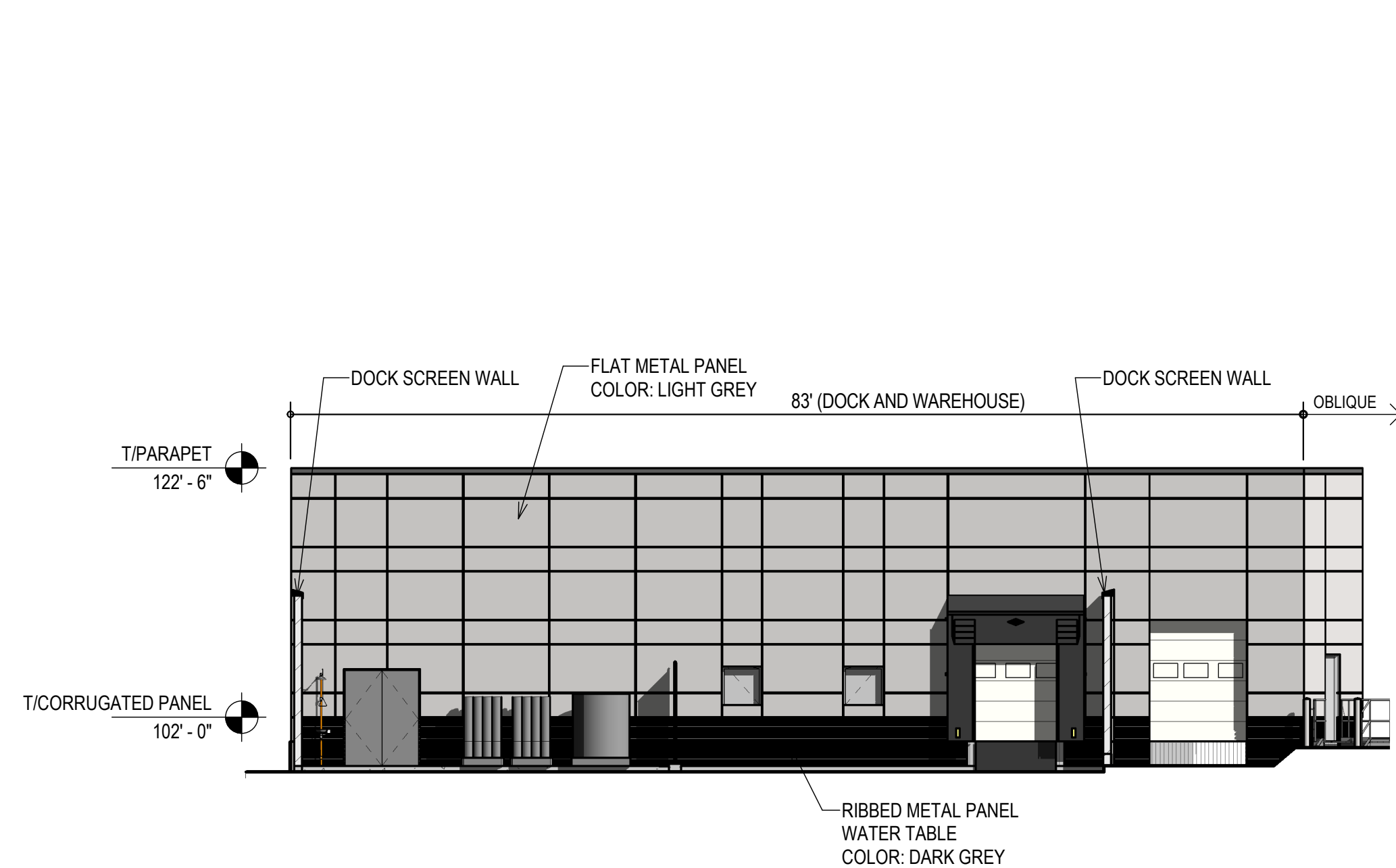
ROOF LINES / ROOFTOP EQUIPMENT SCREENING:

SOUTH FACADE (FRONTING PLANTSIDE DR.)
188' LONG
ROOF LINE VARIES AT EQUIPMENT SCREEN
ALL ROOFTOP EQUIPMENT IS SCREENED ALONG
PLANTSIDE DR.

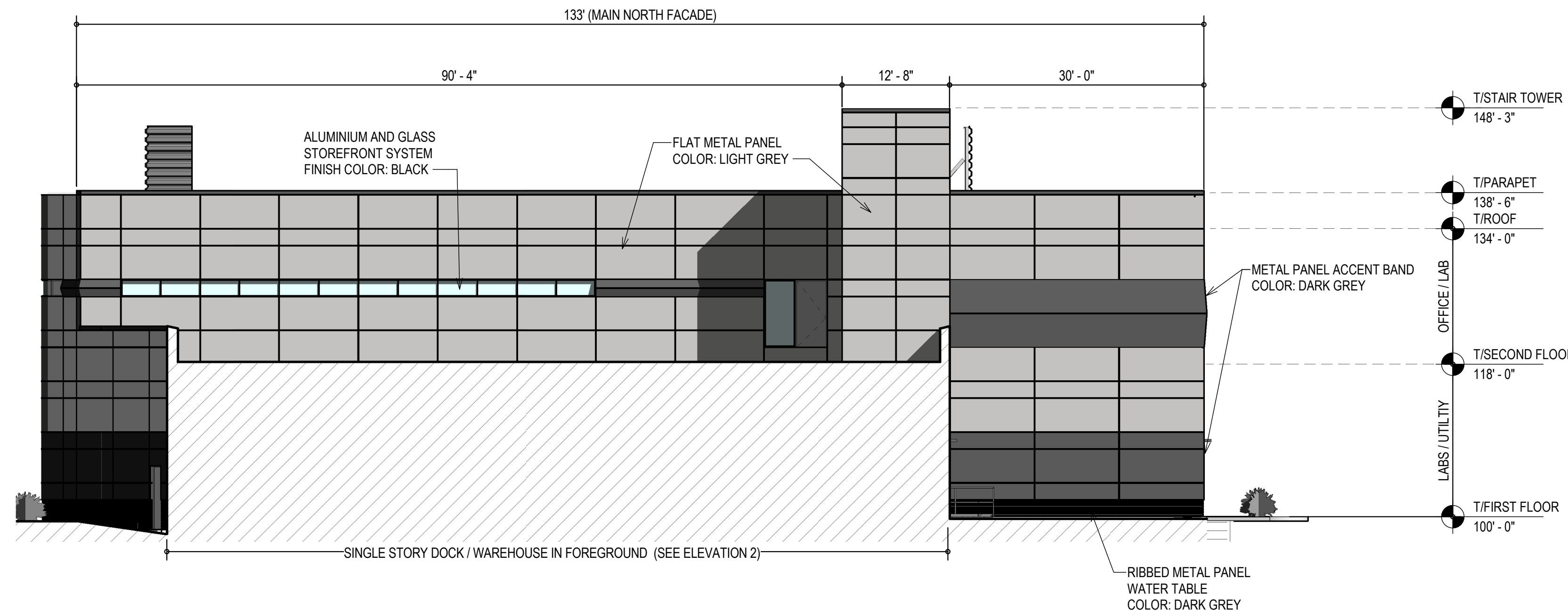
EAST FACADE (FRONTING SHUTTE STATION PL.)
288' LONG
ROOF LINE VARIES AT EQUIPMENT SCREEN & AT
SINGLE STORY DOCK/WAREHOUSE
ALL ROOFTOP EQUIPMENT IS SCREENED ALONG
SHUTTE STATION PL.



1 SOUTH ELEVATION - FROM PLANTSIDE DRIVE
3/32" = 1'-0"



2 NORTH ELEVATION - DOCK WALL
3/32" = 1'-0"



3 NORTH ELEVATION - FROM LAKE STATION PLACE
3/32" = 1'-0"

REVISION	DATE	NORTH AND SOUTH GENOMICS BUILDING EUROFINS 12701 PLANTSIDE DRIVE, LOUISVILLE, KY



PRELIMINARY
DRAWING
NOT TO BE
USED FOR
CONSTRUCTION