



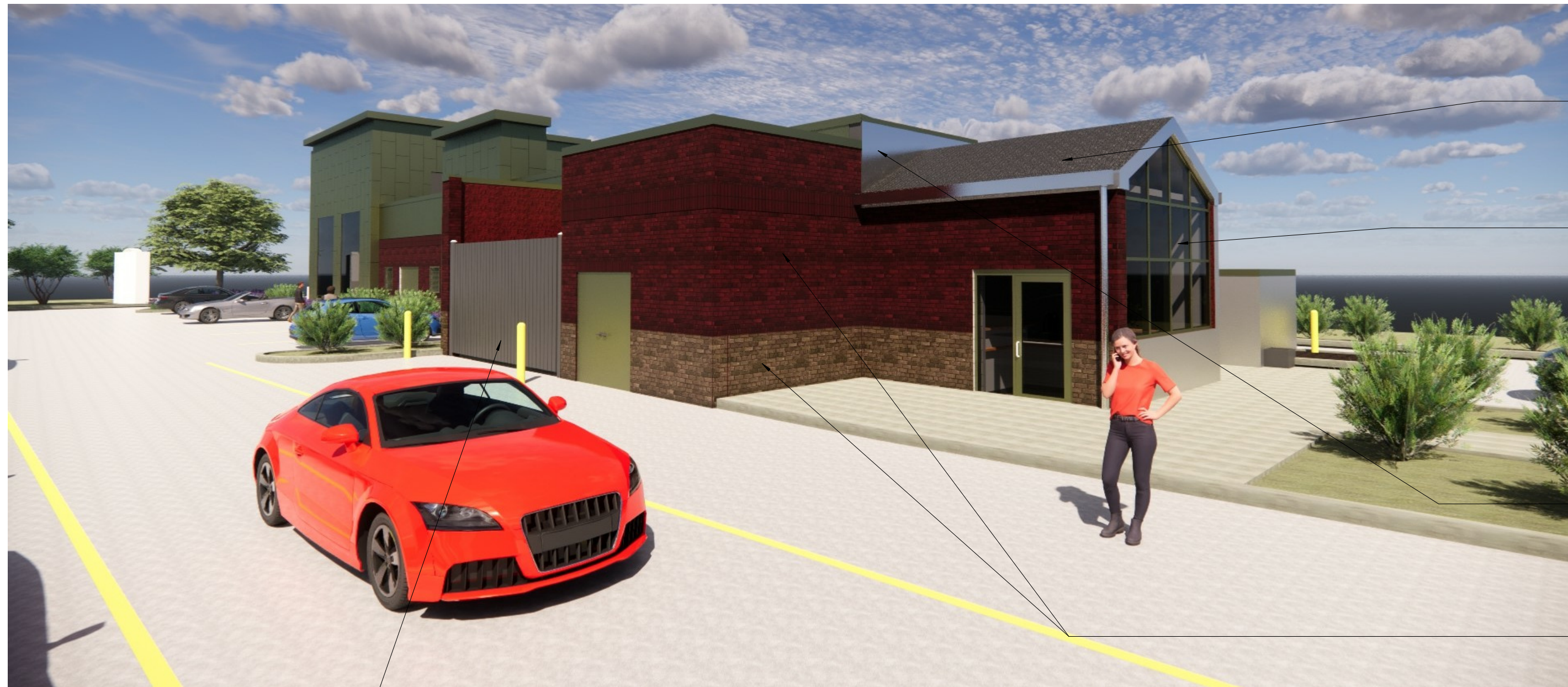
Scheme 1 - Rendering From South East

- NEW .050 ALUMINUM BREAK METAL OVER EXTERIOR GRADE PLYWOOD, FINISH: KYNAR 70% 2-COAT, COLOR: DRI-DESIGN CHAMPAGNE DRI-028
- NEW STOREFRONT FRAMING BASIS OF DESIGN: KAWNEER CURTAINWALL SYSTEM - FINISH #18 CHAMPAGNE
- EXISTING BRICK VENEER - PAINT RED - BASIS OF DESIGN: COLOR MATCH LEE MAXBRIC - MANCHESTER
- EXISTING BRICK VENEER - PAINT BUFF - BASIS OF DESIGN: COLOR MATCH LEE MAXBRIC - LIGHT RANGE BUFF
- NEW DRI-DESIGN ARCHITECTURAL ALUMINUM WALL PANEL - VERTICAL RUNNING BOND PATTERN, 2'-0" X 4'-0" TYPICAL PANEL SIZE, FINISH: KYNAR 70% 2-COAT, COLOR: DRI-DESIGN CHAMPAGNE DRI-028
- NEW STOREFRONT / CURTAINWALL MULLION TO ALIGN WITH DRI-DESSING PANEL JOINT IN SAME RUNNING BOND PATTERN (TYP.)



Scheme 1 - Rendering From South East

- EXISTING BRICK VENEER - PAINT BUFF - BASIS OF DESIGN: COLOR MATCH LEE MAXBRIC - LIGHT RANGE BUFF
- NEW LOUVERS



Scheme 1 - Rendering From North East

- NEW STAINLESS STEEL METAL ROOFING ON EXISTING ROOF STRUCTURE.
- NEW STOREFRONT FRAMING BASIS OF DESIGN: KAWNEER ENCORE STOREFRONT SYSTEM - FINISH #18 CHAMPAGNE
- NEW STAINLESS STEEL PANELS ON EXISTING CMU
- NEW BRICK VENEER TO MATCH EXISTING (PAINT)



Scheme 1 - Rendering From North West

- NEW LOUVERS
- EXISTING SPLIT FACED CMU - PAINT RED - BASIS OF DESIGN: COLOR MATCH LEE MAXBRIC - MANCHESTER
- EXISTING SPLIT FACED CMU - PAINT BUFF - BASIS OF DESIGN: COLOR MATCH LEE MAXBRIC - LIGHT RANGE BUFF
- NEW SPLIT FACED CMU HVAC EQUIPMENT SCREEN



Scheme 1 - Rendering From South West

- NEW .050 ALUMINUM BREAK METAL OVER EXTERIOR GRADE PLYWOOD, FINISH: KYNAR 70% 2-COAT, COLOR: DRI-DESIGN CHAMPAGNE DRI-028
- NEW STOREFRONT / CURTAINWALL MULLION TO ALIGN WITH DRI-DESSING PANEL JOINT IN SAME RUNNING BOND PATTERN (TYP.)
- NEW DRI-DESIGN ARCHITECTURAL ALUMINUM WALL PANEL - VERTICAL RUNNING BOND PATTERN, 2'-0" X 4'-0" TYPICAL PANEL SIZE, FINISH: KYNAR 70% 2-COAT, COLOR: DRI-DESIGN CHAMPAGNE DRI-028

- EXISTING SPLIT FACED CMU - PAINT BUFF - BASIS OF DESIGN: COLOR MATCH LEE MAXBRIC - LIGHT RANGE BUFF
- EXISTING SPLIT FACED CMU - PAINT RED - BASIS OF DESIGN: COLOR MATCH LEE MAXBRIC - MANCHESTER