

LOUISVILLE METRO YOUTH DETENTION SERVICES



LMYDS Budget Hearing

Who We Are

MISSION STATEMENT

To provide the highest quality of structured care to our youth through a variety of creative programs and services that teach accountability and provide protection to the community.

Department Structure

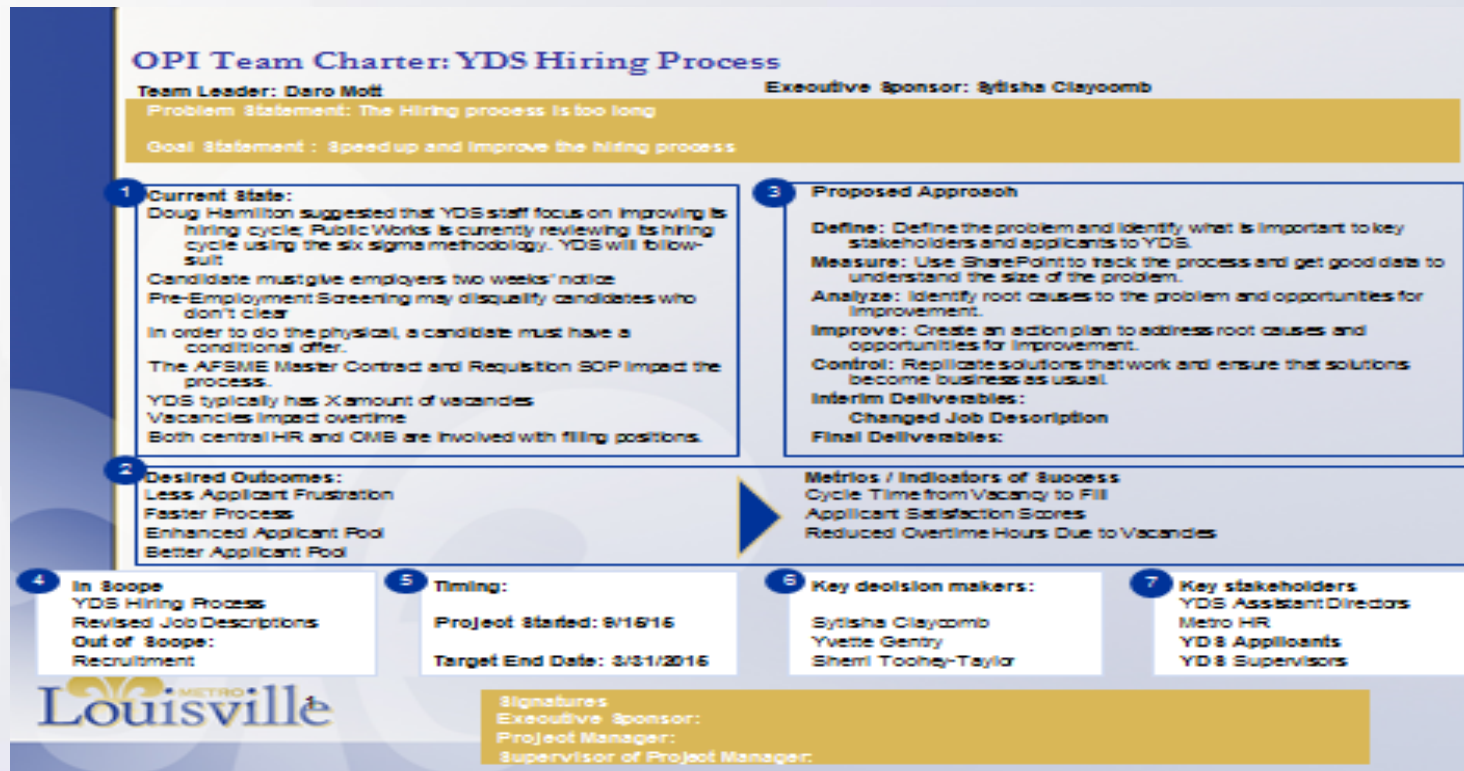
Louisville Metro Youth Detention Services (LMYDS) is comprised of three branches: Secure Detention, Community Based Services, and Administrative Support

- The **Administrative** Branch of Louisville Metro Youth Detention Services works to manage the business affairs of the organization.
- The **Secure Detention** Branch operates a 96 bed facility that works to foster a safe environment while providing structured supervision and programming to youth pending disposition.
- The **Community Based Services** (CBS) Branch of LMYDS is comprised of three units: Community Supervision (HIP/HSP), Alternative Placement Services (12 bed emergency shelter), and Court Process (5 sworn peace officers).

Innovation Work

Six Sigma Greenbelt project on Hiring Cycle:

- One of many accomplishment that resulted from this project was the accepted revision to the previous job description.



Innovation Work cont...

Revised scheduling to meet 24/7 operational needs (4 shifts to 3 and revision to CBS)

Example:

Old Schedule

| 11-7 SHIFT SCHEDULE | | | | | | |
|-------------------------------------------------------------------------------------------------------------------|---------------|----------------|--------------|-------------|-----------------|-------------|
| DATE | 4/17/2016 | 4/18/2016 | 4/19/2016 | 4/20/2016 | 4/21/2016 | 4/22/2016 |
| | SUNDAY | MONDAY | TUESDAY | WEDNESDAY | THURSDAY | FRIDAY |
| TRAIN | | | | | | |
| TRAIN | | | | | | |
| VACAT | | | | | | |
| VACAT | | | | | | |
| ENGINE | | | | | | |
| ENGINE | | | | | | |
| P.L. | MITCHELL | MITCHELL | HENRY | HENRY | HENRY | HENRY |
| 4/17/2016 | 4/18/2016 | 4/19/2016 | 4/20/2016 | 4/21/2016 | 4/22/2016 | 4/23/2016 |
| | SUNDAY | MONDAY | TUESDAY | WEDNESDAY | THURSDAY | FRIDAY |
| 1 NORTH | KAMAL | KAMAL | KAMAL | KAMAL | KAMAL | ONEIL |
| 2A-1B | HUGHES | HUGHES | HUGHES | HOBBS | HOBBS | HUGHES |
| 2C-2D | WILLIAMS/POLK | HOBBS/WILLIAMS | PORTER/HOBBS | PORTER/POLK | PORTER/WILLIAMS | PORTER/POLK |
| 1 SOUTH | | | | | ONEIL | |
| 2E-2F | | | | | | |
| 2G-2H | | | | | | |
| 1 NORTH | ONEIL | ONEIL | N.CARTER | N.CARTER | N.CARTER | N.CARTER |
| 2A-1B | WILSON | WILSON | WILSON | WILSON | WILSON | WILLIAMS |
| 2C-2D | JOHNSON | JOHNSON | JOHNSON | JOHNSON | POLK/HUGHES | HUGHES |
| 4/17/2016 | 4/18/2016 | 4/19/2016 | 4/20/2016 | 4/21/2016 | 4/22/2016 | 4/23/2016 |
| STAFF WHO SIGNED UP TO WORK OVERTIME ON THE DATES LISTED... THESE STAFF NEED TO BE CONTACTED IF SOMEONE CALLS OFF | | | | | | |
| | HAWKINS | HAWKINS | HAWKINS | HAWKINS | HARDEN | DELOACH |
| | DELOACH | HOLLINS | HOLLINS | HARDEN | HARDEN | DELOACH |
| | HARDEN | DELOACH | HARDEN | HARDEN | DELOACH | |
| | HARDEN | GOFORTH | GOFORTH | | | |
| | | | | | | |
| | | | | | | |

New schedule

| Louisville Metro Youth Detention Center | | | | | | | | | | | | | | | | | | | | | | | | | | | | | | | | | | |
|-----------------------------------------|--------|---|---|---|---|-----|-----|-----|---|-----|----|----|----|----|----|----|----|----|----|----|----|----|----|----|----|----|----|----|----|----|----|---|---|---|
| April 2016 | | | | | | | | | | | | | | | | | | | | | | | | | | | | | | | | | | |
| 3rd shift | | | | | | | | | | | | | | | | | | | | | | | | | | | | | | | | | | |
| 3rd shift | Date | 1 | 2 | 3 | 4 | 5 | 6 | 7 | 8 | 9 | 10 | 11 | 12 | 13 | 14 | 15 | 16 | 17 | 18 | 19 | 20 | 21 | 22 | 23 | 24 | 25 | 26 | 27 | 28 | 29 | 30 | | | |
| 3rd shift Supervisor | D.O.P. | F | S | S | M | T | W | T | F | S | S | M | T | W | T | F | S | S | M | T | W | T | F | S | S | M | T | W | T | F | S | | | |
| Mitchell, Joey (Supervisor II) | | O | O | | | VAC | VAC | VAC | O | O | | | | | | O | O | | | | | | O | O | | | | | | | O | O | | |
| (Supervisor I) | | | | | | | | | | | | | | | | | | | | | | | | | | | | | | | | | | |
| Henry, Jonathan (Supervisor I) | | | | | O | O | | | | | | O | O | | | | O | O | | | | | | | O | O | | | | | | | | |
| TOTAL | | 2 | 2 | 2 | 2 | 2 | 2 | 2 | 2 | 2 | 2 | 2 | 3 | 3 | 3 | 2 | 2 | 2 | 2 | 3 | 3 | 3 | 2 | 2 | 2 | 2 | 2 | 3 | 3 | 3 | 2 | 2 | | |
| Senior Y.P.W | D.O.E | F | S | S | M | T | W | T | F | S | S | M | T | W | T | F | S | S | M | T | W | T | F | S | S | M | T | W | T | F | S | | | |
| Kamal, Ibrahim | ***** | O | O | | | | | | O | O | | | | | | O | O | | | | | | | O | O | | | | | | | O | O | |
| Carter, Natalie | ***** | | | O | O | | | | | O | O | | | | | O | O | | | | | | | | O | O | | | | | | | O | O |
| O'Neil, Christopher | ***** | | | | | O | O | | | VAC | | | O | O | | | | | O | O | | | | | | | O | O | | | | | O | O |
| TOTAL | | 2 | 2 | 2 | 2 | 2 | 2 | 3 | 2 | 1 | 2 | 2 | 2 | 2 | 3 | 2 | 2 | 2 | 2 | 2 | 3 | 2 | 2 | 2 | 2 | 2 | 2 | 2 | 3 | 2 | 2 | | | |
| Youth Program Worker | D.O.P. | 1 | 2 | 3 | 4 | 5 | 6 | 7 | 8 | 9 | 10 | 11 | 12 | 13 | 14 | 15 | 16 | 17 | 18 | 19 | 20 | 21 | 22 | 23 | 24 | 25 | 26 | 27 | 28 | 29 | 30 | | | |
| 3rd shift | D.O.E | F | S | S | M | T | W | T | F | S | S | M | T | W | T | F | S | S | M | T | W | T | F | S | S | M | T | W | T | F | S | | | |
| Evans, Timothy | ***** | O | O | | | | | | O | O | | | | | | O | O | | | | | | | O | O | | | | | | | O | O | |
| Hobbs, Kimberly | ***** | | O | O | | | | | | O | O | | | | | | O | O | | | | | | | O | O | | | | | | O | O | |
| Porter, Alison | ***** | | | O | O | | | | | | O | O | | | | | | O | O | | | | | | | O | O | | | | | | | |
| Wilson, Arbits | ***** | O | O | | | | | | O | O | | | | | | O | O | | | | | | | | O | O | | | | | | O | O | |
| Johnson, Mark | ***** | O | | | | | | | O | O | | | | | | | O | O | | | | | | | O | O | | | | | | O | O | |
| Polk, Shanise | ***** | | | | O | O | VAC | | | | | O | O | | | | | | O | O | | | | | | O | O | | | | | O | O | |
| Britt, Ricky | ***** | | | | | O | O | | | | | | | O | O | | | | | | O | O | | | | O | O | | | | | O | O | |
| Cooper, Alexis | ***** | | | | O | O | | | | | | | O | O | | | | | | O | O | | | | | O | O | | | | | O | O | |
| Hughes, Melvin | ***** | | | | | O | O | | | | | | | O | O | | | | | | O | O | | | | | O | O | | | | | O | O |
| Williams, Devonne | ***** | | | | O | O | | | | | | | O | O | | | | | | O | O | | | | | O | O | | | | | O | O | |
| VACANT | | x | x | x | x | x | x | x | x | x | x | x | x | x | x | x | x | x | x | x | x | x | x | x | x | x | x | x | x | x | x | x | x | |
| VACANT | | x | x | x | x | x | x | x | x | x | x | x | x | x | x | x | x | x | x | x | x | x | x | x | x | x | x | x | x | x | x | x | x | |
| VACANT | | x | x | x | x | x | x | x | x | x | x | x | x | x | x | x | x | x | x | x | x | x | x | x | x | x | x | x | x | x | x | x | x | |
| VACANT | | x | x | x | x | x | x | x | x | x | x | x | x | x | x | x | x | x | x | x | x | x | x | x | x | x | x | x | x | x | x | x | x | |
| VACANT | | x | x | x | x | x | x | x | x | x | x | x | x | x | x | x | x | x | x | x | x | x | x | x | x | x | x | x | x | x | x | x | x | |
| TOTAL | | 7 | 7 | 8 | 8 | | | | 5 | 7 | 7 | 7 | 8 | 8 | 7 | 6 | 7 | 7 | 8 | 8 | 7 | 6 | 7 | 7 | 7 | 8 | 8 | 7 | 6 | 7 | 7 | | | |
| OVERTIME | | | | | | | | | | | | | | | | | | | | | | | | | | | | | | | | | | |
| VAC = VACATION | | | | | | | | | | | | | | | | | | | | | | | | | | | | | | | | | | |
| ML = Military Leave | | | | | | | | | | | | | | | | | | | | | | | | | | | | | | | | | | |
| FMLA | | | | | | | | | | | | | | | | | | | | | | | | | | | | | | | | | | |
| PRT Cert | | | | | | | | | | | | | | | | | | | | | | | | | | | | | | | | | | |
| TRN = TRAINING | | | | | | | | | | | | | | | | | | | | | | | | | | | | | | | | | | |
| UB = Union Business | | | | | | | | | | | | | | | | | | | | | | | | | | | | | | | | | | |
| WC = Workers Comp | | | | | | | | | | | | | | | | | | | | | | | | | | | | | | | | | | |
| HOL = Holiday | | | | | | | | | | | | | | | | | | | | | | | | | | | | | | | | | | |

Industry Best Practice Standards

LMYDS has maintained best in industry accreditation standards dating back to 1983. These standards are what we base our operational practices off of, and what we use as a guiding block to be an efficient and best in class juvenile detention facility. Below you will see a list of our accreditation and scoring:

- ACA (American Correctional Association) - Audit score of 99.5%
- PREA (Prison Rape Elimination Act) - Audit score of 100%
- CHFS (Cabinet for Health and Family Services) - Licensing score of 100%
- NCCHC (National Commission on Correctional Health Care) - Audit coming up June, 2016
- DJJ (Department of Juvenile Justice) - Pass/Fail

Impacts to FY17 (road blocks)

1) Increase in population:

- * Although LMYDS is able to hold 96 residents in secure we have seen population numbers in the high 80's up to 100 over the past few months

2) OT:

- * population and vacancies play a crucial role in the amount of OT\$ utilized

3) PREA compliance:

- * 1 to 8 ratio

4) ACA standards:

- * 2 ACA standards not met which prevented a score of 100%

Community Engagement

- Holiday Celebration
- Bright Up Blight Out Louisville
- National Youth Violence Prevention Week: Included a violence prevention poster contest judged by the Mayor



Wednesday: Unite In Action

Alternative Placement Services (APS):
 5:30-6:30pm **Drum Workshop with Janet Britt**

Evening Reporting Center (ERC):
 4-6pm **H.Y.P.E program at Parkland Boys & Girls Club**

Secure:

Activities can take place between 6-8pm

- Unit activities – board games, group discussion, worksheet, etc
- Computer lab – job readiness (searching for and applying for jobs, what is included in a resume, what information do you need for application)
- Community Forum with NPHC Alumni Council – Positive dialogue between residents and members of the Divine 9
- Exercise the Anger Away– Use physical education classes to demonstrate healthy ways to exercise can be used to release anger and stress (Zumba, yoga, martial arts, hip hop)
- Library – reading group, movie and dialogue, smart board for group work.

Poster Contest – art project with the residents as it relates to youth violence, have a group judge the art work and select top 3 winners.

Music Therapy – Group activities using music or instruments to engage the youth, followed by group discussion.

Recreation: Gym activities



Questions!!!!!!!!!!!!