

Department of Public Health and Wellness

FY17 Budget Presentation



June 7, 2016

Joann Schulte, DO, MPH
Director

What is Public Health?

“Public health is the science and art of preventing disease, prolonging life and promoting health through the organized efforts and informed choices of society, organizations, public and private, communities and individuals”

World Health Organization

What is Population Health?

“Population health is the health outcomes of a group of individuals, including the distribution of such outcomes within the group”

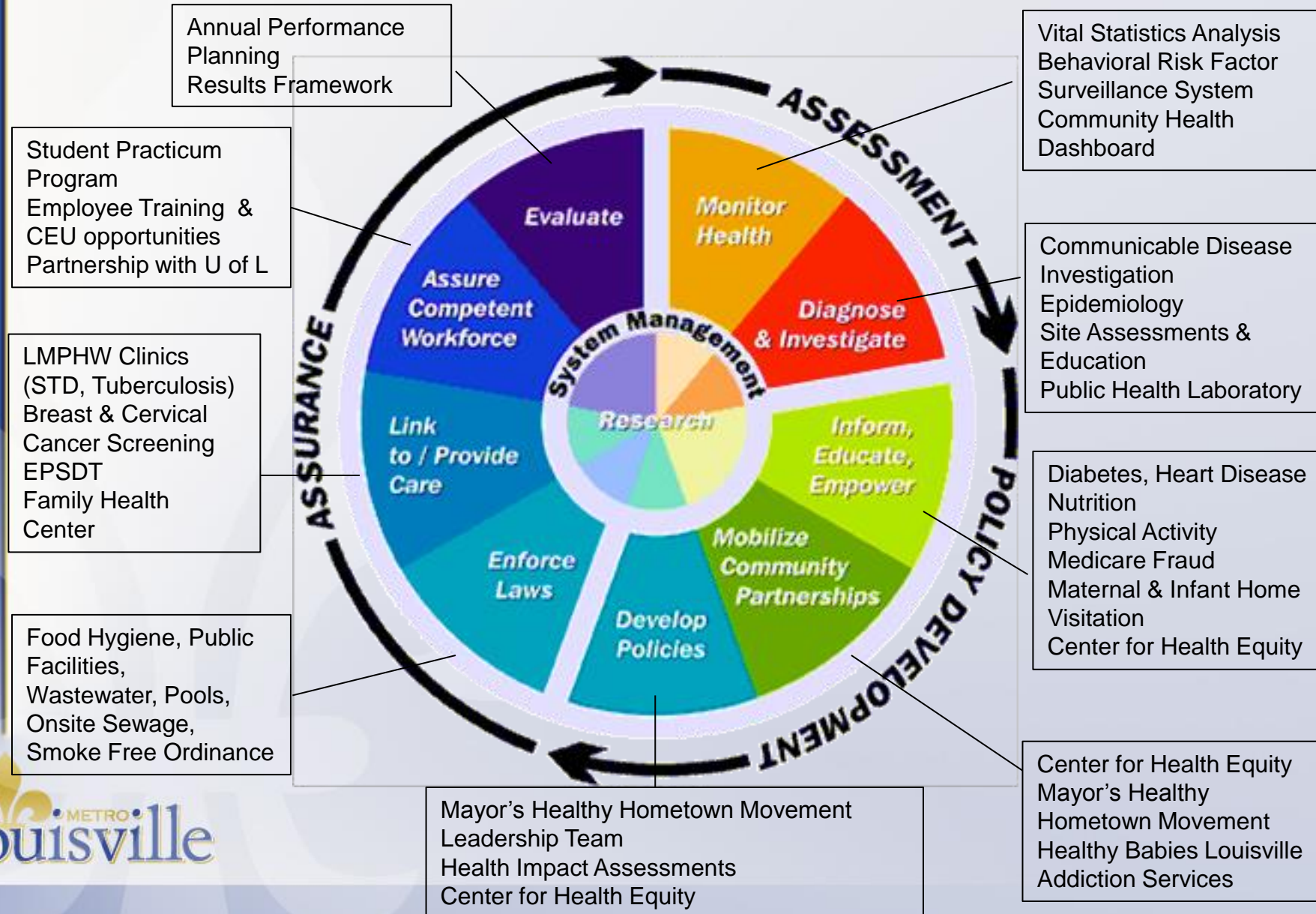
LMPHW Mission

The mission of LMPHW is to promote health and wellness; prevent disease, illness, and injury; and protect the health and safety of Louisville Metro residents and visitors.

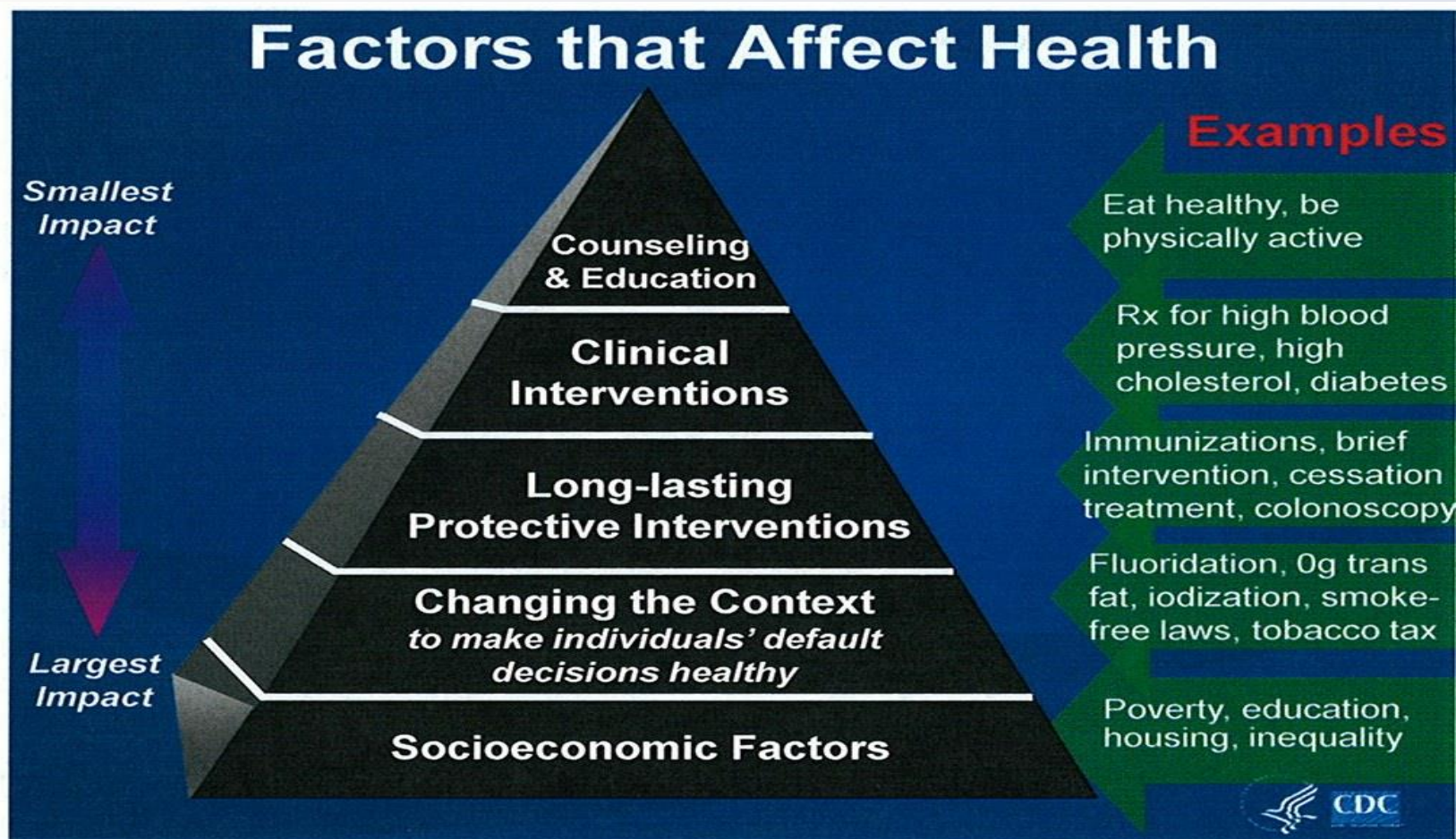
Our Priorities

- Creating a Culture of Health and Wellness in Louisville Metro
- Continued Focus on Social Determinants of Health and Health Equity
- Strengthening Public-Private Partnerships
- Increased Connection between Public Health and Clinical Medicine
- Outcomes Driven Approach to Program and Policy Development

Core Functions of Public Health

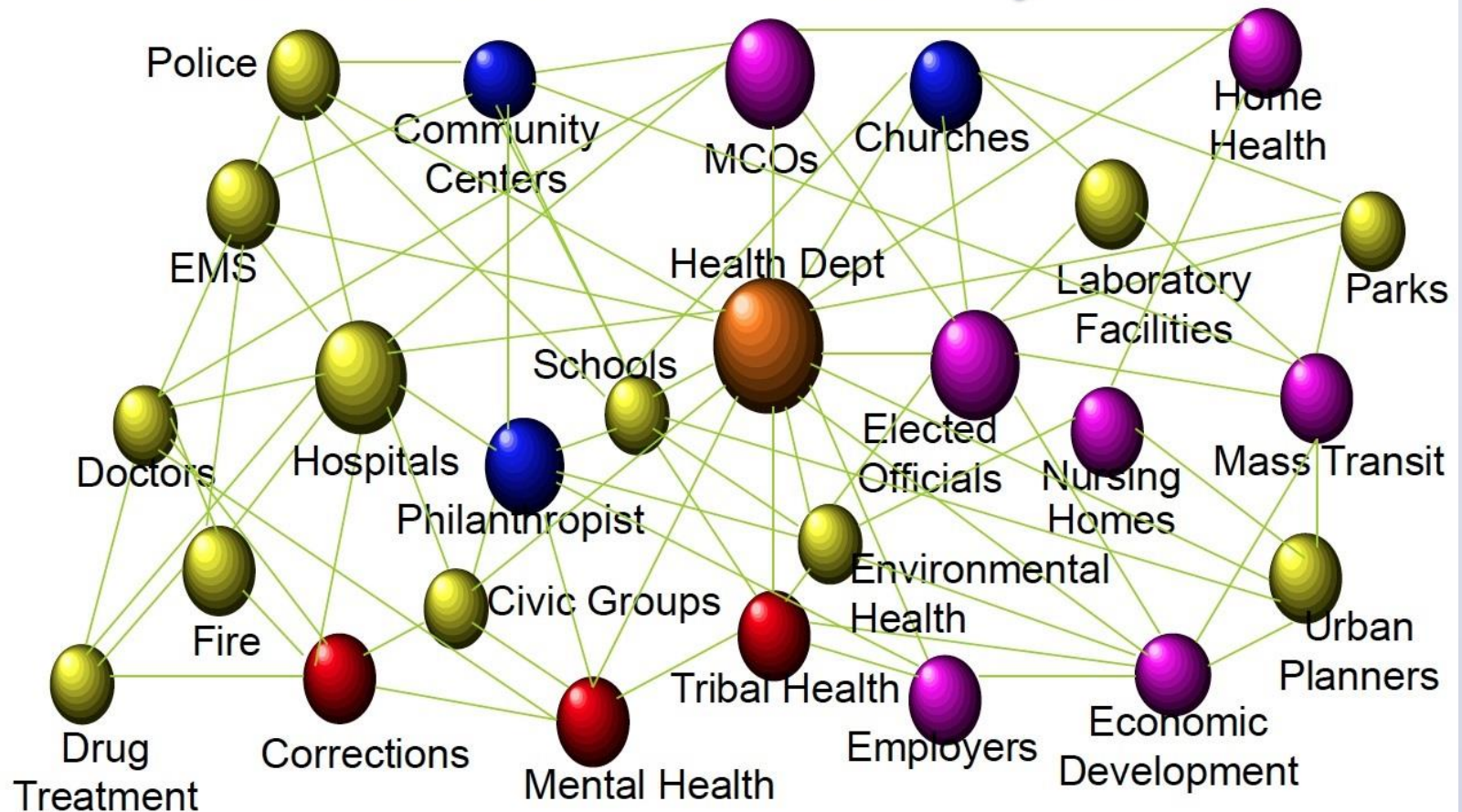


How Do We Improve Health?



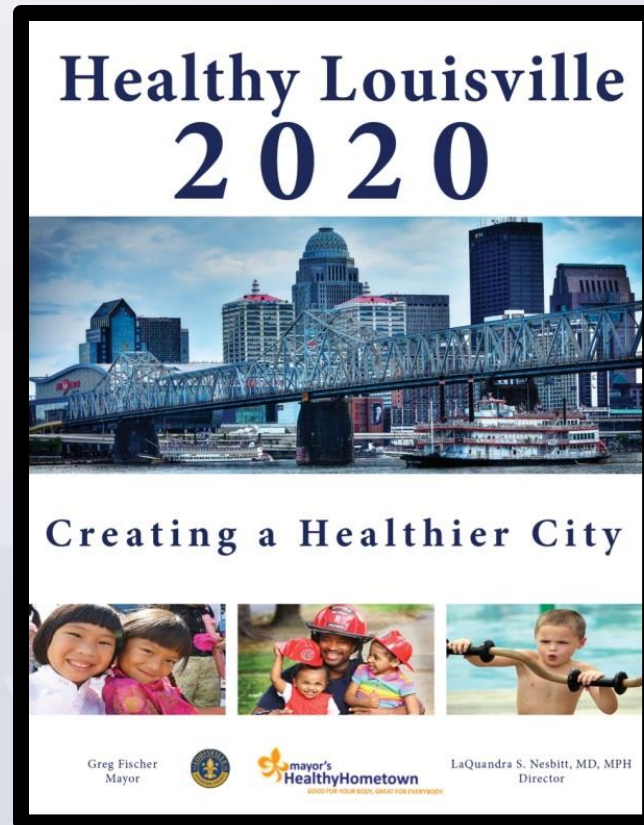
Frieden TR. Am J Public Health 2010;100(4):590-5

Local Public Health System



Connecting the Dots

The Community Health Plan



Connecting the Dots

Mayor's Goal #13

Help our Citizens Get Healthy



Connecting the Dots



Building Resilient Children and Families



Center for Women and Families
Louisville Metro Council
Community Foundation of Louisville
Metro United Way
Family & Children's Place
Norton Healthcare, Inc.
Jefferson County Public Schools
Louisville Metro Community Services & Revitalization
KentuckyOne Health
Office of Youth Development
Office of Safe and Healthy Neighborhoods
Louisville Metro Public Health & Wellness
Seven Counties Services
Louisville Metro Youth Advocates
YMCA of Greater Louisville
University of Louisville School of Public Health

Connecting the Dots



Aetna Better Health of Kentucky
Baptist Health Louisville
Center for Women and Families
Center for Women and Infants University of Louisville
Family & Children's Place HANDS program
Family Health Centers
Family Scholar House
Humana Caresource
Lifeshouse Maternity Home
Louisville Metro Community Services
Louisville Metro Public Health and Wellness
March of Dimes Kentuckiana

Metro United Way
Norton Healthcare
Our Lady of Peace
Passport Health Plan
Seven Counties Services
Teenage Parent Program, Jefferson County
Public Schools
University of Louisville General Pediatrics
University of Louisville Raymond A. Kent School of Social Work
University of Louisville School of Public Health and Information Sciences
Volunteers of America, Mid-States
Wellcare Health Plans

Connecting the Dots

LOUISVILLE HEALTH ADVISORY BOARD

Bellarmino University

FORD

Greater Louisville, Inc.

Humana

Jefferson County Public Schools

KentuckyOne Health

Leadership Louisville Center

Louisville Habitat for Humanity

Louisville Metro Government

Passport Health Plan

Sanofi Pharmaceuticals

Seven Counties Services

UAW-FORD/Kentuckiana
Healthcare Collaborative

University of Louisville
Department of Psychiatry

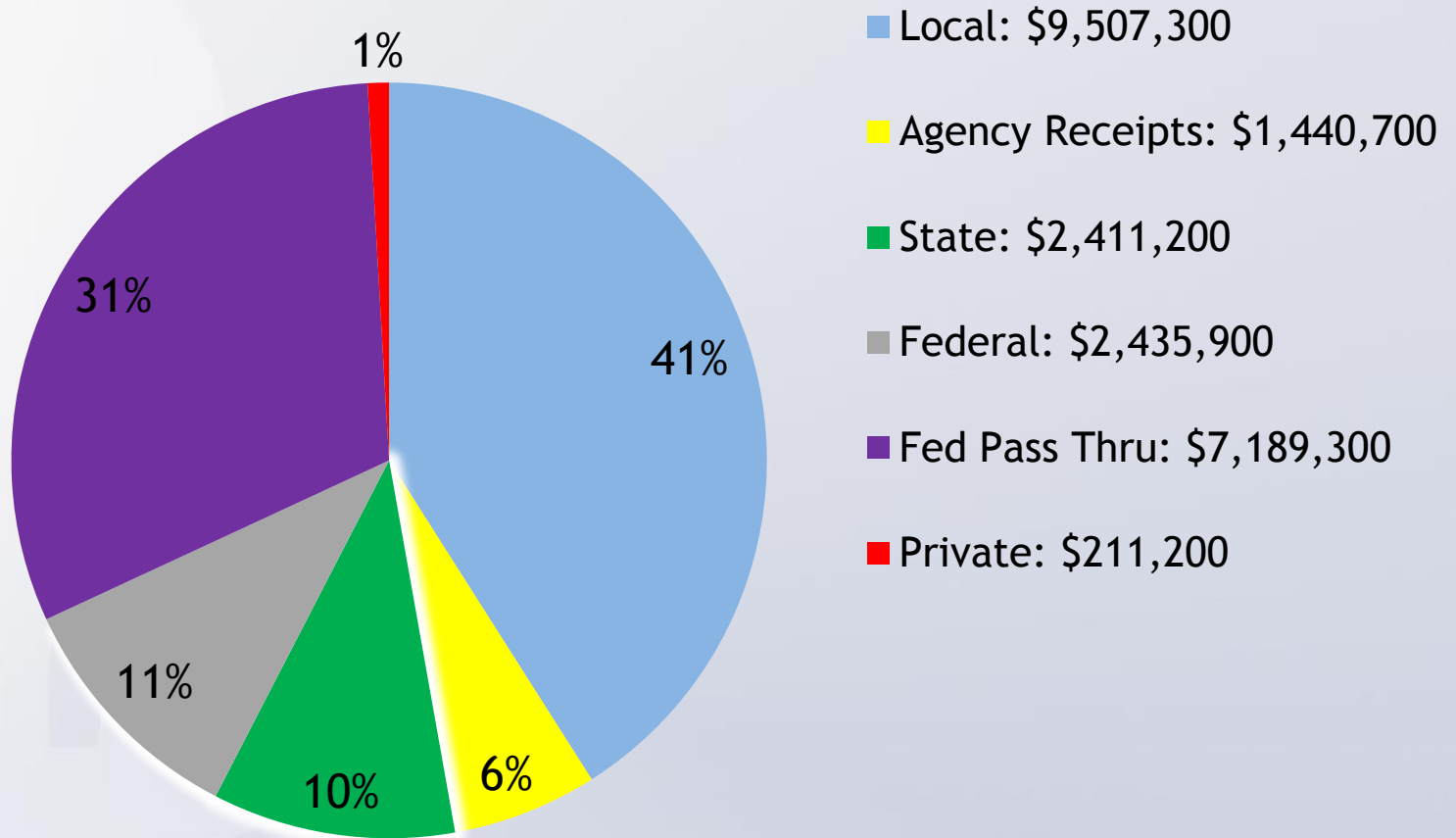
University of Louisville School of
Medicine

University of Louisville School of
Public Health and Information
Sciences

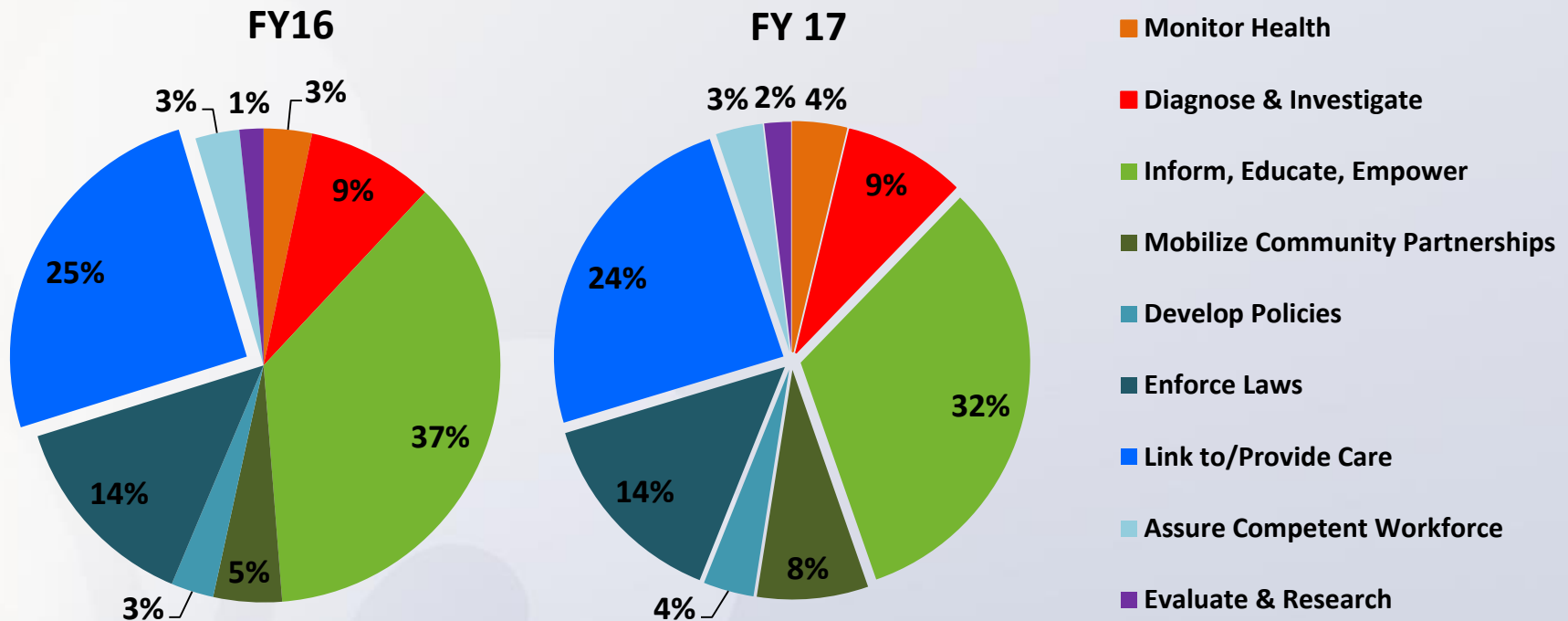
YMCA of Greater Louisville

BUDGET HIGHLIGHTS

LMPHW Sources of Funding



Funding Sources by Essential Services



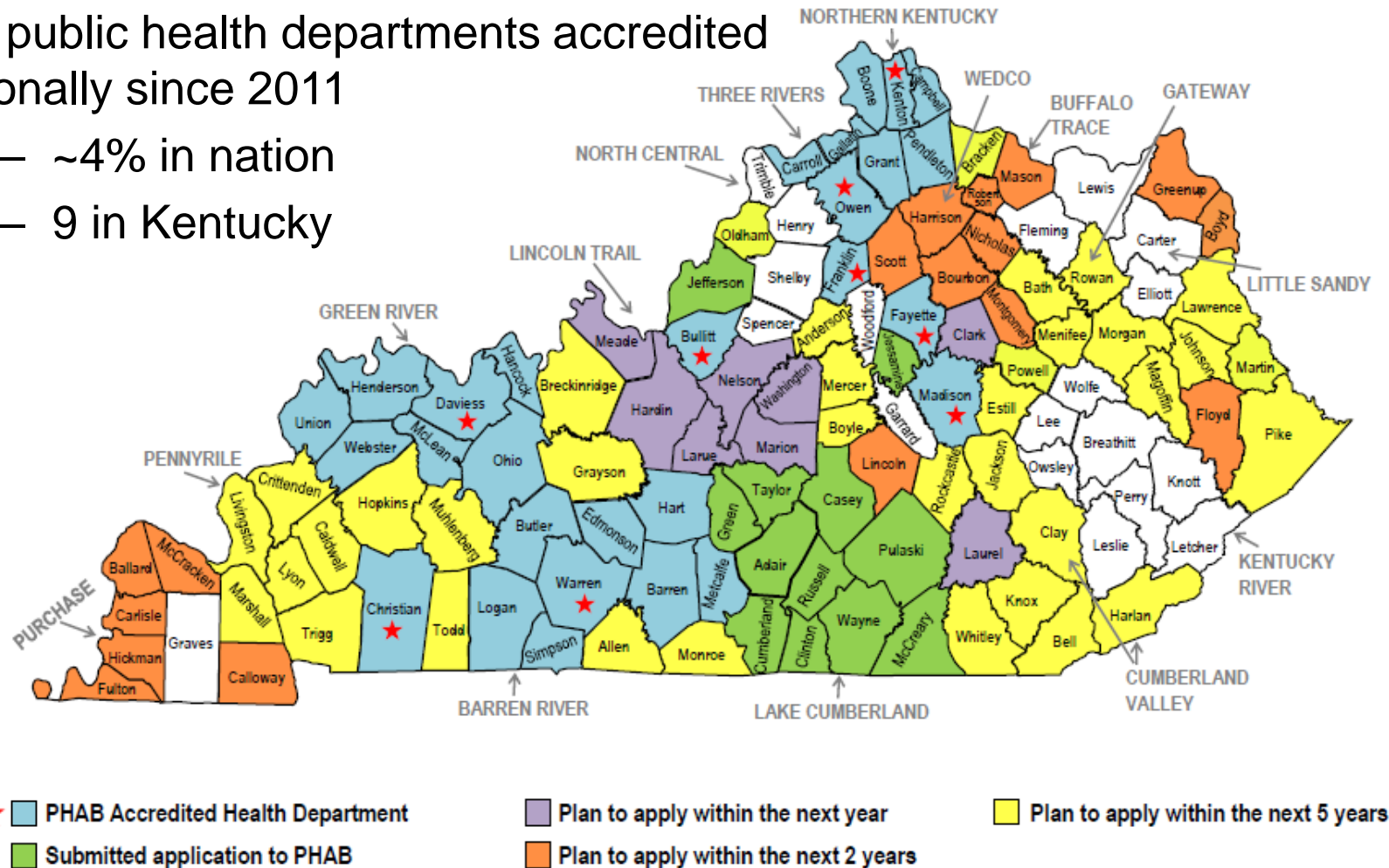
OPERATIONAL CHANGES HIGHLIGHTS

Public Health Accreditation

We're Ahead of the Curve

135 public health departments accredited nationally since 2011

- ~4% in nation
- 9 in Kentucky



Self-reported data. Updated 5/21/2015

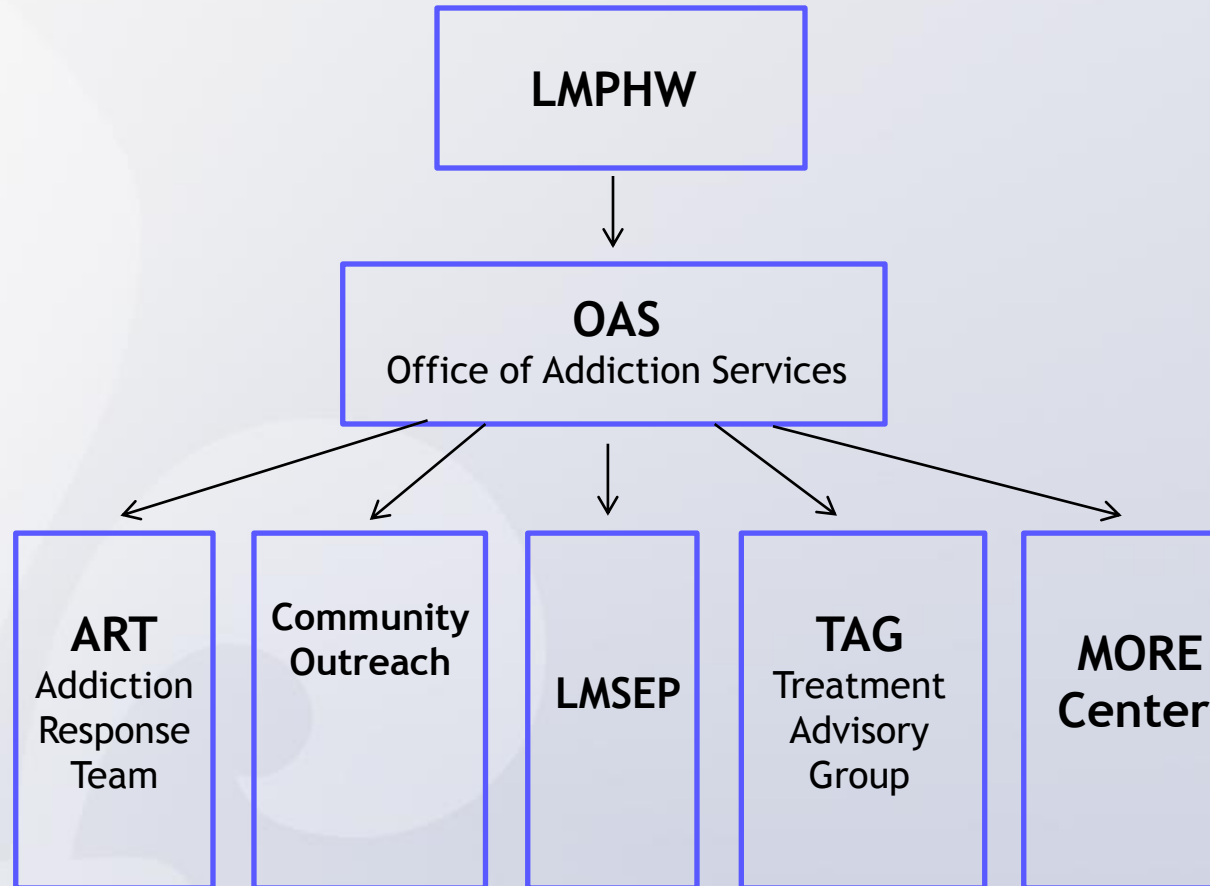
LMPHW Accreditation Activity



Accreditation Site Visitors highlighted LMPHW's strengths as:

- LMPHW uses data to make decisions and solve problems.
- LMPHW is a respected, knowledgeable community partner.
- The LMPHW Laboratory is outstanding.
- The LMPHW HAZMAT program is robust and unique.

Office of Addiction Services



RENEWED FOCUS ON CHILDHOOD LEAD

The good news:
Lead poisoning is **100% preventable.**

Take these steps to make your home lead-safe.



Talk with your child's doctor about a simple blood lead test. If you are pregnant or nursing, talk with your doctor about exposure to sources of lead.



Talk with your local health department about testing paint and dust in your home for lead if you live in a home built before 1978.



Renovate safely. Common renovation activities (like sanding, cutting, replacing windows, and more) can create hazardous lead dust. If you're planning renovations, use contractors certified by the Environmental Protection Agency (visit www.epa.gov/lead for information).



Remove recalled toys and toy jewelry from children and discard as appropriate. Stay up-to-date on current recalls by visiting the Consumer Product Safety Commission's website: www.cpsc.gov.

ZIKA RESPONSE

ZIKA & PREGNANCY



Help Control Mosquitoes that Spread Dengue, Chikungunya, and Zika Viruses

Bzzzz.

Aside from being itchy and annoying, the bite of an infected female mosquito (*Aedes aegypti* or *Aedes albopictus*) can spread dengue, chikungunya, or Zika viruses. People become infected with dengue, chikungunya, or Zika after being bitten by an infected mosquito.

- Female mosquitoes lay several hundred eggs on the walls of water-filled containers. Eggs stick to containers like glue and remain attached until they are scrubbed off. When water covers the eggs, they hatch and become adults in about a week.
- Adult mosquitoes live inside and outside.
- They prefer to bite during the day.
- A few infected mosquitoes can produce large outbreaks in a community and put your family at risk of becoming sick.

Protect Yourself, Your Family, and Community from Mosquitoes

1.

Eliminate standing water in and around your home:

- Once a week, empty and scrub, turn over, cover, or throw out items that hold water, such as tires, buckets, planters, toys, pools, birdbaths, flowerpots, or trash containers. Check inside and outside your home.
- Tightly cover water storage containers (buckets, cisterns, rain barrels) so that mosquitoes cannot get inside to lay eggs.
- For containers without lids, use wire mesh with holes smaller than an adult mosquito.

2.

If you have a septic tank, follow these steps:

- Repair cracks or gaps.
- Cover open vent or plumbing pipes. Use wire mesh with holes smaller than an adult mosquito.

3.

Keep mosquitoes out of your home:

- Use screens on windows and doors.
- Repair holes in screens.
- Use air conditioning when available.



National Centre for Emerging and Zoonotic Infectious Diseases
Division of Vector-Borne Diseases



CS-000000

CDC website <http://www.cdc.gov/zika/index.html>

LMPHW Zika Objectives

1. Reduce/eliminate the spread of the Zika virus through community involvement in enhanced mosquito abatement activities
2. Improve and adapt the local surveillance capacity
3. Develop a local laboratory testing capability and enhance the capacity to test for the Zika virus in mosquitoes
4. Conduct vector control activities and reduce the *Aedes aegypti* and *Aedes albopictus* mosquito population in targeted areas
5. Decrease risk of the Zika virus to pregnant women and women of reproductive age
6. Safeguard the local blood supply

Mosquitoes that Carry Zika

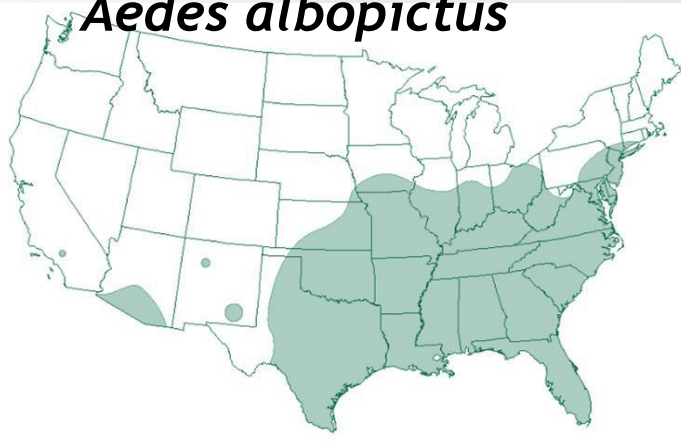
Aedes aegypti



Aedes aegypti mosquito

- Known competent vector
- Is common in warm climates including Africa, Asia, South America, Central America, the Caribbean, and the Southeast U.S. and we do have *some* in Kentucky

Aedes albopictus



Aedes albopictus

- Probable competent vector
- Known to be infected with Zika
- Currently, no documentation of transmission
- Found throughout Kentucky and most southeastern states



Community Involvement



Aedes Albopictus

- ☐ Found in KY
- ☐ Probable vector
- ☐ Breeds in containers
- ☐ Aggressive
- ☐ Day time biter
- ☐ Urban living



- ☐ Tires
- ☐ Gutters
- ☐ Plastic trash
- ☐ Bottles
- ☐ Cans
- ☐ Bird baths



Effective mosquito abatement begins with community involvement ... deny the breeding ground

Questions?

Joann Schulte, DO, MPH

Director

Joann.Schulte@louisvilleky.gov



DEPARTMENT OF
**PUBLIC HEALTH
AND WELLNESS**