



# EMERGENCY SERVICES BUDGET HEARING

JUNE 7, 2016



DEPARTMENT OF  
**EMERGENCY  
SERVICES**

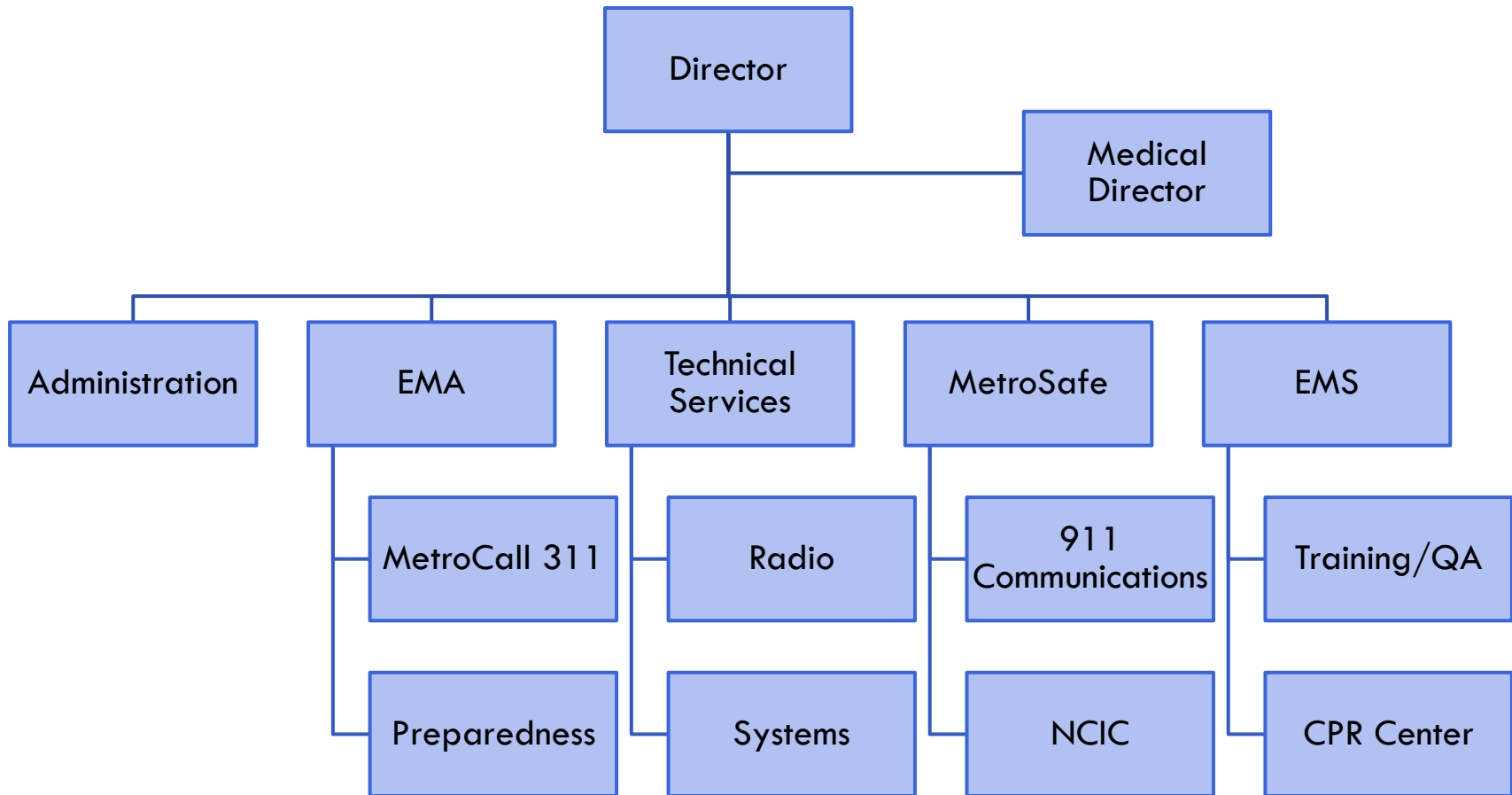


# Emergency Services Mission Statement

- The mission of Louisville Emergency Services is to provide high quality and compassionate emergency and non-emergency response to the citizens and visitors of Louisville Metro and its local, state and regional partners in order to achieve the most favorable outcomes for people, property and the environment.



# Emergency Services Organization



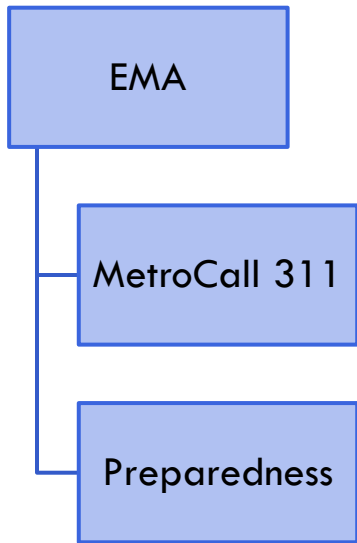
# Administration

- Administration:
  - ▣ Provides administrative services that support the operations of Emergency Services such as:
    - Purchasing
    - Payroll
    - Human Resources
    - Fleet and Supply

Administration



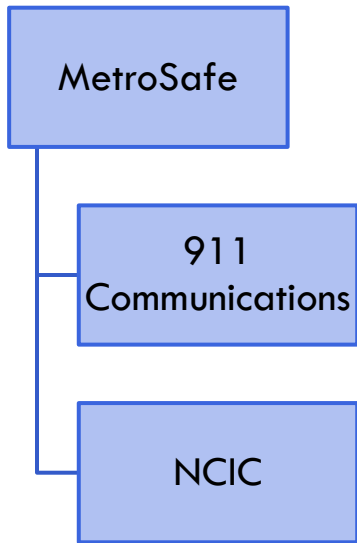
# Emergency Management



- MetroCall 311:
  - ▣ Provides public service to citizens to register concerns, request services and ask questions of Louisville Metro Government.
- Preparedness:
  - ▣ Provides emergency preparedness planning, mitigation and recovery for the community.



# MetroSafe



- 911 Communications:

- MetroSafe is the primary Public Safety Answering Point for 911 services in Jefferson County and dispatches 911 calls for Louisville Metro public safety agencies.

- NCIC:

- The National Crime Information Center unit helps law enforcement locate missing persons, recover stolen property and apprehend criminals by entering and maintaining records into NCIC.



**Red E. Fox says-**  
**Know**

**When** to Call,  
**How** to Call and  
**What** to Say!



# Technical Services

## Technical Services

## Radio

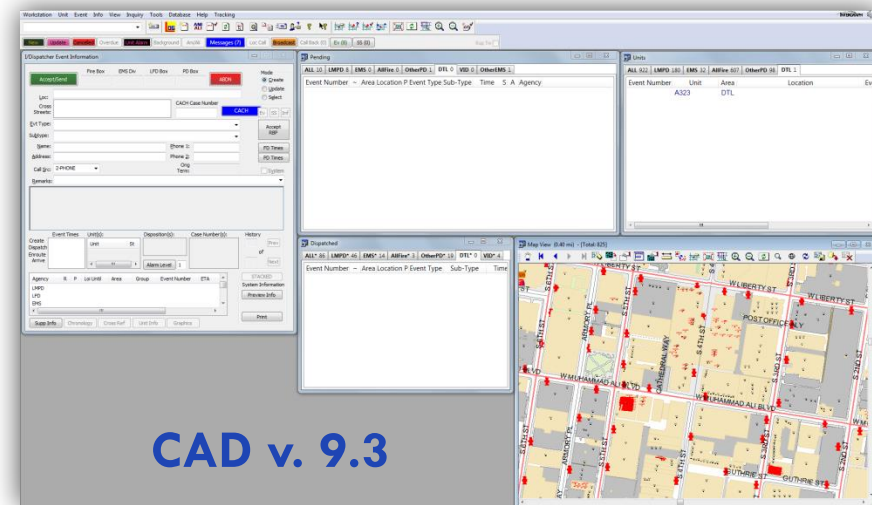
## Systems

### Radio:

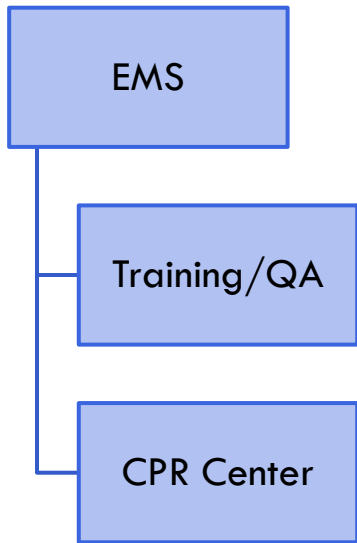
- Manages the public safety emergency radio system. The radio system supports over 6,800 users and over 100 public safety and public service agencies in and around Louisville.

### Systems:

- Manages all the technical systems used on a daily basis by Emergency Services.



# Emergency Medical Services



- Emergency Medical Services:
  - ▣ Provides emergency medical treatment and transport for patients throughout our community.
- Training/Quality Assurance:
  - ▣ Provides training to EMS and MetroSafe personnel. Reviews the quality of medical calls for service from the time a call is taken until the patient is transferred to a hospital.
- CPR Center:
  - ▣ Provides life-saving instruction to both medical and non-medical personnel throughout our community.






# Help us keep Louisville prepared!

Encourage members of your district to sign up for Louisville's Emergency Notification System (LENS):


Follow the link here:

<https://public.coderedweb.com/CNE/B0E6E0CB6CFF>



Keeping citizens informed.

This site is optimized for Internet Explorer 9 and above, Chrome and Firefox. For the best user experience, please ensure you are using these browsers.



COMMUNITY NOTIFICATION ENROLLMENT

Louisville/Jefferson County Metro Government, KY

