



SCRAM[®]
CONTINUOUS ALCOHOL
MONITORING

The world's most widely used and trusted
24/7 transdermal alcohol testing system



99.3% of clients are completely sober
and compliant every day.

SCRAM Continuous Alcohol Monitoring[®] (SCRAM CAM[®]) provides 24/7 monitoring for your higher-risk/higher-need alcohol clients. With the flip of a switch, add optional RF curfew monitoring to your alcohol testing protocol.

Features

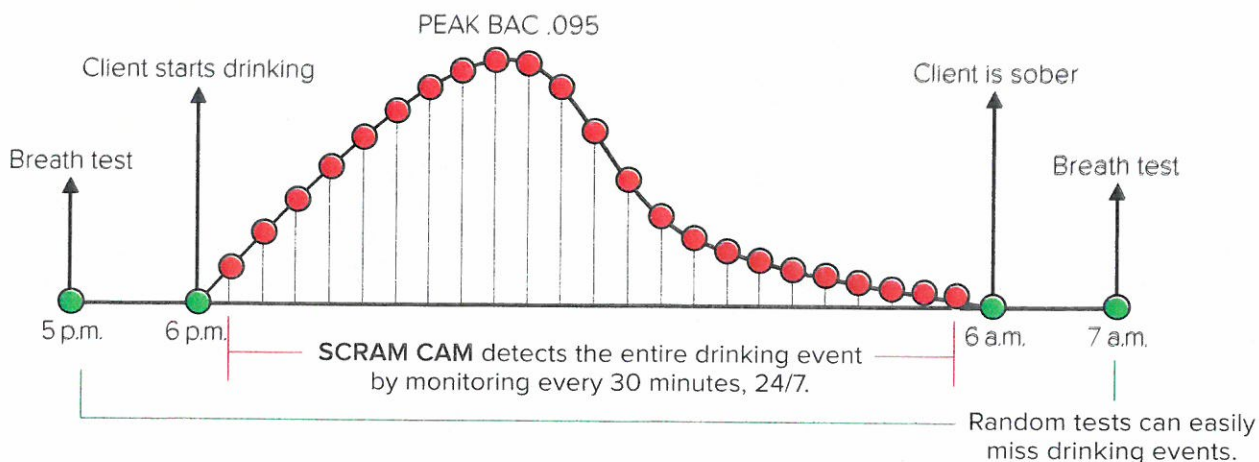
- Automated, non-invasive monitoring
- Samples perspiration every 30 minutes
- Industry-leading anti-tamper technology
- Data analysis of every alert
- Independently tested, court validated

Benefits

- Continuous, automated testing means no drinking around test schedules
- Single-source admissibility—no back-up tests required
- Confidence in test results—conclusively distinguishes alcohol consumption vs. environmental alcohol sources
- National network of SCRAM Authorized Service Partners
- 24/7 customer support

Random vs. Continuous Testing for Higher-Risk Clients

Alcohol metabolizes quickly, which means clients can drink around EtG, random, and scheduled breath tests.



The SCRAM CAM System

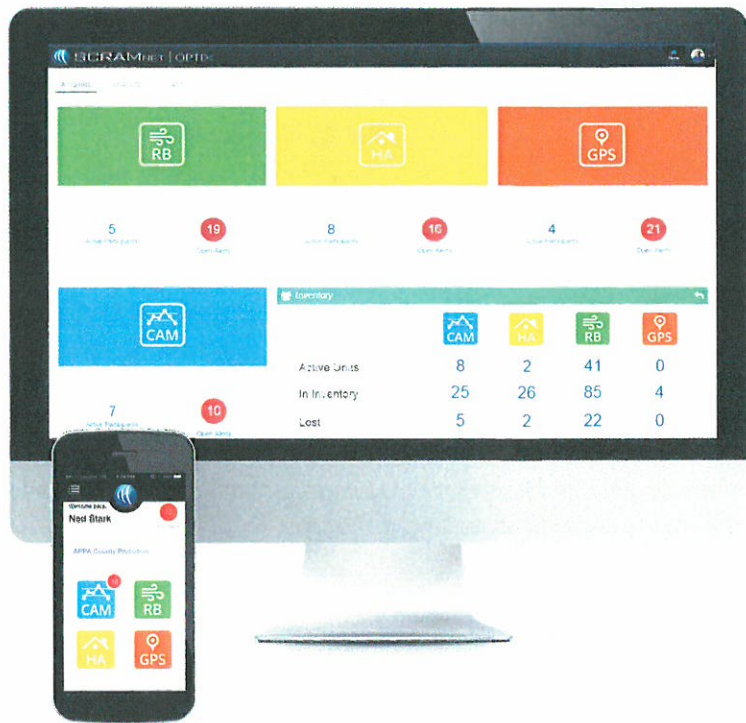


With a single login, SCRAMNET Optix™ provides a unified portal to manage your entire alcohol and location monitoring caseload

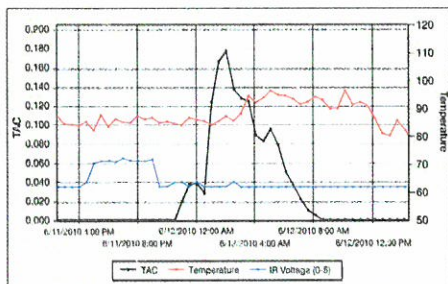
Automatic data uploads to and from the SCRAM CAM Bracelet, with multiple ways for clients to connect

Customized notification and reporting protocols meet your program's needs

Manage client information, alerts, data, and reporting from secure web-based software



User-friendly tool flags alerts and graphically depicts alcohol readings, obstructions, tampers, and equipment noncompliance



Rely on comprehensive program services—from analytics to court documentation to full-service court support



SCRAM Systems®



SCRAM CAM®



SCRAM Remote Breath®



SCRAM GPS®



SCRAM House Arrest®