

# Department of Public Health and Wellness

## **FY19 Budget Presentation**

June 13, 2018

Sarah Moyer, MD, MPH

Director



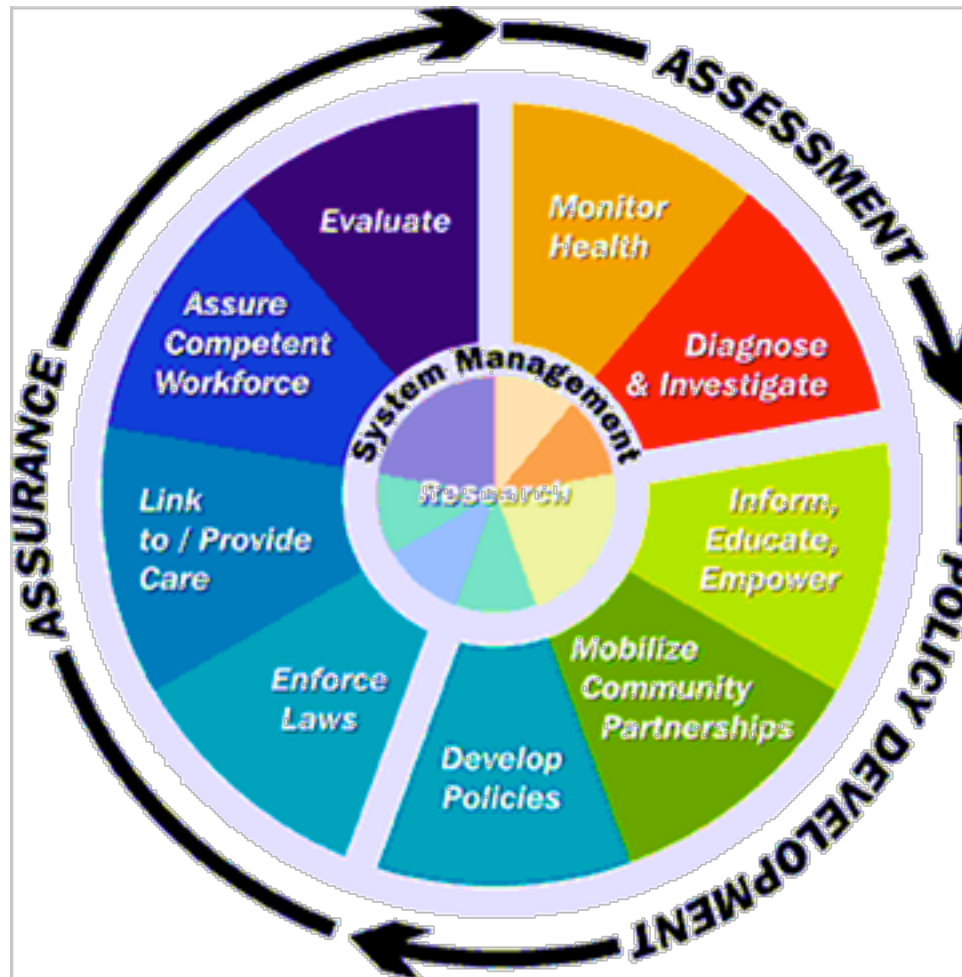
# Our Vision

A healthy Louisville where everyone and every community thrives.

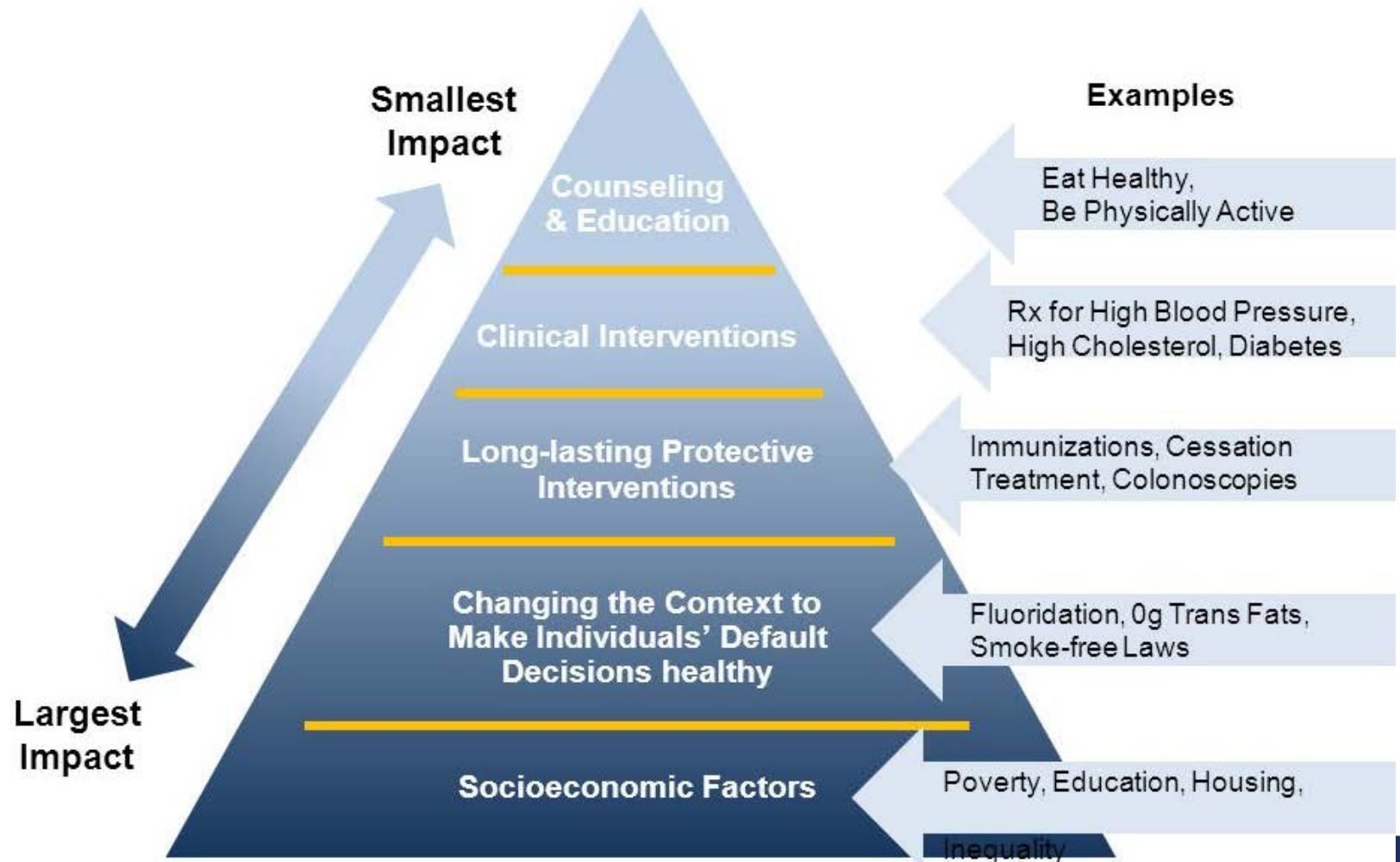
# **Our Mission**

The mission of LMPHW is to achieve health equity and improve the health and well-being of all Louisville residents and visitors.

# Core Functions of Public Health



# Factors that Affect Health



Frieden TR. Am J Public Health 2010;100(4):590-5

# Public Health Modernization

## Public Health 1.0

Tremendous growth of knowledge and tools

Uneven access to care and public health

## Public Health 2.0

Systematic development of public health gov agency capacity across the U.S.

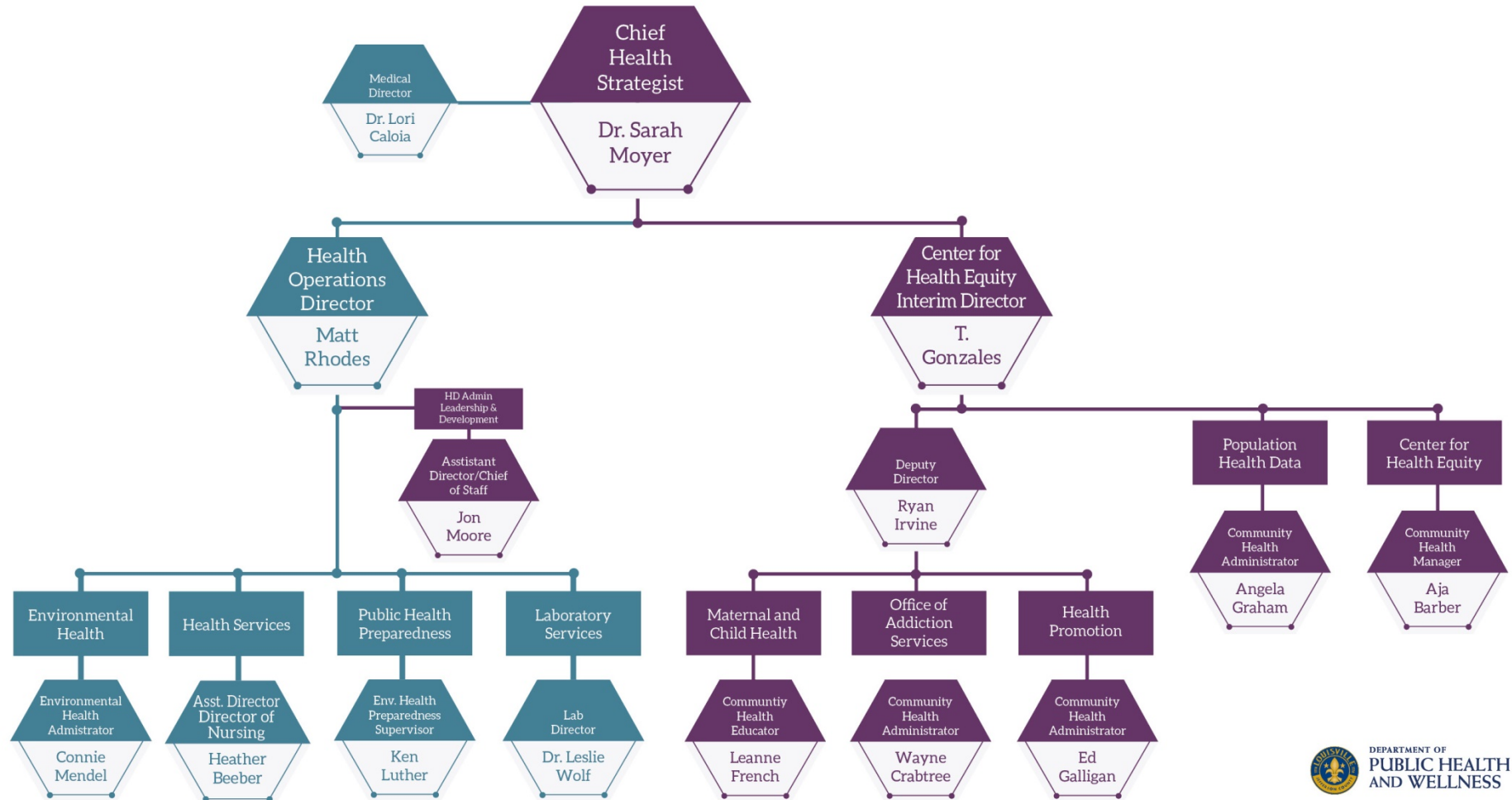
Focus limited to traditional public health agency programs

## Public Health 3.0

Engage multiple sectors and community partners to generate collective impact

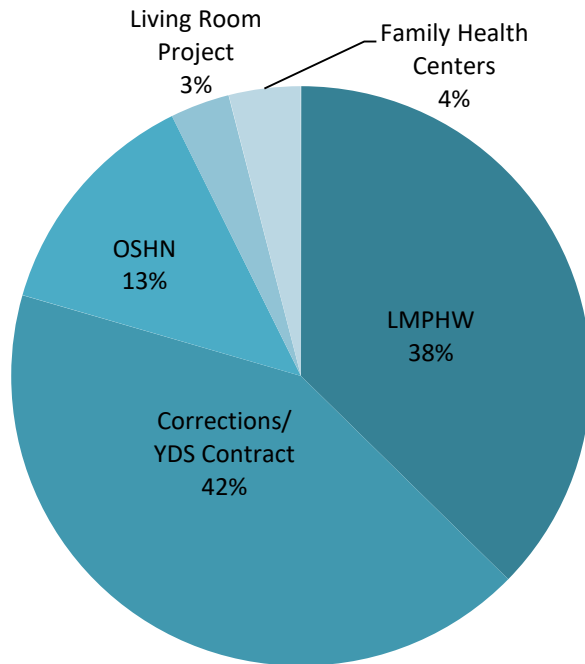
Improve social determinants of health

# Public Health and Wellness Overview



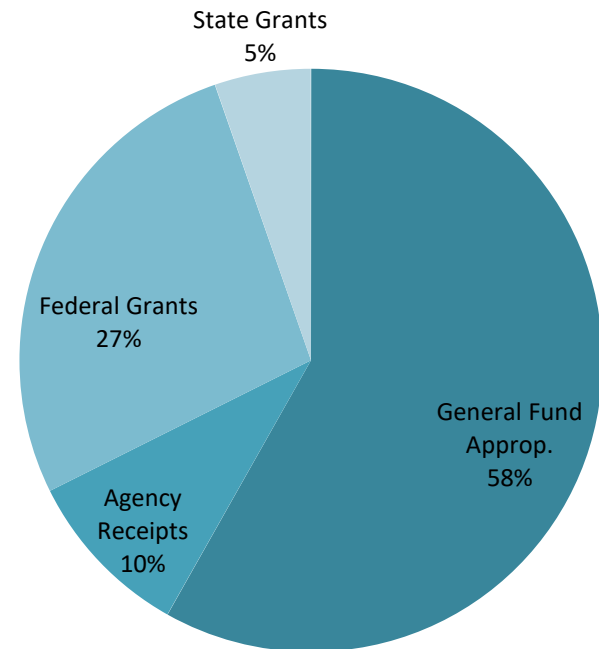
# FY19 Budget Breakdown

## F19 General Funds Breakdown



FY19 Total General Fund Budget: \$19,579,200

## Total LMPHW FY19 Budget



Total FY19 Budget: \$33,651,700



# Health Operations

## FY19 Revenue Highlights

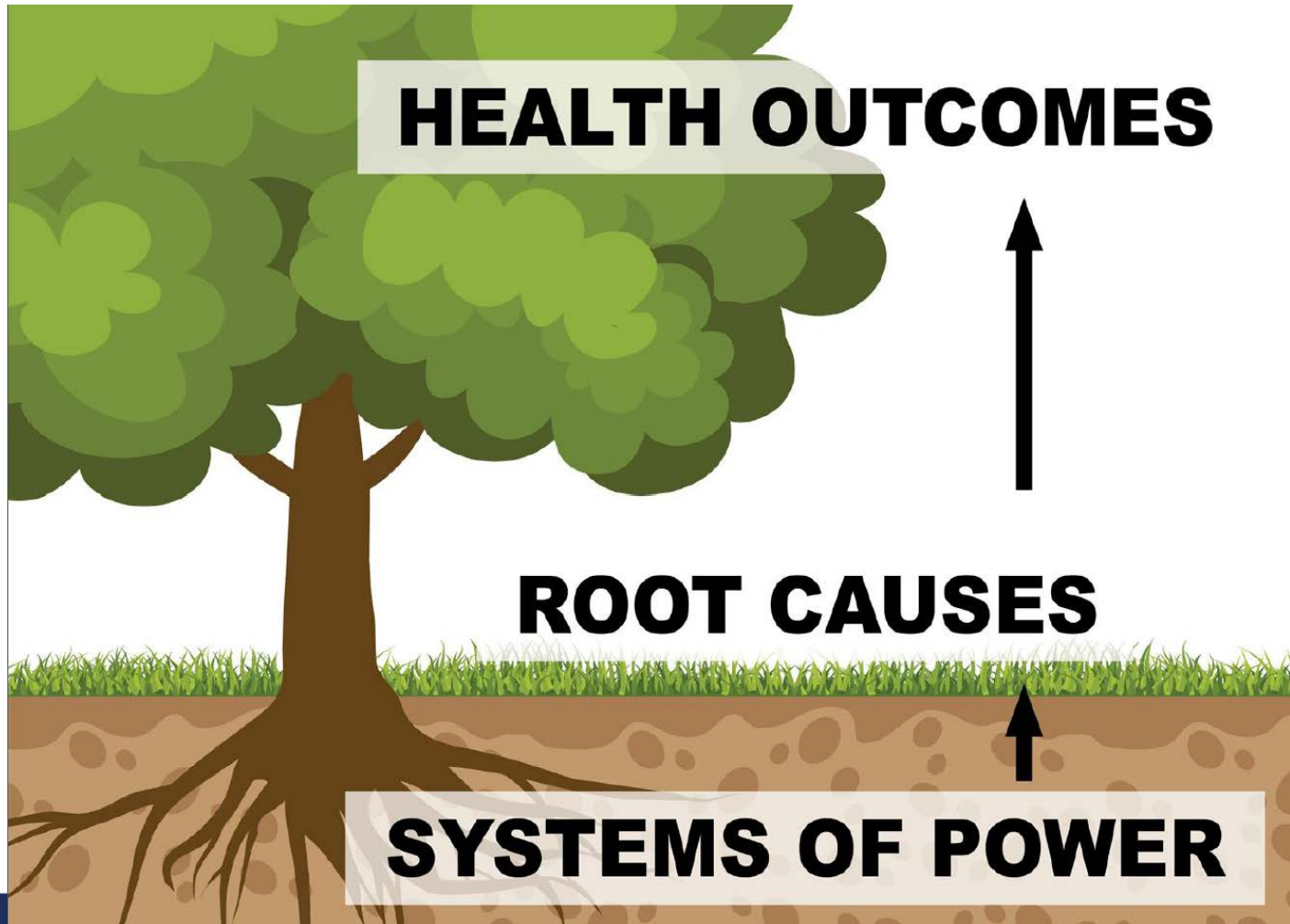
- Environmental Program Revenue
  - Increase in food safety fees
- Clinical Services Revenue
  - Increase in accurate and timely billing

# Health Operations

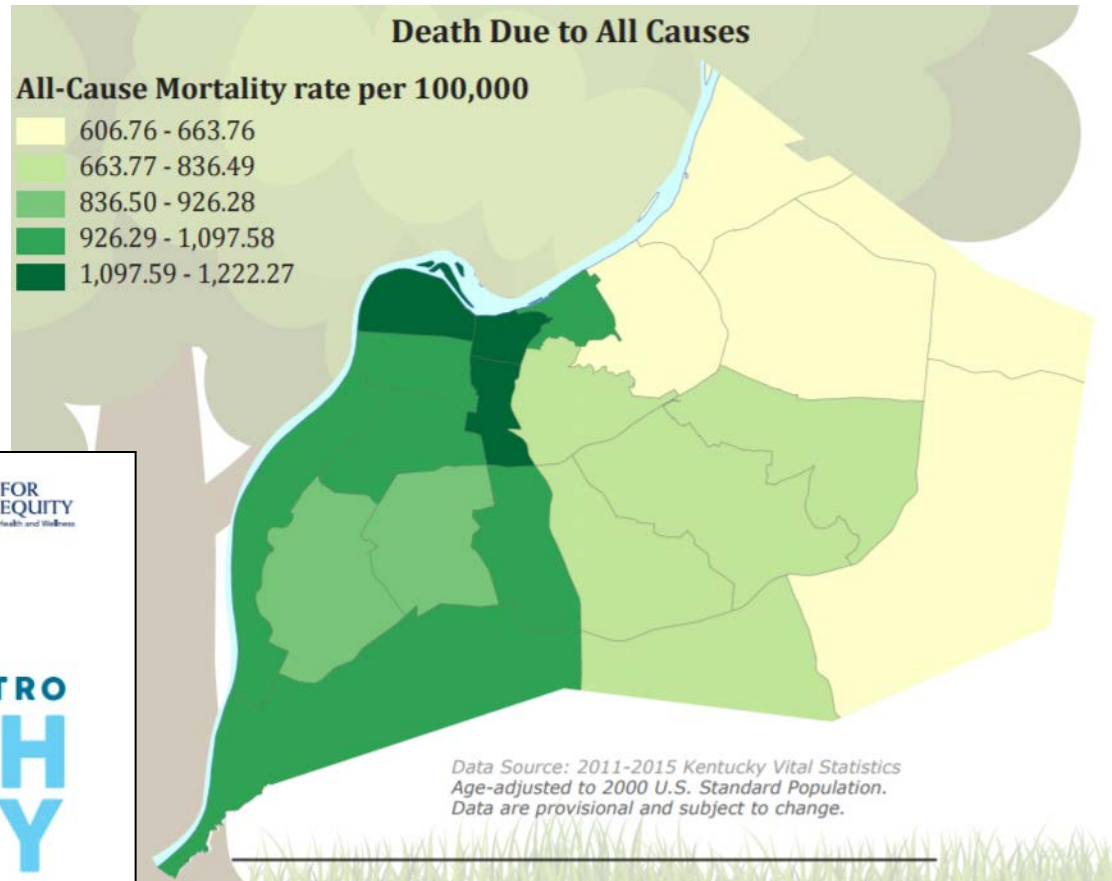
## Hepatitis A Outbreak Response

- 440+ cases of Hepatitis A in Jefferson County
- The target at-risk population remains people who use drugs, the homeless and those associating with the homeless, and men who have sex with men
- LMPHW and partners have vaccinated 73,000 in the community

# Center for Health Equity



# Health Equity Report



# Substance Use Disorder Plan



# Our Vision

A healthy Louisville where everyone and every community thrives.

# Questions?

For information about **substance use disorder** resources, visit [findhelpnowky.org](http://findhelpnowky.org)

To view the 2017 Health Equity Report, visit [HealthEquityReport.com](http://HealthEquityReport.com)

To schedule an appointment for Women, Infants, and Children (**WIC**) services, call 502-574-5978

For information on the **Hepatitis A outbreak**, call Metro United Way at 2-1-1



Department of  
**PUBLIC HEALTH AND WELLNESS**

[www.louisvilleky.gov/health](http://www.louisvilleky.gov/health)