

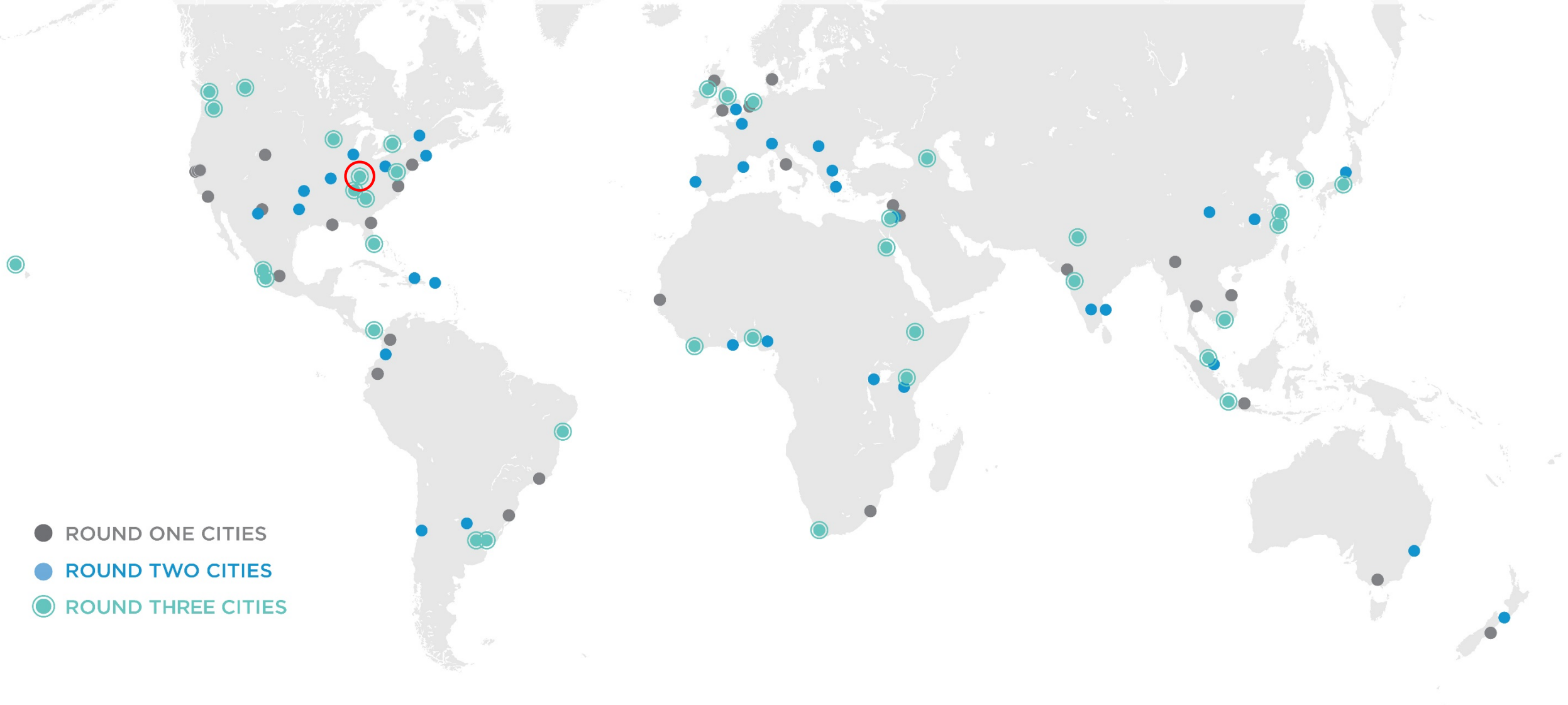


Community Affairs
October 17, 2018

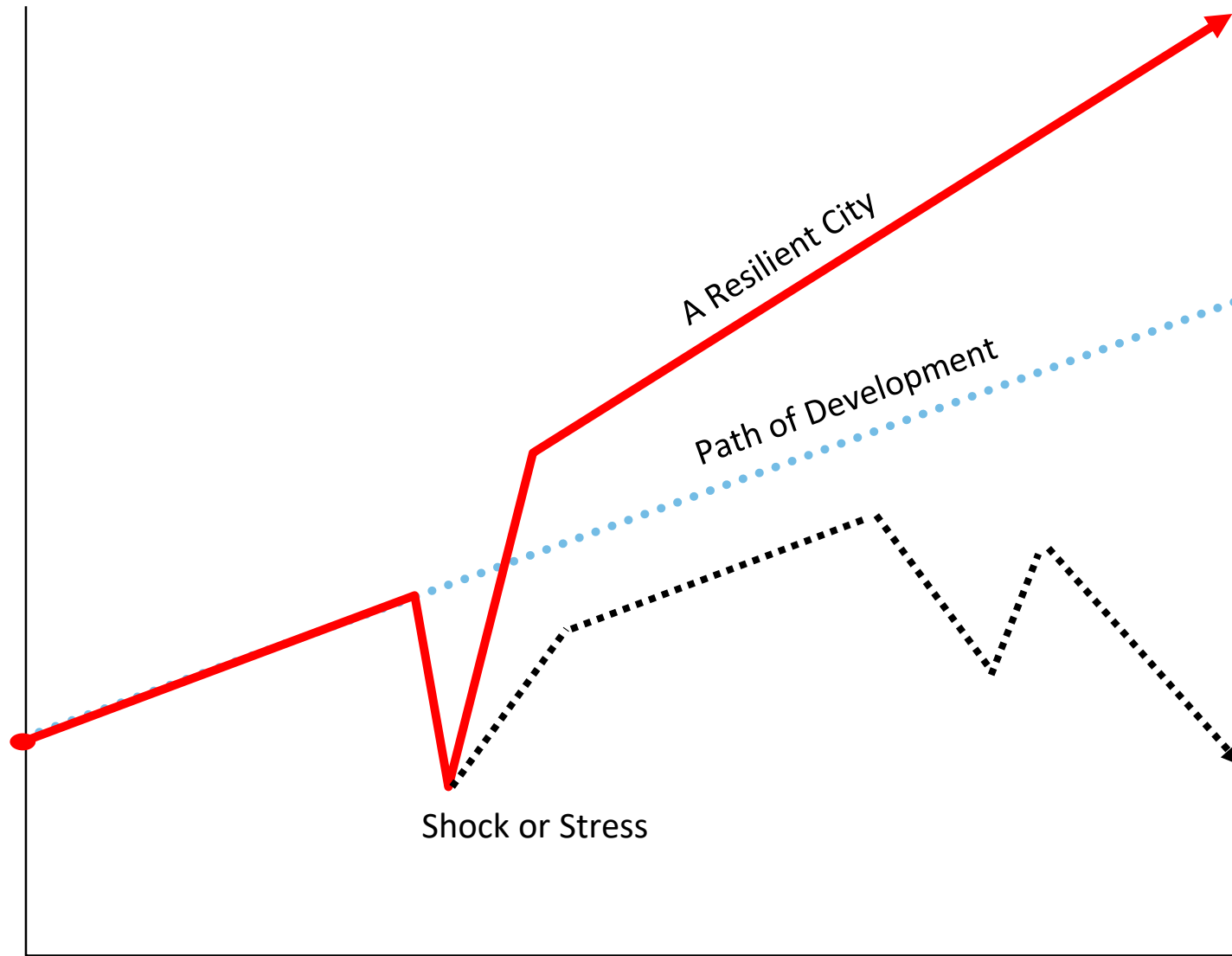
Louisville
RESILIENCE
SURVIVE • ADAPT • GROW • THRIVE

Our Member Cities

Following a highly competitive application process (1,000+ applications), 100RC selected a first group of cities in December 2013, announced the second in December 2014, and the third in May 2016

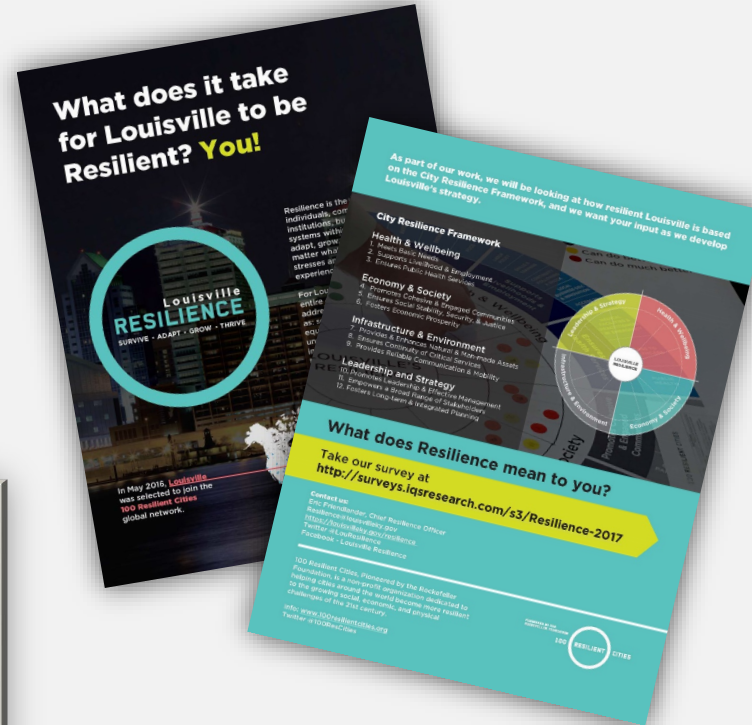


Shocks and stresses can bring opportunities for cities to evolve, and in some circumstances, transform.



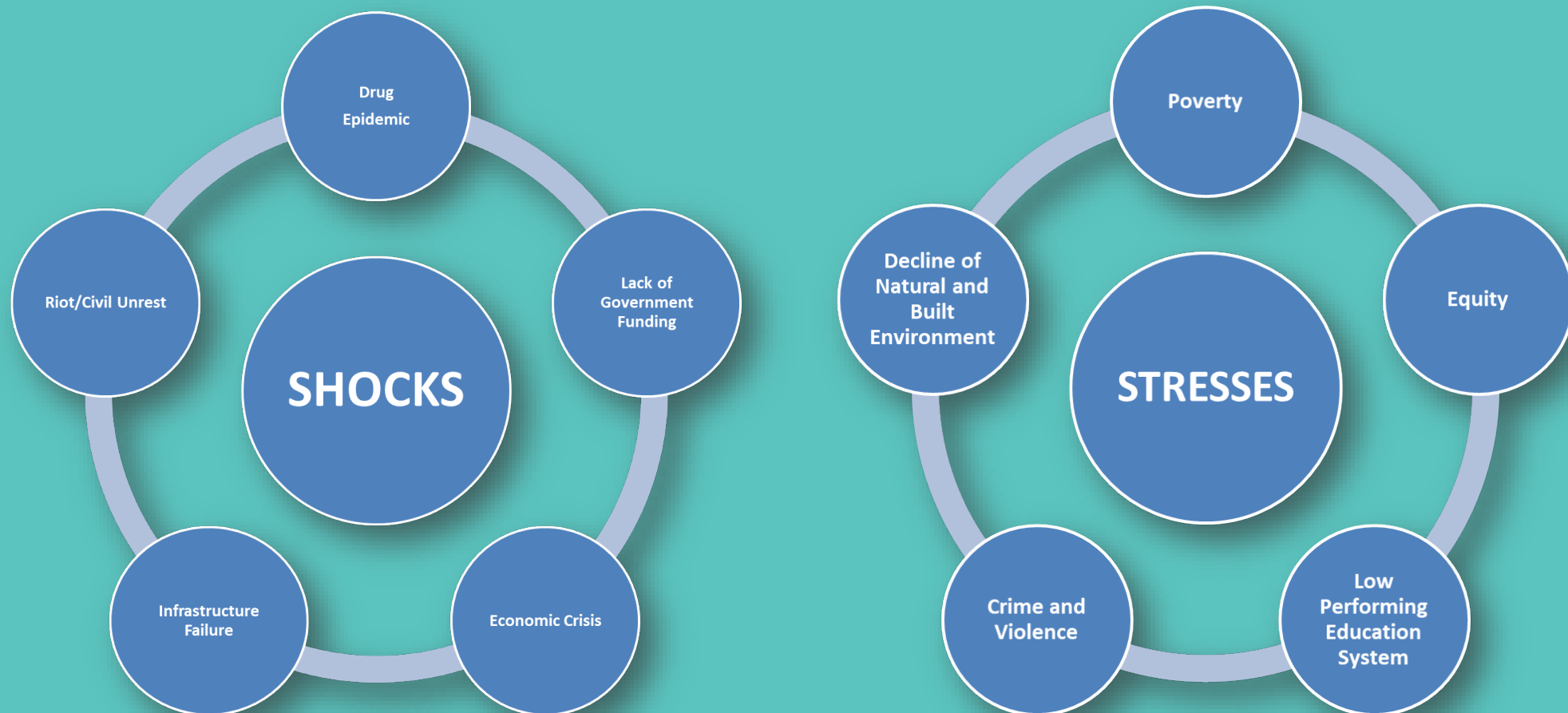
Louisville Resilience

Everyone Has the Opportunity to Survive, Adapt, Grow, and Thrive



LOUISVILLE Shocks + Stresses

The root causes of the shocks and stresses are identified in the discovery areas of the PRA: trauma, trust, economic well-being, and infrastructure as it relates to health with equity as a cross-cutting theme.



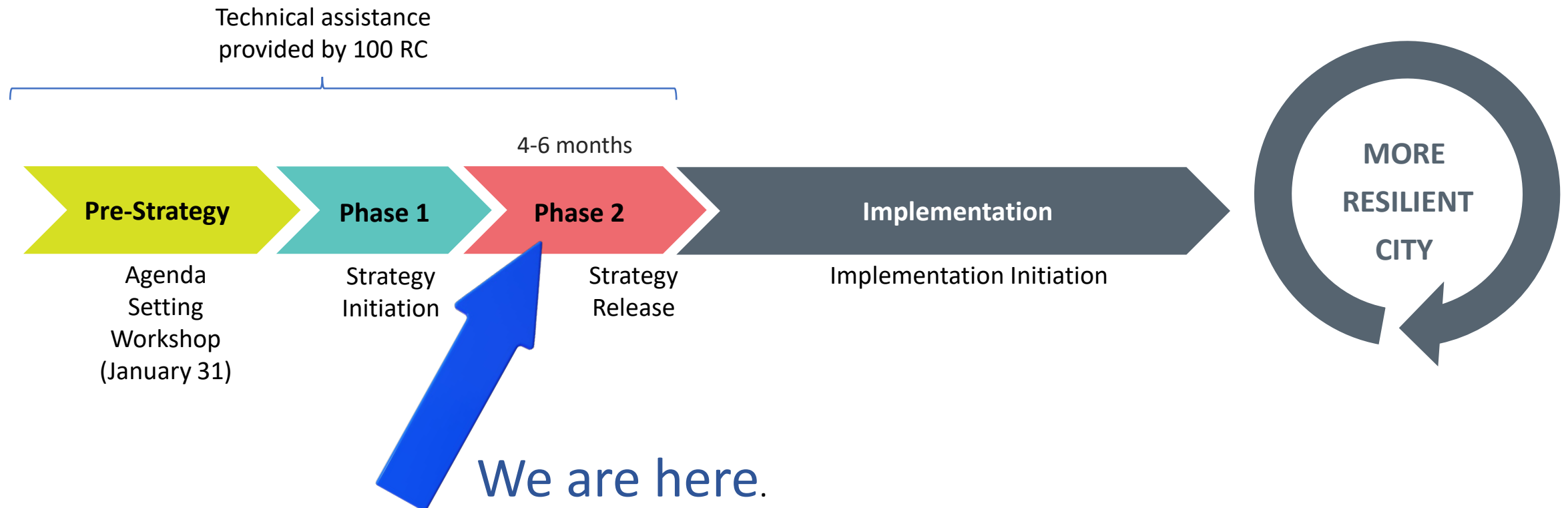
Building Upon Our Strengths



- **Local Culture and the Arts**
- **Aspirational Value of Compassion**
- **Accessible Water Resources and Parks**
- **Strong Business Environment Built on Innovation and Entrepreneurship**

The Process

The Strategy is a tactical roadmap to build resilience that articulates the city's resilience priorities and specific initiatives for short-, medium-, and long-term implementation.



Preliminary Resilience Assessment Framework

Louisville residents appreciate local arts and culture and value a compassionate approach to living in community. Residents recognize our city's strengths of water resources and parks, civic leadership especially in the non-profit realm, a strong business environment built with innovation and entrepreneurship. Residents want to live in a city that addresses the challenges of equity, poverty, safety and educational performance.

Equity Lens

How can Louisville's resilience efforts grow equity at the individual, household, neighborhood, organization, and community levels?

Throughout the engagement process, the Louisville community expressed a concern for equity.

Inequity was identified as an area of concern, an underlying cause of risk from the acute daily experience of stress that impacts lives and weakens resilience to endure shock. In response, Louisville Resilience will apply an equity lens that will be used to address all questions in each Discovery Area.

In Louisville, equity means that everyone has a fair and just opportunity.

Cross Cutting Theme

**How can arts and culture be leveraged to
increase understanding of Louisville's
Discovery Areas?**



LOUISVILLE RESILIENCE

Discovery Areas

Enrich Culture of Compassion & Trust

Enhance Resilience to Trauma

Increase Financial Capacity, Wealth Building & Economic Opportunity

Strengthen Built & Natural Infrastructure that Promotes Health

Enrich Culture of Compassion & Trust

Louisville Metro will build resilience by cultivating compassion and trust. Enriching the culture of compassion and trust will encourage transparency among entities, build open communication and foster social cohesion.

Strengths:

- Louisville's arts and culture
- Culture of compassion
- Mayor's Give a Day
- Multiple social events, festivals and other activities

Concerns:

- Trust among governmental entities
- Trust between citizens and government
- Trust and understanding between affluent and impoverished neighborhoods
- Inequitable power distributions

Objective:

Identify opportunities to build upon Louisville's culture of compassion and trust

Enhance Resilience to Trauma

Trauma adversely impacts lives. Severe events in life cause trauma leading to poor health outcomes and quality of life. By building resilience, individuals develop the skills needed to mitigate traumatic events.

Strengths:

One Love Louisville
Bounce Coalition
Mindfulness Project
Cradle to Career

Concerns:

Lack of systemic trauma informed approaches
Lack of funding for trauma mitigation programs
Increase in addictions to substances
Community violence

Objective:

Identify strategies that can help residents build resilience when facing traumatic life events.

Increase Financial Capacity, Wealth Building & Economic Opportunity

Healthy communities have opportunities to build financial stability. Economic resilience will occur by closing the wealth gap, helping residents build ownership opportunities, and ensuring all can prosper and grow.

Strengths:

Bank On Louisville
Diverse economic drivers
Small business and micro-lending programs

Concerns:

Disparate life outcomes due to poverty
Increasing wealth gap
Lack of access to affordable, community-based capital

Objective:

Identify strategies that support social mobility, wealth building and financial stability



Strengthen Built & Natural Infrastructure that Promotes Health and Wellbeing

Resilient communities are cognizant of the value of all types of infrastructure in promoting health. Increased awareness builds engagement that supports an environment leading to a healthier quality of life.

Strengths:

Parks system
Access to water
Envirom Institute
Conn Center for Renewable Energy Research

Concerns:

Failing infrastructure and lack of community will
Lack of jobs related to renewable resources
Enhansed risk due to increasing heat and rainfall
Public transit and available resources to grow

Objective:

Identify Strategies that use the built and natural environment to promote health and wellbeing

STRATEGY PHASE 2

A Time of investigation, Initiative Design and Vision Setting



Analyze, Innovate, and Partner



Identify and Prioritize Opportunities



Design and Deliver

Member Cities Strategy Documents



Instill sustainable energy and water efficient infrastructure improvements

Develop a resilient local food system by 2025



Expand Distributed Energy to Vulnerable Communities

...Recommendations, Actions and Targets

PIONEERED BY THE
ROCKEFELLER FOUNDATION

100

RESILIENT CITIES

RESILIENT

LOUISVILLE

Questions, Comments, Concerns

Resilience@louisvilleky.gov

Twitter: @LouResilience

<https://louisvilleky.gov/resilience>

100 Resilient Cities Information:

www.100resilientcities.org

Twitter: @100ResCities